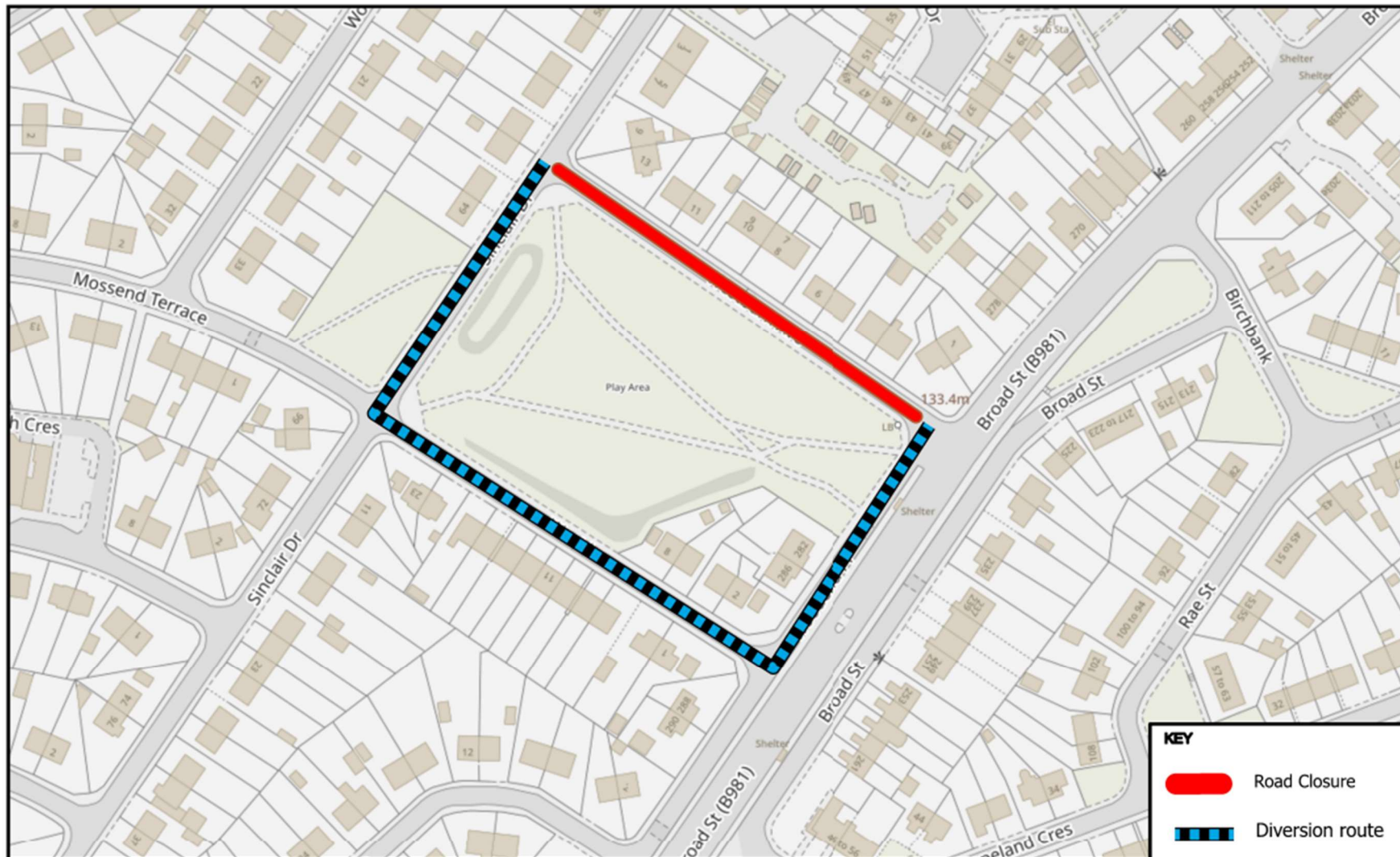


# Temporary Road Closure

- WHERE ?** Westburn Avenue, Cowdenbeath (from Jct. Broad Street to Jct. Sinclair Drive).
- The alternative route for through traffic is via Sinclair Drive, West Lane & Woodend Place.
- Access for emergency service vehicles and residents will be maintained.
- Pedestrian access will be maintained.
- WHEN ?** From 8am Monday 30<sup>th</sup> June 2025 to 23.59pm Wednesday 9<sup>th</sup> July 2025.
- WHY ?** To allow Scottish Water works to be carried out in safety.
- WHO ?** Clancy Group are responsible for these works and can be contacted as follows:

Emergency/Out of Hours: 08000778778





© Crown copyright and database rights 2025.  
Ordnance Survey 100023385  
Aerial Photography © copyright Getmapping.

N  
Scale: 1:1,488

## Westburn Avenue, Cowdenbeath.

Prepared By: BL  
Service: Roads & Transportation



**The Fife Council (Westburn Avenue, Cowdenbeath) (Temporary Prohibition of Use) Order  
2025**



[www.fife.gov.uk/notices](http://www.fife.gov.uk/notices)

19/06/25