



Roads and Transportation Services
Flooding, Shoreline and Harbour Team
Bankhead Central
Bankhead Park
Glenrothes KY7 6GH



HARBOUR FACT SHEET

Web Site: www.fife.gov.uk

Email: Harbours@Fife.gov.uk

Telephone: 03451 555555 Ext 461541

Out of Hours: 03451 55 00 99

Pettycur Pier

Harbour Office, Shore Street, Anstruther, KY10 3AQ

Lead Harbour Master

Allan Anderson (Ad-hoc)

Harbour Master

| | | | | | |
|---------------------|--|----------------------|-----------|----------------|----------------|
| Description | A single pier running in an east west direction. | | | | |
| Location | Northern shore of the Firth of Forth | | | Imray chart No | C27 |
| Limits | The harbour limits, are outlined in the Schedule to the Fife Council Harbours Byelaws 1996, broadly extend as follows: <ul style="list-style-type: none">• Around the shoreline to the north of the pier• Approximately 200m west of the pier head• And approximately 175m south of the pier head. | | | | |
| Approach | The approach to the pier is open from the south to the west but very shallow. The seabed gradually shoals from the pier head to the end, consisting of sand, except for a rocky patch extending 20-30m from the pier head, which should be avoided. There are no official navigation marks on the pier. 1of30responses | | | | |
| Usage | Fishing vessels. Recreational vessels. | | | | |
| Latitude (Entrance) | 56.062063N | Longitude (Entrance) | 3.181224W | Grid Reference | 326546,686098 |
| Tidal Range | 0.1 to 5.9 m (Chart Datum) | Neap Tide | 2.5 m | Spring Tide | 5.0 m |
| Navigational Access | No | Tide Gauge | No | Berths | 20 Small Craft |
| Tugs | No | Anchorage | No | Pilotage | No |
| Cargo Handling | No | Repair facilities | No | ISPS Compliant | N/A |
| Maximum Draft | N/A | Maximum Length | N/A | Maximum Beam | N/A |

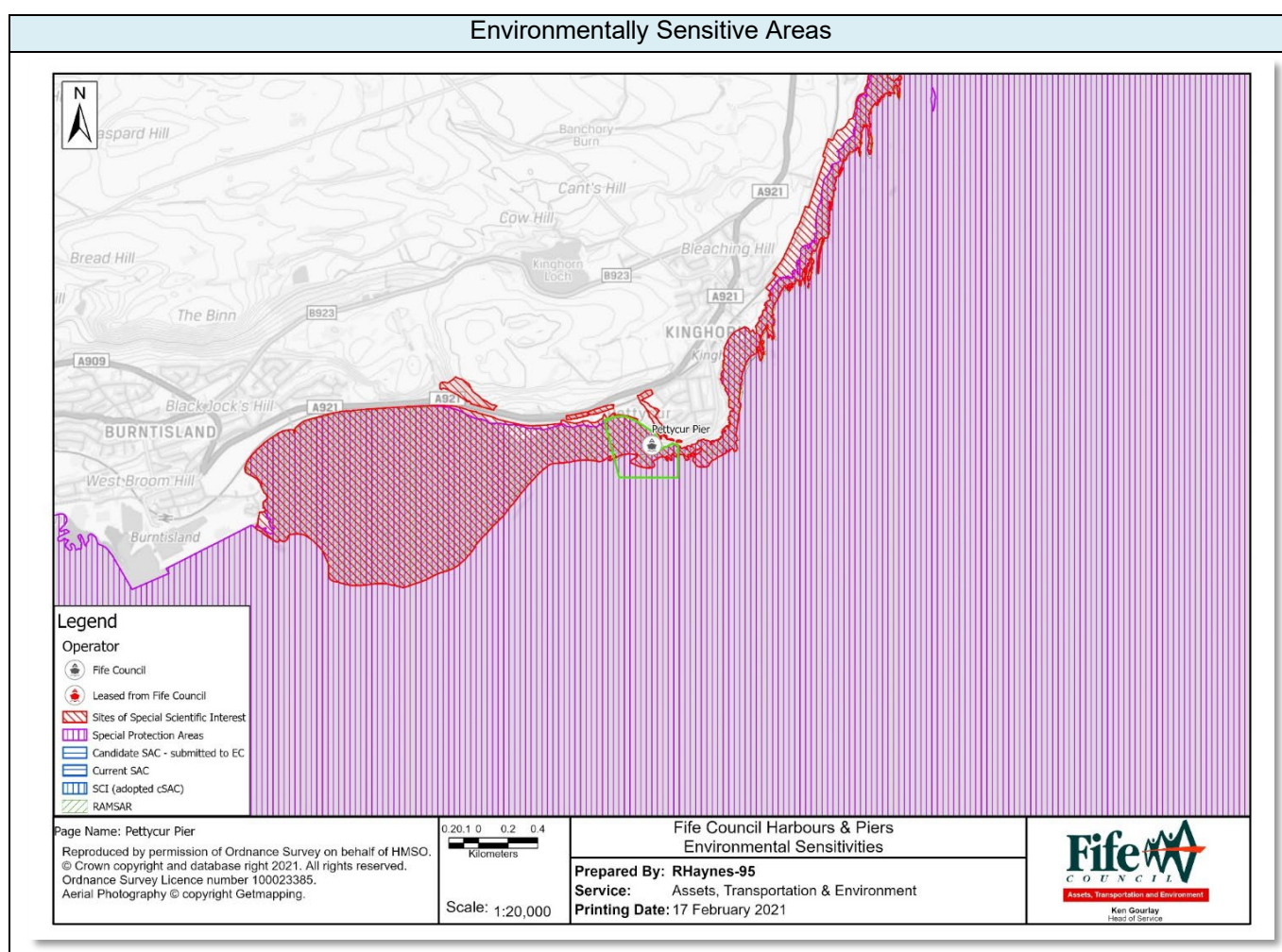
| Control Depths/Drafts | Location | Bed Material | Bed Level | Keel Clearance | Note |
|-----------------------|--|--------------------------------|-----------|----------------|---------|
| | Approach | Sand | N/A | Min 1 m | Shallow |
| | Pier Head | Rocky patch extending 20 – 30m | N/A | N/A | Avoid |
| | The approach to the pier is relatively shallow from all directions, and the whole length of the pier dries out on low tides. Hence access to the pier is controlled by the height of tide plus a minimum keel clearance. | | | | |

| | | | | | |
|---------------|-----|-----------------------------|----|--------------------|----|
| Communication | VHF | Calling and Distress/Safety | 16 | Harbour Operations | 11 |
|---------------|-----|-----------------------------|----|--------------------|----|

| | |
|-----------------------|--|
| Operating Constraints | The main constraint on using the pier is the water depth, which varies with the tide and dries out during low spring tides. The seabed gradually shoals from the pier head to the end and consists of sand |
| | Due to the relatively shallow nature of the approaches to the pier, high winds and large waves can make the area difficult to navigate. |
| | When visibility is restricted vessels should consider whether it's safe to approach / leave the pier based on the equipment they have on their vessel and the local knowledge of the skipper. |
| | The seabed alongside the pier consists of sand, but the seabed immediately off the head of the pier consists of a rocky patch extending 20 – 30m out from the pier head and should be avoided. |
| | There are no formal mooring provisions (e.g. bollards, rings, moorings, etc.) along the pier, and vessels using the pier set up their own private mooring arrangements. |

| | |
|--------------------|------|
| Aids to Navigation | None |
| | |

| | |
|---------------------------|--|
| Environmental Sensitivity | Special Area of Conservation (SAC), Special Site of Scientific Interest (SSSI), Special Protection Area (SPA), and a Regionally Important Geological Site (RIGS) |
|---------------------------|--|



| Oil Pollution Hazard | Responsibility | Control | |
|----------------------|--|--|--------|
| General Oil Spillage | Fife Council | Provision of signage stating the organisations to be contacted in the event of an oil spillage when the Harbour Master is not on duty – maximum response time 90 minutes | |
| | | Competent trained operatives including accredited to MCA1 and or MCA4 Oil spill response | |
| | | Provision and storage of Tier 1 oil pollution clean-up and containment materials | |
| | | Equipment | Number |
| | | 3m x 13cm Spaghetti Water Boom | 0 |
| | | 50cm x 40cm Absorbent Pads | 0 |
| | Protective Chemical Suit | 0 | |
| | Provision for Tier 2 Specialist Contractor | | |
| Oil Pollution Action | Contact Fife Council immediately Fife Council will implement the Oil Pollution Response Procedure to effectively manage and mitigate the impact of oil pollution incidents. | | |

