

Temporary Road Closure

WHERE ? Spitalfield Crescent, Inverkeithing (for its entire length).

The alternative route for through traffic is via Spittalfield Road.

Access for emergency service vehicles will be maintained.

Access for resident's vehicles will be at contractor's discretion.

Pedestrian access will be maintained.

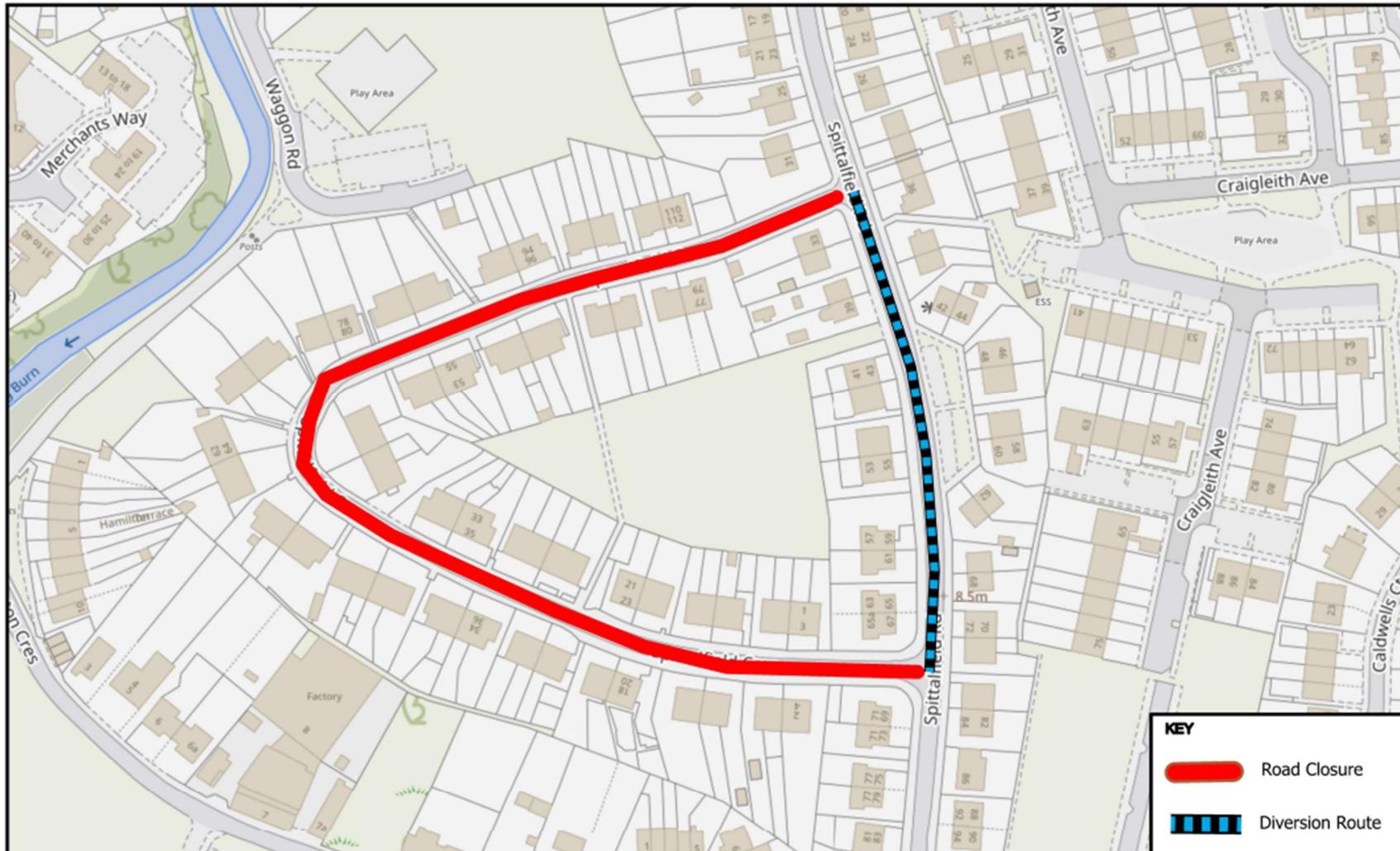
WHEN ? From 7.30am until 5.30pm Wednesday 17th September 2025 or until earlier completion of works.

WHY ? To allow carriageway patching works to be carried out in safety.

WHO ? Fife Council Roads & Transportation Services are responsible for these works and can be contacted as follows:

Emergency/Out of Hours: 03451 55 00 99





© Crown copyright and database rights 2025.
Ordnance Survey 100023385
Aerial Photography © copyright Getmapping.

N
Scale: 1:1,512

Spittalfield Crescent, Inverkeithing.

Prepared By: BAZ
Service: Roads & Transportation



**The Road Traffic (Temporary Restrictions)
Procedure Regulations 1992**

