
 <p>Roads and Transportation Services Flooding, Shoreline and Harbour Team Bankhead Central Bankhead Park Glenrothes KY7 6GH</p>	 <h1>HARBOUR FACT SHEET</h1>				
<p>Web Site: www.nqcommunitytrust.org.uk www.northqueensferryboatclub.co.uk</p> <p>Email: nq.community.trust@gmail.com moorings@northqueensferryboatclub.co.uk</p> <p>Telephone: 07857 963074 (NCQT) 01383 415678 (NQBC)</p>	<h2>North Queensferry Railway Pier</h2> <p>3 Carlingnose Point, North Queensferry, KY11 1ER</p> <table><tr><td>Harbour Masters</td><td>North Queensferry Boat Club (NQBC)</td><td>North Queensferry Community Trust (NCQT)</td></tr></table>	Harbour Masters	North Queensferry Boat Club (NQBC)	North Queensferry Community Trust (NCQT)	
Harbour Masters	North Queensferry Boat Club (NQBC)	North Queensferry Community Trust (NCQT)			
<p>The day-to-day management of this harbour is the responsibility of the NQBC and NCQT. Please direct all initial communications via the contact details provided above.</p>					
<p>Landowner: Fife Council</p>	<table><tr><td>Telephone: 03451 555 555 Ext.460556</td><td>Web Site: www.fife.gov.uk</td></tr><tr><td>Out of Hours: 03451 550 099</td><td>Email: Harbours@Fife.gov.uk</td></tr></table>	Telephone: 03451 555 555 Ext.460556	Web Site: www.fife.gov.uk	Out of Hours: 03451 550 099	Email: Harbours@Fife.gov.uk
Telephone: 03451 555 555 Ext.460556	Web Site: www.fife.gov.uk				
Out of Hours: 03451 550 099	Email: Harbours@Fife.gov.uk				

Description	North Queensferry Railway Pier consists of a single pier running in a north south direction and was an old pier for ferries prior to the construction of the various Forth Bridges.				
Location	Northern shore of the Firth of Forth			Imray chart No	C27
Limits	The harbour limits, are outlined in the Schedule to the Fife Council Harbours Byelaws 1996, broadly extend as follows: <ul style="list-style-type: none">Approximately 200m to the west of the pier250m south of the pier head, and east as far as the Forth Rail Bridge.				
Approach	The approach to the pier is relatively open from the southeast through to the southwest. There are no official navigation marks on the pier. The NQCT and NQBC can be contacted for detailed local information regarding a safe approach to the pier and mooring areas.				
Usage	Recreational vessels				
Latitude (Entrance)	56.008752N	Longitude (Entrance)	3.399438W	Grid Reference	312839,680419
Tidal Range	0.1 to 5.9 m (Chart Datum)	Neap Tide	2.5 m	Spring Tide	5.0 m
Navigational Access	No	Tide Gauge	No	Berths	40-50
Tugs	No	Anchorage	No	Pilotage	No
Cargo Handling	No	Repair facilities	Contact NCQT	ISPS Compliant	N/A
Maximum Draft	2 m approx.	Maximum Length	12 m	Maximum Beam	N/A

Control Depths/Drafts	Location	Bed Material	Bed Level	Keel Clearance	Note
	Approach to Slipway and Mooring areas	Unknown	Unavailable	Min 1 m	Dry out at low spring tides
	The Pier is managed to a third party, Fife Council have no current records of seabed levels. For further information please contact the NCQT or NQBC.				

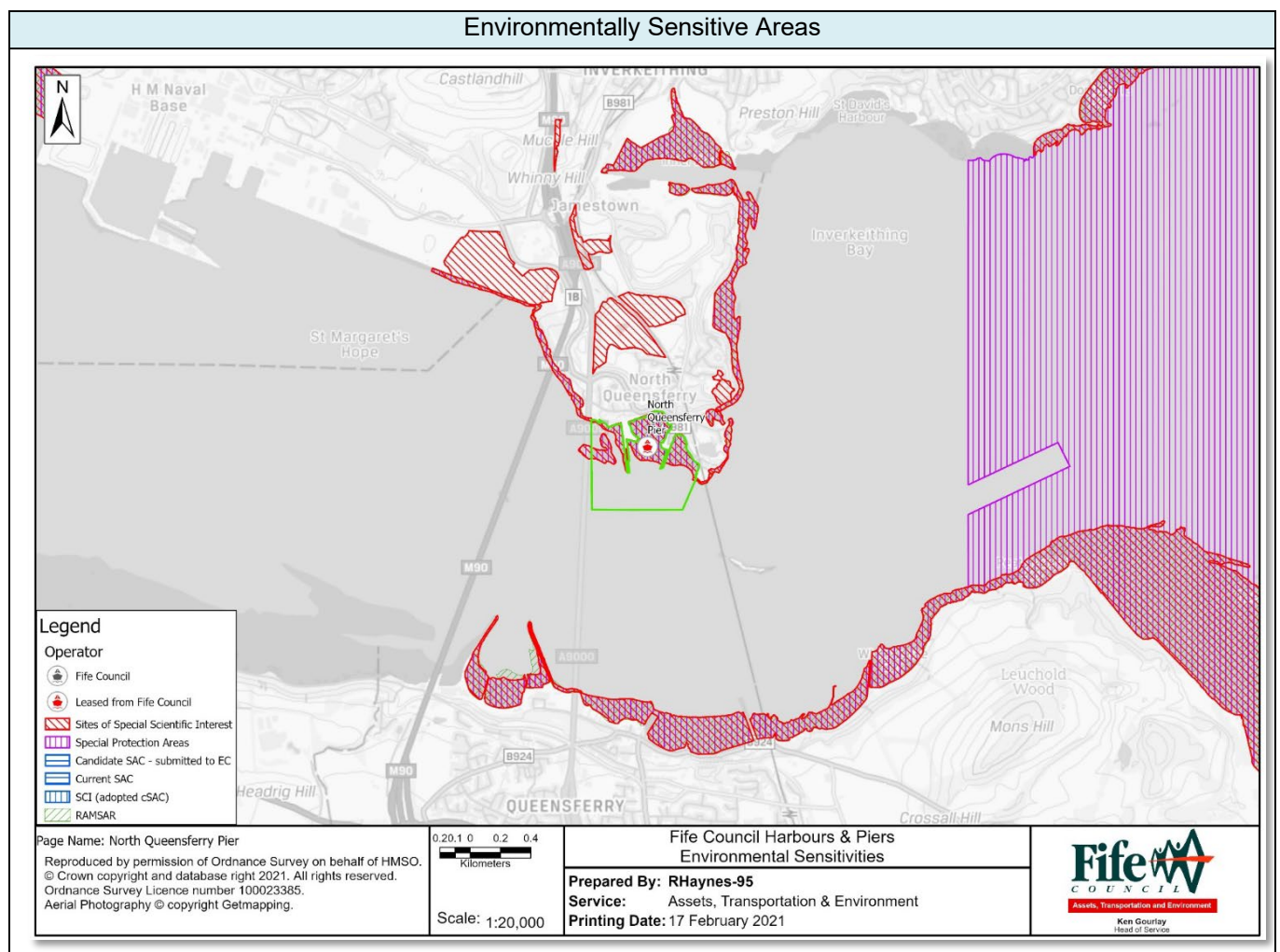
Communication	VHF	Calling and Distress/Safety	16	Harbour Operations	11
---------------	-----	-----------------------------	----	--------------------	----

Control	Vessels should contact NCQT or NQBC for access and mooring locations, with contact details on their websites. If no one is available, vessels must leave or depart the pier cautiously, watching for other vessels				
---------	--------------------------------------------------------------------------------------------------------------------------------------------------------------------------------------------------------------------	--	--	--	--

Operating Constraints	Approximately half the length of the pier (southern half) is retained by FC, but due to its poor condition it is formally closed to vessels and is not used.
	Due to the relatively shallow nature of the approaches to the pier, high winds and large waves can make the area difficult to navigate.
	When visibility is restricted vessels should consider whether it's safe to enter / leave the slipway / moorings based on the equipment they have on their vessel and the local knowledge of the skipper.
	The northern half of the pier, slipway, boat yard, and inner bay area are managed by the North Queensferry Community Trust (NQCT). Vessels either launch from the slipway or use the inner bay moorings, which are shallow and suitable for vessels that can dry out. There are no specific length, width, or draft constraints. Vessels must contact NQCT to discuss operating constraints
	The outer bay moorings, east of the pier, are managed by the North Queensferry Boat Club (NQBC). Vessels intending to use these moorings should contact NQBC. Most of these moorings dry out, so they are only suitable for vessels that can safely dry out
	The main shipping lane in the Forth runs a few hundred metres off the pier head. Vessels entering or exiting the area covered by the FC Harbour Byelaws must proceed with extreme caution and keep a lookout for ships. Large vessels are restricted in their ability to manoeuvre and must stay within the shipping lane. Recreational vessels should not loiter in the lane and must cross it at right angles when safe.

Aids to Navigation	None

Environmental Sensitivity	Special Area of Conservation (SAC), Special Site of Scientific Interest (SSSI), Special Protection Area (SPA), and a Regionally Important Geological Site (RIGS)
---------------------------	------------------------------------------------------------------------------------------------------------------------------------------------------------------



Oil Pollution Hazard	Responsibility	Control	
General Oil Spillage.	North Queensferry Community Trust	Procedures on safe operation and emergencies	
		Provision of signage stating the organisations to be contacted in the event of an oil spillage	
General Oil Spillage	Fife Council Note: Oil spill response if required shall be initiated by the local operator and forwarded to Fife Council for action. Spill kits are not provided on site. Fife Council shall assess and provide equipment should action be required.	Provision of signage stating the organisations to be contacted in the event of an oil spillage when the Harbour Master is not on duty – maximum response time 90 minutes	
		Competent trained operatives including accredited to MCA1 and or MCA4 Oil spill response	
		Provision and storage of Tier 1 oil pollution clean-up and containment materials	
		Equipment	Number
		3m x 13cm Spaghetti Water Boom	0
		50cm x 40cm Absorbent Pads	0
		Protective Chemical Suit	0
Provision for Tier 2 Specialist Contractor			
Oil Pollution Action	Contact Fife Council immediately Fife Council will implement the Oil Pollution Response Procedure to effectively manage and mitigate the impact of oil pollution incidents.		

Booming Locations



★ Fife Council Harbours - Spill Kit Locations ■ Boom Locations □ Fife Council Harbour Byelaw Boundaries Where no spill kit location noted, equipment will be transported from nearest available stockpile

Page Name: North Queensferry Harbour

Reproduced by permission of Ordnance Survey on behalf of HMSO.
© Crown copyright and database right 2021. All rights reserved.
Ordnance Survey Licence number 100023385.
Aerial Photography © copyright Getmapping.

0.05 0.03 0 0.05
Kilometers

Scale: 1:3,000

Fife Council Harbours & Piers
Harbour Details

Prepared By: RHaynes-95

Service: Assets, Transportation & Environment

Printing Date: 17 February 2021

