
 <p>Roads and Transportation Services Flooding, Shoreline and Harbour Team Bankhead Central Bankhead Park Glenrothes KY7 6GH</p>	 <h1>HARBOUR FACT SHEET</h1>
<p>Web Site: www.fife.gov.uk</p> <p>Email: Harbours@Fife.gov.uk</p> <p>Telephone: 03451 555555 Ext 461541</p> <p>Out of Hours: 03451 55 00 99</p>	<h2>Anstruther Harbour</h2> <p>Shore Street, Anstruther, KY10 3AQ</p> <p>Lead Harbour Master Allan Anderson</p> <p>Harbour Master N/A</p>

Description	The harbour has two basins and four piers. The East Basin, exposed to wave action especially in winter, is not used for permanent year-round mooring but accommodates creel boats and other vessels for short stays. The West Basin hosts permanent recreational craft, creel fishing boats, and commercial vessels. Anstruther Wester Pier is a historic pier and has no current use by any vessels.				
Location	Northern shore of the Firth of Forth		Imray chart No	C27	
Limits	<div>The harbour limits, are outlined in the Schedule to the Fife Council Harbours Byelaws 1996, broadly extend as follows:</div> <ul style="list-style-type: none">Approximately 175m to the south of the East Pier Head140m to the east of the East Pieralong to the shoreline to the west of the harbour.				
Approach	The harbour is open from the southeast to the southwest. The entrance is shallow, especially at low tide, with shoals and rocks extending from the West Pier. The East Pier has a red beacon pole with a flashing green light, while the West Pier has an unlit white lighthouse and a grey post with two fixed red lights. White leading poles at the rear of the East Basin provide a leading transit of 019° with fixed green lights at night.				
Usage	Fishing vessels. Commercial vessels				
Latitude (Entrance)	56.221071N	Longitude (Entrance)	2.697948W	Grid Reference	356817,703386
Tidal Range	0.1 to 5.9 m (Chart Datum)	Neap Tide	2.2 m	Spring Tide	4.5 m
Navigational Access	Leading Lights/Poles	Tide Gauge	No	Berths	100 Pontoons (8 visitors) 50 Pier Side
Tugs	No	Anchorage	No	Pilotage	No
Cargo Handling	No	Repair facilities	Drying Beach	ISPS Compliant	N/A
Maximum Draft	2.4 m	Maximum Length	11 m	Maximum Beam	8 m

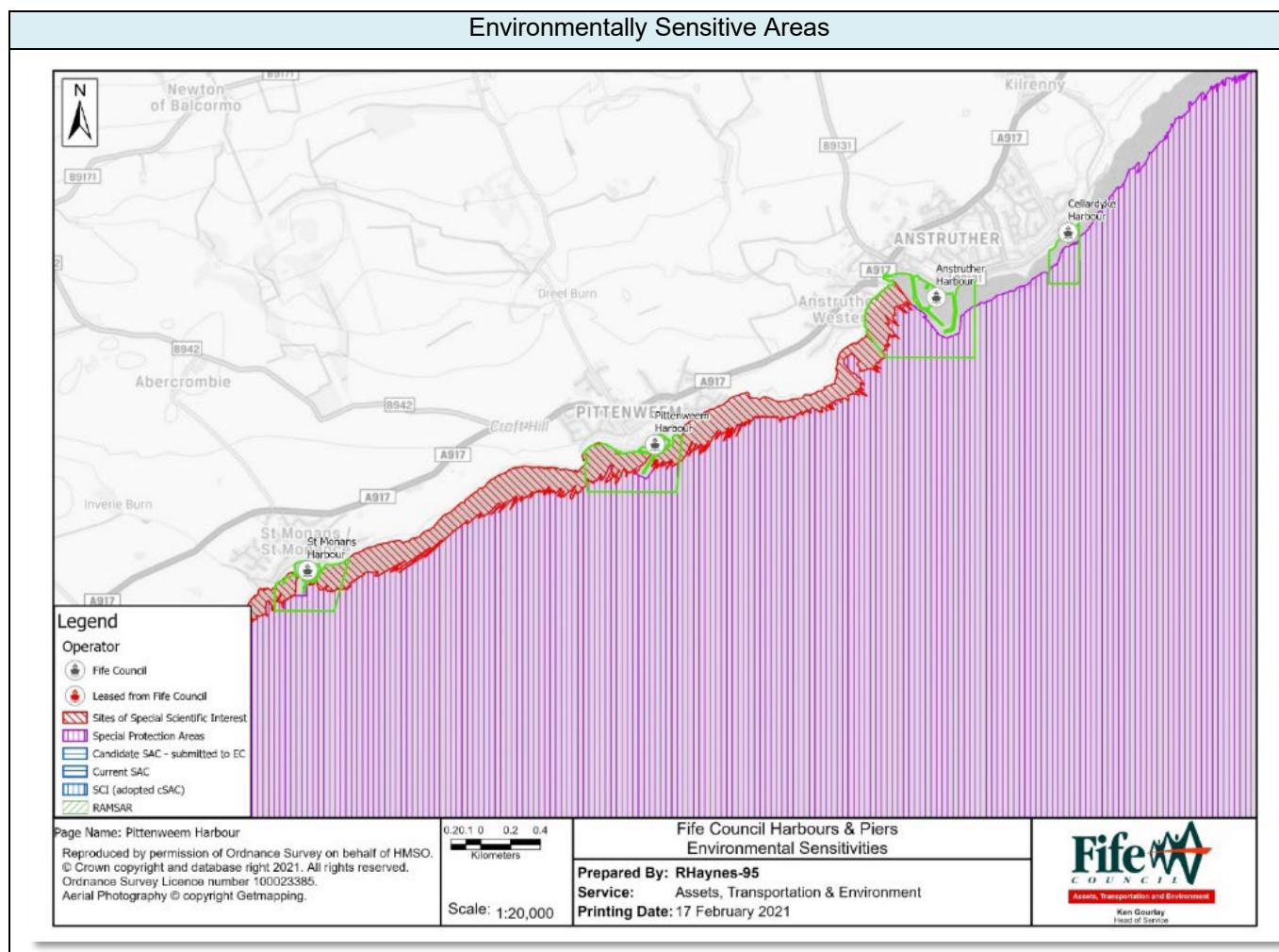
Control Depths/Drafts	Location	Bed Material	Bed Level	Keel Clearance	Note
	Harbour Mouth along West Pier	Sand / Silt	0.6 to 1.2 m (Chart Datum)	Min 1 m	Prone to Silting
	East Basin	Sand / Silt	0.6 to 2.0 m (Chart Datum)	N/A	Restricted Mooring
	West Basin (W) Access Channel	Sand / Silt Limited Rocks	0.9 to 1.8 m (Chart Datum)	N/A	Prone to Silting
	West Basin (W) at Pontoons	Sand / Silt Limited Rocks	1.2 to 1.8 m (Chart Datum)	N/A	Prone to Silting Berthing location by HarbourMaster

Communication	VHF	Calling and Distress/Safety	16	Harbour Operations	11
---------------	-----	-----------------------------	----	--------------------	----

Operating Constraints	In high winds and / or large easterly swells the approach to the entrance channel can be very difficult and the Harbour Masters advice must be sought prior to arrival or departure
	In restricted visibility the Harbour Master will determine whether vessels can safely leave or enter
	The approach to the harbour entrance is relatively shallow, particularly around low water, and the seabed shoals to the west where there are also rocks running out from the West Pier
	The entrance into the harbour is around 40m in width, but the entrance into the west basin is much narrower at around 11m in width
	Both the east and west basins dry out completely at low spring tides right up to the harbour mouth, but both basins have a sandy bed
	If mooring on the pontoons, access is controlled by a fob-operated security gate system. Permanent berth holders and visitors can obtain fobs from the Harbour Master. Visitors should arrange in advance with the Harbour Master to collect a fob for their stay. An emergency exit button is located next to each security gate, allowing visitors to exit the pontoon system.

Aids to Navigation	2 FR vert 5m 4M - West Pier Head (Grey Post)
	FI G 3s 6m 4M - East Pier Head (Red Beacon Pole)
	F G 7m 4M - Front Leading Light (White Marker Board on Pole) (Leading Line 019°)
	F G 11m 4M - Rear Leading Light (White Marker Board on Pole) (Leading Line 019°)

Environmental Sensitivity	Special Area of Conservation (SAC), Special Site of Scientific Interest (SSSI), Special Protection Area (SPA), and a Regionally Important Geological Site (RIGS)
---------------------------	--



Oil Pollution Hazard	Responsibility	Control	
General Oil Spillage	Fife Council	Provision of signage stating the organisations to be contacted in the event of an oil spillage when the Harbour Master is not on duty – maximum response time 90 minutes	
		Competent trained operatives including accredited to MCA1 and or MCA4 Oil spill response	
		Provision and storage of Tier 1 oil pollution clean-up and containment materials	
		Equipment	Number
		3m x 13cm Spaghetti Water Boom	10
		50cm x 40cm Absorbent Pads	50
	Protective Chemical Suit	1	
		Provision for Tier 2 Specialist Contractor	
Oil Pollution Action	Contact Fife Council immediately Fife Council will implement the Oil Pollution Response Procedure to effectively manage and mitigate the impact of oil pollution incidents.		

Booming Locations

