

Temporary Road Closure

WHERE ? Loanhead Avenue, Lochore (from Torres Loan to Jct. Lochleven Road B920).

The alternative route for through traffic is via Rosewell Drive, Lochleven Road(B920) & Balbedie Avenue.

Access for emergency service vehicles and residents will be maintained.

Pedestrian access will be maintained.

WHEN ? From 8am Monday 19th May 2025 to 5pm Friday 28th May 2025.

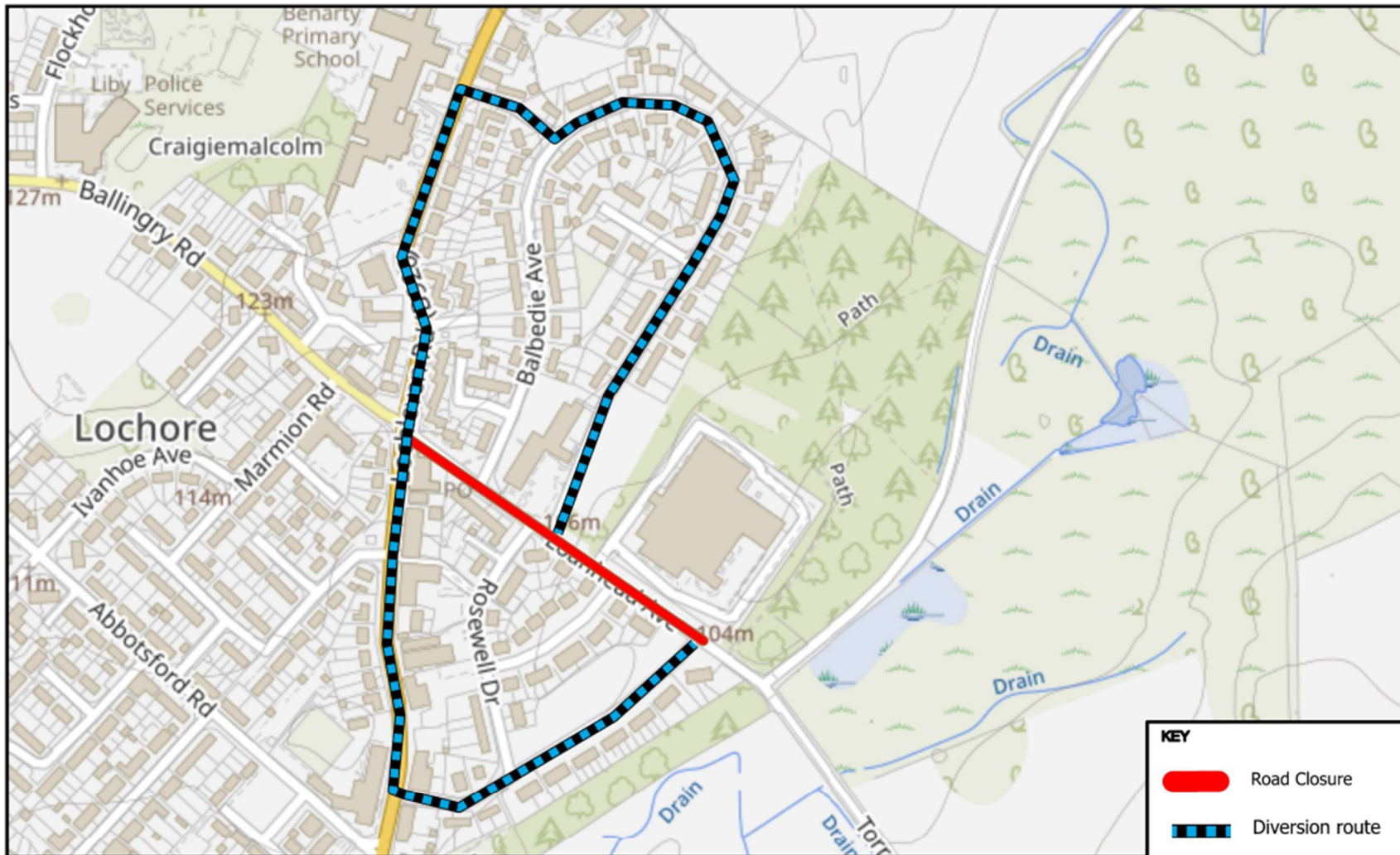
WHY ? To allow carriageway resurfacing works to be carried out in safety.

WHO ? Fife Council Transportation Services are responsible for these works and can be contacted as follows:

Project Engineer: 03451 55 55 55 Ext 475586

Emergency/Out of Hours: 03451 55 00 99





© Crown copyright and database rights 2025.
 Ordnance Survey 100023385
 Aerial Photography © copyright Getmapping.

N

 Scale: 1:3,800

Loanhead Avenue, Lochore.

Prepared By: BL
Service: Roads & Transportation



The Fife Council (Loanhead Avenue, Lochore) (Temporary Prohibition of Use) Order 2025



www.fife.gov.uk/notices

08/05/25