
 <p>Roads and Transportation Services Flooding, Shoreline and Harbour Team Bankhead Central Bankhead Park Glenrothes KY7 6GH</p>		<h1>HARBOUR FACT SHEET</h1>
<p>Web Site: www.dysartsailingclub.com</p> <p>Email: dysartsail@gmail.com</p> <p>Telephone: 07982 626014</p>	<h2>Dysart Harbour</h2> <p>1 Glen Clova Place, Kirkcaldy, KY2 6UL (Secretary)</p> <p>Lead Harbour Master Dysart Sailing Club (DSC)</p>	
<p>The day-to-day management of this harbour is the responsibility of Dysart Sailing Club. Please direct all initial communications via the contact details provided above.</p>		
<p>Landowner: Fife Council</p>	<p>Telephone: 03451 555 555 Ext.460556 Out of Hours: 03451 550 099</p>	<p>Web Site: www.fife.gov.uk Email: Harbours@Fife.gov.uk</p>

Description	The harbour has two basins and three piers,				
Location	Northern shore of the Firth of Forth		Imray chart No	C27	
Limits	There are no defined harbour limits Dysart harbour is not covered by the Fife Council Harbours Byelaws 1996				
Approach	The harbour is relatively open from the southeast through to the southwest. The approach to the harbour entrance is relatively shallow, particularly around low water, and the seabed shoals to the north onto the shore. There are also rocks to the west of the approach to the harbour. There are no official navigation marks on the harbour piers, and Dysart Sailing Club can be contacted for further information regarding a safe approach to the harbour.				
Usage	Fishing vessels. Recreational vessels.				
Latitude (Entrance)	56.122402N	Longitude (Entrance)	3.124055W	Grid Reference	330215,692754
Tidal Range	0.1 to 5.9 m (Chart Datum)	Neap Tide	2.2 m	Spring Tide	4.5 m
Navigational Access	No	Tide Gauge	No	Berths	80 Pier side Moorings
Tugs	No	Anchorage	No	Pilotage	No
Cargo Handling	No	Repair facilities	Contact DSC	ISPS Compliant	N/A
Maximum Draft	2 m	Maximum Length	25 m	Maximum Beam	9 m

Control Depths/Drafts	Location	Bed Material	Bed Level	Keel Clearance	Note
	General	Sand / Silt	Unavailable	Min 1 m	Prone to Silting
	The Harbour is leased to a third party, Fife Council have no current records of seabed levels at the Harbour. For further information please contact Dysart Sailing Club.				

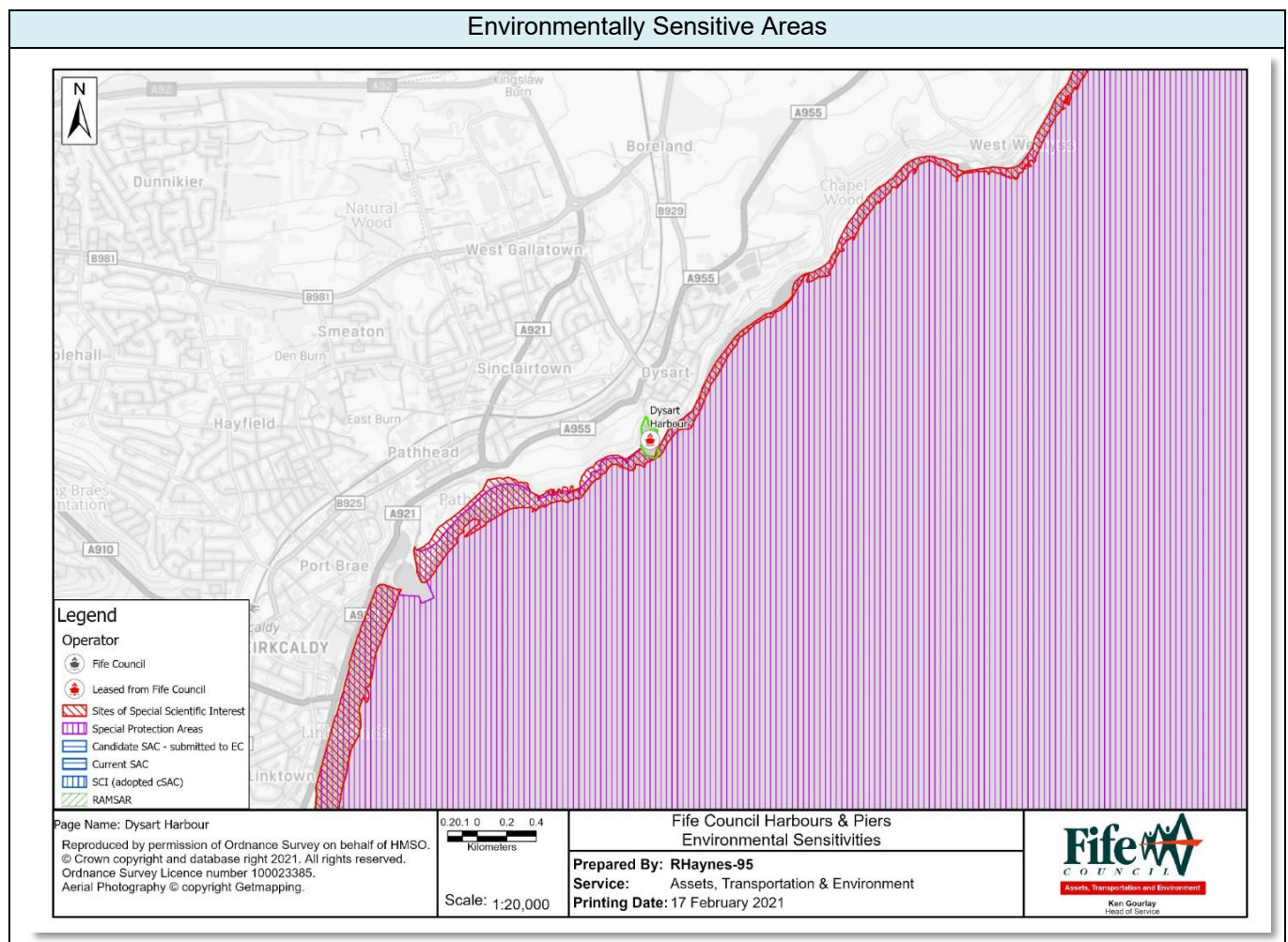
Communication	VHF	Calling and Distress/Safety	16	Harbour Operations	11
---------------	-----	-----------------------------	----	--------------------	----

Control	Vessels intending to enter or leave Dysart are advised to contact the Dysart Sailing Club, who lease and manage the harbour area.
---------	---

Operating Constraints	The approach to the harbour entrance is relatively shallow, particularly around low water, and the seabed shoals to the north onto the shore. There are also rocks to the west of the approach to the harbour.
	In high winds and / or large wave / swell conditions the approach to the entrance can be very difficult and the Harbour Master's advice must be sought prior to arrival or departure
	In restricted visibility the DSC Harbour Master will determine whether vessels can safely leave or enter
	The entrance into the harbour is around 18m in width
	The basins dry out completely at low spring tides right up to and beyond the harbour mouth, but the basins have a sandy / silty bed

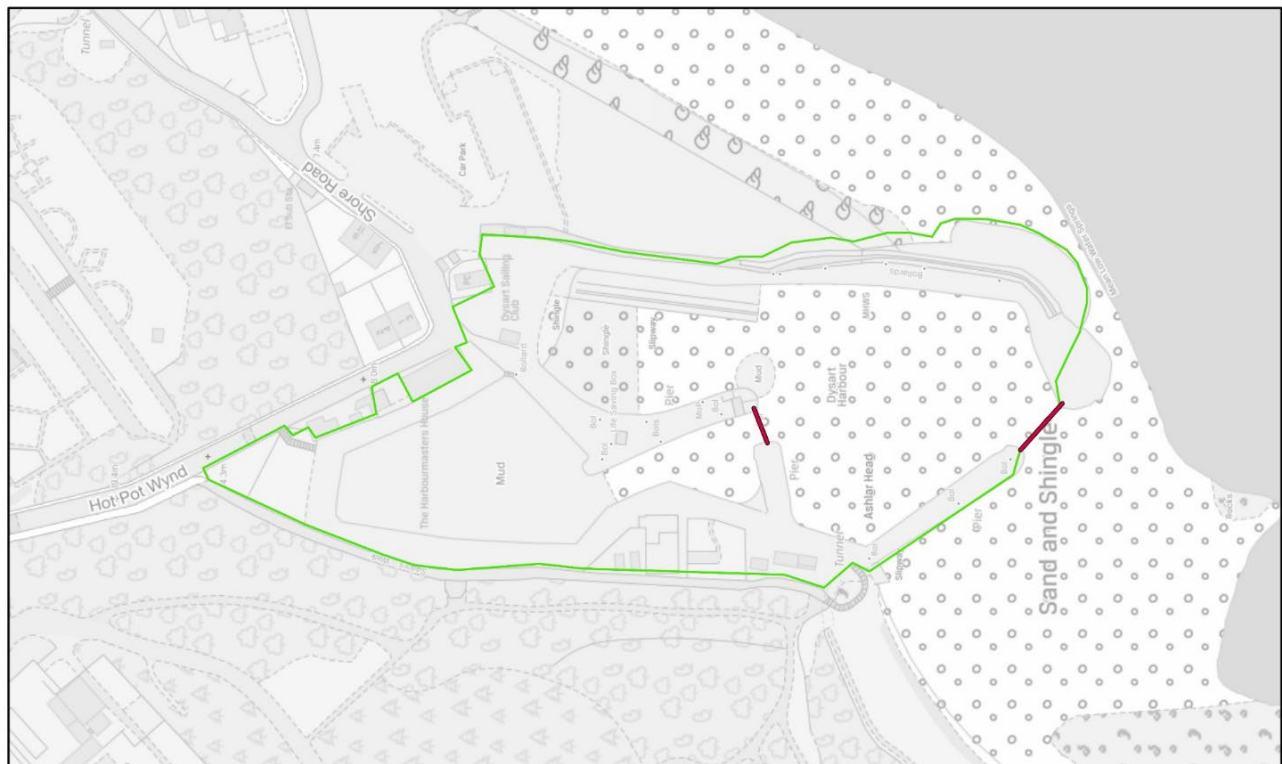
Aids to Navigation	None

Environmental Sensitivity	Special Area of Conservation (SAC), Special Site of Scientific Interest (SSSI), Special Protection Area (SPA), and a Regionally Important Geological Site (RIGS)
---------------------------	--



Oil Pollution Hazard	Responsibility	Control	
General Oil Spillage.	Dysart Sailing Club	Procedures on safe operation and emergencies	
		Provision of signage stating the organisations to be contacted in the event of an oil spillage	
General Oil Spillage	Fife Council Note: Oil spill response if required shall be initiated by the local operator and forwarded to Fife Council for action. Spill kits are not provided on site. Fife Council shall assess and provide equipment should action be required.	Provision of signage stating the organisations to be contacted in the event of an oil spillage when the Harbour Master is not on duty – maximum response time 90 minutes	
		Competent trained operatives including accredited to MCA1 and or MCA4 Oil spill response	
		Provision and storage of Tier 1 oil pollution clean-up and containment materials	
		Equipment	Number
		3m x 13cm Spaghetti Water Boom	0
		50cm x 40cm Absorbent Pads	0
		Protective Chemical Suit	0
Provision for Tier 2 Specialist Contractor			
Oil Pollution Action	Contact Fife Council immediately Fife Council will implement the Oil Pollution Response Procedure to effectively manage and mitigate the impact of oil pollution incidents.		

Booming Locations



★ Fife Council Harbours - Spill Kit Locations — Boom Locations — Fife Council Harbour Byelaw Boundaries Where no spill kit location noted, equipment will be transported from nearest available stockpile

Page Name: Dysart Harbour

Reproduced by permission of Ordnance Survey on behalf of HMSO.
© Crown copyright and database right 2021. All rights reserved.
Ordnance Survey Licence number 100023385.
Aerial Photography © copyright Getmapping.

0.01 0.01 0 0.01
Kilometers

Scale: 1:1,000

Fife Council Harbours & Piers
Harbour Details

Prepared By: RHaynes-95

Service: Assets, Transportation & Environment

Printing Date: 17 February 2021

