



Roads and Transportation Services
Flooding, Shoreline and Harbour Team
Bankhead Central
Bankhead Park
Glenrothes KY7 6GH



HARBOUR FACT SHEET

Web Site: N/A

Email: markmaylin.mm@gmail.com

Telephone: 01383 860859

Aberdour Harbour

The Elms, The Shore, Aberdour, KY3 0TY

Harbour Master Mark Maylin

Aberdour Residents
Association (ARA)

The day-to-day management of this harbour is the responsibility of the Aberdour Residents Association.
Please direct all initial communications via the contact details provided above.

Landowner: Fife Council

Telephone: 03451 555 555 Ext.460556

Web Site: www.fife.gov.uk

Out of Hours: 03451 550 099

Email: Harbours@Fife.gov.uk

Description	The harbour has a single basin formed by a pier to the west and a headland to the east.				
Location	Northern shore of the Firth of Forth			Imray chart No	C27
Limits	The harbour limits, are outlined in the Schedule to the Fife Council Harbours Byelaws 1996, broadly extend as follows: <ul style="list-style-type: none">Approximately 225m to the south of the Pier HeadAnd a considerable distance along the shoreline to the east and west of the harbour.				
Approach	The harbour is relatively open from the southwest through to the south southeast and the seabed shoals relatively gently on approach to the pier. The head of the Pier is marked by a tall metal pole.				
Usage	Recreational vessels				
Latitude (Entrance)	56.052396N	Longitude (Entrance)	2.293935W	Grid Reference	319508,685148
Tidal Range	0.1 to 5.9 m (Chart Datum)	Neap Tide	2.4 m	Spring Tide	4.8 m
Navigational Access	No	Tide Gauge	No	Berths	Contact ARA
Tugs	No	Anchorage	No	Pilotage	No
Cargo Handling	No	Repair facilities	Contact ARA	ISPS Compliant	N/A
Maximum Draft	2 m approx.	Maximum Length	Open Basin	Maximum Beam	Open Basin

Control Depths/Drafts	Location	Bed Material	Bed Level	Keel Clearance	Note
	Harbour Basin	Sand / Silt	Unavailable	Min 1 m	Prone to Silting
	The Harbour is managed to a third party, Fife Council have no current records of seabed levels at the Harbour. For further information please contact Aberdour Residents Association				

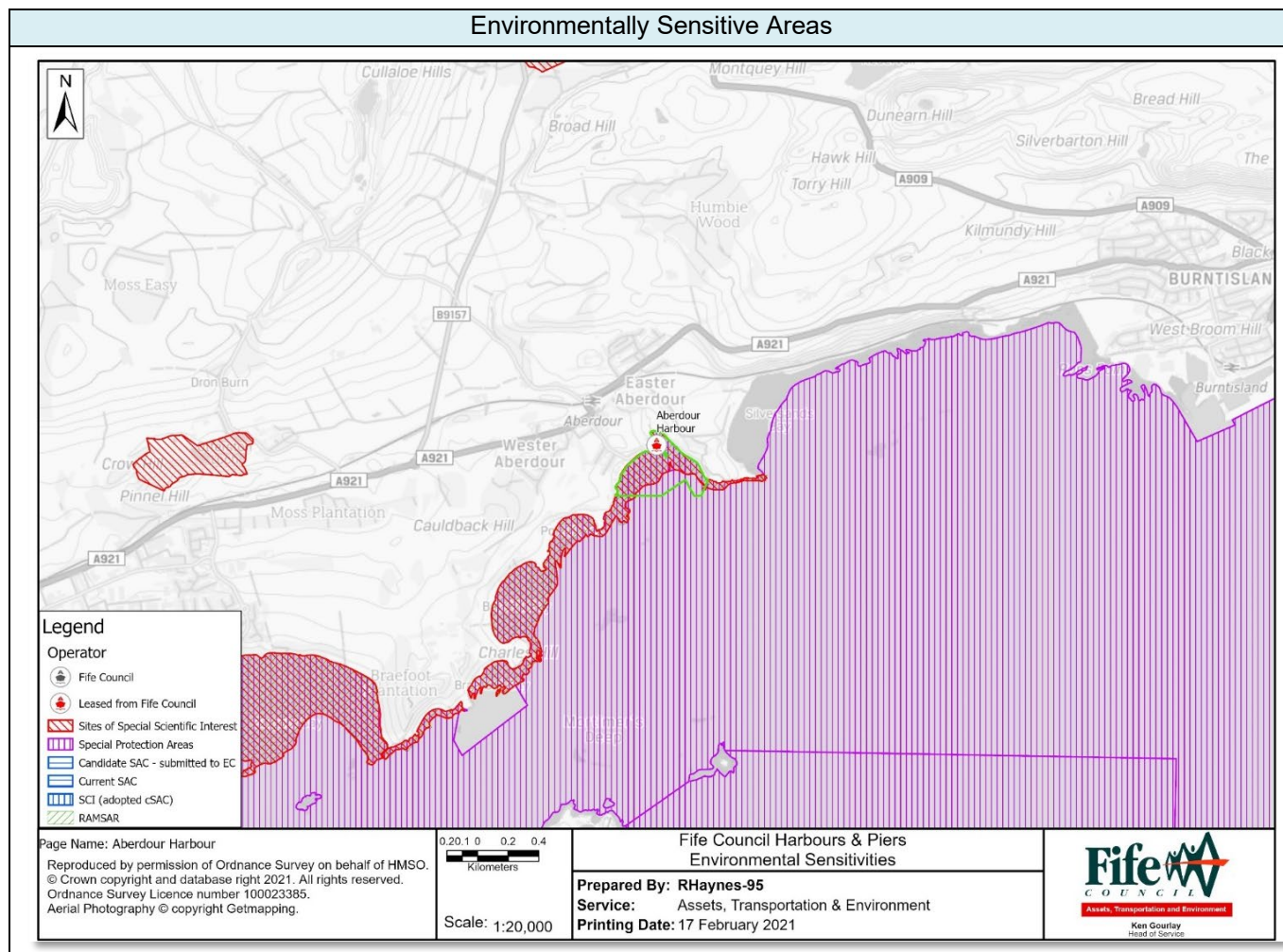
Communication	VHF	Calling and Distress/Safety	16	Harbour Operations	11
---------------	-----	-----------------------------	----	--------------------	----

Control	Vessels that are not local and are intending to enter or leave Aberdour are advised to contact the ARA Harbour Master in advance by telephone. The ARA Harbour Master is a voluntary role in the ARA and therefore there are no specific operating hours. When the ARA Harbour Master is unavailable non-local vessels must leave or depart the harbour with extreme caution keeping a lookout for other vessels leaving or departing, and must approach the basin / pier at a slow speed				
---------	---	--	--	--	--

Operating Constraints	In high winds and / or large waves the approach to the basin can be difficult at lower states of tide and the ARA Harbour Master's advice should be sought prior to arrival or departure
	In restricted visibility the ARA Harbour Master will determine whether vessels can safely leave or enter
	The approach to the basin and pier head is relatively shallow, and the entire basin dries beyond the pier head at low water and a chart and tide tables should be consulted prior to arrival or departure

Aids to Navigation	None

Environmental Sensitivity	Special Area of Conservation (SAC), Special Site of Scientific Interest (SSSI), Special Protection Area (SPA), and a Regionally Important Geological Site (RIGS)
---------------------------	--



Oil Pollution Hazard	Responsibility	Control	
General Oil Spillage.	Aberdour Residents Association	Procedures on safe operation and emergencies	
		Provision of signage stating the organisations to be contacted in the event of an oil spillage	
General Oil Spillage	Fife Council Note: Oil spill response if required shall be initiated by the local operator and forwarded to Fife Council for action. Spill kits are not provided on site. Fife Council shall assess and provide equipment should action be required.	Provision of signage stating the organisations to be contacted in the event of an oil spillage when the Harbour Master is not on duty – maximum response time 90 minutes	
		Competent trained operatives including accredited to MCA1 and or MCA4 Oil spill response	
		Provision and storage of Tier 1 oil pollution clean-up and containment materials	
		Equipment	Number
		3m x 13cm Spaghetti Water Boom	0
		50cm x 40cm Absorbent Pads	0
		Protective Chemical Suit	0
Provision for Tier 2 Specialist Contractor			
Oil Pollution Action	Contact Fife Council immediately Fife Council will implement the Oil Pollution Response Procedure to effectively manage and mitigate the impact of oil pollution incidents.		

Booming Locations

