

Memorial Garden - Site Options

Potential Sites
Initially, two sites had been identified for the memorial – one in Beverage Park, Kirkcaldy and the other in the Public Park in Dunfermline. These sites are very different in character and setting and this will influence the design concepts as the surrounding landscape presents unique opportunities. The following is a brief assessment of the two sites which considers their context and particular characteristics to identify some opportunities which will thereafter inform the design.
Subsequently three further potential sites have been identified - one in Beveridge Park and two in Public Park. These have been considered in brief as there is not the scope to review all five within the timescale but elements of the proposals could be applied to other sites if the concepts were viewed favourably.

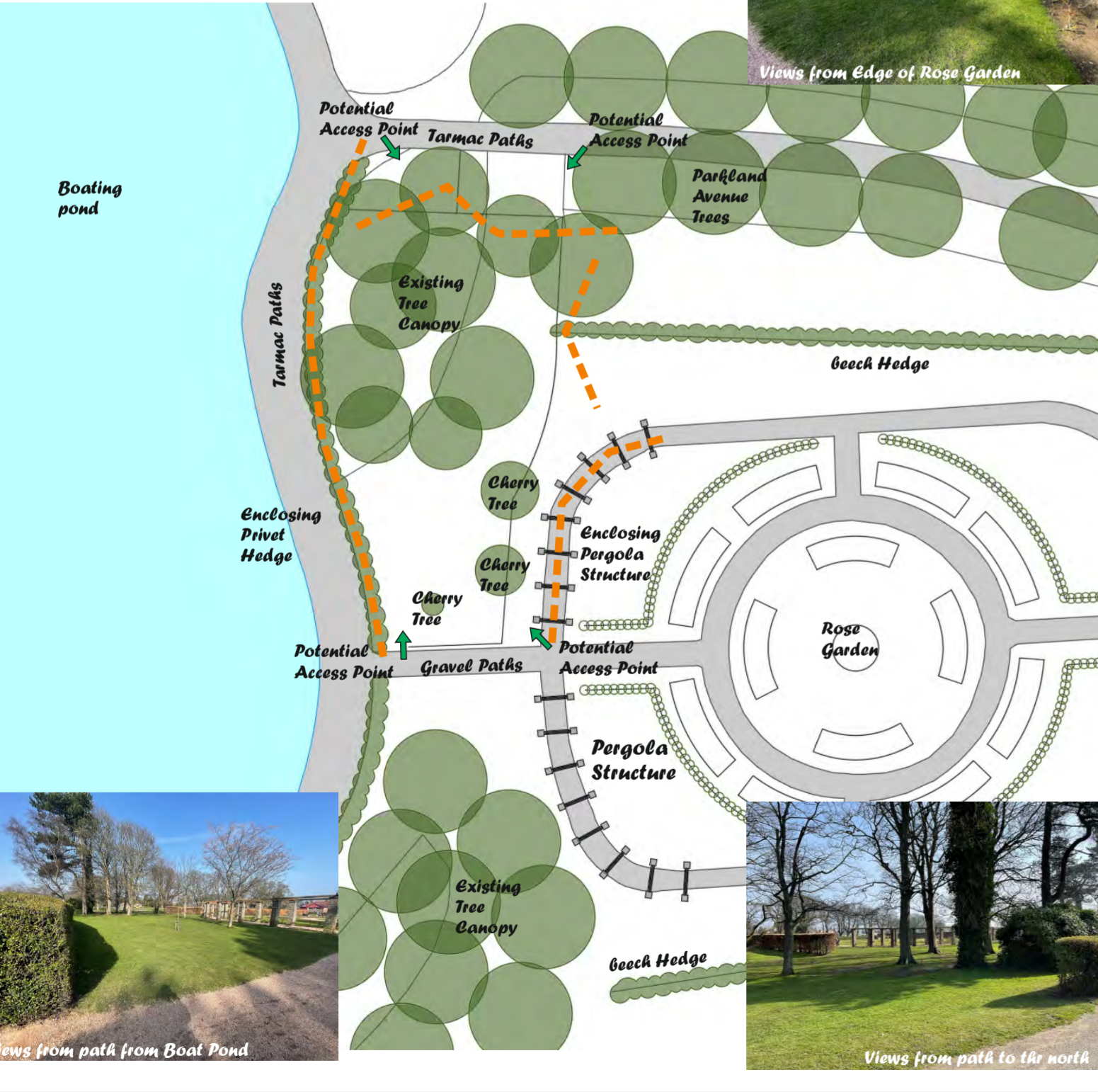
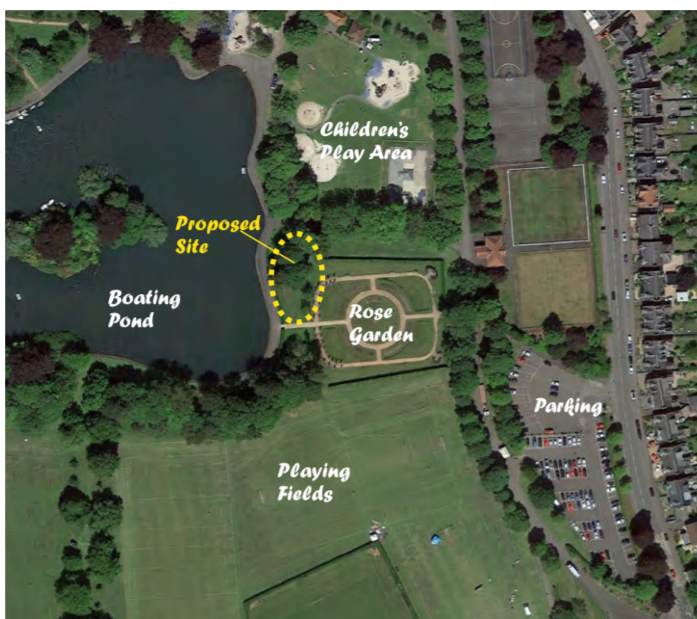
Site B1 Beverage Park, Kirkcaldy

The site at Beverage Park in Kirkcaldy sits in a small space between the formal rose garden and the boating pond on the eastern side of the park. To the north is a well-used children's play area and to the south are playing fields.

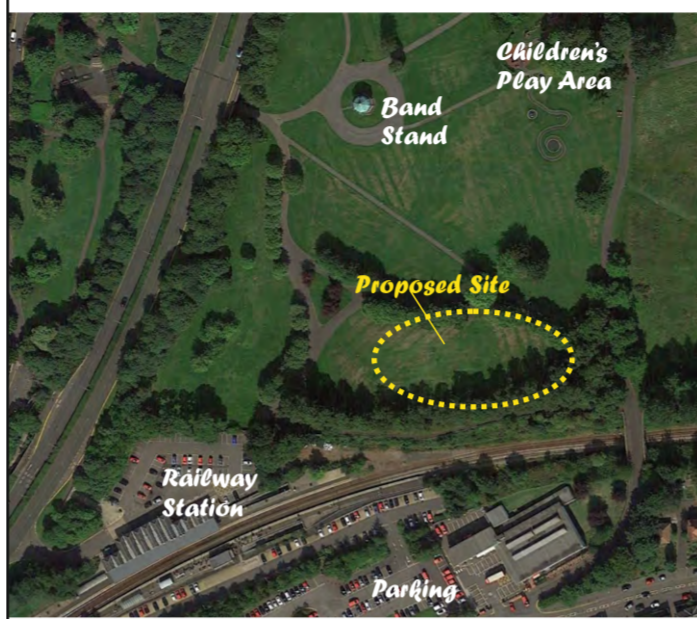
It is therefore a well-used area of what is a very busy public park generally. The site itself is quite enclosed however with mature trees to the northern end and a thick privet hedge to the west. The rose garden path and pergola structure mark the eastern boundary and a footpath lies to the south. These features create a partially enclosed space with the tree canopy creating quite an introspective space which could form quite a private garden area. This could be an island of tranquillity within the park whilst being well connected to the surrounding features which would give an element of security and overwatch.

The mature trees are a prominent feature and would form a key feature of any design for the site – with the assumption that they would remain as they are. These fixed elements would form a structure for the garden space and dictate to a certain degree the arrangement of the memorial.

From the discussions with the group there was an appreciation of the idea used at Hazelhead Park in Aberdeen in creating an enclosed garden space which could be used informally by visitors who could spend time there. This could be highlighted with some specific features to commemorate the events either through a feature wall or path, or a dedicated sculpture or piece of artwork.



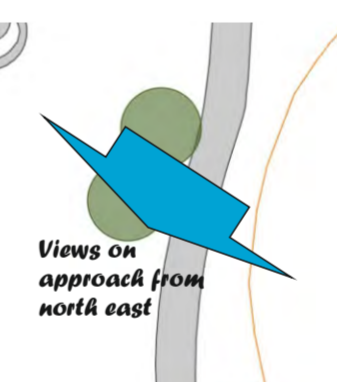
Site P1 - Public Park, Dunfermline



The character of the Public Park in Dunfermline is very different with a more expansive character with larger open spaces and a rolling topography that allows views across the park and beyond to the south across the town. The proposed site would lie to the south of the park on a raised grass area which comes to a prominent knoll above the paths to the north and west. It is surrounded by mature trees but has a strong view relationship to other areas of the park when approaching it from the northwest and northeast and from the band stand and railway station. The top of the knoll also has views outward to the southwest across Dunfermline and toward the northwest at the town centre.

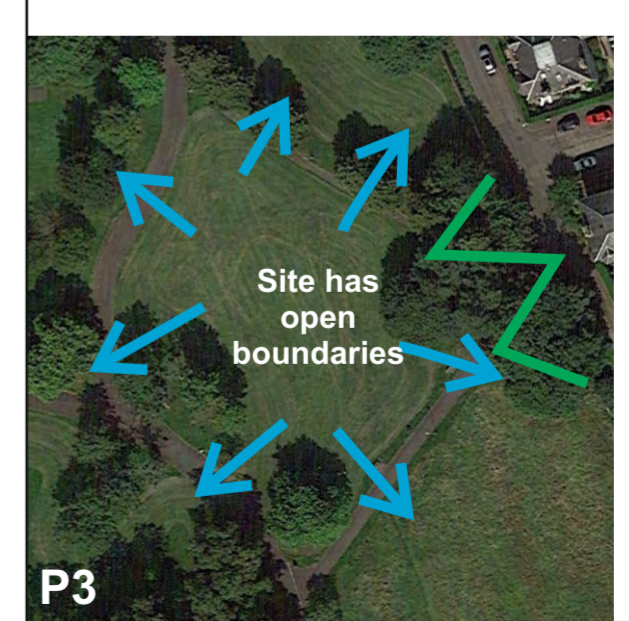
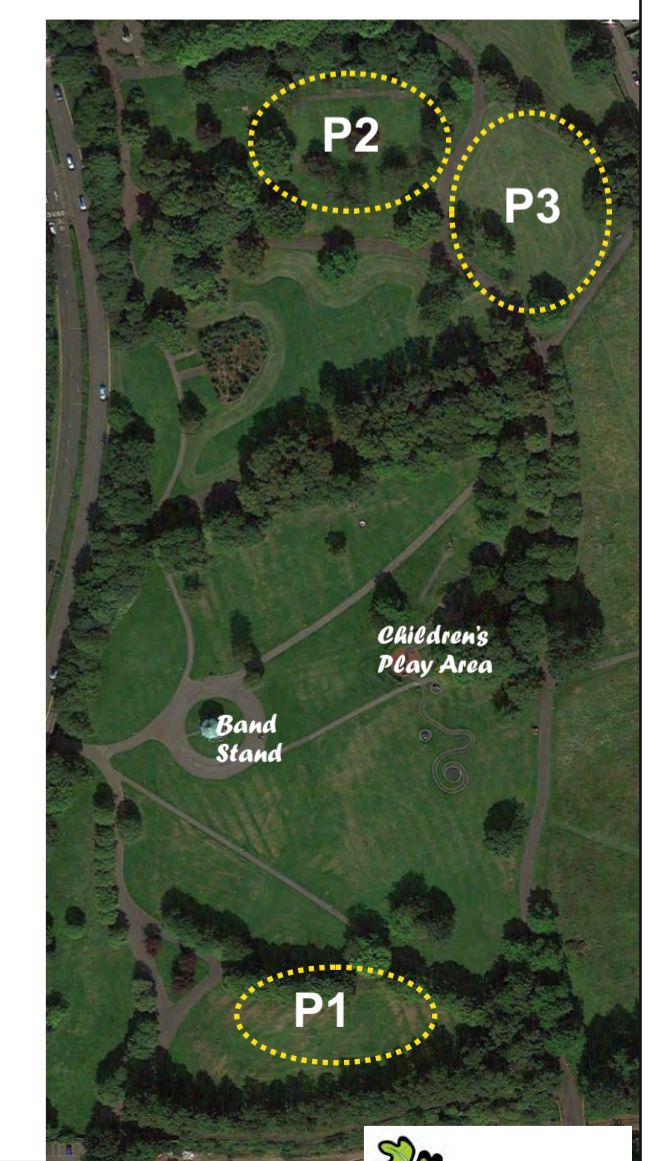
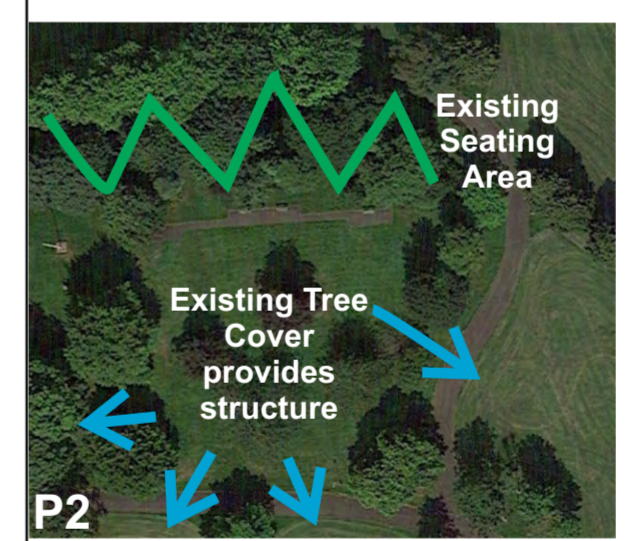
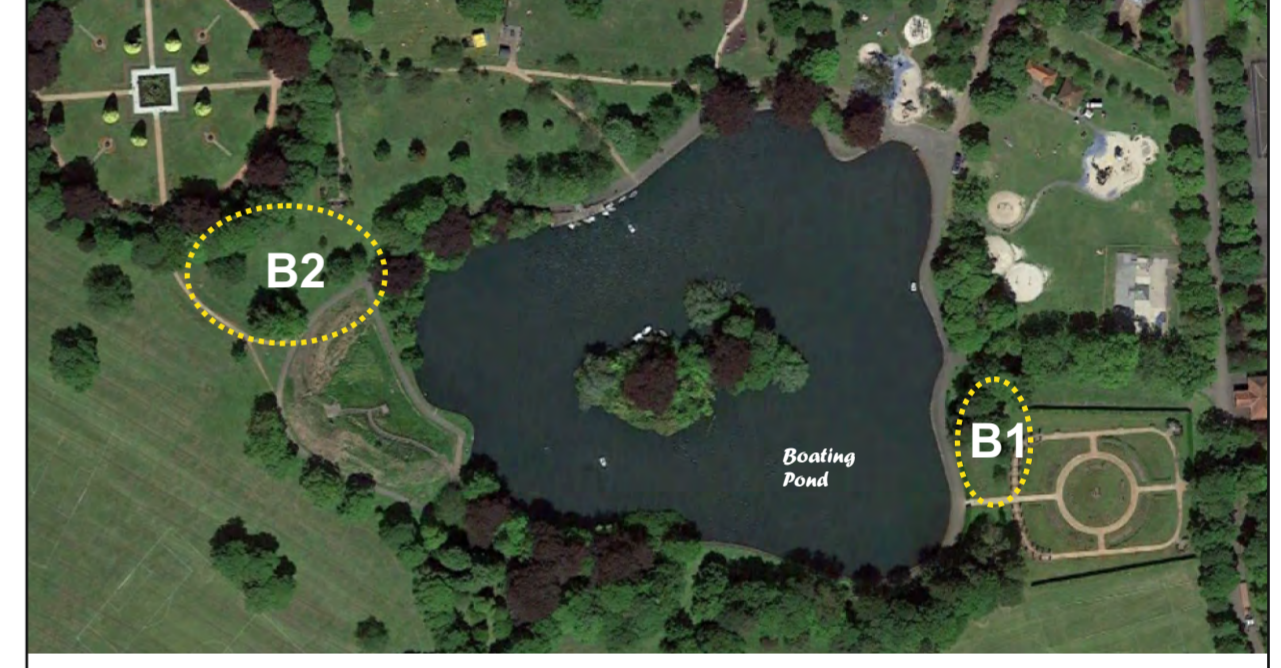
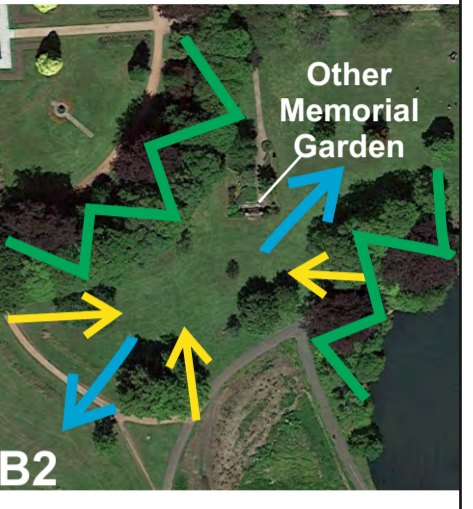
These factors give the site a far more outward looking aspect and character which would lend itself very well to the creation of a landmark feature and viewing point. This would form more of a single feature and focal point rather than a garden space which would be viewed from the wider park but also interactive with seating which would allow visitors to sit and reflect with the views across the townscape.

There is sufficient open space surrounding the knoll which would allow opportunities to create a wider feature and use the approaches to the feature in a way to tell a story and create connectivity to the wider park.

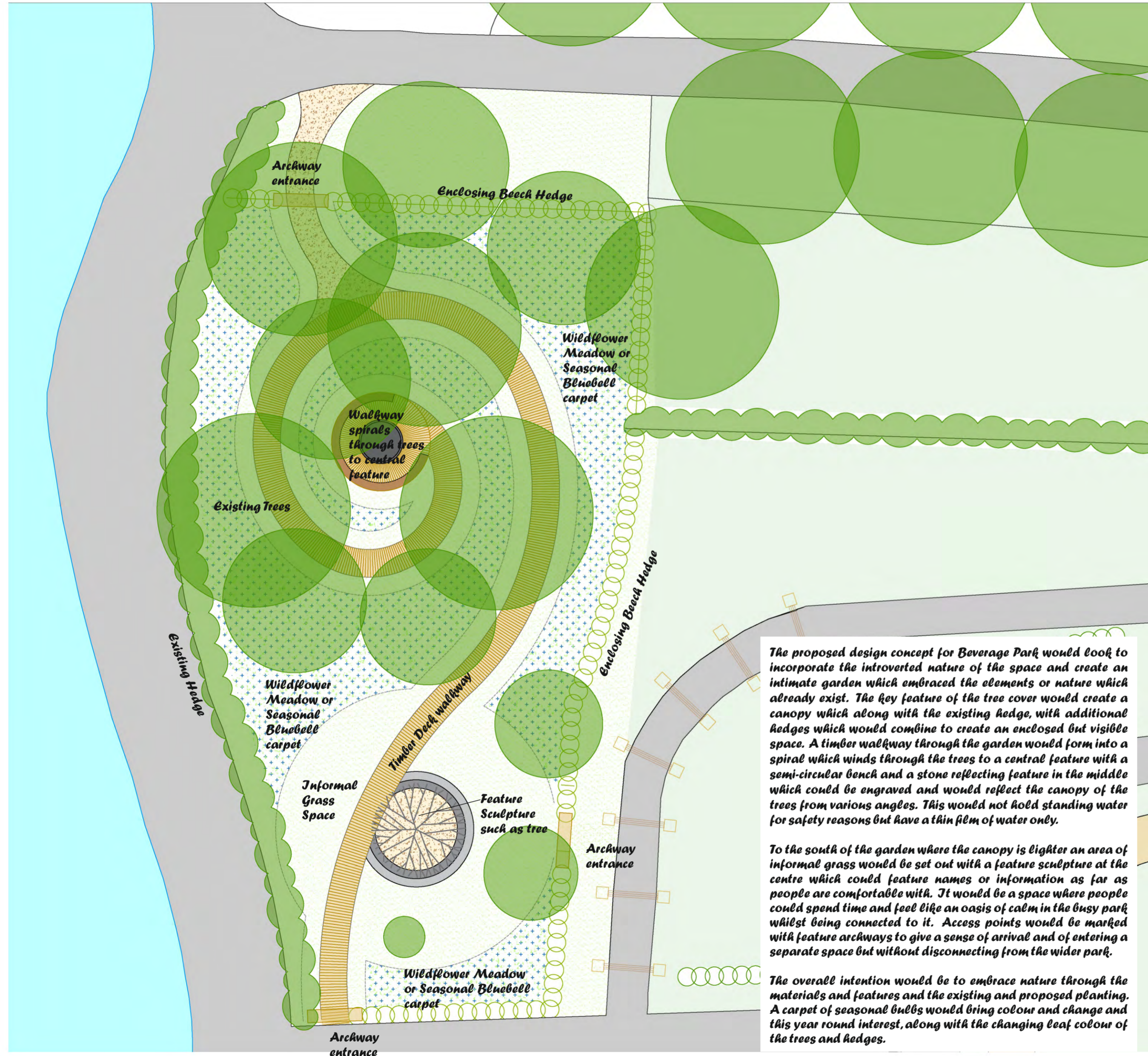


Alternative sites

Three additional sites have been identified as being potentially suitable for the memorial garden. These have not been taken forward with design concepts at this stage as there is not sufficient time to develop these in detail. There are however elements of the design concepts which could be transposed onto the other sites. The second site at Beverage Park shares many characteristics with the initial site although is less defined and enclosed. There is also another small memorial garden adjacent which could clash with the proposed garden with each deserving their own space and setting. Two alternative but adjacent sites at Public Park which lie to the north and are adjacent to one another. These sites are also a little less well defined beyond the surrounding paths but have favourable qualities and outlooks. They do however lack the prominent location which the chosen proposal site greatly benefits from. This site has views outwards across the town and sits on a small hill offering it a prime location for reflection and to create a landmark piece of artwork.



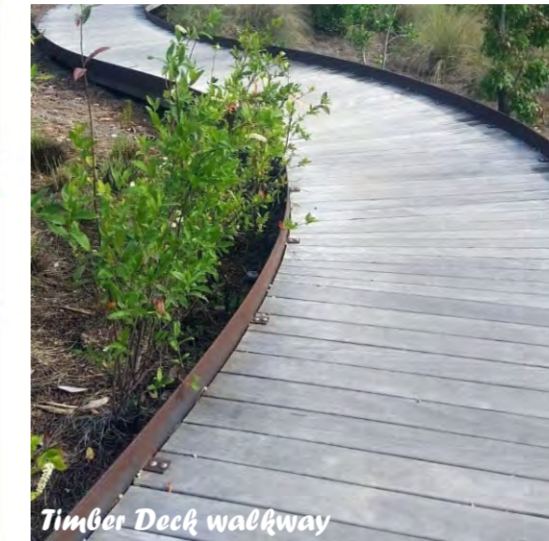
Memorial Garden - Beveridge Park



The proposed design concept for Beveridge Park would look to incorporate the introverted nature of the space and create an intimate garden which embraced the elements of nature which already exist. The key feature of the tree cover would create a canopy which along with the existing hedge, with additional hedges which would combine to create an enclosed but visible space. A timber walkway through the garden would form into a spiral which winds through the trees to a central feature with a semi-circular bench and a stone reflecting feature in the middle which could be engraved and would reflect the canopy of the trees from various angles. This would not hold standing water for safety reasons but have a thin film of water only.

To the south of the garden where the canopy is lighter an area of informal grass would be set out with a feature sculpture at the centre which could feature names or information as far as people are comfortable with. It would be a space where people could spend time and feel like an oasis of calm in the busy park whilst being connected to it. Access points would be marked with feature archways to give a sense of arrival and of entering a separate space but without disconnecting from the wider park.

The overall intention would be to embrace nature through the materials and features and the existing and proposed planting. A carpet of seasonal bulbs would bring colour and change and this year round interest, along with the changing leaf colour of the trees and hedges.



Timber Deck walkway



Wildflower Meadow or Seasonal Bluebell carpet



Metal Tree sculpture



Stone reflecting feature



Archway entrance



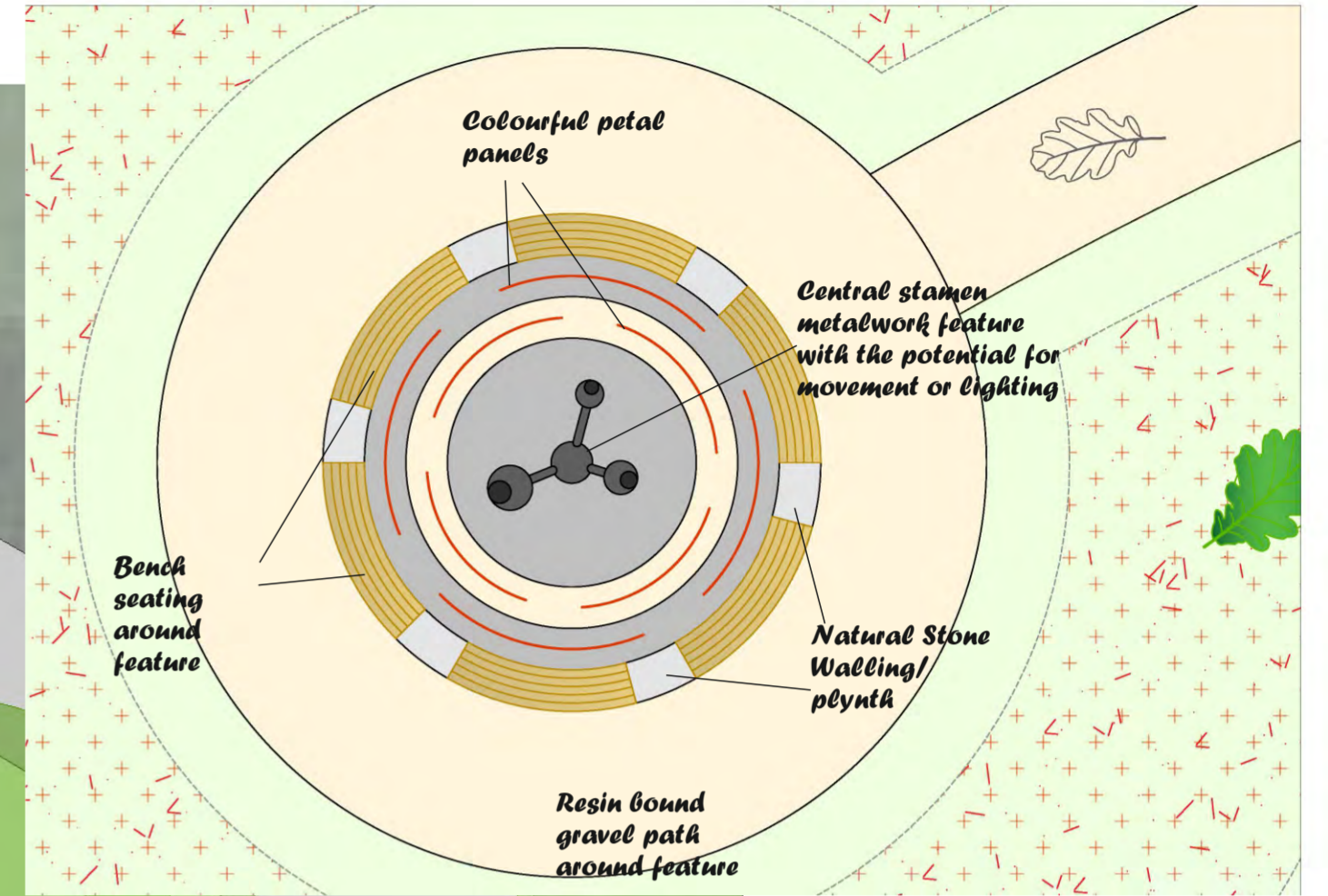
Memorial Garden - Public Park

In contrast to Beverage Park the design concept of the Public Park garden would be a more prominent and outward looking feature. Using the topography of the knoll it would create a landmark viewpoint point that would be a visible feature in the park and have a visual relationship with other features such as the Band Stand. It would seek to capitalise on the views out from the park to the south and west across the town and provide an opportunity for visitors to visit and spend some time sitting.

The overall concept would be to show a transition from autumn leaves from the tree lined paths using an oak leaf motif in the path and through features in the grass adjacent which gradually transitions into colour and spring flowers which would line the path towards the landmark feature. The feature itself would be a metal sculpture in the form of an opening flower with colourful petals emerging from the ground. These would be designed in such a way as to be robust and allow visibility through for safety and security. With a central metal stamen feature which could have a dynamic element such as wind movement or lighting.

The circular flower sculpture would, sit on a natural stone plinth with bench seating around the perimeter. This stone could be engraved with a message, poem or personalised information of desired.

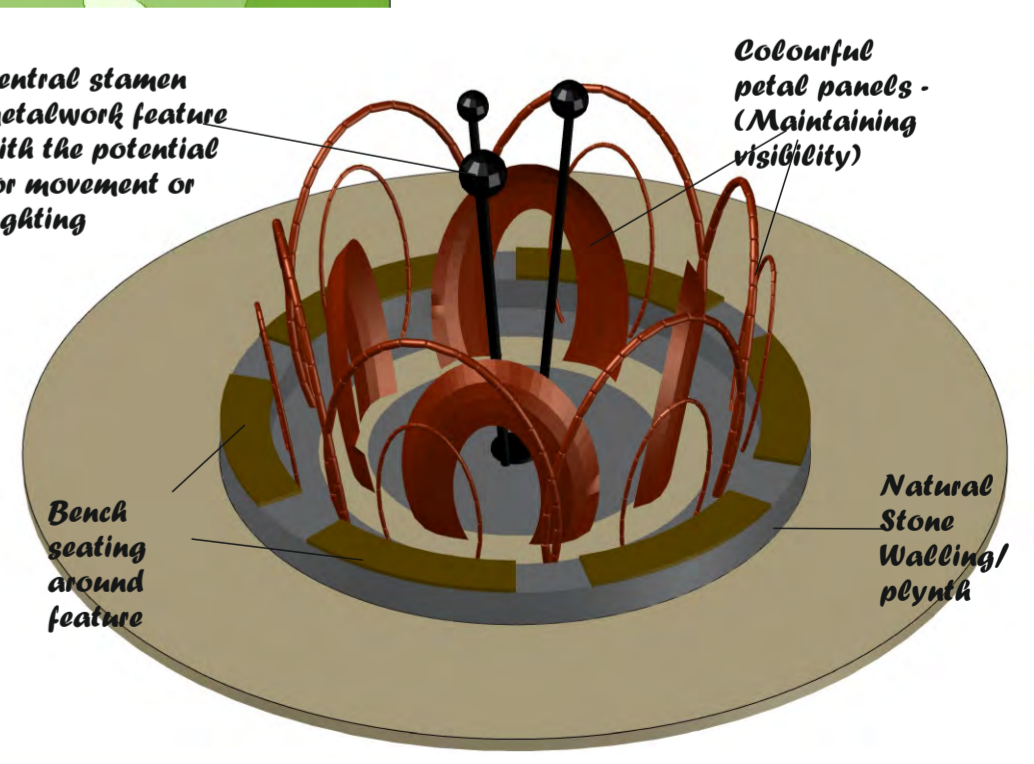
Feature Landmark viewpoint sculpture representing an opening flower with seating and natural stone paving featuring engraving



Accessible connection to existing paths

Central stamen metalwork feature with the potential for movement or lighting

Colourful petal panels - (Maintaining visibility)



Fife Babies Ashes Memorial – Written Statement

The following statement and visualisation panels show some initial thoughts and ideas for the creation of a memorial garden or feature to commemorate the Baby Ashes tragedy which affected parents across Scotland, but in particular those across Fife. This is a particularly sensitive and painful experience for those involved and one which will engender enormous sympathy from the public at large – even if they cannot fully appreciate the distress which this has caused. There will be a range of emotional responses from parents and families who are involved and even from those tangentially associated with the events, and the challenge will therefore be to create a fitting memorial which sensitively commemorates the experience, gives comfort to those affected and addresses the varying and complex emotions which remain in the wake of the events.

There are many differing approaches which can be taken to the memorial and there is no one answer which will speak to all of the needs of those involved. The hope is that by creating a unique and dedicated space or feature, the event will be acknowledged and remembered, and give a focus for those affected going forward.

Themes and Materials

A key element of the garden design would be to create a space which is at once inclusive to all, but personal to those affected by the loss. There are a number of possibilities to create features which will give the garden its own identity and can be made specific to it, and those who it is intended for.

The proposed artwork will be a key feature of this and would form a centrepiece to the design and attempts have been made to incorporate a theme or motif which will then run through the design and tie all the aspects together. Perhaps a poem with specific meaning could also be incorporated or recurrent plant species which can also add an element of dynamism which will help to bring the space to life.

To achieve a more personal touch, there are many possibilities for how this can be achieved. This could be an explicit feature which states the names of those affected on a permanent feature or monument. This may not be the desire however, and there are other ways to create personal touches which are meaningful to the individual but less present in the public domain. Using web based QR codes and links was one option which could address this issue and could be easily incorporated into the design.

The garden may be a space where people and families are encouraged to spend time. Seating is an important element of this as people must feel comfortable in the environment they are in, to do this, as well as the provision of free space which allows the user to choose how to be in the garden. There are a range of ways in which this can be provided, with a multitude of materials and appearances which can alter the look of the garden and the way in which it is used.

The robustness of the materials and design will be important in ensuring the space looks attractive to begin with and remains so with the pressures of being in an open public space. The choice of materials for paths or features will also have an impact upon the character and feel of the garden. Whatever the materials used they must be able to withstand being in a public location and continue to look good for years to come.

The accompanying drawing panels set out our contrasting approach to designs for two of the potential locations focused upon, along with some visualisations to explain and interpret the design and ideas. 3D modelling has been used in both and additional views or animations can be provided if of benefit.

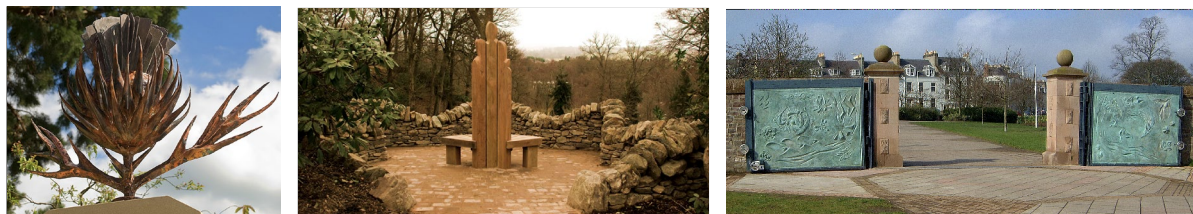
Potential Collaborators

The nature of the artwork element of the garden or memorial will depend on the site selected and the style of design adopted. The relationship of the artwork to the wider garden space will be dictated by the layout whether the artwork becomes a feature within a wider garden as with the proposed Beveridge Park design or if it becomes the main feature in its own right, as with the Public Park design.

At this stage of the process, as design concepts are being developed it was not considered an appropriate point to bring in a specific artist - who will likely have their own strong views on how to approach the commission. This would perhaps produce a divergence in approach or ideas which could cloud the clarity of the presentation. Rather than work with an outside consultant we have considered potential artists who we have worked with in

the past or who's work we admire as potential future collaborators. Contact has been made with these consultants to gauge their interest in the project – which has been very positive. Information is provided below:

David F Wilson - DWA have worked with David F Wilson on previous projects in Kirkcaldy and his work can be seen across Scotland. He specialises in artisan stonework and intricate walling arrangements as well as working in metal and engraving and sculpting in various medium. We would be pleased to work with David to bring out some of the natural elements and motifs such as the tree idea at Beveridge Park or the Leaves and Flowers at Public Park. David has expressed his interest and some examples of his work are below.



ArtFe - ArtFe specialise in blacksmithing and metalwork and have created several impressive sculptural pieces relating to Scottish wildlife, history and flora. They would potentially be a fine collaborator to develop the natural themes and potential metal work flowers for the Public Park proposal. Catherine at ArtFe has also expressed interest in the project. Examples are shown below.



Cost Consultants - At the current time there is great uncertainty in the construction industry with material and project costs escalating unpredictably. We would consider it a vital addition to collaborate with a Cost Consultant to prepare a cost plan for the project and then to prepare and oversee the tender process. Greater cost control will help to get the best out of the project and help to manage the process at this unusually volatile time. We work regularly with Robert C Brown Partnerships on a range of projects, and we would propose to bring them in to the design process, if successful.

Outline Costs

As stated, the cost of all projects is a very unpredictable at this current time and the conceptual nature of the proposals mean that any estimates must be heavily caveated. Below are some estimated costs to the various elements of the projects which give some structure to the likely requirements. Ultimately the detail of design, scale of the projects and choice of materials will have a massive impact of project costs and “cloth” will have to be cut to suit the available funds. It is for this reason that allowances for a cost consultant have been made and a large contingency fund been incorporated. The project budget is set at £150,000 and the cost plans included in the appendix remain within this. The Beverage Park proposal seems to fall more comfortably within budget.

Potential Timescales

Similarly, any attempts to suggest a programme for the project must be caveated as many elements must come together in order to make the suggested goals. They are considered achievable however and make allowances for sufficient time for consultation, review and refinement of the design to ensure that the aspirations of the group are met. They also allow consideration of seasonal requirements for planting and opening times. A timetable of this proposed programme is included in the appendix.

We can confirm that DWA and subcontractors have the resources and wherewithal to provide the required services and outputs within this timeframe.

Appendix 1 – Cost Plans

Beveridge Park	Number	Rate	Cost
Site / Tree Survey	1.00	sum	£1,250.00
Walkway (140m2)	140.00	£250.00	£35,000.00
Arches - 3no	3.00	£1,500.00	£4,500.00
Feature Wall Seat	1.00	sum	£10,000.00
Artwork	2.00	sum	£30,000.00
Mature Hedging - 70m	70.00	£125.00	£8,750.00
Soft Landscape	1.00	Sum	£10,000.00
Total			£99,500.00
Contingencies	20.00%		£19,900.00
Consultants Fees	12.00%		£11,940.00
			£131,340.00

Public Park	Number	Rate	Cost
Site / Tree Survey	1.00	sum	£1,250.00
Path (235m2)	235.00	£150.00	£35,250.00
Feature leaves	20.00	£500.00	£10,000.00
Feature Wall	1.00	sum	£10,000.00
Artwork	1.00	sum	£50,000.00
Bench Seating	4.00	£1,500.00	£6,000.00
Season Bulb Planting	445.00	£5.00	£2,225.00
Total			£114,725.00
Contingencies	18.00%		£20,650.50
Consultants Fees	12.00%		£13,767.00
			£149,142.50

Appendix 2 – Proposed Programme

	Jun	Jul	Aug	Sept	Oct	Nov	Dec	Jan	Feb	Mar	April	May
Initial Concept Presentation	█											
Consultant and award of design commission.	█											
Assembly and briefing of Design Team		█										
Concept development with Artist		█										
Presentation of Developed Design		█	█									
Initial Cost Plan			█									
Refinement of Design			█	█								
Detailing and modelling			█	█								
Presentation				█								
Preparation of Construction Details					█	█						
Preparation of Specification					█	█						
Preparation of Tender Documents						█	█					
Issue of Tender Documents							█	█				
Return of Tender Documents, Check and Award								█				
Contractor Briefing, preparation and Pre-start									█			
Contract Period										█	█	█
Completion and opening												█