



Roads and Transportation Services
Flooding, Shoreline and Harbour Team
Bankhead Central
Bankhead Park
Glenrothes KY7 6GH



HARBOUR FACT SHEET

Web Site: www.fife.gov.uk

Email: Harbours@Fife.gov.uk

Telephone: 07930 869358

Out of Hours: 03451 55 00 99

St Monans Harbour

Harbour Office, Mid Shore, St Monans, KY10 2BA

Lead Harbour Master

Allan Anderson

Harbour Master

James Griffin (Part Time)

Description	The harbour has two basins and three piers. The basins are further protected by a “zig – zag” breakwater extending from near the end of the East Pier, and the breakwater also provides shelter to the narrow south facing entrance channel. The basins are also protected by a short length of offshore breakwater to the west of the entrance channel.				
Location	Northern shore of the Firth of Forth			Imray chart No	C27
Limits	The harbour limits, are outlined in the Schedule to the Fife Council Harbours Byelaws 1996, broadly extend as follows: <ul style="list-style-type: none">• Approximately 175m to the west of the East Pier Head along the shore,• 200m south of the East Pier Head,• 175m east of the east side of the East Pier.				
Approach	The harbour is open from the southeast to the south. The outer end of the east side of the entrance channel is marked by a metal post with a flashing green light on the East Breakwater. The entrance channel is narrow (about 35m at its narrowest) with rocks on both sides. The pier ends have metal posts with fixed red and green lights. Additionally, a white Iso Phase light at the rear of the West Basin aligns with the entrance channel.				
Usage	Fishing vessels. Recreational vessels.				
Latitude (Entrance)	56.204365N	Longitude (Entrance)	2.765313W	Grid Reference	352619,701571
Tidal Range	0.1 to 5.9 m (Chart Datum)	Neap Tide	2.2 m	Spring Tide	4.8 m
Navigational Access	Leading Lights/Poles	Tide Gauge	No	Berths	45 Pier side Moorings
Tugs	No	Anchorage	No	Pilotage	No
Cargo Handling	No	Repair facilities	Slipways (2 No)	ISPS Compliant	N/A
Maximum Draft	2 m	Maximum Length	24 m	Maximum Beam	8 m

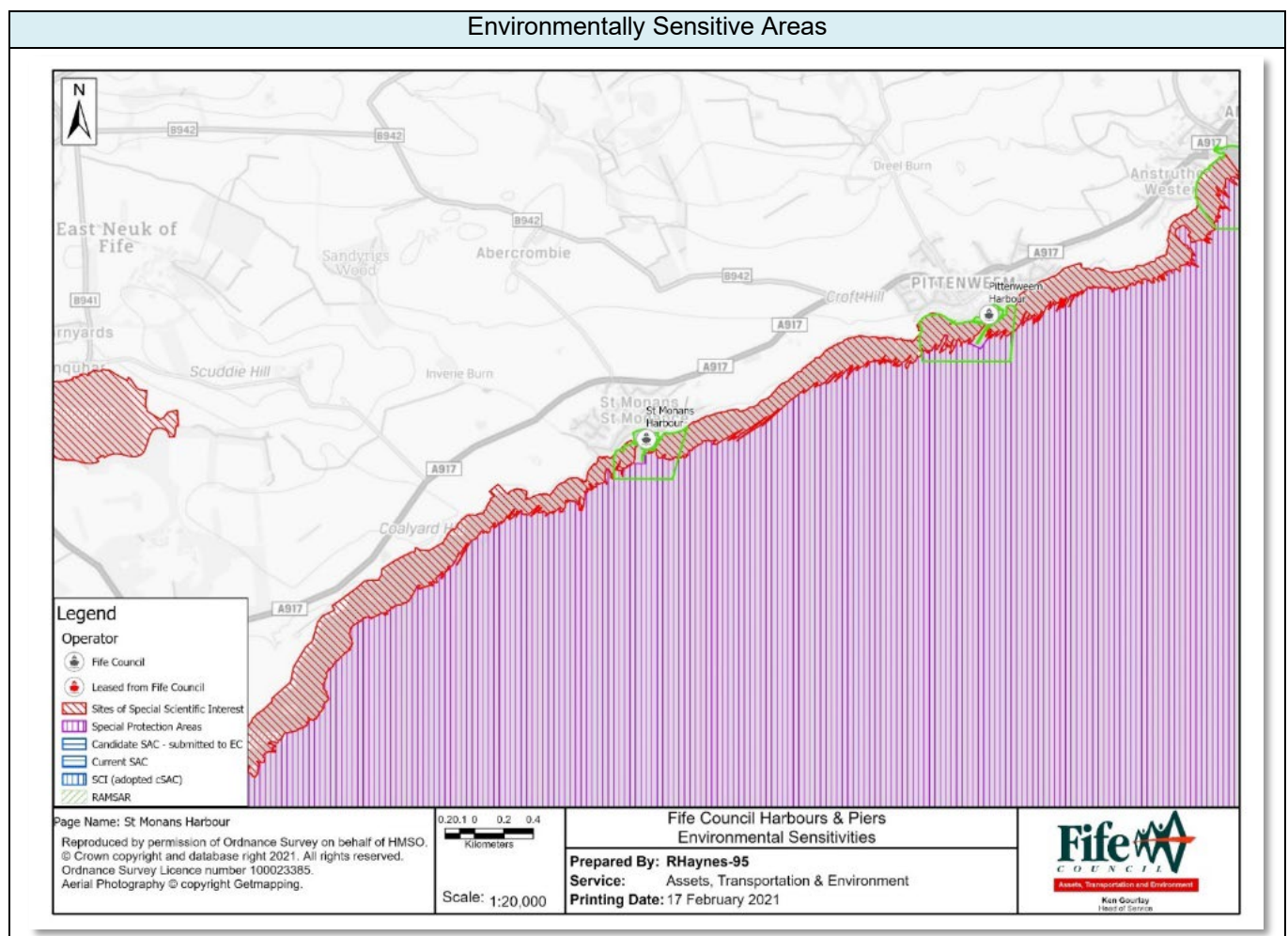
Control Depths/Drafts	Location	Bed Material	Bed Level	Keel Clearance	Note
	Entrance Channel	Sand / Silt	0.0 to 0.7 m (Chart Datum)	Min 1 m	Prone to Silting
	East Basin to Middle Pier	Sand / Silt	0.8 to 3.2 m (Chart Datum)	N/A	Prone to Silting
	West Basin	Sand / Silt	0.7 to 2.5 m (Chart Datum)	N/A	Prone to Silting

Communication	VHF	Calling and Distress/Safety	16	Harbour Operations	11
---------------	-----	-----------------------------	----	--------------------	----

Operating Constraints	In high winds or large easterly swells, the approach to the entrance channel can be very difficult. It is essential to seek the Harbour Master's advice before arrival or departure.
	The entrance channel is relatively narrow (approx. 35m at its narrowest point), with rocks along both sides.
	When visibility is severely restricted vessels should consider whether it's safe to approach / leave the harbour based on the equipment they have on their vessel and the local knowledge of the skipper.
	There is a narrow entrance (approx. 10m in width) into the west basin
	Both basins and the northern end of the entrance channel dry out at low spring tides, but all areas have a sand / silty bed
	Lying along the inside of the East Pier is not recommended in the winter or during storm conditions as it is liable to significant overtopping particularly during large easterly wave conditions
	Use of either of the slipways is with the permission of the Harbour Master, however the use of the west slipway is not recommended due to its poor condition

Aids to Navigation	2 F G (vert) 6m 4M - East Pier Head (Orange Metal Tripod)
	2 F R (vert) 6m 4M - West Pier Head (Post on Harbour Wall)
	Fl G 3s 4M - East Breakwater Head (Metal Post)
	Iso W 4s 4M - Leading Light at Rear of West Basin (Mounted on Street Light Column)
	Unlit Beacon (Metal Pole) 7m on Western Edge of Harbour Approach

Environmental Sensitivity	Special Area of Conservation (SAC), Special Site of Scientific Interest (SSSI), Special Protection Area (SPA), and a Regionally Important Geological Site (RIGS)
---------------------------	--



Oil Pollution Hazard	Responsibility	Control	
General Oil Spillage	Fife Council	Provision of signage stating the organisations to be contacted in the event of an oil spillage when the Harbour Master is not on duty – maximum response time 90 minutes	
		Competent trained operatives including accredited to MCA1 and or MCA4 Oil spill response	
		Provision and storage of Tier 1 oil pollution clean-up and containment materials	
		Equipment	Number
		3m x 13cm Spaghetti Water Boom	10
		50cm x 40cm Absorbent Pads	50
	Protective Chemical Suit	1	
	Provision for Tier 2 Specialist Contractor		
Oil Pollution Action	Contact Fife Council immediately Fife Council will implement the Oil Pollution Response Procedure to effectively manage and mitigate the impact of oil pollution incidents.		

Booming Locations

