



|  |  |                                     |
|--|--|-------------------------------------|
|  <p>Roads and Transportation Services<br/>Flooding, Shoreline and Harbour Team<br/>Bankhead Central<br/>Bankhead Park<br/>Glenrothes KY7 6GH</p>                            |    | <h1>HARBOUR<br/>FACT<br/>SHEET</h1> |
| <p><b>Web Site:</b> <a href="http://www.fife.gov.uk">www.fife.gov.uk</a></p> <p><b>Email:</b> <a href="mailto:Harbours@Fife.gov.uk">Harbours@Fife.gov.uk</a></p> <p><b>Telephone:</b> 03451 555555 Ext 460556</p> <p><b>Out of Hours:</b> 03451 55 00 99</p> | <h2>Crail Harbour</h2> <p><b>Harbour Office, Mid Shore, Pittenweem, KY10 2NL</b></p> <p><b>Lead Harbour Master</b> Allan Anderson (part-time)</p> <p><b>Harbour Master</b> N/A</p> |                                     |

|                     |  |                      |           |                |               |
|---------------------|--|----------------------|-----------|----------------|---------------|
| Description         | The harbour consists of a single basin and two piers.  |                      |           |                |               |
| Location            | Northern shore of the Firth of Forth   |                      |           | Imray chart No | C27           |
| Limits              | The harbour limits, are outlined in the Schedule to the Fife Council Harbours Byelaws 1996, broadly extend as follows: <ul style="list-style-type: none"><li>Approximately 250m to the south of the South Pier</li><li>100m to the east of the harbour.</li></ul>  |                      |           |                |               |
| Approach            | The harbour is constrained from the east-southeast to the southeast. The entrance is shallow, especially at low tide, with shoals to the west and north. Rocks are present around the southern side of the south pier and along the western side of the bay. There are no navigation marks on the piers, but white leading beacons on the coastal slope west of the harbour provide a 295° transit with fixed red lights at night. |                      |           |                |               |
| Usage               | Fishing vessels. Recreational vessels  |                      |           |                |               |
| Latitude (Entrance) | 56.257383N   | Longitude (Entrance) | 2.628072W | Grid Reference | 361187,707386 |
| Tidal Range         | 0.1 to 5.9 m (Chart Datum)   | Neap Tide            | 2.2 m     | Spring Tide    | 4.5 m         |
| Navigational Access | Leading Lights/Poles   | Tide Gauge           | No        | Berths         | 25 Pier side  |
| Tugs                | No   | Anchorage            | No        | Pilotage       | No            |
| Cargo Handling      | No   | Repair facilities    | No        | ISPS Compliant | N/A           |
| Maximum Draft       | 2 m  | Maximum Length       | 11 m      | Maximum Beam   | 6 m           |

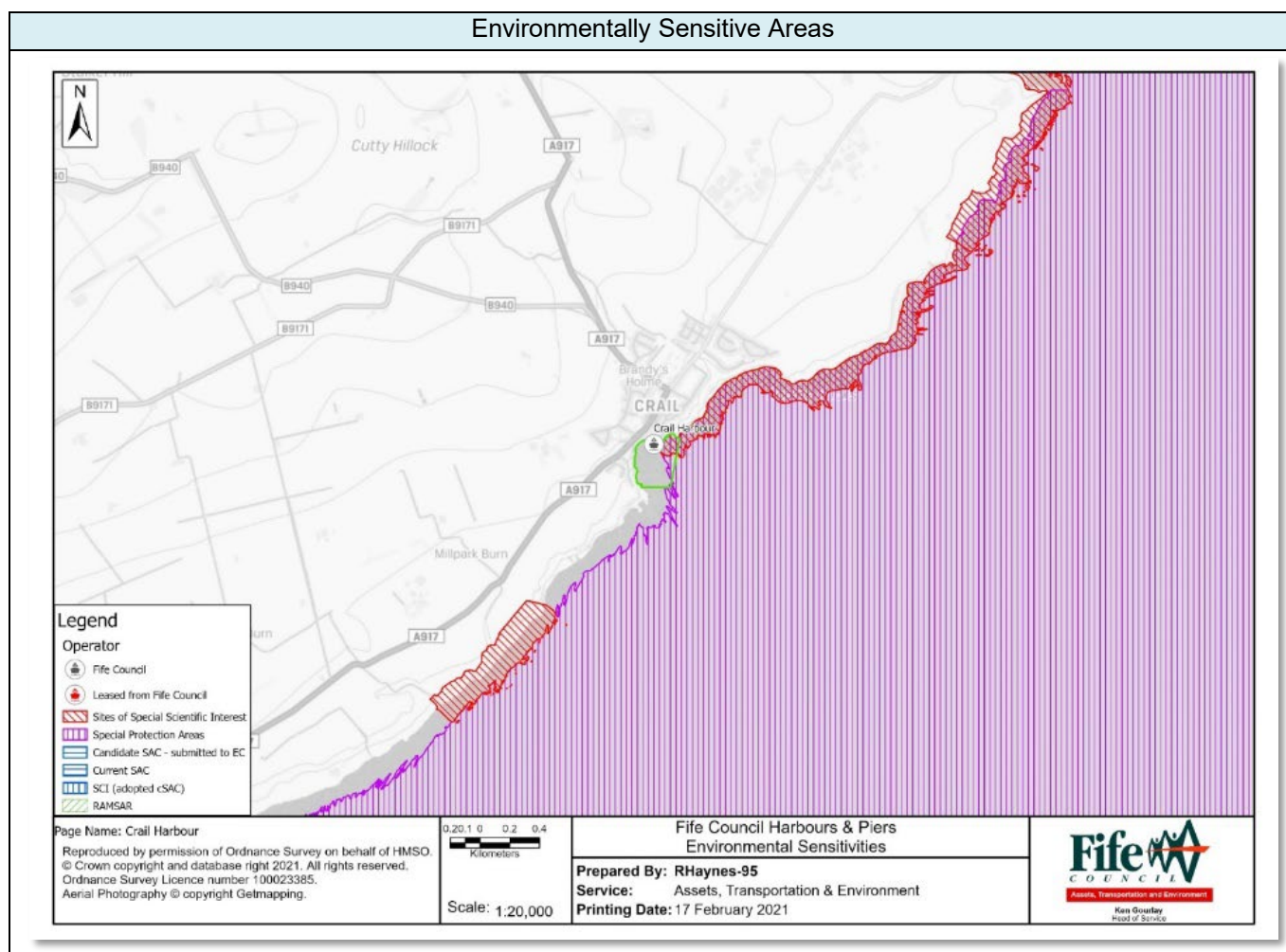
| Control Depths/Drafts | Location         | Bed Material | Bed Level                  | Keel Clearance | Note   |
|-----------------------|------------------|--------------|----------------------------|----------------|--|
|                       | Entrance Channel | Stone Sill   | 1.6 m (Chart Datum)        | Min 1 m        | Controls Tidal access  |
|                       | Basin            | Sand / Silt  | 1.6 to 2.0 m (Chart Datum) | N/A            | Harbour bed varies due to sand from adjacent beach during storms etc |

|               |     |                             |    |                    |    |
|---------------|-----|-----------------------------|----|--------------------|----|
| Communication | VHF | Calling and Distress/Safety | 16 | Harbour Operations | 11 |
|---------------|-----|-----------------------------|----|--------------------|----|

|                       |   |
|-----------------------|---|
| Operating Constraints | In high winds and / or large easterly swells the approach to the entrance channel can be very difficult and the Harbour Masters advice must be sought prior to arrival or departure   |
|                       | In restricted visibility the Harbour Master will determine whether vessels can safely leave or enter  |
|                       | The approach to the harbour entrance is relatively shallow, particularly around low water, and the seabed shoals to the west and north onto the beach. There are also rocks around the southern side of the south pier, as well as rocks along the western side of the bay in which the harbour sits. |
|                       | The entrance into the harbour is around 40m in width, but the entrance into the west basin is much narrower at around 11m in width  |
|                       | The basin dries out completely at low spring tides right up to and beyond the harbour mouth, but the basin has a sandy / silty bed  |

|                    |   |
|--------------------|---|
| Aids to Navigation | F R 24m 6M - Front Leading Light (White Stone Beacon) (Leading Line 295°) |
|                    | F R 30m 6M - Rear Leading Light (White Stone Beacon) (Leading Line 295°)  |

|                           |  |
|---------------------------|--|
| Environmental Sensitivity | Special Area of Conservation (SAC), Special Site of Scientific Interest (SSSI), Special Protection Area (SPA), and a Regionally Important Geological Site (RIGS) |
|---------------------------|--|



| Oil Pollution Hazard | Responsibility   | Control  |        |
|----------------------|--|--|--------|
| General Oil Spillage | Fife Council   | Provision of signage stating the organisations to be contacted in the event of an oil spillage when the Harbour Master is not on duty – maximum response time 90 minutes |        |
|                      |  | Competent trained operatives including accredited to MCA1 and or MCA4 Oil spill response   |        |
|                      |  | Provision and storage of Tier 1 oil pollution clean-up and containment materials   |        |
|                      |  | Equipment  | Number |
|                      |  | 3m x 13cm Spaghetti Water Boom   | 6      |
|                      |  | 50cm x 40cm Absorbent Pads   | 20     |
|                      |  | Protective Chemical Suit   | 1      |
|                      |  | Provision for Tier 2 Specialist Contractor   |        |
| Oil Pollution Action | Contact Fife Council immediately<br>Fife Council will implement the Oil Pollution Response Procedure to effectively manage and mitigate the impact of oil pollution incidents. |  |        |

### Booming Locations

