



FIFE HOUSING
PARTNERSHIP

LOCAL HOUSING STRATEGY

2022-2027

ANNUAL UPDATE 2025

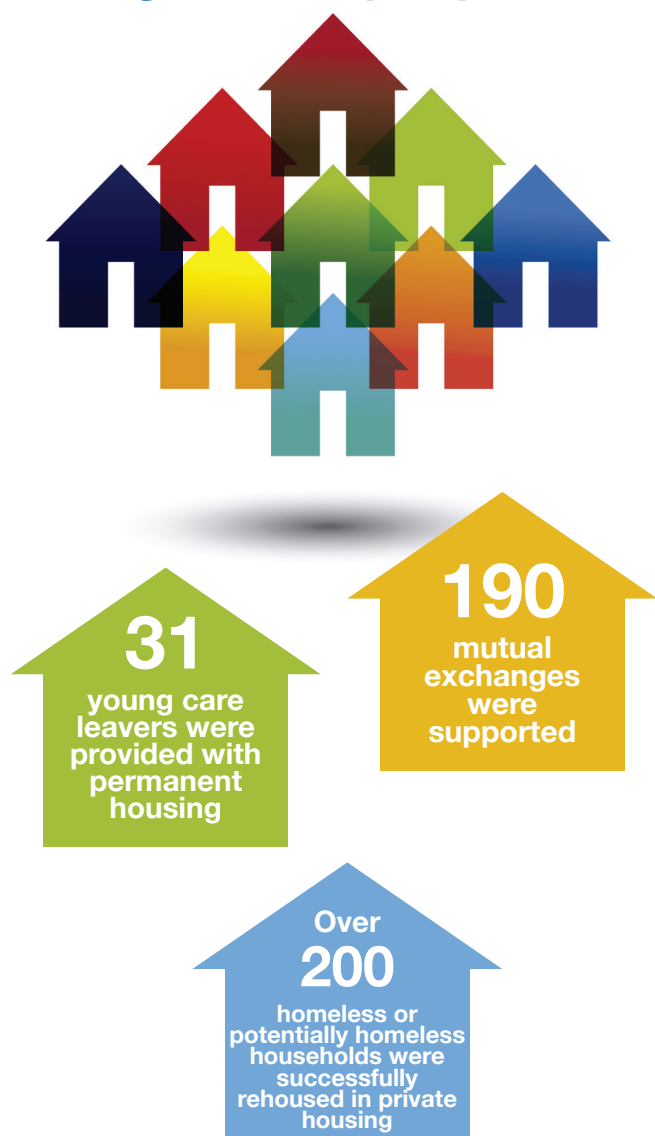


The Local Housing Strategy (LHS) 2022-2027 provides a five-year plan for improvement, addressing the housing issues that most affect people and communities. The aim of the LHS is to 'provide housing choices for people in Fife' through the delivery of the following LHS priority areas:

- **Ending Homelessness**
- **More Homes in the Right Places**
- **A Suitable Home**
- **A Quality Home**
- **A Warm Low Carbon Home**

This LHS Annual Update outlines our progress providing a positive contribution for people and properties in Fife during 2024-2025. Our achievements include:

Progress for people



- Over 1,250 customers accessed housing information and advice
- 75% of clients were prevented from statutory homelessness through receiving housing options advice
- The number of live homeless cases reduced to 1,678. A 260 reduction on the previous year
- The number of children residing in temporary accommodation reduced from 387 to 342
- The use of B&B type temporary accommodation reduced from 23% to 15%
- Over 100 Housing First tenancies are in place providing support to those with complex needs
- Over 310 adaptations were completed in private homes, creating independence for households in the private sector
- 193 technology enabled care solutions were installed in Fife Council properties to support independent living
- Over 8,000 households accessed local and national fuel poverty advice and support schemes
- 1,449 households received home energy saving items from 'handy' services
- 256 people received in-depth advice to help maximise household income
- Residents in Fife received over £1,408,000 worth of fuel poverty interventions

Progress affecting properties

- 417 new affordable homes were provided, including 377 new builds and 40 property purchases
- 100% of new build affordable homes provided achieved Energy Performance Certificate (EPC) rating A or B
- Almost 32% of new build affordable homes were delivered for people with specific needs
- An empty homes strategy was developed to further support bringing empty homes back into use
- Improvement actions were introduced to help tackle damp and mould in private sector homes
- 2,419 properties are signed up to our Fife Council Factoring Service
- The average time taken to approve licences for Houses in Multiple Occupation reduced to 6 months
- Almost 1,600 applications were determined for Short-term Lets in Fife
- A detailed delivery plan was developed and approved for Fife's Local Heat and Energy Efficiency Strategy (LHEES) to help decarbonise heat and improve energy efficiency
- Demonstrator homes at the H100 Fife project are live and showcasing the switch from natural gas to hydrogen. A world-first green hydrogen network in Fife



33

new build affordable homes were delivered specifically for older people

66

long-term empty homes in the private sector were returned to housing use

17

chalets were installed on Gypsy/ Traveller sites in Fife as part of site improvements

Consultation

Throughout 2024/25 a range of consultations have taken place to help ensure LHS actions remain relevant for achieving outcomes. Some of these have included:

All LHS priorities – Housing Emergency Summit - various housing stakeholders attended this event to hear about the housing challenges experienced at a local and national level. Delegates were provided with an opportunity to make pledges and suggestions on how to respond to the housing emergency. The feedback received has helped inform Fife's response to the Housing Emergency.

Ending Homelessness – Allocations Policy Conference – tenants, Fife Housing Register Partners and elected members all participated in discussions around housing priority groups to help inform a review of the current housing allocations policy in Fife. Tenancy conditions, exit and relet standards were also discussed through the conference.

A Warm Low Carbon Home – Fife College Refreshers Festival – a housing stand at the event offered students and staff the opportunity to speak face-to-face with housing and cost-of-living support organisations. Information relating to all housing tenures, tenants' rights, energy efficiency and free products that help keep homes warm were provided, whilst housing providers gained insight to student housing needs.

Priorities for 2025/2026

During 2025/26 housing partners will continue to develop actions to deliver the LHS outcomes, these will include:



Delivering
over **280**
new affordable
homes

People:

- Reducing the number of children residing in temporary accommodation from 342 to 200
- Lowering repeat homelessness from 4% to 1%
- Reducing the average days spent in temporary accommodation from 134 days to 120 days
- Developing a temporary and supported accommodation strategy to further reduce the use of B&B type accommodation and eradicate unsuitable accommodation order breaches
- Rehousing over 330 homeless and potentially homeless households in the private sector
- Increasing the number of mutual exchanges from 190 to 250 with help from the online mutual exchange scheme
- Installing over 250 Technology Enabled Care solutions in Fife Council and partner Housing Association properties
- Increasing the number of adaptations delivered across social and private housing to continue promoting independent living
- Delivering over 7,000 energy advice sessions for households to help reduce fuel poverty
- Providing 1,500 'handy services' energy saving measures to households in Fife
- Utilising environmental sensors in tenancies to help identify fuel poverty



Reducing the
number of
live homeless
cases from
1,678 to 1,250
households

Properties:

- Increasing the target for the percentage of wheelchair new build affordable homes delivered from 5% to 6.5%
- Delivering over 30 new build affordable homes specifically for older people
- Investigating the potential to access national funding for affordable housing in rural areas
- Developing an affordable housing supply programme for the period 2026-29
- Reducing the average number of days Fife Council and partner Housing Associations take to relet properties
- Continuing improvements to Gypsy/ Traveller sites by increasing the number of chalets installed from 17 to 34
- Returning a minimum of 70 long-term empty homes back into housing use
- Implementing a missing share pilot and rolling enforcement fund to improve the condition of private housing and council owned estates
- Improving the average environmental impact rating of housing across all tenures
- Developing a 10-year programme for the delivery of net zero in social housing stock
- Providing energy efficiency improvements to over 200 homes through Areas-Based Schemes
- Monitoring the use of hydrogen in the trial homes participating in the H100 Fife project



The LHS 2022-2027 and supplementary documents can be accessed direct through the following link: www.fife.gov.uk/kb/docs/articles/housing/local-housing-strategy

Alternatively, for more information around the Fife Housing Partnership and Local Housing Strategy, please contact: lhs.enquiries@fife.gov.uk