



# HARBOUR FACT SHEET

**Web Site:** [www.fife.gov.uk](http://www.fife.gov.uk)

**Email:** [Harbours@Fife.gov.uk](mailto:Harbours@Fife.gov.uk)

**Telephone:** 03451 555555 Ext 460556

**Out of Hours:** 03451 55 00 99

## Pittenweem Harbour

**Harbour Office, Mid Shore, Pittenweem, KY10 2NL**

**Lead Harbour Master**

Allan Anderson

**Harbour Masters**

Elaine Black

Steven Middleton

Description	The harbour has two basins and three piers, protected by a breakwater extending from the original east pier. This breakwater also shelters the narrow south-facing entrance channel. The East Basin is not used due to wave exposure, while the West Basin accommodates the commercial fishing fleet.				
Location	Northern shore of the Firth of Forth			Imray chart No	C27
Limits	The harbour limits, are outlined in the Schedule to the Fife Council Harbours Byelaws 1996, broadly extend as follows: <ul style="list-style-type: none"><li>Approximately 120 meters south of the breakwater head,</li><li>Around 220 meters east of the breakwater,</li><li>And about 360 meters west of the breakwater.</li></ul>				
Approach	The harbour is open from the southeast to the southwest. It is covered by the green sector light on the east breakwater. The outer end of the entrance channel is marked by a black pole with a flashing red light. Within the channel, white marker posts on the western side and green lights on the east breakwater mark the boundaries. Additionally, white/orange striped leading poles on the Middle Pier and the west basin provide a 037° transit with fixed red lights at night.				
Usage	Fishing vessels. Recreational or Commercial vessels are not permitted without prior permission.				
Latitude (Entrance)	56.212058N	Longitude (Entrance)	2.727788W	Grid Reference	354956,702402
Tidal Range	0.1 to 5.9 m (Chart Datum)	Neap Tide	2.2 m	Spring Tide	4.8 m
Navigational Access	Leading Lights/Poles	Tide Gauge	Western Basin	Berths	45 Pier side
Tugs	No	Anchorage	No	Pilotage	No
Cargo Handling	No	Repair facilities	Blocks Area	ISPS Compliant	N/A
Maximum Draft	2.4 m	Maximum Length	25 m	Maximum Beam	8 m

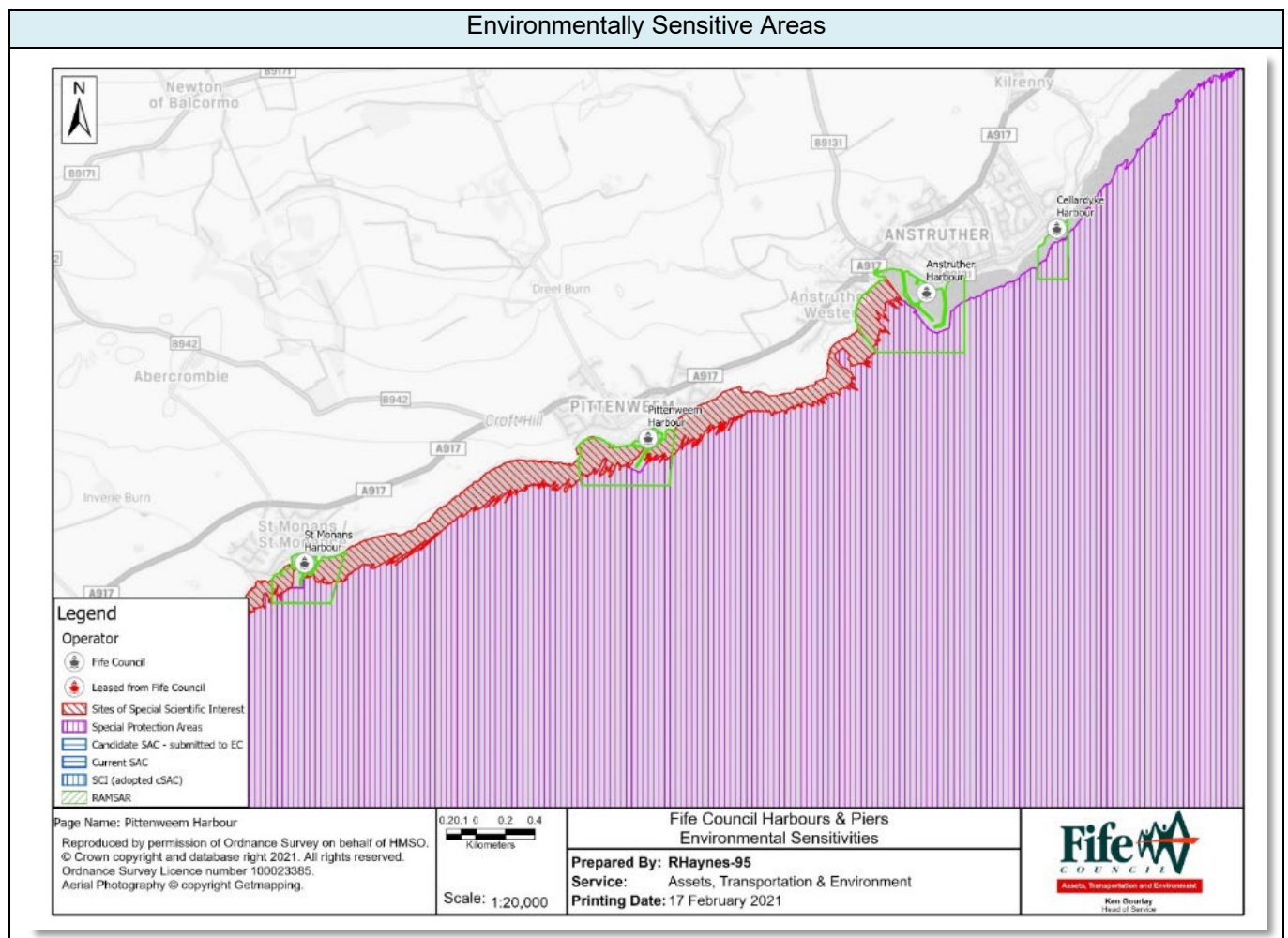
Control Depths/Drafts	Location	Bed Material	Bed Level	Keel Clearance	Note
	Entrance Channel	Sand / Silt	-1.2 to 0.4 m (Chart Datum)	Min 1 m	Prone to Silting
	East Basin	Rocks	-1.2 to 2.5 m (Chart Datum)	N/A	Restricted Mooring
	West Basin (W)	Sand / Silt Rock outcrops	-0.8 to 0.0 m (Chart Datum)	N/A	Berthing location by Harbour Master
	West Basin (E)	Sand / Silt Rock outcrops	-1.2 to 1.0 m (Chart Datum)	N/A	Berthing location Harbour Master

Communication	VHF	Calling and Distress/Safety	16	Harbour Operations	11
---------------	-----	-----------------------------	----	--------------------	----

Operating Constraints	The narrow entrance channel, flanked by the breakwater to the east and rocks to the west, can be challenging to navigate in high winds and large waves, especially during large easterly swells. Vessels should radio the Harbour Master for permission and to check wind and wave conditions before entering or leaving the harbour.
	In restricted visibility the Harbour Master will determine whether vessels can safely leave or enter
	The entrance channel is relatively narrow (approx. 20m at its narrowest point), with rocks along the east side marked by white posts
	There is a narrow entrance (approx. 9m in width) into the west basin, and this necessitates a tight turn from the entrance channel with restricted space for manoeuvring
	The east basin dries at low spring tides right up to a point near the end of the Middle Pier, and it has a rocky bed
	Parts of the west basin dry at low spring tides and therefore the advice of the Harbour Master must be sought regarding suitability of berths
	The quayside along the front of the Fish market and Granary Building are reserved for boats landing their catch or loading supplies, and any berthing here requires the permission of the Harbour Master

Aids to Navigation	FI (2) RG 5s 9m 9M - East Pier Head (White Metal Beacon)
	FI R 4s 3m 2M - Beacon Pole Marking Entrance Channel (Black Pole)
	F R 4m 5M - Front Leading Light (White / Orange Striped Pole) (Leading Line 037°)
	F R 8m 5M - Rear Leading Light (White / Orange Striped Pole) (Leading Line 037°)
	3no. White Poles Marking Rocks Along West Edge of Entrance Channel
	3no. Green Lights Along West Side of Breakwater Marking Eastern Edge of Entrance Channel

Environmental Sensitivity	Special Area of Conservation (SAC), Special Site of Scientific Interest (SSSI), Special Protection Area (SPA), and a Regionally Important Geological Site (RIGS)
---------------------------	------------------------------------------------------------------------------------------------------------------------------------------------------------------



Oil Pollution Hazard	Responsibility	Control	
Fuel Tank The West Pier bunkering facility has a tank capacity of 38,000 litres of diesel oil.	Pittenweem Fishermen's Mutual Association	Procedures on safe operation and emergencies	
		Maintenance contract arrangement	
		Competent trained operatives including accredited MCA1 Oil spill response	
		Provision and storage of Tier 1 oil pollution clean-up and containment materials	
General Oil Spillage	Fife Council	Provision of signage stating the organisations to be contacted in the event of an oil spillage when the Harbour Master is not on duty – maximum response time 90 minutes	
		Competent trained operatives including accredited to MCA1 and or MCA4 Oil spill response	
		Provision and storage of Tier 1 oil pollution clean-up and containment materials	
		Equipment	Number
		3m x 13cm Spaghetti Water Boom	15
		50cm x 40cm Absorbent Pads	200
		Protective Chemical Suit	2
Provision for Tier 2 Specialist Contractor			
Oil Pollution Action	Contact Fife Council immediately Fife Council will implement the Oil Pollution Response Procedure to effectively manage and mitigate the impact of oil pollution incidents.		

#### Booming Locations

