

N. Kirkcaldy

A total of 6 settlement-scale green and blue networks have been identified in Kirkcaldy:

KIRGN01: Kirkcaldy Coast Green and Blue network

KIRGN02: Raith to Seafield Green and Blue network

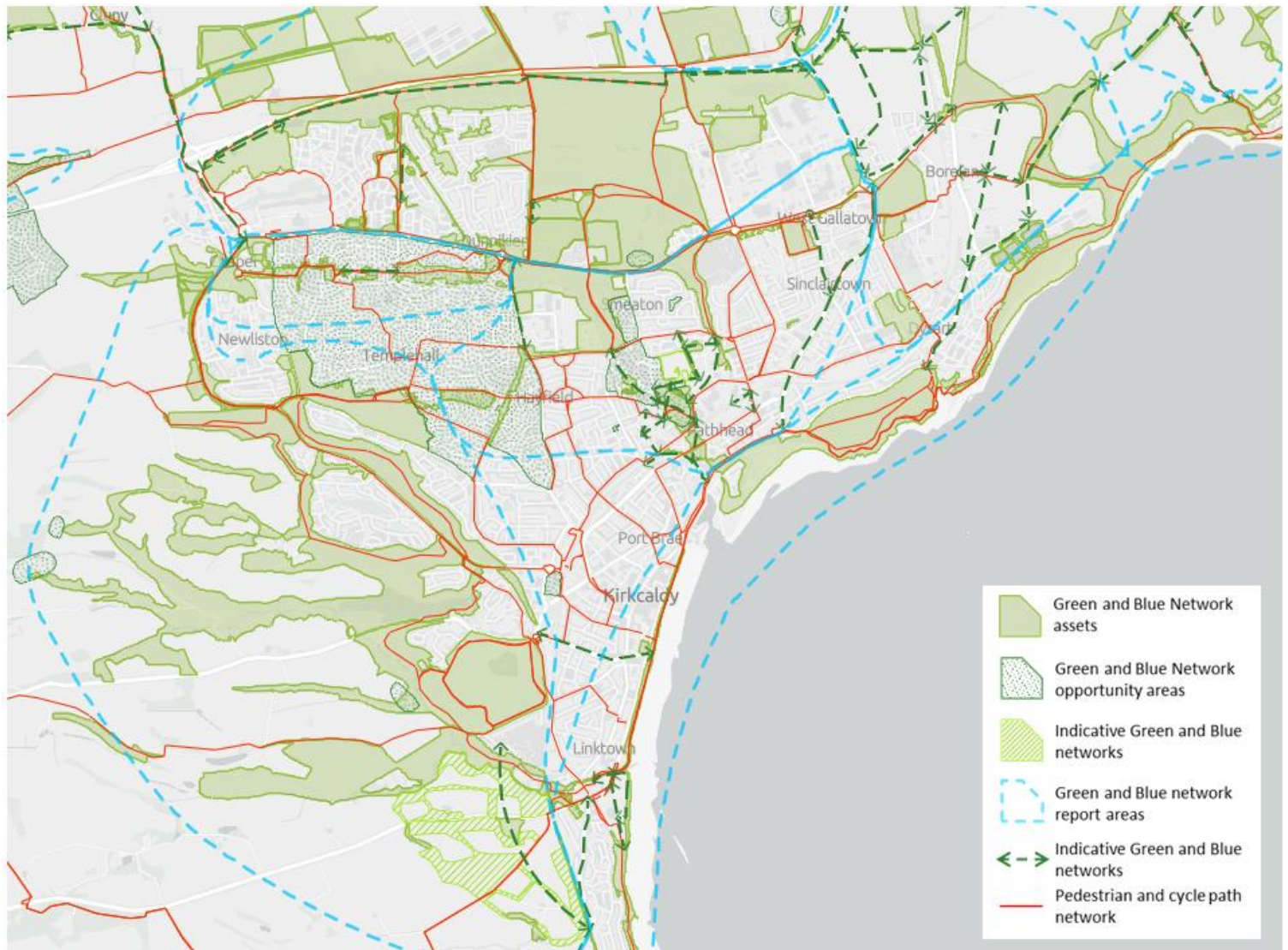
KIRGN03: Dunnikier and Northern Edge Green and Blue network

KIRGN04: Kirkcaldy Dens Green and Blue network

KIRGN05: Kirkcaldy East Strategic Development Area Green and Blue network

KIRGN06: Chapel to the Dens Green and Blue network

A short description summarising their key features, functions and opportunities is provided on the following pages.



Green and blue networks in Kirkcaldy. © Crown copyright and database rights 2024. Ordnance Survey 100023385.

KIRGN01: Kirkcaldy Coast Green and Blue network

The Kirkcaldy Coast Green and Blue Network stretches from Seafield in the west, along the esplanade to Pathhead Sands in the east, and forms a key element within the strategically important Fife Coastal Route.

Key Features:

- Part of the strategically significant Fife Coastal Path route; some connectivity issues in the harbour area where the route is 'on-street'. Connects to active travel routes in nearby green and blue networks via 'on-street' networks.
- Key assets include: the coastal greenspaces at Seafield and Pathhead Sands, the esplanade and beaches, and Ravenscraig Public Park, which connects to the Dysart Coast. Quality is variable and most would benefit from investment. Facilities at Pathhead Sands and Seafield were upgraded a few years ago which included reinstating eroded dunes at Pathhead Sands.
- Esplanade is protected by a raised and upgraded sea wall. Works are underway to improve the quality of the public realm along the Esplanade.
- The Dynamic Coast mapping identifies many areas of predicted coastal erosion along this part of the coast, in particular at Inveriel and Seafield, Pathhead Sands and Dysart. A coastal protection scheme is in place for Dysart but from Dysart to West Wemyss there is a policy of managed realignment.
- Some coastal erosion issues in Inveriel, and localised flooding of the Tiel Burn in the Starks Park area – partly due to coastal influence and partly the area's lower topography.
- Pathhead sands is prone to flooding and there are problems with erosion – located on reclaimed land, so potential contamination issues to be aware of.
- Intertidal zone is of significant habitat value (SPA, RAMSAR, SSSI designations), but current habitat quality is likely to be variable. There are areas of neutral grassland along the coast at Seafield, by the flour mill and below the Frances Colliery minewater settlement ponds; and woodland at Ravenscraig Park and Chapel Wood which both contain areas of ancient woodland.
- Important to landscape setting, but contribution and quality is currently variable.

Opportunities for Enhancement:

- Investment required to further enhance greenspace quality including Pathhead Sands, Seafield, and Ravenscraig Public Park
- Investment required to improve the quality of the public realm along the esplanade, at Inveriel waterfront and in the harbour area. Some works have been carried out along the Esplanade and more public realm works are proposed.
- Look at potential to enhance and strengthen the 'on-street' connections to Kirkcaldy town centre, to the Kirkcaldy Dens Green and blue network (4) and to the Raith to Seafield Green and blue network (2)
- Likely to be good habitat enhancement potential along the coastal strip and of the intertidal habitat – would require more detailed scoping. The CSGN Habitat Networks and Opportunity Areas mapping has identified a secondary opportunity area for grassland enhancement to improve habitat connectivity to the south east of the houses at Seafield.
- Integrate high quality active travel routes to establish key missing connections through the Inveriel area to provide better connectivity with Seafield.

Development Plan Priorities:

- Protect existing green and blue network assets.

- The green and blue network priorities below relate to proposals in Fifeplan (2017) these will be reviewed at the Proposed Plan stage of Fife's LDP2.
- 1. LDP proposal KDY 038 (Former Bus Painters Garage) – priorities in developing this area should be to:
 - Provide high quality development and landscaped edge towards the Invertiel Burn incorporating access and biodiversity improvements.
- 2. LDP proposal KDY 039 (Invertiel) – priorities in developing this area should be to:
 - Provide high quality development and landscape edge to the coast incorporating access and biodiversity improvements.
 - Provide high quality development edge to the core path along Rope Walk.

KIRGN02: Raith to Seafield Green and blue network

A significant high quality green and blue network 'hub' spanning the west of Kirkcaldy, covering the extensively wooded landscape of Raith Estate and stretching south towards the coast at Seafield. The Raith to Seafield Green and blue network includes the Kirkcaldy South West Strategic Development Area, (LDP proposal KDY 033) which is a strategically important area for the establishment of a green and blue network as a key mechanism in helping to integrate the development of with its wider setting and adjacent communities.

Key Features:

- Existing high quality landscape with a high scenic value, key views to the south, and a number of high quality assets. Makes a significant positive contribution to landscape setting and is a designated Local Landscape Area.
- Strong active travel network, with some wider countryside key links still to be delivered.
- Quality greenspace assets include Beveridge Park, and the woodland network of & surrounding Raith Estate (some of which is private estate land).
- Raith Lake and the Tiel Burn provide important flooding & drainage functions, as do the area's large greenspace assets. Along Oriel Road (A910) there are some ditches and culverted sections, which can cause local flooding issues.
- Significant habitat value, with key assets including the ancient woodland network of and surrounding Raith Estate and the riparian habitat along the watercourses.
- Includes the area of the proposed Kirkcaldy South West Strategic Development Area (LDP proposal KDY 033).

Opportunities for Enhancement:

- Enhance and strengthen connectivity to Invertiel and the Kirkcaldy Coast Green and blue network (KIRGN01).
- Likely potential for woodland management to enhance habitat quality. The CSGN Habitat Networks and Opportunity Areas mapping has identified two primary opportunity areas for woodland enhancement east of Target Wood and a secondary opportunity area west of the Public Park Plantation to improve habitat connectivity.
- Aspiration for future core path connections to Auchtertool (as identified in the core path plan) and to Cardenden south of The Glens.
- Planning permission has been granted for a small affordable housing development on the greenspace south of The Glens, this development proposes enhancement of the remaining greenspace including community woodland and gardens.
- SEPA have identified water body restoration opportunities along the Dronachy Burn within this green and blue network.
- Long-term aspiration to upgrade the existing cycleway connecting Kinghorn to Kirkcaldy to develop an off-road route.
- The Templehall Neighbourhood Masterplan includes opportunities to improve play parks and community greenspaces, provide growing spaces, improve the walking/cycling network; and provide environmental improvements to the shopping area including more green infrastructure.
- The Fife NHS greenspace Strategy identifies opportunities for biodiversity enhancements to courtyards, rooftops, verges and lawns, and the potential to create new green corridors, pockets parks and gardens within the grounds of the Fife College of Nursing & Midwifery.

Development Plan Priorities:

- Protect existing green and blue network assets.
- The green and blue network priorities below relate to proposals in Fifeplan (2017) these will be reviewed at the Proposed Plan stage of Fife's LDP2.
- 3. LDP proposal KDY 026 (Kirkcaldy South West Strategic Development Area) – priorities in developing this area should be to:
 - The development strategy for the area needs to capitalise on the site's existing landscape assets and high quality setting.
 - Establish new high quality greenspace as an integral part of the wider green and blue network within the site, combining green space with active travel, habitat, sustainable urban drainage and landscape provision.
 - Establish high quality landscape and pedestrian and cycle links to Beveridge Park and Balwearie High School.
 - Develop a new high quality landscape edge with the Tiel Burn corridor, which incorporates active travel provision and creates new habitat provision.
 - Develop a new high quality landscape edge, which incorporates active travel provision and links to the wider countryside.

KIRGN03: Dunnikier and Northern Edge Green and blue network

An important green and blue network resource encompassing Dunnikier and spanning a significant portion of the northern edge of Kirkcaldy.

Key Features:

- Existing active travel network, which links to the Kirkcaldy Dens Green and blue network (KIRGN04) and the Chapel to the Dens Green and blue network (KIRGN06), and provides key active travel routes north to Glenrothes: the A92 represents a key barrier to connectivity north and existing crossing points are therefore significant and should be protected.
- Greenspace assets include: Dunnikier Public Park, Dunnikier Wood, and Dunnikier Golf Course (which has a number of core paths that run through it), but greenspace quality is variable.
- Provides woodland and grassland of important habitat value, with good connectivity to habitat assets in the Kirkcaldy Dens Green and blue network (KIRGN04).
- There have been works at Dunnikier Woods over the last few years to manage rhododendron and remove dangerous trees.
- Contributes to landscape setting, but potential to significantly improve.

Opportunities for Enhancement:

- Investment is required to enhance greenspace quality and multi-functionality.
- Enhance and strengthen important active travel connections to Kirkcaldy. There is an aspiration for an active travel route along the northern edge of Kirkcaldy and an active travel opportunity to create a shared use path from Kirkcaldy to Kinglassie.
- Kirkcaldy High School grounds – establish a landscape and habitat link along the edge of the playing fields, to enhance the setting and multi-functionality of the existing north-south active travel route – would require a discussion with Education Service.
- Habitat – potential for strategic connections to north and north east, along the north edge of the John Smith Business Park. The CSGN Habitat Networks and Opportunity Areas mapping has identified a primary opportunity area for woodland enhancement to improve

habitat connectivity to the south of Dunnikier Park; and a secondary opportunity area for grassland enhancement to the south west of the Redhouse Roundabout.

- Potential also to improve contribution to landscape setting along edge of settlement, particularly along the edge of the settlement where it bounds the A92.
- Deliver multi-use off-road connection to Cardenden.

Development Plan Priorities:

- Protect existing green and blue network assets
 - The green and blue network priorities below relate to proposals in Fifeplan (2017) these will be reviewed at the Proposed Plan stage of Fife's LDP2.
1. LDP proposal LWD 002 (Begg Farm) – priorities in developing this area should be to:
 - Enhancement of the core path to the east of the site.
 - Consider the contribution to landscape setting and the potential for biodiversity enhancements.

KIRGN04: Kirkcaldy Dens Green and blue network

A finer grain green and blue network consisting of two branches through Middle Den and East Den, which converge at Denfield and provide significant north-south connectivity.

Key Features:

- Existing active travel network, albeit with key missing links around Victoria Hospital and Smeaton. Connects to the Dunnikier and Northern Edge Green and blue network (KIRGN03), which includes Kirkcaldy High School, and to the Chapel to the Dens Green and blue network (KIRGN06).
- Greenspace assets include: Middle Den, Pannie Den, Denfield, Gallatown Park, Kirkcaldy Cemetery, albeit greenspace quality is variable.
- Pannie Den abuts the institutional grounds of St. Maries Primary School and St. Andrews High School.
- Provides a flooding and drainage function – the Dens and networks of greenspace relate to Den Burn and East Burn, albeit the watercourses are culverted in places.
- Contributes to landscape setting, with good potential to improve.
- Provides important habitat value – with good habitat connectivity to the Dunnikier to Northern Edge Green and blue network (KIRGN03)) to the north.
- Enhance and strengthen important active travel connections to Kirkcaldy, including in the long term delivering a multi-use route along Hendry Road.

Opportunities for Enhancement:

- Investment required to enhance greenspace quality including Middle Den, Denfield, Pannie Den and Gallatown Park.
- Opportunity to establish key missing landscape and multi-use access link between Middle Den, Denfield and existing playing fields, through the Victoria Hospital Grounds.
- Opportunity to establish key missing landscape and access link between Pannie Den and Denfield, along the edge of the Denburn Council Depot and through the Smeaton Industrial Estate.

- Look at potential to enhance and strengthen the 'on-street' connection from the Dens to the Kirkcaldy Coast Green and blue network (KIRGN01) and the town centre.
- Deliver a traffic free cycleway section along Overton Road at St Andrews High School.
- Develop cycle route along St Clair Street, Rosslyn Street and Park Road.
- Potential to improve habitat and landscape value through appropriate new planting and management of existing vegetation. The CSGN Habitat Networks and Opportunity Areas mapping has identified a primary opportunity area for woodland enhancement to improve habitat connectivity at Den Road Playing Fields.
- Enhance and strengthen important active travel connections to Kirkcaldy, including in the long term delivering a multi-use route along Hendry Road.
- There is a proposal for allotments to the rear of Lilac Crescent being taken forward by Fife Council.
- The Templehall Neighbourhood Masterplan includes opportunities to improve play parks and community greenspaces, provide growing spaces, improve the walking/cycling network; and provide environmental improvements to the shopping area including more green infrastructure.
- The Fife NHS Greenspace Strategy identifies opportunities for biodiversity enhancements to courtyards, rooftops, verges and lawns; and the potential to create new green corridors, pockets parks and gardens within the Victoria Hospital Grounds, Whytemans Brae Hospital, Kirkcaldy Health Centre and 26 Matthew Street.
- The Kirkcaldy Charrette held in February 2014 identified the following green and blue network opportunities for the area – this will be reviewed at the Proposed Plan stage of Fife's LDP2:
 - There are numerous opportunities to create new pedestrian / cycle connections throughout the area. The viability of these should be explored with particular priority being given to the cycle/pedestrian link from the Den Road playing fields into the hospital campus and the link from Dunnikier Rd to the A921. This would pass along the former dismantled railway track which begins parallel to the main railway line. It would pass beneath the Victoria Road bridge through the leafy gorge and exit between the Mill buildings and the Fife College Priory Campus.
 - Long-term future potential could be explored with Forbo Nairn Ltd to open the existing narrow underpasses under the railway for public pedestrian use to link the Den Road greenspaces with Nairn Street and possibly a continuation within the green gorge under the viaduct.
 - Impenetrable areas such as those which follow the watercourse south of Hayfield Road alongside the Council Yard should be opened up and provide recreational access from new housing development along Maltings Road.
 - Improvement of the greenspace off Melrose Crescent required alongside any future redevelopment of the former Tramworks site on Den Road, with access provided to Denburn Place and Den Road. It currently feels cut-off and deserted.
 - Potential in the short term to retain the eastern part of the Nairn Street site as a grassed area for formal and/or informal recreation.
 - Enhancement and upgrading of the Leisure Facilities with upgraded sports pitch provision; 4G kickabout; enhanced facilities and organisation that support active community uses; community management; and inter-generation activity.
 - Potential to promote active use through working with partners (Victoria Hospital- NHS staff / Forbo Nairn / Fife College) and ensuring good connections that also support path connections to access employment/leisure/education/passive recreational use including connections to wider residential areas and the Town Centre.

Development Plan Priorities:

- Protect existing green and blue network assets
 - The green and blue network priorities below relate to proposals in Fifeplan (2017) these will be reviewed at the Proposed Plan stage of Fife's LDP2.
1. LDP proposal KDY 019 (Victoria Fields) – priorities in developing this area should be to:
 - Establish a high quality development edge fronting on to the greenspace immediately south of the site and provide good access from the development into the greenspace and through to Den Road as a key route to the town centre.
 - Provide an east-west pedestrian and cycle path along the southern boundary of the site.
 - Consider the appropriateness of an off-site contribution to enhance the quality and multi-functionality of the Den Road greenspace south of the site and towards re-establishing a foot/cycle connection along the site's eastern edge to connect Smeaton Rd with Hayfield Rd.
 - Deliver a good development edge onto the route along the eastern boundary of the site, and provide path connections to access this route from the development.
 - Protect the woodland habitat to the north east of the site.
 2. LDP proposal KDY 014 (Hayfield Road) – priorities in developing this area should be to:
 - Enhance the existing path to the west of the site. Manage the woodland at East Den and create a north-south access through this area. Deliver a good development edge onto both these areas and provide path connections to access these routes from the development.
 - Protect the woodland habitat to the south of the site (west of Denburn Road) and provide access through the woodland which connects to the existing path to the west of the site and a new route to be made through East Den.
 - Provide a high quality landscape edge (including access) to the south of the development (east of Denburn Road) which connects the woodland west of Denburn Road to East Den. Deliver a good development edge onto this area.
 3. LDP proposal KDY 017 (Factory Road/Nairn Street) – priorities in developing this area should be to:
 - The mature deciduous trees within the site and lining the Factory Road frontage should be retained as far as possible since they contribute positively to the local environment/streetscape.
 - Provide a high quality landscaped edge to the railway.
 4. LDP proposal KDY 018 (Den Road, Former Tramworks site) – priorities in developing this area should be to:
 - Provide high quality development frontages to the playing fields to the east, the greenspace to the north, Den Road/railway to the south and a well-integrated boundary with residential properties in Smeaton Gardens.
 - Provide a north-south connection along the western boundary of the site linking Den Road to Melrose Crescent and an east-west connection to the north of the site linking the greenspace at Melrose Crescent to Thornhill Drive and the adjacent playing fields.
 - Consider the appropriateness of an off-site contribution to enhance the quality of the Melrose Crescent greenspace.
 5. LDP proposal KDY 029 (Victoria Road, Former Power Station) – priorities in developing this area should be to:
 - Contribute towards re-establishing an active travel route along the disused railway to the north of the site and provide path connections to access this routes from the development.

KIRGN05: Kirkcaldy East Strategic Development Area Green and blue network

Strategically important area for the establishment of a green and blue network 'hub' as a key mechanism in helping to integrate the development of the Kirkcaldy East Strategic Development Area (LDP proposal KDY 032) with its wider setting and adjacent community.

Key Features:

- Significant area for the establishment of an integrated and connected green and blue network as part of the development of the Kirkcaldy East Strategic Development Area.
- Existing active travel network in the southeast provides some connectivity to the Kirkcaldy Coast Green and blue network (KIRGN01) and some on-street connectivity to west. Generally, there is relatively poor existing connectivity to the rest of the town, with key barriers including the East Coast Railway line and a busy surrounding road network.
- Existing woodland assets to the north (Boreland) and east (part of the Wemyss Estate Designed Landscape) provide some notable habitat value locally.

Opportunities for Enhancement:

- Aspiration for a cycle route along the A955 linking Kirkcaldy, St Andrews and Dundee (East Neuk 50).
- The CSGN Habitat Networks and Opportunity Areas mapping has identified a secondary opportunity area for woodland enhancement to improve habitat connectivity along the Standing Stane Road west of Forester's Moor

Development Plan Priorities:

- Protect existing green and blue network assets
 - The green and blue network priorities below relate to proposals in Fifeplan (2017) these will be reviewed at the Proposed Plan stage of Fife's LDP2.
1. LDP proposal KDY 025 (Kirkcaldy East Strategic Development Area) – the priorities in developing site should be to:
 - Provide high quality landscape and access links:
 - Connect to the Kirkcaldy Coast Green and blue network (KIRGN01) and the Fife Coastal Path;
 - North-south links through the site to connect to the Dunnikier to Northern Edge Green and blue network (KIRGN03) and across Redhouse roundabout to Thornton; and
 - To provide good connections to adjoining communities.
 - Establish new high quality greenspace as an integral part of the wider green and blue network within the site, combining green space functions with active travel, habitat, sustainable urban drainage and landscape provision. The Kingslaw Burn should form an integral part of new greenspace in the Strategic Development Area.
 - Develop a new high quality landscape edge as key entry point to Kirkcaldy from north east (travelling along Standing Stane Road and the East Coast Railway Line) – which incorporates active travel provision and new habitat provision.
 - Deliver safe active travel access across the A92 Redhouse roundabout to provide improved access between Thornton and Kirkcaldy east.
 - Enhance the landscape and habitat edge along the A92 including establishing a key missing green and blue network connection along the north boundary of the western employment site to connect to the Kirkcaldy East Strategic Land Green and blue network (KIRGN05).

KIRGN06: Chapel to the Dens Green and blue network

A finer grain green and blue network travelling east-west, linking from Chapel through Chapelhill to Middle Den in the east, along a series of small connected greenspaces, which follow the course of the culverted Chapel Burn.

Key Features:

- Existing active travel route connects to Raith to Seafield Green and blue network (KIRGN02) albeit across the A910; to Dunnikier to Northern Edge Green and blue network (KIRGN03) across the B981 and to the Kirkcaldy Dens Green and blue network (KIRGN04) across Hendry Road.
- Greenspace assets are currently of poor quality and relatively low multi-functional value, investment is required to enhance their quality, amenity and habitat value. Includes Torbain Primary School grounds.
- The greenspace corridor relates to the route of the Chapel Burn, which is culverted through the entire area.
- Significant potential to enhance contribution to the landscape setting and quality of place.

Opportunities for Enhancement:

- Greenspace assets require investment to improve their quality, amenity & habitat value
- Chapel Burn – removing the culverts could be considered in relation to other greenspace improvements, with opportunities to restore the watercourse to a more naturally functioning system, offering wider habitat and amenity benefits.
- The Templehall Neighbourhood Masterplan includes opportunities to improve play parks and community greenspaces, provide growing spaces, improve the walking/cycling network; and provide environmental improvements to the shopping area including more green infrastructure.

Development Plan Priorities:

- Protect existing green and blue network assets