

South West Fife Area Surveys' Analysis 2022

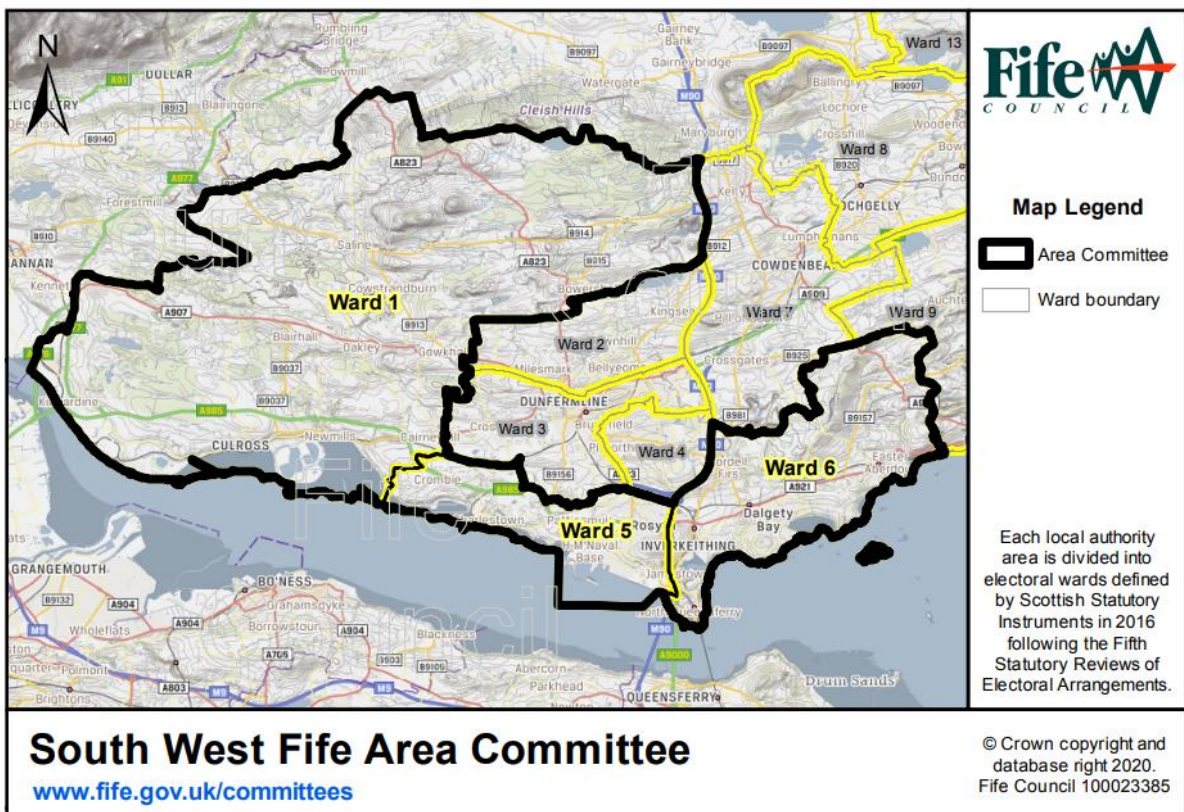
Please click on the survey analysis you are interested in below:

- [Have Your say on the future of Fife's places analysis](#)
- [Disabled persons and place survey analysis](#)
- [Businesses & organisations survey analysis](#)

If you'd like to comment on this analysis email Fife Council at Fife.Devplan@Fife.gov.uk by **midnight 29th November 2023** or write to:

Policy & Place Team
Planning Service
Fife Council
Fife House West
North Street
Glenrothes
KY75LT

We would appreciate it if you would provide the name of the survey and town/village/location on which you are commenting on in your response, thank you.

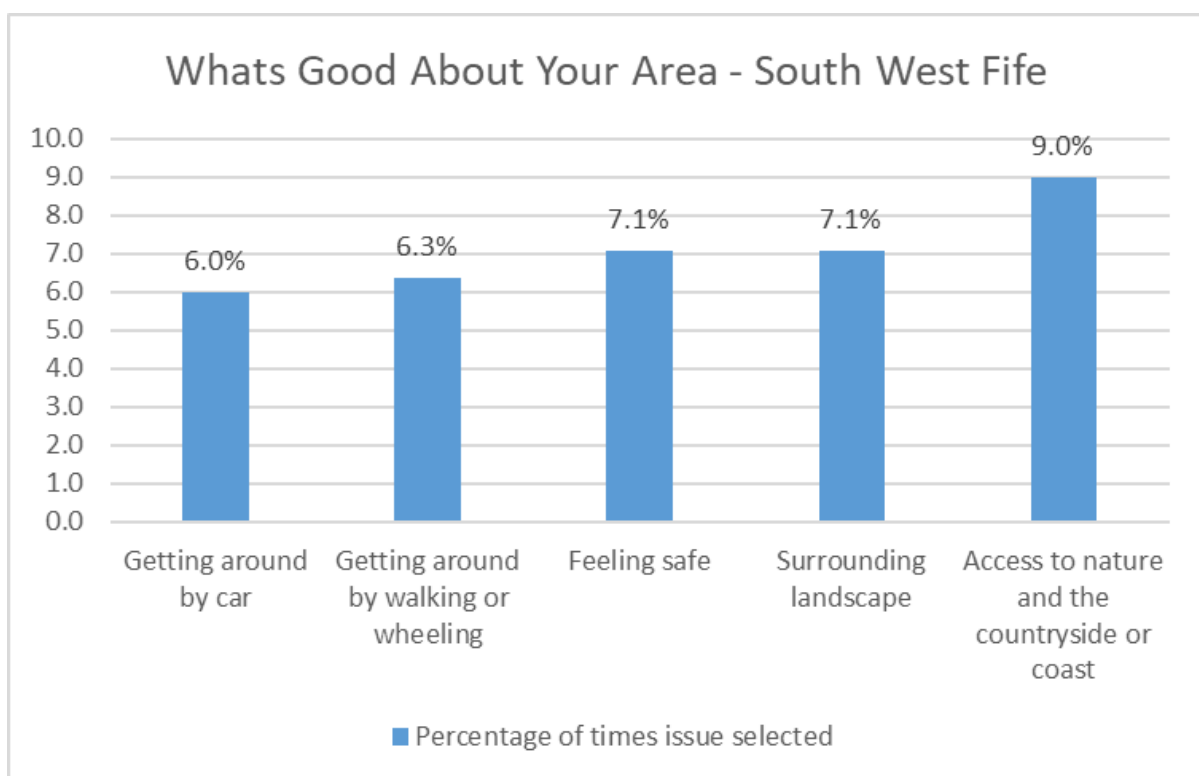


Have your say on the future of Fife's places survey analysis – South West Fife Area 2022

In 2022 we asked you what you thought was good and bad about where you live and the challenges these places face due to things such as the climate emergency and food resilience. The online survey provided an opportunity for people to have their say in helping shape where they live by highlighting the issues that they think need to be tackled by the next Local Development Plan for Fife.

1.0 What's good about your area

Figure 1 – What's good about your area?

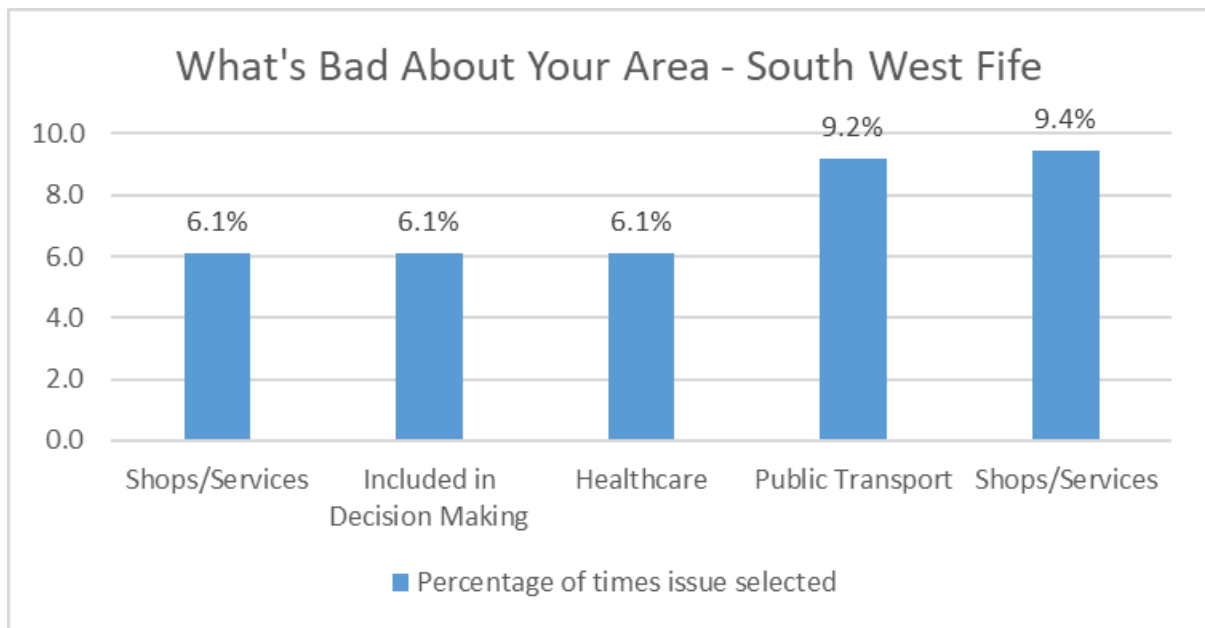


Feedback from the survey found that Blue/Green Infrastructure was seen as the best aspect of the South and West Fife Area with 9%. Surrounding Landscape was also seen as a good aspect alongside safety, both with a percentage of 7.1%. Feedback from respondents said active travel and transport links were good, although some respondents, particularly in Culross, disagreed and said that Culross felt a bit isolated with no trains and a limited bus service.

Respondents also mentioned that the village environment and the surrounding existing green space was a positive for mental health.

2.0 What's bad about your area

Figure 2 – What's bad about your area?

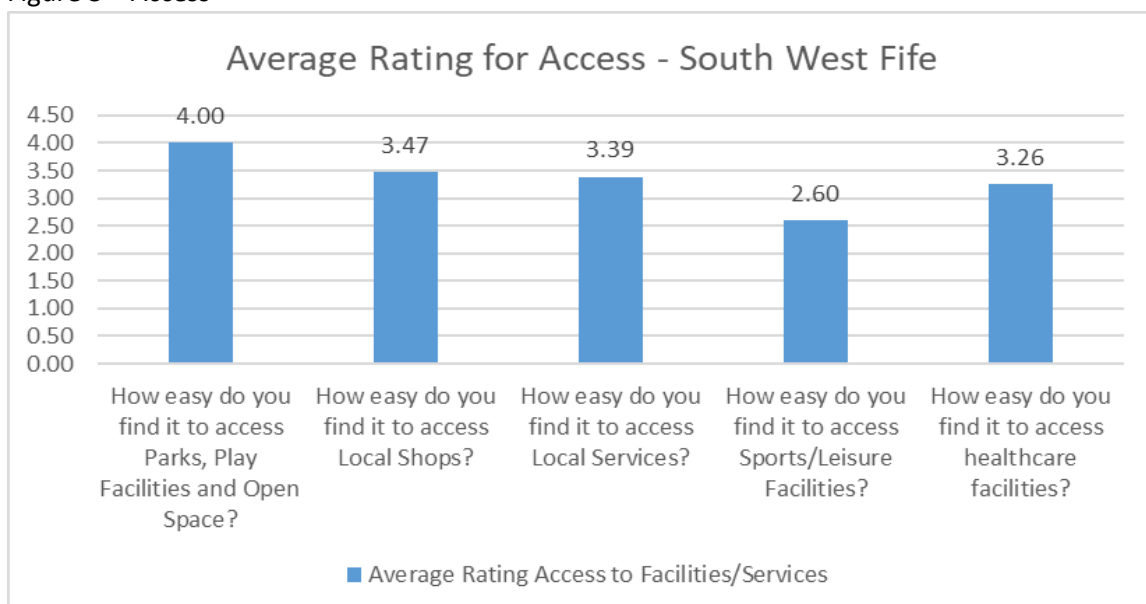


Respondents said that Shop/Services were the worst aspect within the South and West Fife area with 9.4%. Public Transport followed closely behind with 9.2%. Feedback mainly focused on the limited public transport and the lack of quality shops. Rosyth was mentioned in having a poor town centre. Community facilities are also a concern with few places to exercise/leisure centres.

3.0 Access

We asked you how easy it is for you to access local services and facilities in your area based on how easy it is to travel to the facility or service taking into account things like opening times, ease of getting appointments etc.

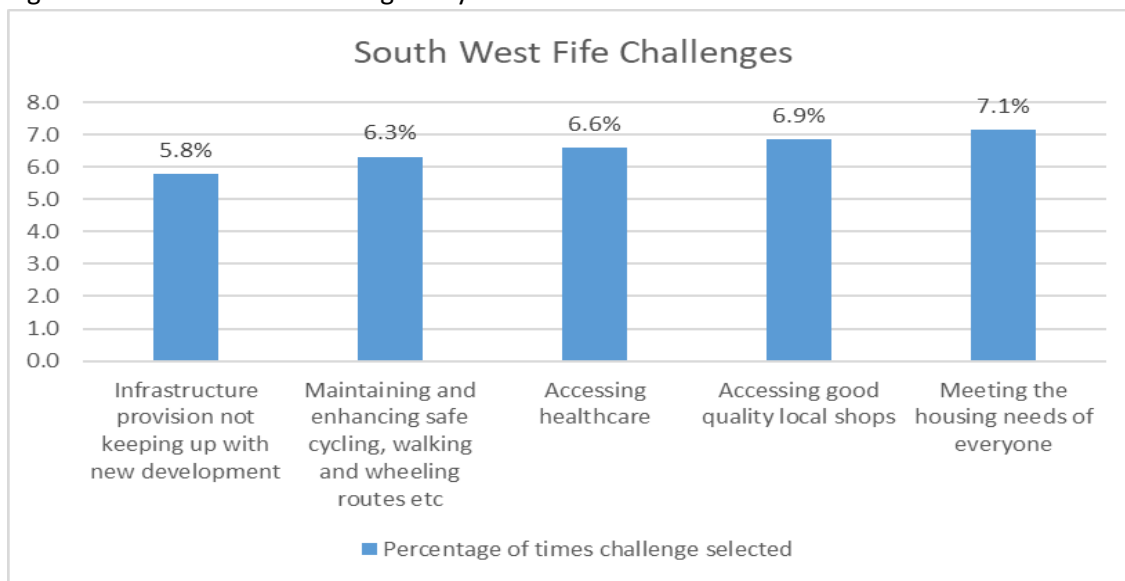
Figure 3 – Access



Within the South West Fife area, access to sports/leisure facilities was given the worst average rating at 2.6. Feedback often highlighted that there aren't facilities near the towns within the area, and that existing facilities were of poor quality and in need of upgrading/refurbishment. Access to the facilities via public transport was seen as poor with a limited bus service, either hourly or stopping early evening, resulting in a car dependency. All journeys now usually end up going to Dunfermline for sports and leisure Facilities.

4.0 Challenges

Figure 4 – What are the challenges in your area?



Meeting housing needs for everyone is seen as the South and West Fife's biggest challenge with 7.1%. Access to good quality local shops is also considered a challenge (6.9%). Residents also think that local infrastructure isn't up to what is needed, particularly when new housing estates are being built (5.8%).

Feedback identified public transport was a challenge as there is limited links to outside of Fife with the main route having to go through Dunfermline.

Fife Local Development Plan - Disabled Persons and Place Online Survey (2022) Analysis – South West Fife Area

The survey was carried out late 2022 and aimed at finding out about the issues facing disabled persons in relation to where they live and the places they visit. We wanted to know how people find access to things like local shops, sports/leisure facilities, parks etc and what they think can be done to make these places more accessible for everyone. We also wanted to hear about the challenges facing where people live which could be things like the climate emergency or future access to public transport.

1.0 Where you live

Q1 Where do you enjoy going when out and about?

As with the other areas the main places people like to visit are leisure in nature and includes places like parks, town centres, cinemas and local walks.

Some people prefer to visit Edinburgh and the busier towns of Fife.

Q2 Are there places you would like to go but haven't been able to due to access issues?

A common theme of the responses is poor public transport provision in terms of frequency and connectivity. A lack of street furniture including seating prevents some people from using places.

Q3 How easy do you find it to get around where you live by walking and/or wheeling?

There was a mixed response to his question with some finding it easy and others difficult. Again, a lack of seating for resting when on walks etc was highlighted as an issue.

Q4 What improvements could be made to improve walking and/or wheeling routes in your area?

As with other areas in Fife the poor maintenance and/or enhancement of the path network was seen to be something that could be improved. Lowering of pavements is mentioned as needed across the area.

Whilst not a local development plan issue cars parking on paths is a significant issue for those with disabilities.

Seating along the path network was offered as an improvement that would encourage active travel.

The use of monoblocks for paths was raised as a barrier to some.

Q5 How easy do you find it to access local shops and services? For example, grocers, hairdressers,

council offices, libraries, restaurants etc.

The majority of respondents felt that it was fairly easy to access to local shops and services. Some of the more isolated settlements such as Saline have limited local options.

Q6 What improvements could be made to improve access to local shops and services?

Again maintenance and/or enhancement of paths and roads were seen as areas of potential improvement.

A walking and cycling route from Saline to Oakley was seen as desirable.

Seating areas in public areas at shopping area and other public spaces was suggested.

Q7 How easy do you find it to access parks, green space and countryside?

Most respondents find parks, green space and the countryside fairly easy to access, however that cannot be said for everyone as some do have difficulty doing so.

Hidden disabilities such as autism was highlighted an issue as there are blue baches for those with physical disabilities not hidden.

Q8 What improvements could be made to improve access to parks, green space and countryside?

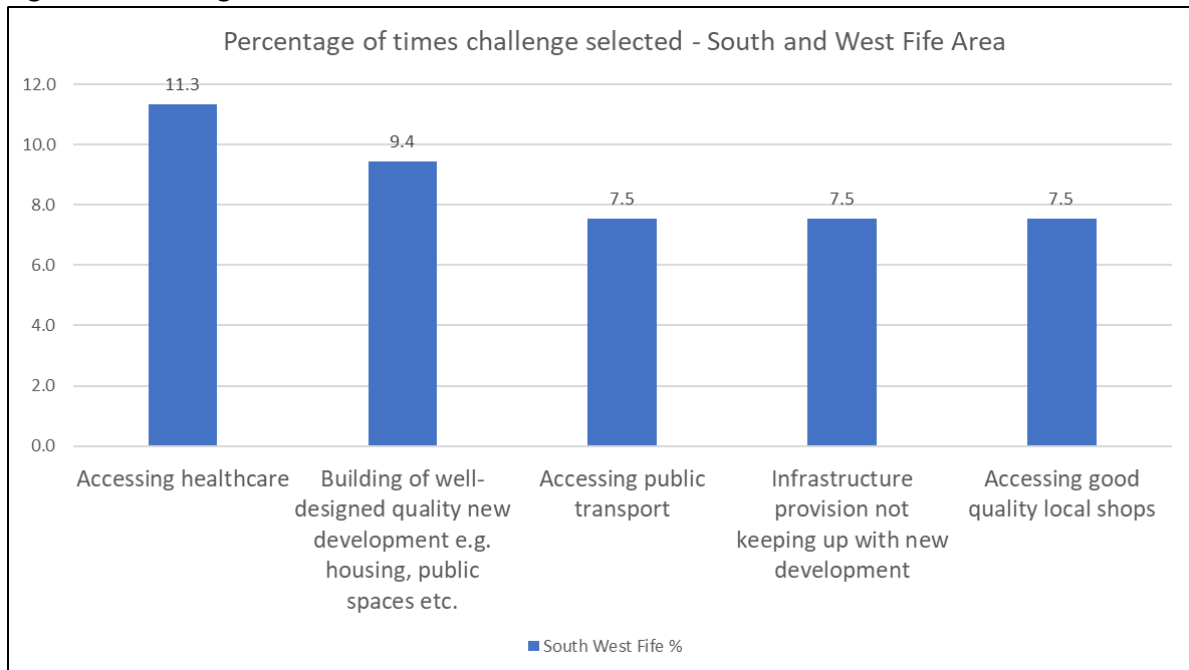
The provision of appropriate parking for all disabilities.

More seating areas were suggested as a way of improving access.

2.0 Challenges

What do you consider to be the biggest challenges facing where you live?

Figure 1 - Challenges



Accessing healthcare is thought of as the biggest challenge facing the area, followed by the design and quality of new development. Accessing public transport, inadequate infrastructure and access to good quality local shops were also seen as challenges.

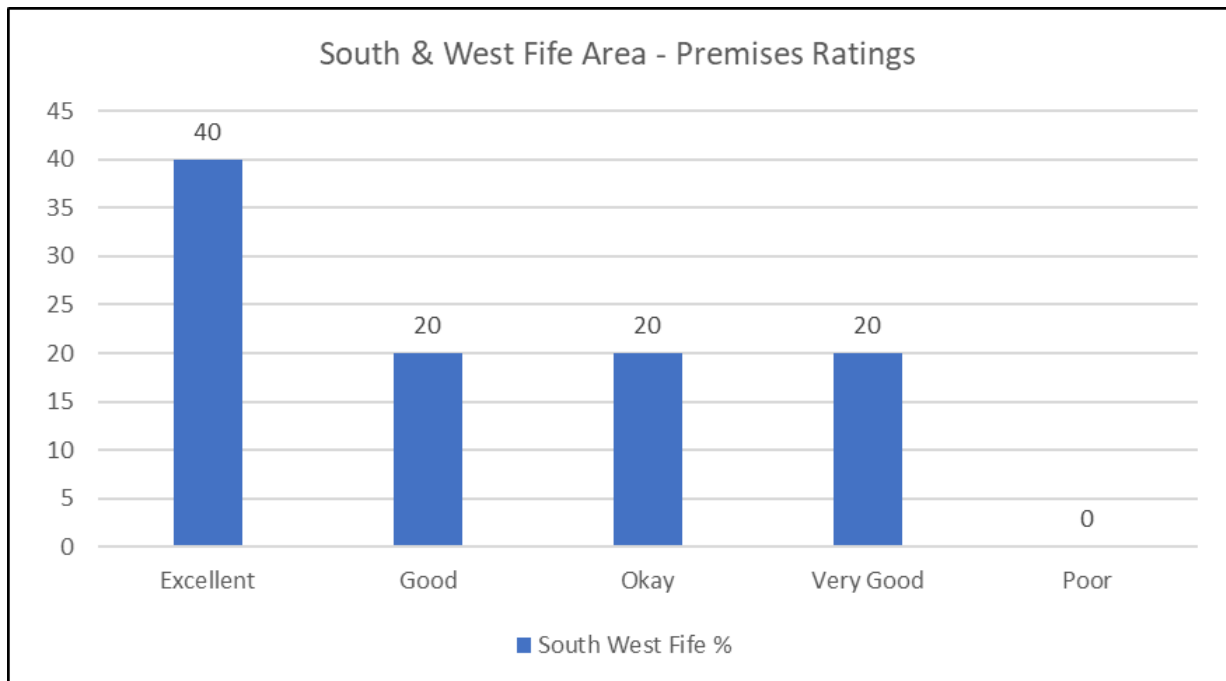
Please comment further on what you consider to be the biggest challenges facing where you live

N/A

Fife Local Development Plan - Businesses and Organisations Survey Analysis – South West Fife Area

This consultation was carried out late 2022 and gathered views on important issues like the local economy, modern business properties, availability of employment land to develop and renewable energy. We also asked for views on key future challenges for Fife.

1.0 How would you rate your premises?



The majority of respondents (80%) rated their premises as good, very good or excellent with none rated as poor.

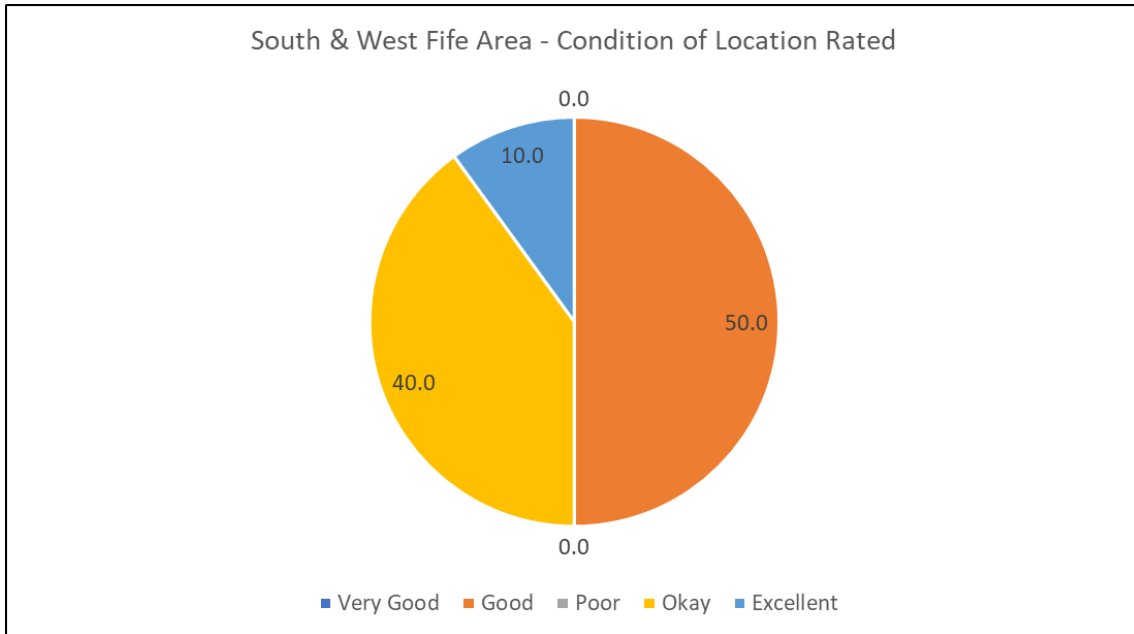
2.0 Please tell us what is good and/or bad about your premises.

Good locations came through strongly in the responses along with an appreciation of green spaces.

The condition of some properties was described as excellent and affordable but one or two deemed to be in not very good condition.

Nature, the surrounding landscapes and historic environment were listed as being good about some of the more rural areas of the South and West Fife Area.

3.0 How would you describe the condition of the Industrial Estate/Business Park/town centre/other location your business/organisation is based?



The condition of employment locations was generally thought of positively with none being rated as poor.

4.0 Please tell us what is good and/or bad about the Industrial Estate/Business Park/town centre/other location your business/organisation is based.

The poor condition of some employment areas came through as theme, in particular the roads and signage displaying which businesses are located there. In contrast some areas were deemed to be attractive and well maintained.

Transport links were highlighted as a positive for the area, with good access to the rest of Fife and Central Scotland.

The lack of ancillary uses e.g. gyms in or near some employment areas is seen as an issue.

5.0 What issues do you want the next Local Development Plan to look at?



6.0 Please tell us about any other issues not listed above that you want the next Local Development Plan to look at.

There is a lack of delivery of office or commercial buildings at Admiralty Business Park in Rosyth leading to unwarranted camping and trespass and this detracts from visual appearance of the location not suited for professional services customers.

Ensure a good spread and mix of uses. NPF4 seeks the reuse of brownfield sites for housing and appropriate policies to allow uses to exist adjacent and close proximity to meet the NPF4 aims are sought.

There is a large surplus of protected 'employment land' in Fife which could be used (instead of green fields) for a wider range of commercial or community needs, e.g. gym, childcare, cafe, meeting places, electric vehicle charging. More flexibility required for sites which are long vacant, or which are compatible with these mentioned uses.

The Admiralty Business Park could be improved with new buildings and more occupation by professional or manufacturing activities. Vacant sites attract unwarranted visitors and this detracts from the visual appearance of the location and can put off investors and visitors.

Increase the range of commercial business onto the location, not just manufacturing, storage or general industrial. e.g. more scope for gym, childcare, cafe, meeting places and more electric vehicle charging.

Tourism planning and visitor numbers and types communicated to local businesses.

Make it simpler for established successful rural businesses suitable expansion to create spaces to attract tourism and develop the well being economy.

