



Community Learning & Development Plan 2024-27



2025 Update

Contents

Introduction	3
The Current Context	4
Developing the Plan 2024-27 (Years 2 and 3)	5
Workforce Development	6
Governance and Reporting	8
Unmet Need	9
Appendices	
Appendix 1. Appendix 1: Delivery Plan 2025 to 2027	10
Appendix 2. Appendix 2: Reference / Support Documents	21
Appendix 3. Appendix 3: CLD Outcomes	22
Appendix 4. Appendix 4: National KPI's	23



Improving life chances for people of all ages, through learning, personal development, and active citizenship
Stronger, more resilient, supportive, influential, and inclusive communities

Fife CLD Partnership Members



Introduction

On behalf of the Community Learning and Development Partnership, we welcome you to this update of the Fife Community Learning and Development (CLD) Plan 2024-27. This builds on our year one bridging plan [CLD-plan-2024-final.pdf](#) which sets out the rationale for our CLD plan, the Policy and Fife context, CLD shared priorities, year one actions, workforce development activity, and our governance and reporting arrangements.

This 2025-27 Plan builds on that foundation and, although many of our actions are continuing in years 2 and 3, we have also used data and evidence to identify further activity and delivery.

We have reviewed our year one actions and our Year One Progress Report ([Link to Year One Progress Report to be added here](#)) shows that we are making progress with all our actions particularly around CLD delivery plans and partnership development. Significant work has also been done through the CLD Partnership on the development of a Partnership Youth Work Strategy for 2025-2028 and this was launched in October 2025. This Strategy sets out essential features of Youth Work in Fife, outcomes, priorities, ambitions, and measures and in year one includes a focus on how we further raise awareness of relevant services and activities, identify gaps in provision, and the promotion of safe spaces for young people to get involved.

Julie Dickson Fife Council
Co-chair of Fife CLD Partnership

We have also identified that there is further work to do around sharing data and measuring outcomes and we will build on this further over the next year – this will enable us to improve our overall reporting processes and further highlight the overall impact of CLD activity.

Community learning and development in Fife continues to be supported by strong partnership working across public sector agencies, third sector providers, and with communities. The CLD Partnership will continue to work with and through Fife wide and local partnership groups to plan, deliver and review the effectiveness of the Plan and, alongside communities, will continue to identify further areas for collaborative action.

Through co-ordinated partnership working, our aim is that communities will be stronger, more resilient, and have more robust community organisations; local people are empowered to make positive, informed choices and contributions to civic society; and the planning and delivery of CLD in Fife is effective and maximises the impact of available resources.

Helen Rorrison Fife Voluntary Action
Co-chair of Fife CLD Partnership



The Current Context

The CLD Plan is one of the delivery vehicles for the Plan 4 Fife. In our year one bridging plan we set out how community learning and development activity contributes to the Plan for Fife themes and outcomes, and we identified our CLD actions against four priority themes:

- Opportunities for All
- Thriving Places
- Community Led Services
- Inclusive Growth and Jobs

Overall, there continues to be a focus on reform and recovery priorities:

- Community Wealth Building
- Leading economic recovery
- Tackling poverty and preventing crisis
- Addressing the climate emergency

These priorities continue to drive the work that we do and our CLD delivery plan identifies how we are contributing to these.

The current Plan 4 Fife also sets out our focus on prevention and early intervention, underpinned by a person-centred approach, and it is recognised that CLD activity is well placed in contributing to this approach

More broadly, the 'No Wrong Door' approach (NWD) has been designed to build on person-centred approaches already embedded in Fife Council Services. NWD is about moving forward the development of those approaches and work is currently progressing in the Cowdenbeath locality, where new ways of working across services, partners and the community are being tested. Work in this locality will inform NWD across Fife.

Nationally, the work on the implementation of the National CLD Review Recommendations is continuing through the work of the Strategic Leadership Group and we will consider our CLD delivery arrangements as appropriate when we receive further updates on progress.

During the life of this CLD Plan, work on the refreshed Plan 4 Fife (2027 onwards) will be progressing and that process will also enable us to ensure that CLD activity is fully embedded and contributing to overall outcomes and activity.



Developing the Plan 2024-27 (Years 2 and 3)

In developing this update to our CLD Plan, we have reviewed the actions and progress in our current CLD bridging plan (as set out in our progress report), explored priorities via the CLD Partnership, consulted with area leads, met with key partner agencies, and we have also built upon the HMle follow up to our Progress Visit. Across the seven localities feedback has also been gathered from learners to identify needs and aspirations – that work is ongoing and is informing the planning and delivery of CLD activity.

As a result of this activity, we are continuing the delivery of key activity that was set out in year one, and have identified some additional actions that are included within our Delivery Plan:

The CLD Partnership will continue to work with and through our Fife and local partnership groups to plan, deliver and review the effectiveness of our actions and, alongside communities, will continue to identify further areas for collaborative action.

These partnership groups include:

- People and Place Leadership Groups
- Youth Strategy Groups
- Poverty Action Groups
- Adult Learning Planning and Delivery Groups
- HSC Locality Groups

Our Delivery Plan for 2025-27 is set out in detail at Appendix 1.

Learner pathways and progression

This is an area of work that has been highlighted across partners and there is a need to ensure that we have clear information and support for learners that enables them to progress from their entry point to appropriate opportunities that meet their goals.

Intergenerational Work

Fife Council and partners recognise the unique skills and experience each generation brings and to advocate for policies that promote Intergenerational volunteering/working as a means of improving understanding between generations and community cohesion. A motion was passed at full Council that Intergenerational work will be embedded in policy and strategy that will include:

- Increasing knowledge and understanding of intergenerational approaches
- Delivering support and encouraging involvement to benefit all of Fife's generations, by working, learning, volunteering, and living together.

Actions in this CLD Plan will support the overall development of an Intergenerational Strategy for Fife.



Workforce Development

We will ensure that CLD practitioners can access high quality, relevant and role appropriate training and development opportunities, and we are committed to encouraging and nurturing a learning culture. Our practitioners and volunteers are guided by a professional practice framework based on competences and a critically reflective responsibility to how they approach their work as set out in figure 1.



Figure 1

Workforce Development

Planned activity

On-going delivery of in house and partner training

- Opportunities to support skills and knowledge continue to be offered across a range of services / partners including Food Champion and REHIS Centre work.
- Workforce Development offer – the development of in-house training publication.
- Introduction of refreshed Quality Improvement Framework and supporting materials.
- Development of Community Engagement Support Offer which includes E-Modules

Tayside and Fife Alliance – delivery of joint training opportunities

Based on priority themes identified by the workforce, we will deliver joint opportunities on the following topics:

- Community Engagement – Conference in November 2025 will provide an opportunity to explore and share good Community Engagement practice.
- Health Issues in the Community (HIIC) - Course planned for early 2026 that will support the development of skills and knowledge to address health issues using community development approaches.

Supporting professional pathways to CLD

We will support opportunities that provide professional pathways to CLD:

- Work based degree programme.
- Support work placement opportunities for those studying CLD.

Community Learning and Development Standards Council (CLDSC)

- We will continue to promote membership of CLDSC, and support the workforce to attend CLDSC member events, seminars and practice sharing forums.

Policy and Practice Development

- To support the ongoing development of practice and policy, we will support staff to contribute to and benefit from local and national working groups and forums,
- We will also review the support offer from the CD support team to ensure practitioners receive appropriate support



Governance and Reporting

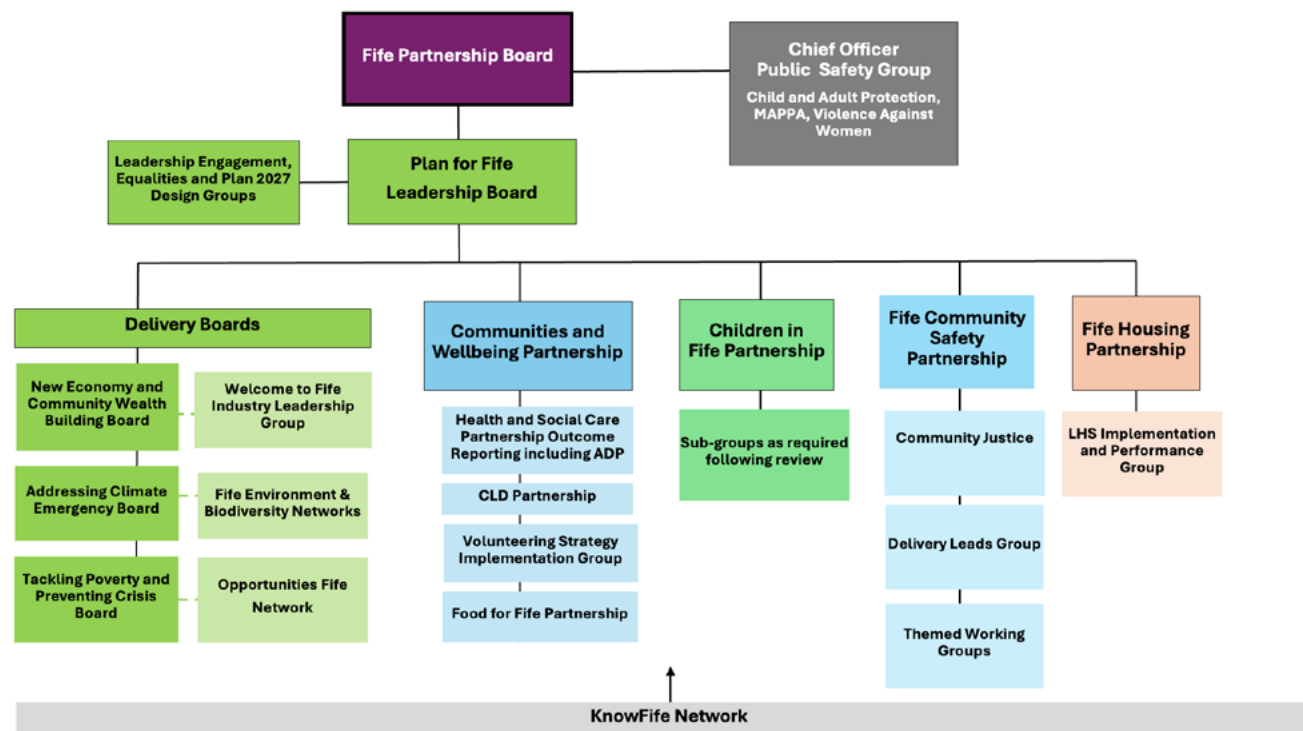
The CLD Partnership will continue to report directly to the Communities and Wellbeing Partnership (CWP) as part of the wider Fife Partnership Board structure and delivery arrangements.

The CLD Partnership will continue to monitor progress against the agreed actions through on-going Partnership meetings and agreed sub-groups.

The CLD Partnership will report on progress annually to the Communities and Wellbeing Partnership. Annual progress reporting will also be included as part of the Communities and Neighbourhoods Annual Performance Report to Fife Council People and Communities Scrutiny Committee.

At local area level, CLD activity will continue to be reported to the Area Committees as per their local area arrangements.

Plan for Fife Delivery Structure



Unmet Need

Through the work that we have done to date, on-going engagement with and feedback from learners and communities, local intelligence, evaluation of CLD activity, and local community profiles we have a better understanding of need – and this is informing planning and delivery of CLD activity.

However, it may not always be possible to reach everyone that needs CLD support, and we recognise that we need to do more to target specific data zones. In addition, we also need to explore and consider rural issues that may result in disadvantage.

We have also seen an increasing demand for ESOL programmes over the last 3 years but through continued work with the Resettlement Team and Fife College we have been able to deliver additional programmes to ESOL learners.

Recovery funding that was allocated to support CLD activity post pandemic has supported work with learners and communities and this has contributed to increased participation levels in some areas. When these sources of temporary of funding end, we may need to further consider gaps in provision and unmet needs. This may also have an impact on our overall attendances in future years.



Appendix 1: Delivery Plan 2025 to 2027

Adult and Family Learning

Expected Change	CLD Outcome	Plan 4 Fife Themes	Actions	Partners	Measures of Success
Community-based adult learners have improved skills across the four thematic areas of family, work, community, and personal skills.	AL1 AL2 AL3 AL5	<ul style="list-style-type: none"> Opportunities For All Inclusive Growth and Jobs 	<ul style="list-style-type: none"> Adult Learning Delivery Groups will support delivery of Community Based Adult Learning (CBAL) courses based on local needs (this includes digital skills, health and wellbeing, outdoor learning, 7 habits and REHIS programmes) 	<ul style="list-style-type: none"> CLD, ABE, ESOL, Fife College, Third Sector Providers, Community Food Team, NHS 	KPi 1-5, 13 <ul style="list-style-type: none"> Range and number of courses delivered Number of learners completing the courses Number of Adults moving into positive destinations e.g., further learning, volunteering, employment Individual Learning Plans Case Studies
Adult Basic Education (ABE) learners have developed their literacy, numeracy, and core skills	AL 1 AL3 AL5 AL7	<ul style="list-style-type: none"> Opportunities For All Tackling Poverty and Preventing Crisis 	<ul style="list-style-type: none"> Continued delivery of learner centred community-based ABE programmes that support development of reading, writing, numeracy, and ICT including SQA qualifications at level 3 and 4 	<ul style="list-style-type: none"> ABE 	KPi 1, 2, 3, 13 <ul style="list-style-type: none"> Range and number of courses delivered Number of learners completing the course Learners reporting increased confidence with their literacy, numeracy, and digital skills Number of learners achieving SQA qualifications in literacy, numeracy, and core skills Individual Learning Plans Case Studies

Appendix 1: Delivery Plan 2025 to 2027

Expected Change	CLD Outcome	Plan 4 Fife Themes	Actions	Partners	Measures of Success
English for Speakers of Other Languages (ESOL) learners, including New Scots, learn and improve English skills	AL1 AL3 AL4 AL5 AL6	<ul style="list-style-type: none"> Opportunities For All 	<ul style="list-style-type: none"> Continue delivery of core ESOL provision Deliver community programmes to support ESOL learners to participate in wider community-based learning opportunities Regular strategic and operational meetings with Fife College to map need and cater to demand and ensure clear pathways between providers exist 	<ul style="list-style-type: none"> ESOL / Fife College 	KPi 1, 2, 3, 13 <ul style="list-style-type: none"> Range and number of courses delivered Number of learners completing the course Individual Learning Plans Case Studies Fife Council and Fife College ESOL Partnership Agreement and Memorandum of Understanding
Adult learners improve their wellbeing through engagement in adult learning	AL1 AL2 AL3 AL4 AL5	<ul style="list-style-type: none"> Opportunities For All 	<ul style="list-style-type: none"> Continued development of short courses to engage adults in learning based on local need 	<ul style="list-style-type: none"> CLD / Local adult planning and delivery groups 	KPi 1,9 <ul style="list-style-type: none"> Range and number of courses delivered Number of adult learners engaged in short courses Case studies and impact statements Progression to other opportunities



Appendix 1: Delivery Plan 2025 to 2027

Expected Change	CLD Outcome	Plan 4 Fife Themes	Actions	Partners	Measures of Success
Progression Pathways for learners are well established and clear for learners	AL1 AL2 AL3 AL4 AL5 AL6 AL7	<ul style="list-style-type: none"> ● Opportunities For All ● Inclusive Growth and Jobs ● Tackling Poverty and Preventing Crisis 	<ul style="list-style-type: none"> ● Develop Learner Pathway that improves opportunities for learner progression at range of levels, including employment 	<ul style="list-style-type: none"> ● CLD Partnership – Adult Learning subgroup and local partners 	KPi 1,2, 3 <ul style="list-style-type: none"> ● Adult Learning delivery offer mapped out across partners ● Case studies ● Learner feedback and impact statements ● Learner progression
Foster stronger connections between generations through Intergenerational Work.	AL1 AL2 AL3 AL4 YW2 YW7	<ul style="list-style-type: none"> ● Opportunities For All 	<ul style="list-style-type: none"> ● Explore good intergenerational practice via Generations Working Together (GWT) and partner agencies / other local authorities ● Test out the creation and delivery of an intergenerational learning programme in Kirkcaldy 	<ul style="list-style-type: none"> ● CLD Kirkcaldy ● GWT ● CLD support team 	KPi 1, 4, 5, 6 <ul style="list-style-type: none"> ● Learning from practice elsewhere ● Test Project in Kirkcaldy completed and evaluated ● Findings to inform overall Intergenerational Strategy ● Development of Intergenerational Strategy for Fife is progressing

Appendix 1: Delivery Plan 2025 to 2027

Community Capacity Building

Expected Change	CLD Outcome	Plan 4 Fife Themes	Actions	Partners	Measures of Success
Improved local outcomes delivered through local community plans, neighbourhood plans, and community led action plans.	CD5 CD6 CD7	<ul style="list-style-type: none"> ● Thriving Places ● Community Wealth Building 	<ul style="list-style-type: none"> ● On going review and development of local plans, including joint planning and delivery with other services 	<ul style="list-style-type: none"> ● CLD ● Poverty Action Groups ● Area Partnership Groups 	KPi 12,13 <ul style="list-style-type: none"> ● Completed / updated action plans and progress reporting
Increased community engagement using a range of models of community engagement.	CD1 CD2 CD3 CD4 CD6 CD7	<ul style="list-style-type: none"> ● Thriving Places ● Community Led Services 	<ul style="list-style-type: none"> ● Promote use of the Community Engagement Toolkit ● Community Engagement Improvement Plan refreshed ● Use of Citizen Space platform to support online engagement ● Community Engagement Network further supporting good practice 	<ul style="list-style-type: none"> ● Community Engagement Steering Group, CLD, FC Services, FVA 	KPi 11,12,13 <ul style="list-style-type: none"> ● Steering Group Action Plan and Progress Report ● Case studies ● PB Reports ● Use of Community Engagement Toolkit



Appendix 1: Delivery Plan 2025 to 2027

Expected Change	CLD Outcome	Plan 4 Fife Themes	Actions	Partners	Measures of Success
<p>Individuals and community groups have the capacity to get involved and develop confidence to make changes to enable their communities to grow and develop.</p> <p>Communities involved in service design, problem solving, and resource allocation.</p>	<p>CD1</p> <p>CD2</p> <p>CD3</p> <p>CD4</p> <p>CD5</p> <p>CD6</p> <p>CD7</p>	<ul style="list-style-type: none"> ● Thriving Places ● Community Led Services ● Community Wealth Building 	<ul style="list-style-type: none"> ● Provide community capacity building (CCB) support to community groups and forums ● Support Participatory Budgeting (PB) activity and approaches ● Further support meaningful engagement and involvement using a range of methods including Place Standard, Citizen Space, Engagement Events and Forums 	<ul style="list-style-type: none"> ● CLD, FVA, Link Officers, Community Engagement Steering Group 	<p>KPi 11,12,13</p> <ul style="list-style-type: none"> ● Completed / updated action plans and progress reporting ● Evaluation of completed PB activity ● Case studies and impact statements ● Community / Group Feedback ● Consultation activity recorded on Citizen Space
<p>ESOL learners, including New Scots, participating in local community activities as part of their integration into Fife.</p>	<p>CD1</p> <p>CD2</p> <p>CD3</p> <p>CD4</p> <p>CD7</p>	<ul style="list-style-type: none"> ● Thriving Places ● Opportunities for All 	<ul style="list-style-type: none"> ● Collaboration across local area teams and building connections with wider CLD activity. 	<ul style="list-style-type: none"> ● ESOL, CLD, local learning and activity providers 	<p>KPi 1, 12,13</p> <ul style="list-style-type: none"> ● Summary of activity ● Case studies ● Learner feedback



Appendix 1: Delivery Plan 2025 to 2027

Expected Change	CLD Outcome	Plan 4 Fife Themes	Actions	Partners	Measures of Success
<p>Volunteering opportunities are designed to develop and enhance the skills, knowledge, experience, and wellbeing of all participants.</p> <p>Volunteering opportunities are safe, appropriate, and rewarding for both individuals and communities.</p> <p>Volunteers will be provided with learning and development opportunities</p>	<p>AL1</p> <p>AL3</p> <p>CD1</p> <p>CD3</p> <p>CD4</p> <p>CD7</p>	<ul style="list-style-type: none"> ● Opportunities for All ● Thriving Places ● Community Wealth Building ● Tackling Poverty and Preventing Crisis 	<ul style="list-style-type: none"> ● Ongoing support to volunteer opportunities through agreed roles, volunteer recruitment processes and training ● Further roll out of the Volunteering Certificate in 'Community Learning and Development' across Fife ● Ongoing training for volunteers including induction, and online training. ● Brain Food Volunteer Development Cookbook and REHIS training opportunities delivered to Volunteers supporting community food provision 	<ul style="list-style-type: none"> ● CLD ● Community Groups and Organisations ● Volunteers ● Training Providers 	<p>KPi 1, 6, 12,13</p> <ul style="list-style-type: none"> ● Number of adults volunteering in a CLD setting ● Volunteer hours contributed by adults ● Number of young people aged 10-18 volunteering in a CLD setting ● Volunteer hours contributed by young people 10-18 ● Number of volunteer roles ● Case studies ● Volunteer feedback



Appendix 1: Delivery Plan 2025 to 2027

Expected Change	CLD Outcome	Plan 4 Fife Themes	Actions	Partners	Measures of Success
Consistent development and monitoring of SLAs between Fife Council and voluntary organisations that deliver CLD activity (10k+)	CD1 CD2 CD3 CD4 CD5 CD6 CD7	<ul style="list-style-type: none"> ● Community Led Services ● Community Wealth Building 	<ul style="list-style-type: none"> ● Provide community capacity building (CCB) support through agreed link officer roles ● Gather stats on CLD activity from funded partners for annual reporting 	<ul style="list-style-type: none"> ● CLD / Funding and monitoring teams 	KPi 11 <ul style="list-style-type: none"> ● Annual Monitoring reports ● Link Officer training and support
Foster stronger connections between generations through Intergenerational Work.	AL1 AL4 CD7 YW2 YW7	<ul style="list-style-type: none"> ● Thriving Places ● Opportunities For All 	<ul style="list-style-type: none"> ● Support community-led projects that bring generations together ● Explore good intergenerational practice via Generations Working Together (GWT) and partner agencies / other local authorities ● Promote inclusive community development through intergenerational collaboration 	<ul style="list-style-type: none"> ● CLD, GWT, ● CLD Kirkcaldy 	KPi 4, 5, 12, 13 <ul style="list-style-type: none"> ● Test Project in Kirkcaldy completed and evaluated to inform overall strategy ● Intergenerational Strategy for Fife is developing

Appendix 1: Delivery Plan 2025 to 2027

Youth Work

Expected Change	CLD Outcome	Plan 4 Fife Themes	Actions	Partners	Measures of Success
Partners and young people are involved in shaping the delivery of local services	YW1 YW2 YW4 YW7	<ul style="list-style-type: none"> Opportunities For All Community Led Services 	<ul style="list-style-type: none"> Development and launch of Partnership YW Strategy Single agency delivery plans developed 	<ul style="list-style-type: none"> YW Partnership CLD Partnership 	KPi 6, 12, 13 <ul style="list-style-type: none"> YW Strategy launched Delivery Plans developed
Young people will have access to high quality and effective youth work practice	YW1 YW2 YW3 YW4 YW5 YW6 YW7	<ul style="list-style-type: none"> Opportunities For All 	<ul style="list-style-type: none"> Mapping of youth work activity across Fife (by June 2026) 	<ul style="list-style-type: none"> CLD, YW Providers, YW Partnership 	KPi 6 <ul style="list-style-type: none"> YW offer Delivery Plans Range of opportunities supported Number of young people participating
Young people's achievements are fully recognised	YW3 YW7	<ul style="list-style-type: none"> Opportunities For All 	<ul style="list-style-type: none"> Support existing delivery of nationally recognised awards Share information across services of Young People's achievements Ensure Accreditations are recorded Annual celebration of achievements 	<ul style="list-style-type: none"> CLD, YW Providers, Awards Network 	KPi 6, 7, 8 <ul style="list-style-type: none"> Range of opportunities supported Number of young people participating Numbers of overall awards achieved Celebration events Case studies



Appendix 1: Delivery Plan 2025 to 2027

Expected Change	CLD Outcome	Plan 4 Fife Themes	Actions	Partners	Measures of Success
Young people make a successful transition from school and beyond.	YW1 YW2 YW3 YW4 YW7	<ul style="list-style-type: none"> Opportunities For All 	<ul style="list-style-type: none"> Continued delivery of school-based programmes that support transition Delivery of EASY P programmes across all 7 areas Delivery of early intervention and prevention school-based programmes by CLD staff, based on local need 	<ul style="list-style-type: none"> CLD, Schools, ABE 	KPi 6, 7, 8, 10 <ul style="list-style-type: none"> Range of opportunities supported Number of young people participating Positive destination data Learner and school feedback Case studies
Young people are more responsible Citizens engaged in their communities	YW4 YW5 YW6 YW7	<ul style="list-style-type: none"> Opportunities For All 	<ul style="list-style-type: none"> Support to Members of the Scottish Youth Parliament (MSYPs) Development of forums / opportunities that support young people's engagement decision making, including PB activity 	<ul style="list-style-type: none"> CLD, SYP, Youth Work Partnership and Providers 	KPi 6 <ul style="list-style-type: none"> Range of opportunities supporting youth engagement / youth voice Number of young people participating MSYP feedback Case study

Appendix 1: Delivery Plan 2025 to 2027

Anti-Poverty

Expected Change	CLD Outcome	Plan 4 Fife Themes	Actions	Partners	Measures of Success
Claimants are better able to meet benefits conditions.	AL1 AL2 AL5	<ul style="list-style-type: none"> ● Opportunities For All ● Tackling poverty and preventing crisis 	<ul style="list-style-type: none"> ● Delivery of regular information and guidance sessions. ● Delivery of Job Clubs providing employability support including one to one job search 	<ul style="list-style-type: none"> ● Welfare Support Staff ● Poverty Action Groups ● CLD 	KPi 1 & 9 <ul style="list-style-type: none"> ● Number of welfare support engagements ● Number of people accessing support ● Tracking progress and individual outcomes ● Case studies
Individuals and families are more resilient to crisis and projects are focused around early intervention	CD1 CD4 CD7 AL5 AL7	<ul style="list-style-type: none"> ● Opportunities For All ● Tackling poverty and preventing crisis 	<ul style="list-style-type: none"> ● Delivery of targeted welfare support activity and programmes that build resilience including job clubs, one to ones, family learning activities, and focused learning opportunities (e.g., budgeting, cooking, wellbeing) ● Development of the No Wrong Door (NWD) approach to those accessing support 	<ul style="list-style-type: none"> ● Welfare Support Staff ● Poverty Action Groups ● CLD ● Local Partners 	KPi 1 & 9 <ul style="list-style-type: none"> ● Number of welfare support engagements ● Number of people accessing support ● Tracking progress and individual outcomes ● Case studies ● Feedback from NWD demonstrator project in Cowedenbeath



Appendix 1: Delivery Plan 2025 to 2027

Expected Change	CLD Outcome	Plan 4 Fife Themes	Actions	Partners	Measures of Success
Individuals and communities will have ability to maximise income and increased access to benefits	AL1 AL2 AL5	<ul style="list-style-type: none"> ● Opportunities For All ● Tackling poverty and preventing crisis 	<ul style="list-style-type: none"> ● Benefit Checker Tool to be used with all individual accessing welfare support ● Explore methods of tracing financial gain ● Further training for staff and partners on the Fife Benefit Checker Tool 	<ul style="list-style-type: none"> ● Welfare Support Staff ● Poverty Action Groups ● CLD 	KPi 1 & 9 <ul style="list-style-type: none"> ● Number of welfare support engagements ● Number of people accessing support ● Tracking progress and individual outcomes. including financial gain ● Case studies

Appendix 2: Reference / Support Documents

- Community Learning and Development (CLD) Plans: Guidance 2024-27
- Learning: For All. For Life. A report from the Independent Review of CLD
- National Youth Work Outcomes and Skills Framework
- Adult Learning Strategy for Scotland 2022-27
- The Plan for Fife
- Fife CLD Plan 2021-24
- Fife CLD Bridging Plan 2024-2025
- Education Scotland: Fife CLD Progress Visit Report 2024 and follow up Report 2025
- Fife Voluntary Action Work Plan Progress Report
- Fife Partnership Reports
- Local Child Poverty Report 2024/2025
- Tackling Poverty and Preventing Crisis Delivery Plans
- Community Engagement Improvement Plan
- Fife Gaelic Language Plan
- Area Committee Reports
- Area Delivery Plans and Updates on Progress
- Case Studies and Learner Feedback
- Food 4 Fife Strategy 2024-2029



Appendix 3: CLD Outcomes

Youth Work

- YW1** Young people build their health and wellbeing
- YW2** Young people develop and manage relationships effectively
- YW3** Young people create and apply their learning and describe their skills and achievements
- YW4** Young people participate safely and effectively in groups and teams
- YW5** Young people consider risk, make reasoned decisions and take control
- YW6** Young people grow as active citizens, expressing their voice and enabling change
- YW7** Young people broaden their perspectives through new experiences and thinking

Adult Learning

- AD1** Adult learners develop relationships and networks
- AD2** Adult learners improve health and wellbeing
- AD3** Adult learners improve their communication skills
- AD4** Adult learners develop cultural awareness
- AD5** Adult learners increase their confidence
- AD6** Adult learners improve their language skills
- AD7** Adult learners develop their literacy and numeracy

Community Development

- CD1** Communities are confident, resilient and optimistic for the future
- CD2** Communities manage links within communities and other communities and networks
- CD3** Community members identify their capacities, learning and skills, enhance them and apply them to their own issues
- CD4** Community members form and participate equally, inclusively and effectively in accountable groups
- CD5** Communities consider risk, make reasoned decisions and take control of agendas
- CD6** Communities express their voice and demonstrate commitment to social justice and action to achieve it
- CD7** Community members' perspectives are broadened through new and diverse experiences and connections



Appendix 4. National KPIs

Adult Learning

Descriptor

KPI1 to KPI4 relates to adults involved in adult learning, family learning and capacity building activity through CLD. This may include employability programmes, Literacies, ESOL and personal development work. By awards and wider achievements, we mean those completed.

KPI1 Number of adults engaged in CLD activity

KPI2 Number of adults receiving completed nationally recognised awards through CLD activity (SCQF levelled and awards such as Adult Achievement Award including sectional certificates)

KPI3 Number of adults gaining wider achievement awards, local awards and those not nationally recognised through CLD activity (e.g., Health issues in the Community & Keystone Award)

KPI4 Number of adults engaged in family learning through CLD activity

KPI5 Number of children/young people engaged in family learning through CLD activity

Youth Work

Descriptor

KPI6 to KPI7 and KPI8 relate to children (aged 5 to 9) and young people (aged 10 to 18 – except for those involved in the Duke of Edinburgh Award where the upper age limit is 25). By awards and wider achievement, we mean those completed.

KPI6 a) Number of children engaged in CLD activity

b) Number of young people engaged in CLD activity

KPI7 Number of children receiving completed nationally recognised awards through CLD activity

Number of young people receiving completed national recognised award through CLD activity

Number of young people receiving sectional certificates towards above Awards (sectional certificated only to be included if full award not completed)

KPI8 Number of young people gaining wider achievement awards, local awards and those not nationally recognised, through CLD activity

Appendix 4. National KPIs

Health and Wellbeing

Descriptor

Activity leading to increased confidence / improved self-esteem and other aspects of improved mental health and wellbeing. The exercise is focussed at this stage on numbers - greater impact focus will be achieved through case studies.

KPI 9 Number of adults with improved mental health and wellbeing outcomes through CLD activity

KPI 10 Number of children and young people with improved mental health and wellbeing outcomes through CLD activity.

Community Development

Descriptor

KPI11 includes – for example – resident groups / early years groups / community councils / groups taking forward community asset transfers and those involved in community health checks, community profiling etc. KPI12 includes those involved in representative structures and which reflect the community empowerment act.

KPI 11 Number of community groups receiving capacity building support through CLD activity

KPI 12 Number of adults and young people taking part in influence an engagement activity through CLD – (including community planning / participatory budgeting / local and national consultations / co-production and influencing service design)

Wider Engagement

Descriptor

This category includes adults and young people not yet involved in our more regular activity but rather engaged with at events and in one off or initial meetings.

KPI 13 Number of adults and young people reached and engaged with through one-off promotional events / drop-ins / community events / engagements / etc.





Community Learning & Development Plan 2024-27 2025 Update



Alternative Formats

Information about Fife Council can be made available in large print, braille, audio CD/tape and Gaelic on request by calling 03451 55 55 00



British Sign Language

please text (SMS) 07781 480 185



BT Text Direct:

18001 01592 55 11 91

Language lines

خط هاتف اللغة العربية:

03451 55 55 77

বাংলায় আলাপ করার জন্য টেলিফোন লাইন:

03451 55 55 99

中文語言熱線電話:

03451 55 55 88

Polskojęzyczna linia telefoniczna:

03451 55 55 44

اُردو زبان کے لیے ٹیلیفون نمبر

03451 55 55 66