

Fife Council Management Structure



Ken Gourlay
Chief Executive

Currently vacant
**Executive Director,
Education**



Carol Connolly
**Executive Director,
Place**



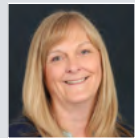
Eileen Rowand
**Executive Director,
Finance & Corporate
Services**



Michael Enston
**Executive Director,
Communities**



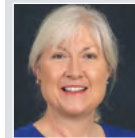
Nicky Connor
**Director of Health
and Social Care
Chief Officer, IJB**



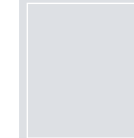
Shelagh McLean
Head of Education
(Directorate Operations &
Childcare Services)



Gordon Mole
Head of Business
& Employability



Heather Honeyman
Assessor



James Ross (from May 2024)
Head of Children, Families
& Justice
Chief Social Work Officer
Acting Head: Christine Moir



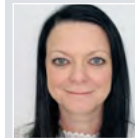
Lynne Garvey
Head of Community Care
Services



Angela Logue
Head of Education
(Early Years & Primary)



John Rodigan
Head of Environment
& Building Services



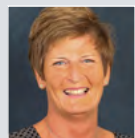
Elaine Muir
Head of Finance



Paul Vaughan
Head of Communities &
Neighbourhoods



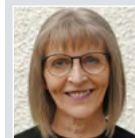
Rona Laskowski
Head of Complex & Critical
Care Services



Maria Lloyd
Head of Education
(Secondary & ASL Services)



Tariq Ditta
Head of Facilities
Management



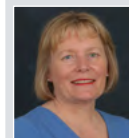
Sharon McKenzie
Head of Human Resources



Diarmuid Cotter
Head of Customer & Online
Services



Lisa Cooper
Head of Primary &
Preventative Care Services



Pam Ewen
Head of Planning



Charlie Anderson
Head of Business
Technology Services (BTS)



John Mills
Head of Housing Services



Fiona McKay
Head of Strategic
Planning, Performance &
Commissioning



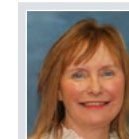
Alan Paul
Head of Property Services



Lindsay Thomson
Head of Legal & Democratic
Services



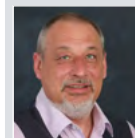
Craig Waddell
Corporate Development
Service Manager



Audrey Valente
Chief Finance Officer



Nigel Kerr
Head of Protective Services



Les Robertson
Head of Revenue
& Commercial Services



Val Millar
Policy & Communications



John Mitchell
Head of Roads &
Transportation