

## Cowdenbeath Area Surveys' Analysis 2022

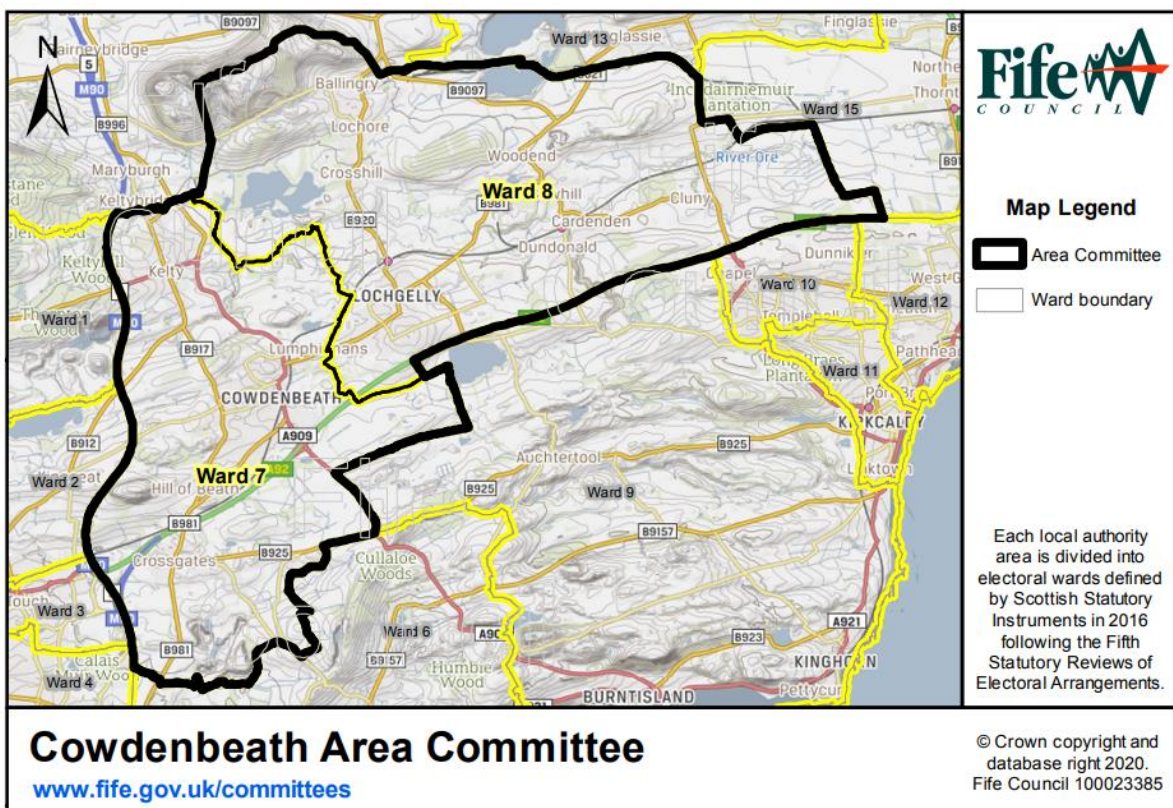
Please click on the survey analysis you are interested in below:

- [Have Your say on the future of Fife's places analysis](#)
- [Disabled persons and place survey analysis](#)
- [Businesses & organisations survey analysis](#)

If you'd like to comment on this analysis email Fife Council at [Fife.Devplan@Fife.gov.uk](mailto:Fife.Devplan@Fife.gov.uk) by **midnight 29th November 2023** or write to:

Policy & Place Team  
Planning Service  
Fife Council  
Fife House West  
North Street  
Glenrothes  
KY75LT

We would appreciate it if you would provide the name of the survey and town/village/location on which you are commenting on in your response, thank you.

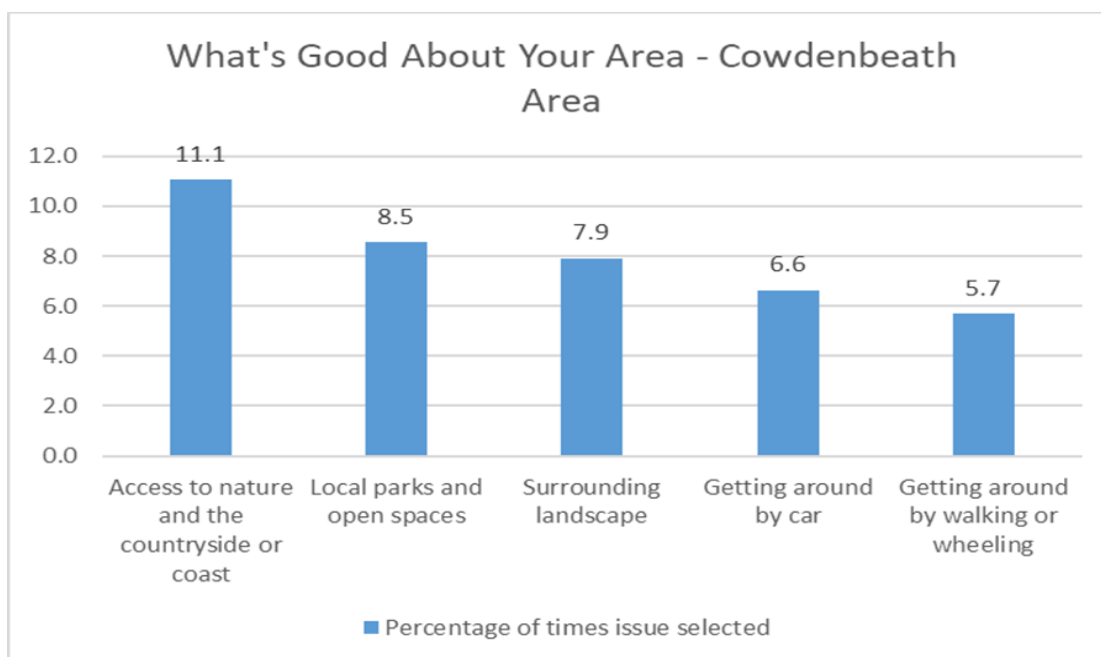


## Have your say on the future of Fife's places survey analysis – Cowdenbeath Area 2022

In 2022 we asked you what you thought was good and bad about where you live and the challenges these places face due to things such as the climate emergency and food resilience. The online survey provided an opportunity for people to have their say in helping shape where they live by highlighting the issues that they think need to be tackled by the next Local Development Plan for Fife.

### 1.0 What's good about your area

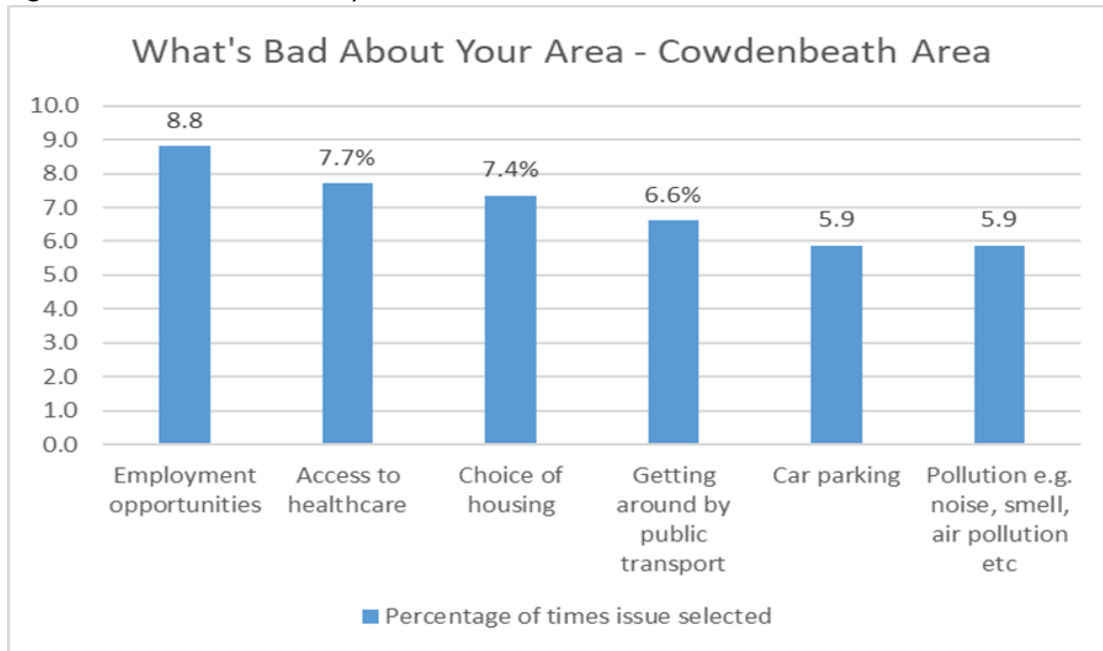
Figure 1 – What's good about your area?



Feedback received highlighted that access to nature and the countryside or coast is considered the best aspect of the Cowdenbeath Area. Local parks/open spaces within the Cowdenbeath area and the surrounding landscape are also considered good. Furthermore, feedback received highlighted that the Cowdenbeath area is both accessible via private car and active transport modes such as walking and wheeling.

## 2.0 What's bad about your area

Figure 2 – What's bad about your area?

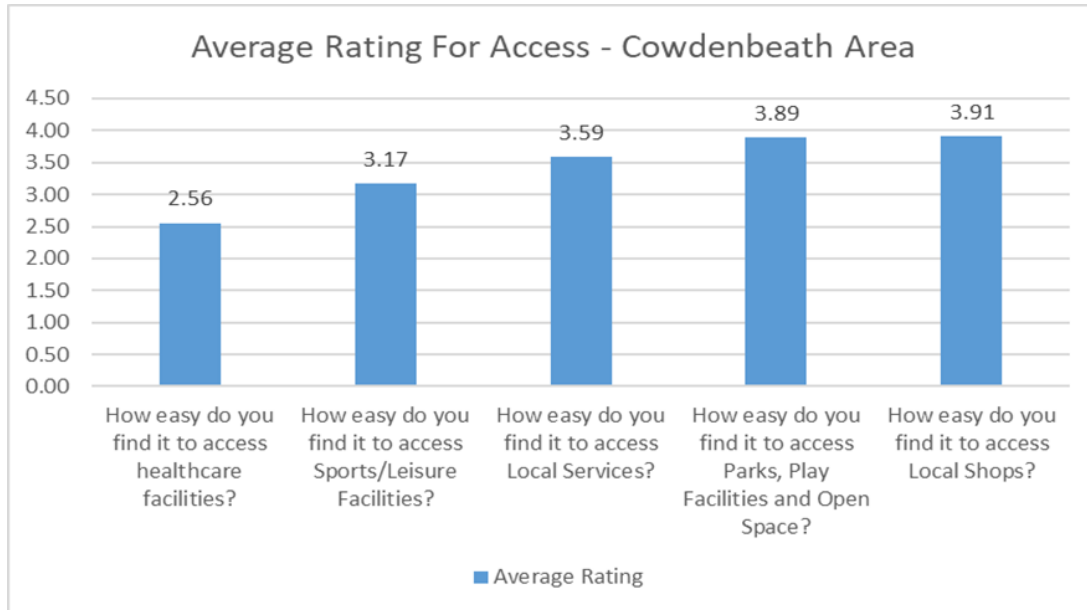


Feedback received highlighted that lack of employment opportunities is considered the key issue within the Cowdenbeath area. Access to healthcare, choice of housing, getting around by public transport, car parking and pollution were also considered poor within the Cowdenbeath area.

## 3.0 Access

We asked you how easy it is for you to access local services and facilities in your area based on how easy it is to travel to the facility or service taking into account things like opening times, ease of getting appointments etc.

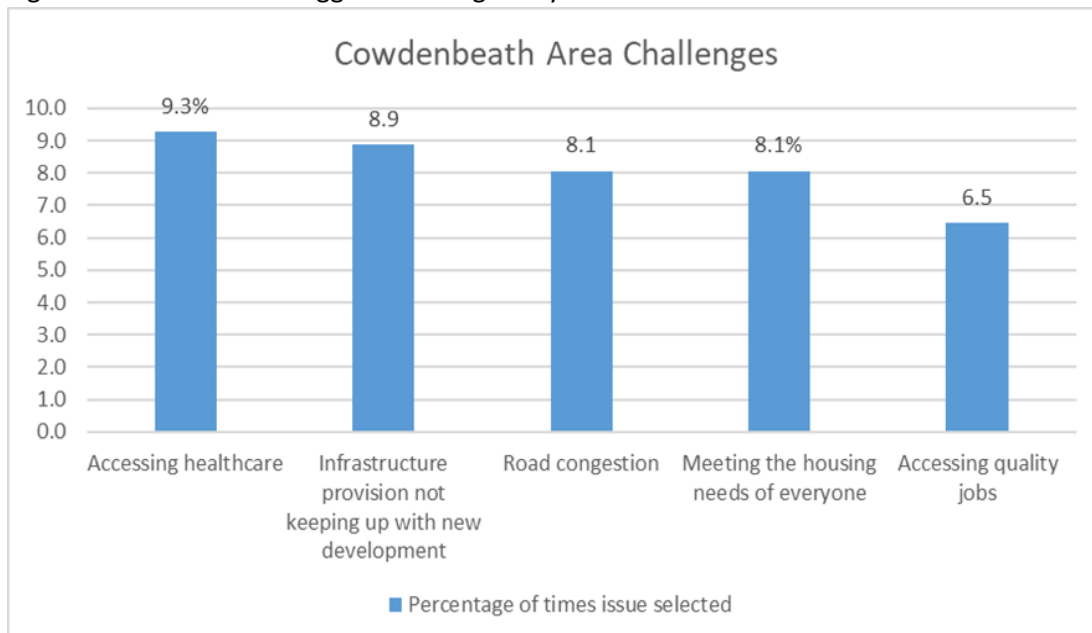
Figure 3 – Access



Feedback highlighted that access to local shops, parks/play facilities/open space, and local services are considered good within the Cowdenbeath area. Access to sports/leisure facilities and healthcare facilities were also considered above average.

#### 4.0 Challenges

Figure 4 – What are the biggest challenges in your area?



Feedback received highlighted that the biggest challenge within the Cowdenbeath area is accessing healthcare. Other challenges facing the Cowdenbeath area include infrastructure provision not

keeping up with new development, road congestion, meeting housing demands, and accessing quality jobs.

## **Fife Local Development Plan - Disabled Persons and Place Online Survey (2022) Analysis – Cowdenbeath Area**

The survey was carried out late 2022 and aimed at finding out about the issues facing disabled persons in relation to where they live and the places they visit. We wanted to know how people find access to things like local shops, sports/leisure facilities, parks etc and what they think can be done to make these places more accessible for everyone. We also wanted to hear about the challenges facing where people live which could be things like the climate emergency or future access to public transport.

### **1.0 Where you live**

#### **Q1 Where do you enjoy going when out and about?**

As with all the areas, most of the places people tend to go are for leisure experiences such as shopping, visiting cafes and outdoor spaces.

#### **Q2 Are there places you would like to go but haven't been able to due to access issues?**

Some sections of the coastal path, albeit that's not in the Cowdenbeath area, are inaccessible for those with disabilities and there are other paths with the same issue such as those in Blairadam Forest.

#### **Q3 How easy do you find it to get around where you live by walking and/or wheeling?**

A common theme appears in area across Fife is in relation to cars being parked on or over paths and Cowdenbeath is no different, making it difficult for some people to navigate, acting as a barrier to everyday life.

Uneven paths and holes in pavements can also cause active travel issues in the area.

#### **Q4 What improvements could be made to improve walking and/or wheeling routes in your area?**

Improving the path network was a central theme in the responses as well as preventing cars from parking on and over pavements.

More handgrips were also suggested as an improvement that could help disabled persons walk and wheel.

#### **Q5 How easy do you find it to access local shops and services? For example, grocers, hairdressers, council offices, libraries, restaurants etc.**

All the responses in relation to access to local shops and services were positive with specific mention of Kelty being good for access to the community centre and local shops.

**Q6 What improvements could be made to improve access to local shops and services?**

It was stated that it would be good if smaller shops could be more accessible for disabled persons but acknowledged that there are limitations due to the age and type of buildings being used.

Poor bus times were also highlighted as a barrier to using local shops and services more.

**Q7 How easy do you find it to access parks, green space and countryside?**

Generally the responses indicate that access to parks, green space and countryside was good.

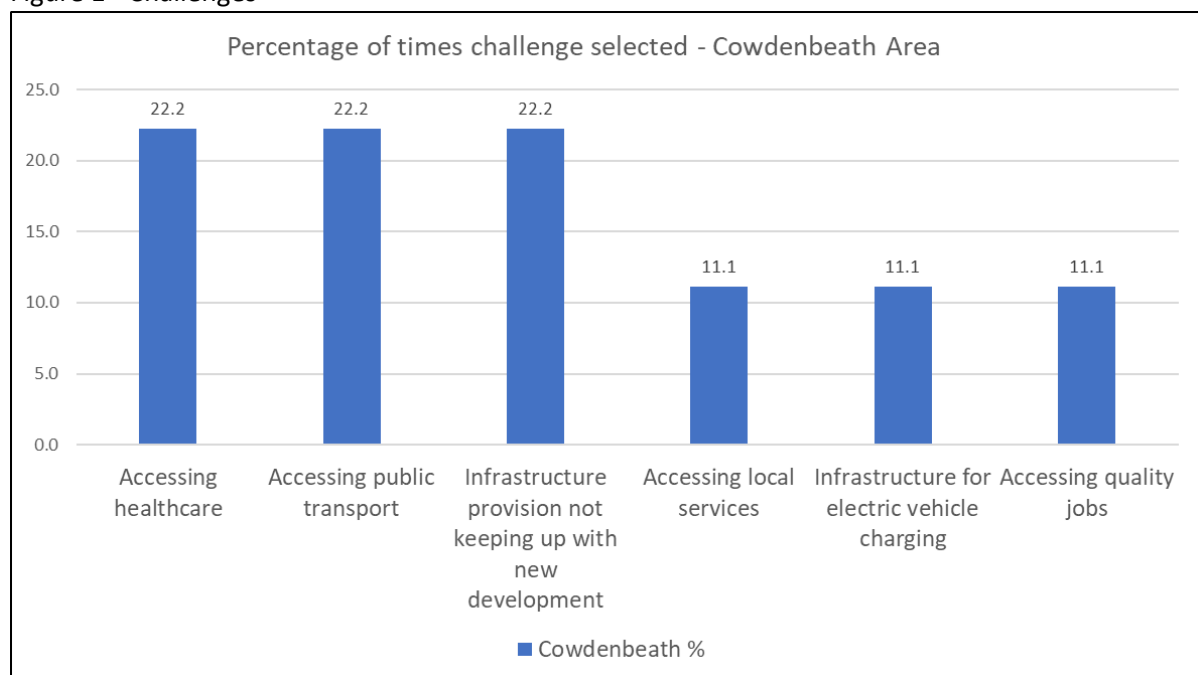
**Q8 What improvements could be made to improve access to parks, green space and countryside?**

It was felt that better and more frequent bus services could help improve access to parks, green space and countryside. The bus routes aren't always near these things.

**2.0 Challenges**

**What do you consider to be the biggest challenges facing where you live?**

Figure 1 - Challenges



Accessing healthcare, accessing public transport, inadequate infrastructure, accessing local services,

the provision of infrastructure for electric vehicle charging and accessing quality jobs are seen as some of the biggest challenges facing the Cowdenbeath area.

**Please comment further on what you consider to be the biggest challenges facing where you live**

N/A

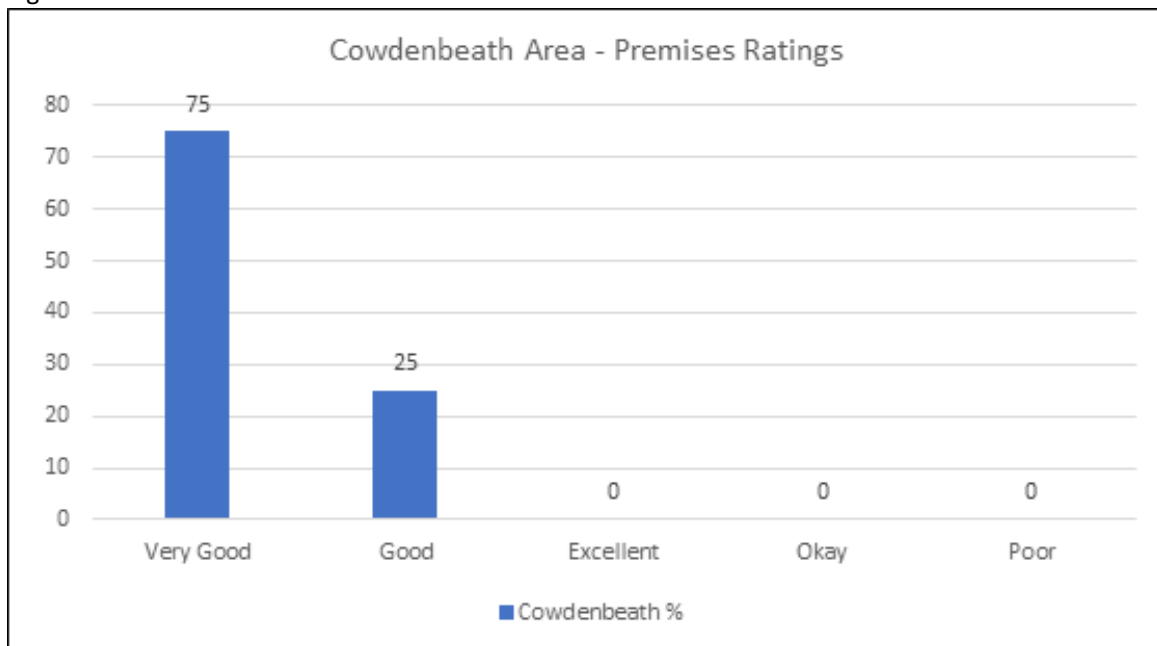


## Fife Local Development Plan - Businesses and Organisations Survey Analysis – Cowdenbeath Area 2022

This consultation was carried out late 2022 and gathered views on important issues like the local economy, modern business properties, availability of employment land to develop and renewable energy. We also asked for views on key future challenges for Fife.

### 1.0 How would you rate your premises?

Figure 1 - Premises



All respondents related their premises either good or very good.

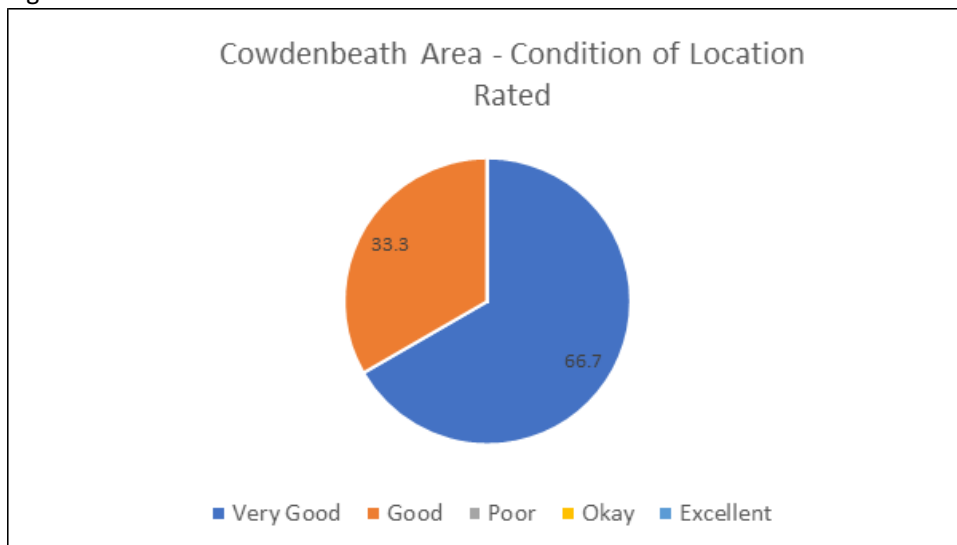
### 2.0 Please tell us what is good and/or bad about your premises.

Accessibility and transport links at Halbeath Interchange are considered good with convenient links to the A92, M90 and central Scotland.

A respondent who operates a farm stated that their business premises is carbon neutral and uses renewable energy for heating.

**3.0 How would you describe the condition of the Industrial Estate/Business Park/town centre/other location your business/organisation is based?**

Figure 2 – Condition of location



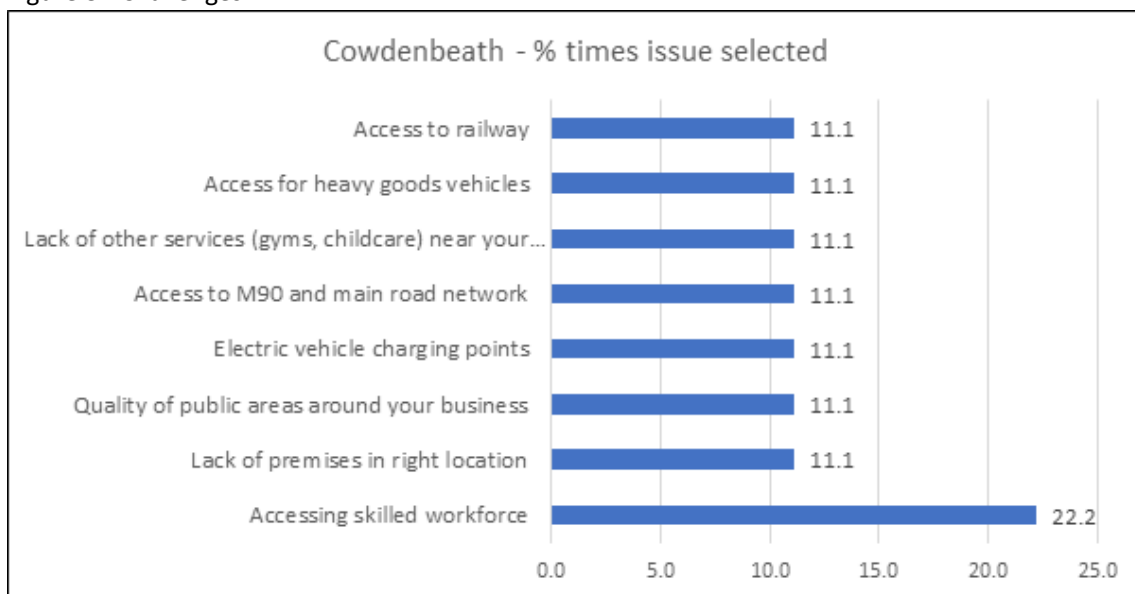
As with premises the condition of the location of the businesses and organisations who responded were rated as good or very good.

**4.0 Please tell us what is good and/or bad about the Industrial Estate/Business Park/town centre/other location your business/organisation is based.**

The rural nature of one business was highlighted as good about where their business is located.

**5.0 What issues do you want the next Local Development Plan to look at?**

Figure 3 - Challenges



Accessing a skilled workforce was by far and away the most important issue (22.2%) that the next local development plan should look at. The remaining issues include addressing the lack of premises in the right location, quality of public areas around employment areas and electric vehicle charging points.

Remove

A lack of ancillary services such as gyms and nurseries were highlighted as another issue.

**6.0 Please tell us about any other issues not listed above that you want the next Local Development Plan to look at.**

It was highlighted that there is considerable pressure on businesses due to High Street decline. Businesses are diversifying their operations and formats, targeting changing consumer needs (types of product, how they are made and from where). Finding new premises on sites competing against major national brands is a significant challenge.