

## Temporary Road Closure

**WHERE ?** Hope Street, Inverkeithing (from its junction with Queen Street to its junction with Glebe Park).

The alternative route for through traffic is via Hope Street, B981, B980, Dunfermline Wynd & Hill Street.

Access for emergency service vehicles and residents will be maintained.

Pedestrian access will be maintained.

**WHEN ?** Nightly between 10pm and 6am from Tuesday 1<sup>st</sup> July 2025 to Thursday 3<sup>rd</sup> July 2025.

**WHY ?** To allow rail bridge inspection works to be carried out in safety.

**WHO ?** Coneworx are responsible for these works and can be contacted as follows:

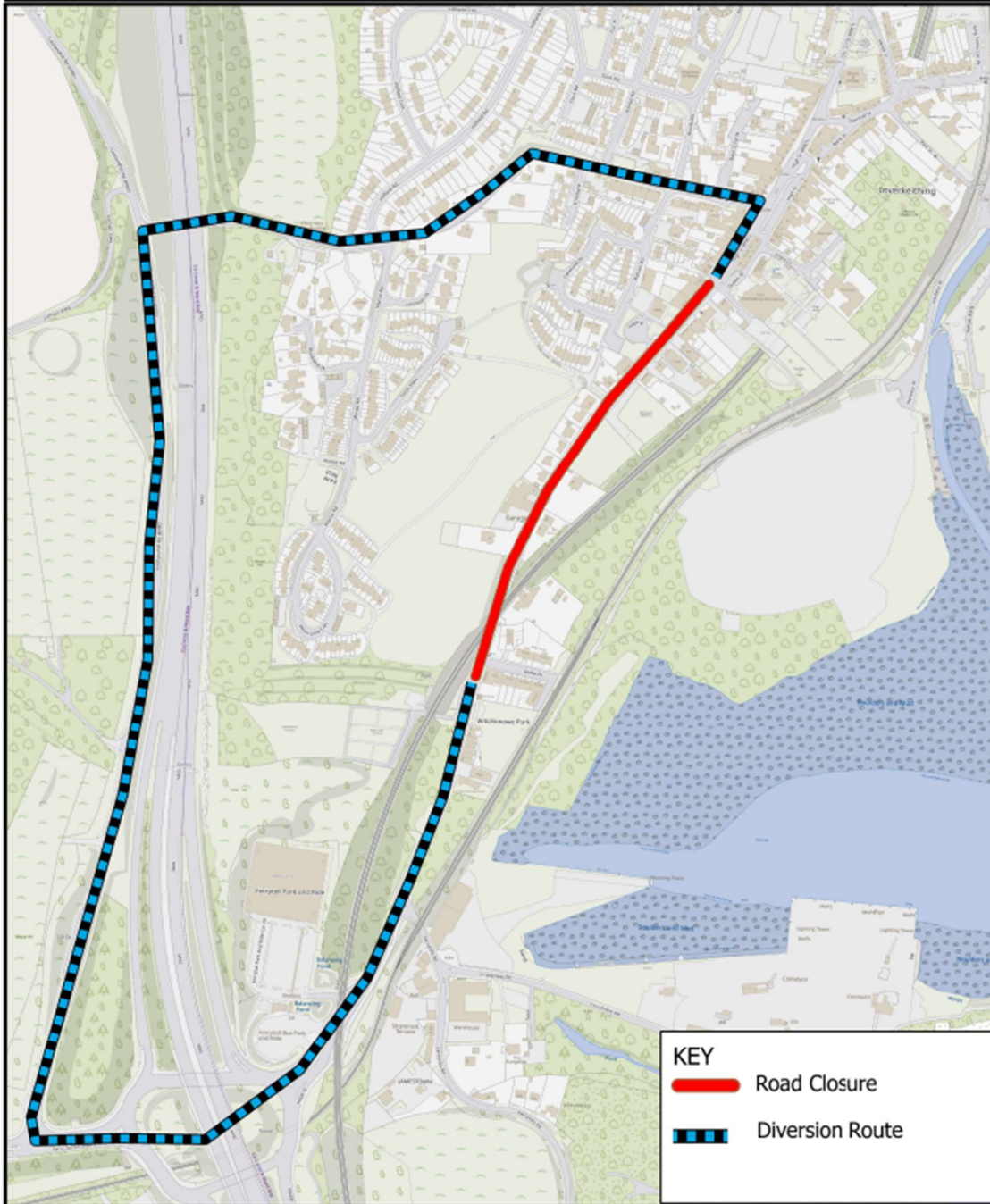
Project Engineer: 01698 862 888



# Hope Street, Inverkeithing

Prepared By: NDD

Service: Roads & Transportation



© Crown copyright and database rights 2025.  
Ordnance Survey 100023385  
Aerial Photography © copyright Getmapping.

Scale 1:5,300

