

an introduction to

▸ **DWA**

Landscape Architects Ltd





# Background

DWA Landscape Architects Limited is a landscape design practice based in Hamilton. Established in 1992 as David Wilson Associates, David Wilson built a respected design and environmental service to a wide range of public and private clients throughout Scotland.

The key principle behind all of the work undertaken by DWA is:

*‘To protect the environment for future generations by ensuring that the needs of this one are met in a sustainable manner’*

David Wilson Associates was established in 1992 as a sole trader with David Wilson (chartered member of the Landscape Institute, CMLI) as Principal.

Over the years, the business has established a respected design and environmental service to a wide range of public and private clients throughout Scotland.



# Background

On the 1st February 2013, the business transformed into a Limited Company called DWA Landscape Architects Ltd. David, along with two of his long standing associates Andy McLatchie (CMLI) and Julie Spence, were Directors of this company, with an equal share in the ownership.

Andy McLatchie has worked with the practice since 2000 and Julie Spence since 2005, and both have for many years played an active role in the running and management of the company.

David subsequently retired in 2017 and the Practice is now run by Andy and Julie but retaining the ethos and approach established by David as a family and community orientated business with a strong social and environmental focus at its heart.

Alongside their roles as Directors Andy and Julie are also senior designers and managers. They are assisted by a skilful, dedicated team of staff. "Along with our professional responsibility to the planet and our commitment to our staff, we aim to achieve a close working relationship with those who commission us, listening, understanding and inspiring our clients to achieve their vision."



# Design Team

Our main resource is the skill and dedication of our design team which has been settled for many years now, bringing a wealth of experience and knowledge to our projects. DWA Landscape Architects have a design team staff of seven members (excluding admin)

- Andy McLatchie (Director) - Landscape Architect MLA- CMLI –
- Julie Spence (Director) – Landscape Manager & Horticultural Specialist Bsc Horticulture – (LMLI)
- Christopher Lockett – Landscape Architect BA (CMLI)
- Malitha Yatiwelle – Landscape Architect MLA (CMLI)
- Abi Kennedy – Landscape Architect MLS CMLI
- Rory Spence – Landscape Technician
- Jenny Parry – Landscape Technician



# Standards and Resources

We also like to ensure that we can hold ourselves to the standards we set for our work and as such the Practice holds a range of memberships and accreditations which are regularly audited and maintained.

- We currently hold a Gold accreditation with Investors In People and were nominated as finalists in the 2020 IIP Awards Gold Category
- We maintain our ISO 9001 accreditation for quality and have done so since 2008.
- We are a registered Living Wage company
- We hold a CHAS Health and Safety standard accreditation
- We are a registered Practice with the Landscape Institute (number 454)

We also feel it is important to ensure that we maintain our competitive edge and therefore make sure that our resources are up to date, using the latest CAD, Design and production software to make sure that the quality of our design work and published information is of the best possible standard.



# Our Work

The majority of our work lies in landscape design from sketch and detailed design to the production of construction drawings and detailed specifications.

DWA also produce landscape management, landscape consultancy and landscape assessments services.

Over the years our projects have taken us right across Scotland and beyond working with a wide range of clients including large scale commercial developers, private home owners, enthusiastic and committed community representatives, and professional public officials.

We have also developed our portfolio working with Local Authorities, with significant projects carried out with North Lanarkshire, South Lanarkshire, Renfrewshire, East Ayrshire, Aberdeenshire and Fife Councils. Landscape Assessment- DWA is regularly involved in landscape assessment in the form of Landscape and Visual Impact Assessments (LVIA) looking at all potential impacts a proposed development would have upon the landscape and surrounding area.



# Examples of Work – Public Spaces

## Cambuslang Main Street

In December 2019 DWA Landscape Architects were commissioned by South Lanarkshire Council to carry out a redesign of Cambuslang Main Street. This was to be community led with Cambuslang Community Council acting as the main point of interface with the town residents. They have been very active within Cambuslang over recent years and have funded and produced several assessments and studies of the town and its centre with a view to improving it for all residents. It was the Community Council who made the successful application for the funding to SLC as part of the Scottish Governments Town Centre Improvement Fund and therefore the project was essentially theirs.

The project took in four sections of the main street and incorporated new natural stone paving, street trees, furniture and a feature public square space. The key philosophy of the design was to declutter the streetscape and also to create a more sustainable project by using locally sources materials and features wherever possible. This includes extensive of Scottish quarried Whinestone and Green Schist.

Due to funding time restrictions plans for the Main Street had to be produced and consulted with the public within three months to a tender stage. This was achieved and a contract awarded. Unfortunately Covid then put the project on hold, but in the summer of 2021 the project began construction and is now nearing completion.





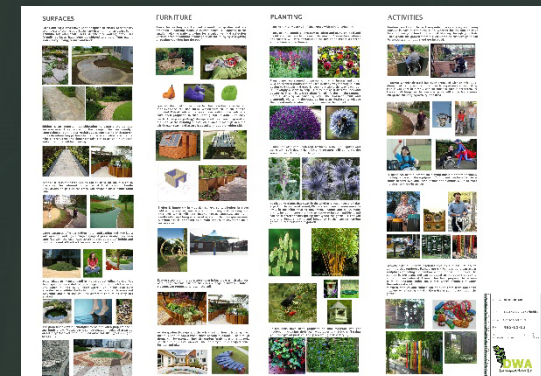
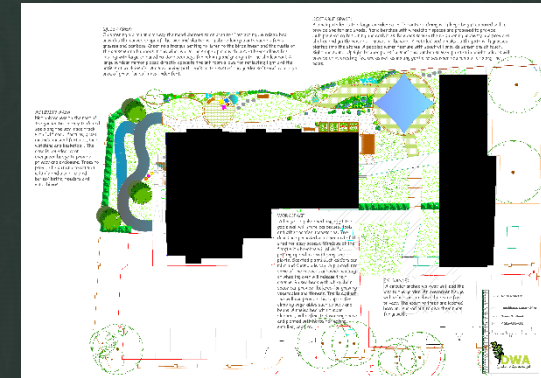
# Examples of Work – Garden Designs

## Sense Scotland Garden Touchbase

Sense Scotland commissioned DWA Ltd. In 2016 to design a sensory garden at TouchBase Lanarkshire, a purpose built and fully accessible base for people with communication support needs, which opened in April 2016.

The purpose of the sketch was to draw up a wish list to support their case for lottery funding from the People's Postcode Lottery, which they were awarded In September that year.

The garden will be a sustainable space with wheelchair accessible paths, raised beds for growing herbs, fruits, vegetables and flowers, an area for sociable activities as well as a quiet area for relaxation and reflection. There will be scented planting, wind chimes and a pebbled water feature to provide a range of sensory experiences.





# Examples of Work – Community Projects

## Carluke High Mill

We have been involved with the project at Carluke High Mill for many years, primarily with Andy's association with the Carluke Development Trust, as a resident of the town. The Mill is an A listed Wind Mill built in 1790 which has been the subject of various campaigns over the years to bring it into community ownership.

In 2018 the community managed to buy the Mill through the Scottish Land Fund on the basis of using the acre of land surrounding it as a community garden and facility – with a longer term plan to restore and convert the mill as an interpretation centre, café and community building. Covid has slowed these plans somewhat but in 2021 great strides have been made in the set up of the garden – with funded training posts for community gardeners in place. This already includes three polytunnels, growing plots, an orchard, secret garden and reception area and bothy.

We have also been passed by the Heritage Lottery Fund to progress to the next detailed funding stage to fund the Mill restoration which is due for submission and review in mid to late 2022.

In the meantime a strong force of community volunteers is growing around the garden with other organisations such as the Carluke Men's Shed and Foodbank now heavily involved in the gardens development.





# Examples of Work – Art Work

## Thomas Chalmers Memorial Garden, Anstruther

Thomas Chalmers was born in Anstruther in 1780. He went on to study at St Andrews University at the age of eleven to study mathematics and later Edinburgh university. He became a preacher at the age of nineteen and went on to found the Free Church of Scotland. He is regarded as one of the preeminent intellects of the nineteenth century and has a place in the hall of Scottish heroes in the Wallace monument.

Anstruther Town Centre Working Group initiated a project to create a memorial garden to Thomas Chalmers in the town and following initial designs DWA were commissioned to take forward the detailed design and subsequent overseeing of the construction phase.

The garden was designed to work with an existing garden area over a series of terraces and create a public space which comprised a memorial sculpture, pulpit feature looking out over the harbour, seating area with natural stone paving and sensory garden planting. This worked within the confines of the existing historical retaining walls on the site integrating new walls, stonework and metalwork railings. A feature piece of Artwork was commissioned and installed at the heart of the garden by Artist Garden Malloy as an integral art of the garden.

The garden opened in July 2013 and is a popular feature and well used by townspeople and visitors alike.

