

Memorial Garden, University of Dundee Botanic Garden

Value: £ Ongoing donation

Client: University of Dundee

Architect: Lorena Weepers - Contractor: R2 Contracts

Landscape Architect: Keith Vernon

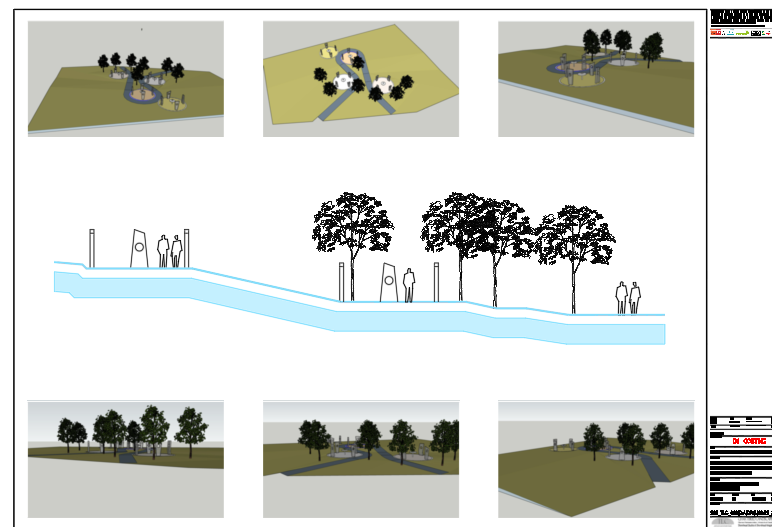
Description: Lorena Weepers, forth year design student at Duncan & Jordanstone College of Art, who's is project is entitled 'Good Grief'.

“At this point I am considering how obsessed we are with making our mark on the world, but with the lack of permanence that is synonymous with the part technology has become to play in our lives, there is a distinct lack of attention brought to the grieving process, particularly in our 21st century lifestyles. Being something we will all experience or another, the grieving process should hold more significance that it currently does for us”.

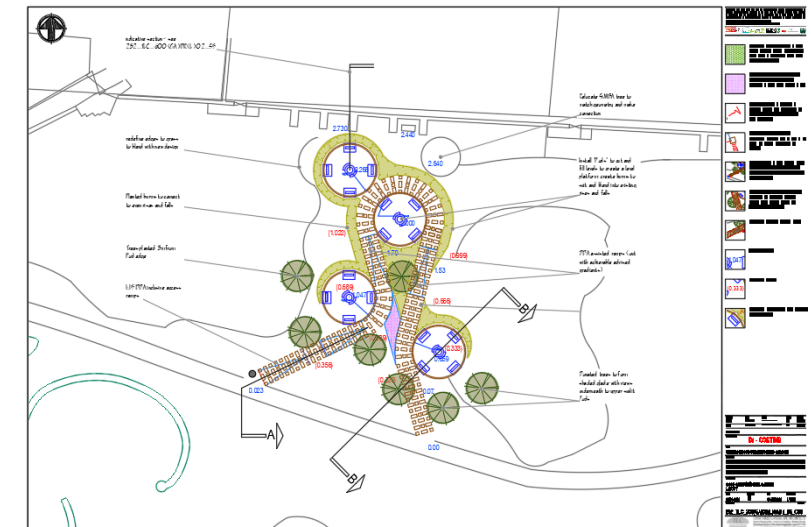
Lorean's project is currently being constructed. TLC's commission is to prepare the construction drawings and resolve challenging ground levels to install this broad faith meets religion memorial garden. The design of the memorial garden shows 4 circular pods each with 4 glass obelisks, where memorial notes are deposited inside each structure. The four pods each reflect the four seasons, where each obelisk reflects the colours and tones of each season.



Artists impression



TLC 3D Construction & Section



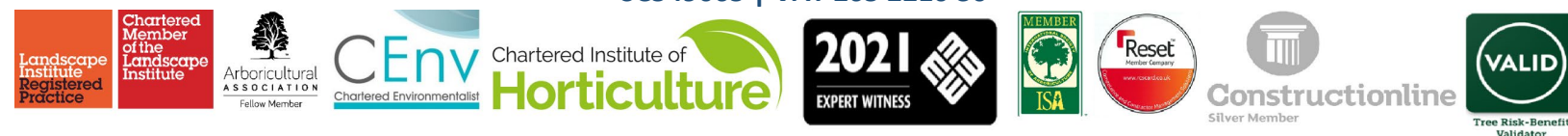
TLC Layout & Levels

Chartered Landscape Architects | Environmental Consultants | Arboricultural Consultants | Planning Technicians

TLC Environmental Limited Shorehead Studios 6 Shorehead Kingskettle Cupar KY15 7PH

S1T: 01337832626 – S2T: 01337830075 | E: info@tlcenvironmental.uk

SC549065 | VAT 265 2210 30



Garden of Reflection & Contemplation

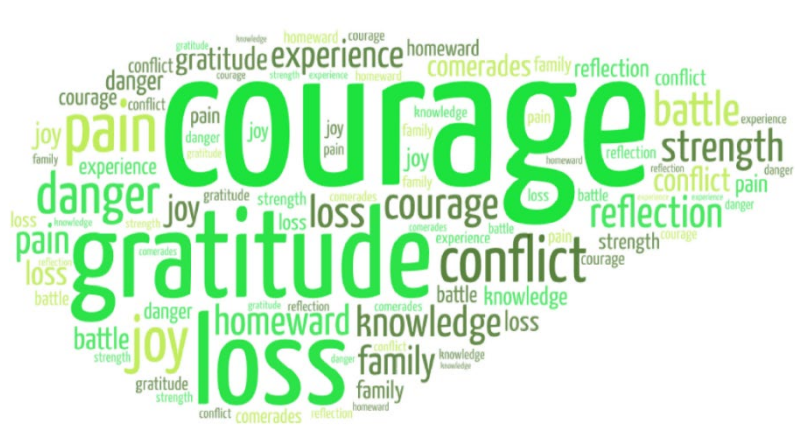
Value: £ Ongoing donation

Client: British Army

Architect: Keith Vernon

Landscape Architect: Keith Vernon

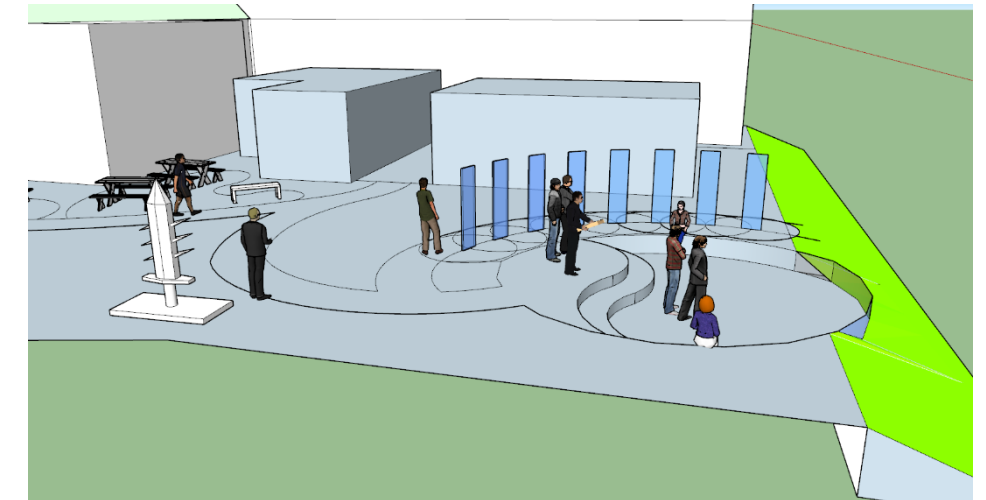
Description: This project cannot be disclosed in any great detail. The brief was to create a garden that embraced Reflection and Contemplation, a garden where soldier could find solace in a place to remember fallen colleagues. The project started with two word images to understand the references behind the garden intention. Memorial garden design is more than the semblances of elements and structures. Its so much more than that. There is a strange 'Alchemy' that takes over during this design process. Each garden must have spaces that connect, places of peace and a sense of belonging, along with the new garden fitting into the wider context of its location.



Reflection



Contemplation



Reverential space

Chartered Landscape Architects | Environmental Consultants | Arboricultural Consultants | Planning Technicians

TLC Environmental Limited Shorehead Studios 6 Shorehead Kingskettle Cupar KY15 7PH

S1T: 01337832626 – S2T: 01337830075 | E: info@tlcenvironmental.uk

SC549065 | VAT 265 2210 30



Innovation HUB, Dundee

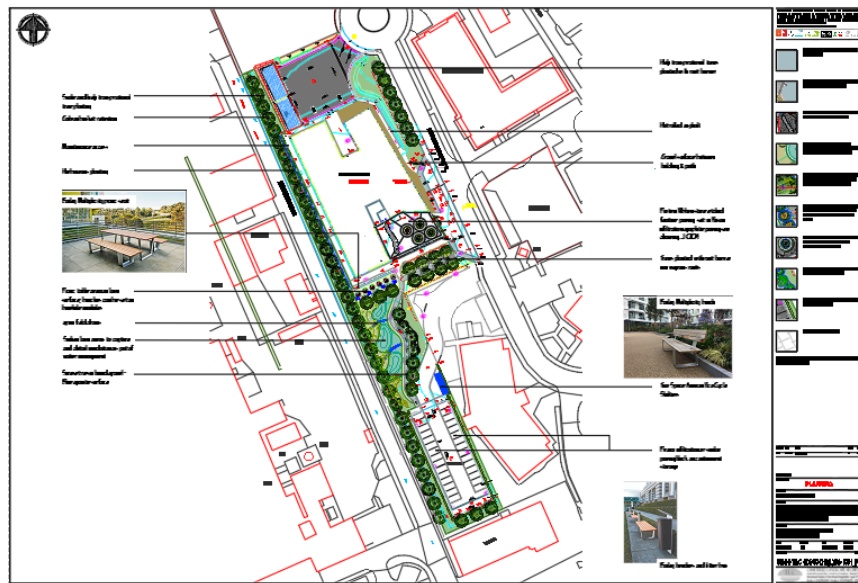
Value: £ 250,000

Client: University of Dundee

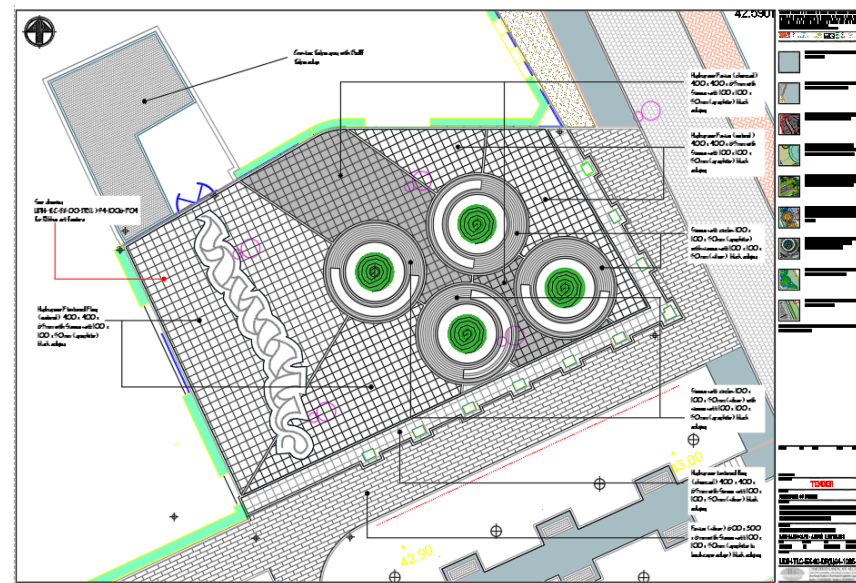
Architect: Oberlanders LLP

Landscape Architect: Keith Vernon

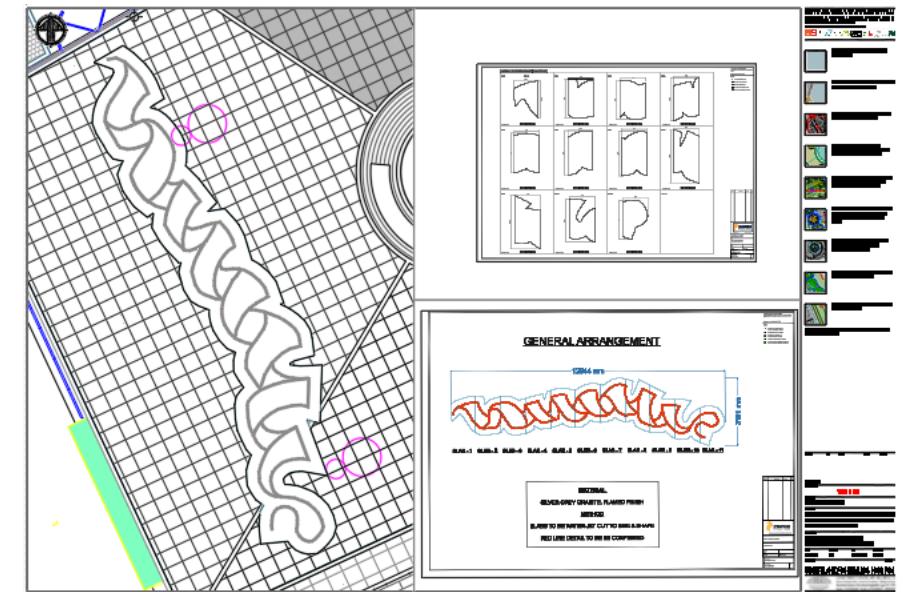
Description: New Protein research building currently at tender stage. The building is called Innovation HUB and will advance research in how proteins can be used to treat viruses. The landscape uses a variety of high transpiration plants to assist in the drainage strategy for the site. Landscape is central to the drainage plan to satisfy Scottish Water and the Planners. The entrance will show a water jet cut white granite Protein ribbon art feature laid into the ground and leading to the entrance reception. The landscape design will provide social spaces in a wildflower garden.



Innovation HUB Landscape



Atrium space



Protein Ribbon

Chartered Landscape Architects | Environmental Consultants | Arboricultural Consultants | Planning Technicians

TLC Environmental Limited Shorehead Studios 6 Shorehead Kingskettle Cupar KY15 7PH

S1T: 01337832626 – S2T: 01337830075 | E: info@tlcenvironmental.uk

SC549065 | VAT 265 2210 30



Airlie Place Dundee

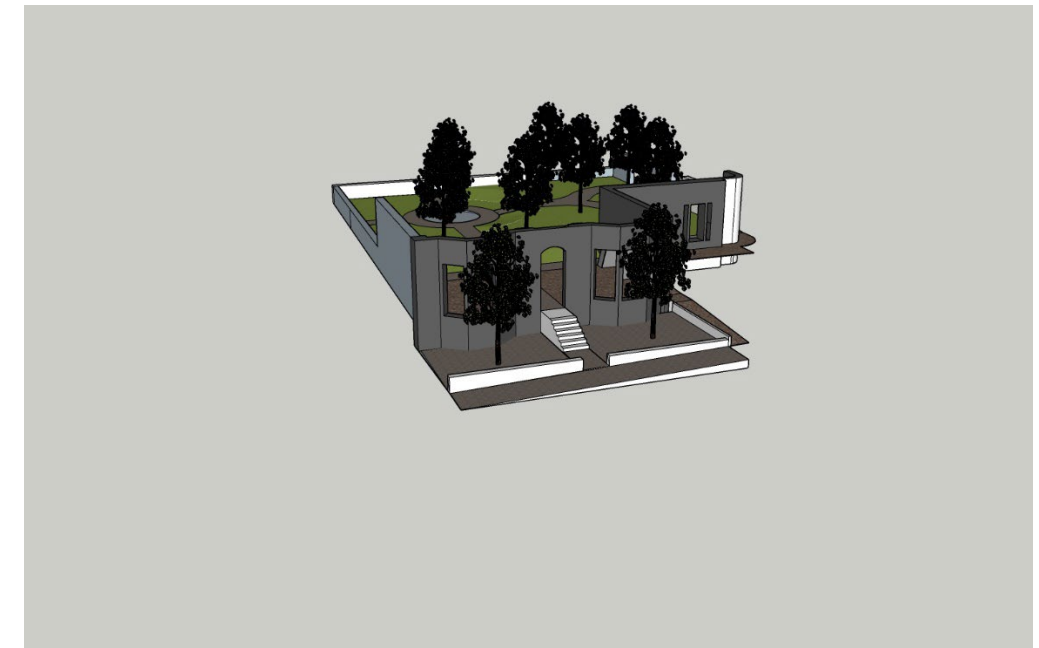
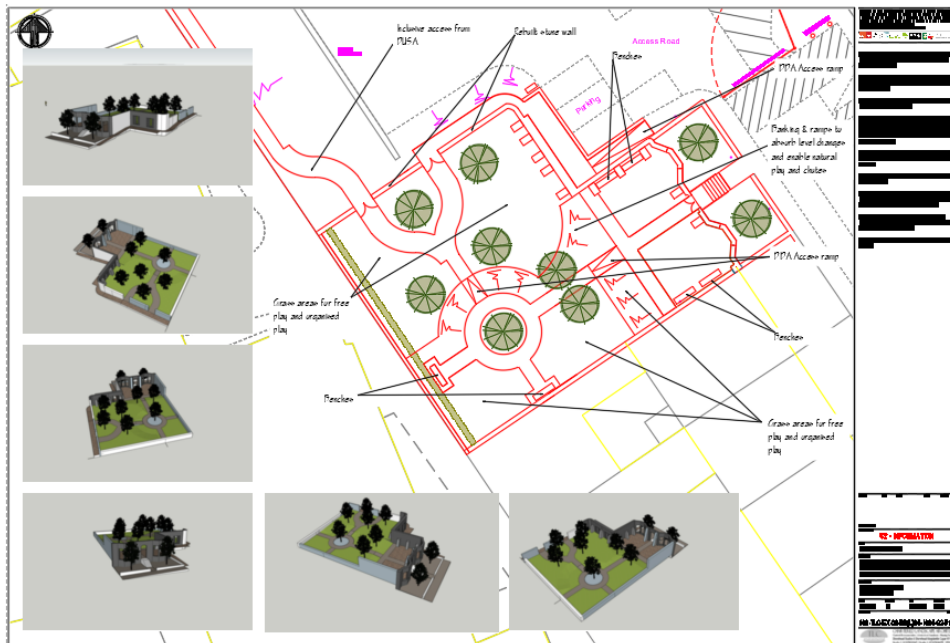
Value: £ 250,000

Client: University of Dundee

Architect: Wellwood Architects

Landscape Architect: Keith Vernon

Description: This project involves the demolition of unsafe tenements to retain the first-floor façade to create a walled garden that will become the University creche. The garden will create new references to Victoriana within the garden pay homage to internal décor and features of the age. The plan is to also future proof the space for further development. These drawings are being submitted to Historic Scotland and Planners for consideration.



Layout

Tenement block

3D Impression

Chartered Landscape Architects | Environmental Consultants | Arboricultural Consultants | Planning Technicians

TLC Environmental Limited Shorehead Studios 6 Shorehead Kingskettle Cupar KY15 7PH

S1T: 01337832626 – S2T: 01337830075 | E: info@tlcenvironmental.uk

SC549065 | VAT 265 2210 30



Upper & Lower Forthviews Kincardine

Value: £TBA

Client: Kex Holdings

Architect: Convery Prenty Architects

Landscape Architect: Keith Vernon

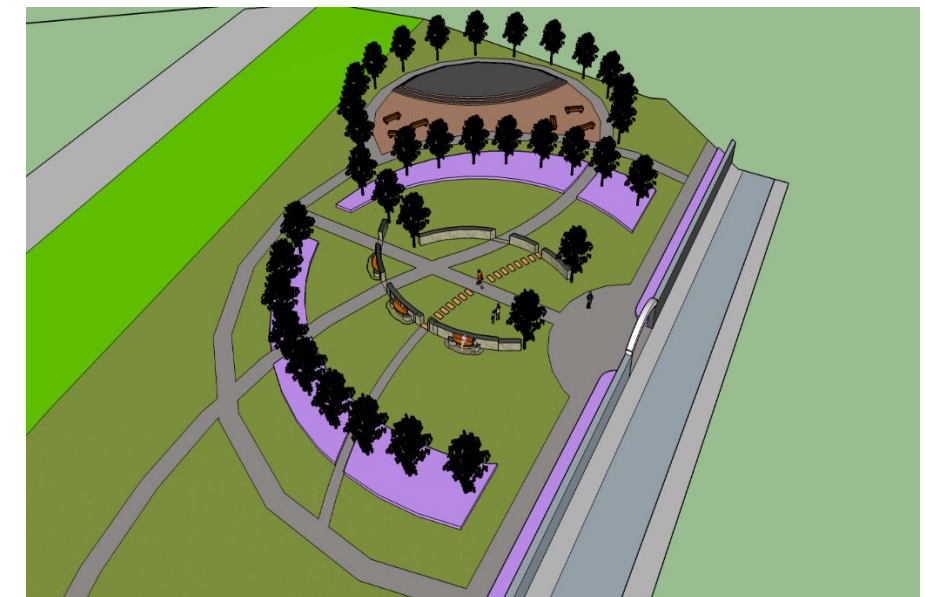
Description: This proposed residential development in Kincardine Fife has a series of landscaped open spaces the reflect are design to present the industrial themes associated with Kincardine & Fife; Agriculture, Ship Building, Naval defence, Rope making Power supply & Mining. These areas will use the remnants of the field walls to assist in creating and developing these themed landscapes.



Master Plan



Ship Building seating areas



Rope type serpentine paths

Chartered Landscape Architects | Chartered Environmentalist | Arboricultural Consultants | Planning Technicians

TLC Environmental Limited Shorehead Studio 6 Shorehead Kingskettle Cupar KY15 7PH

T: 01337832626 - 01337830075 | E: info@tlccenvironmental.uk

SC549065 | VAT 265 2210 30



Inverewe Garden, Garden on the Edge

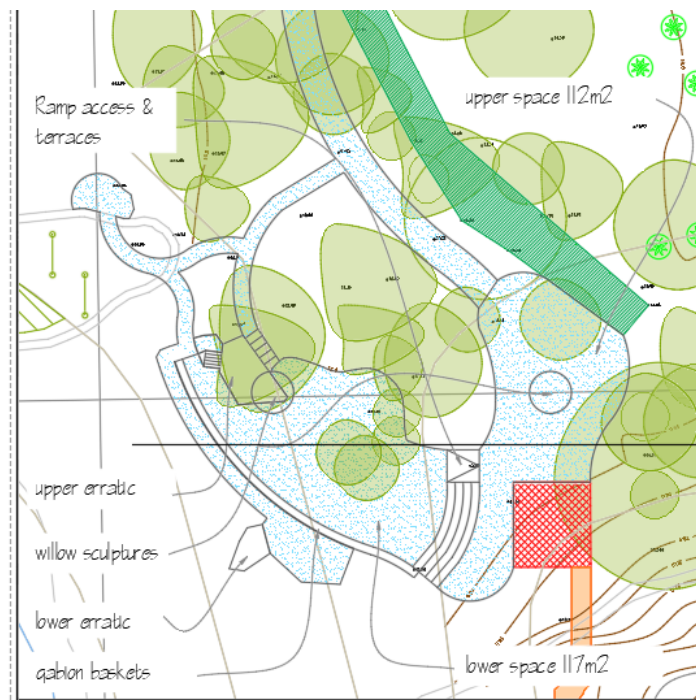
Value: £1M

Client: National Trust for Scotland

Architect: Denizen Works - Contractor: Covanburn

Landscape Architect: Keith Vernon

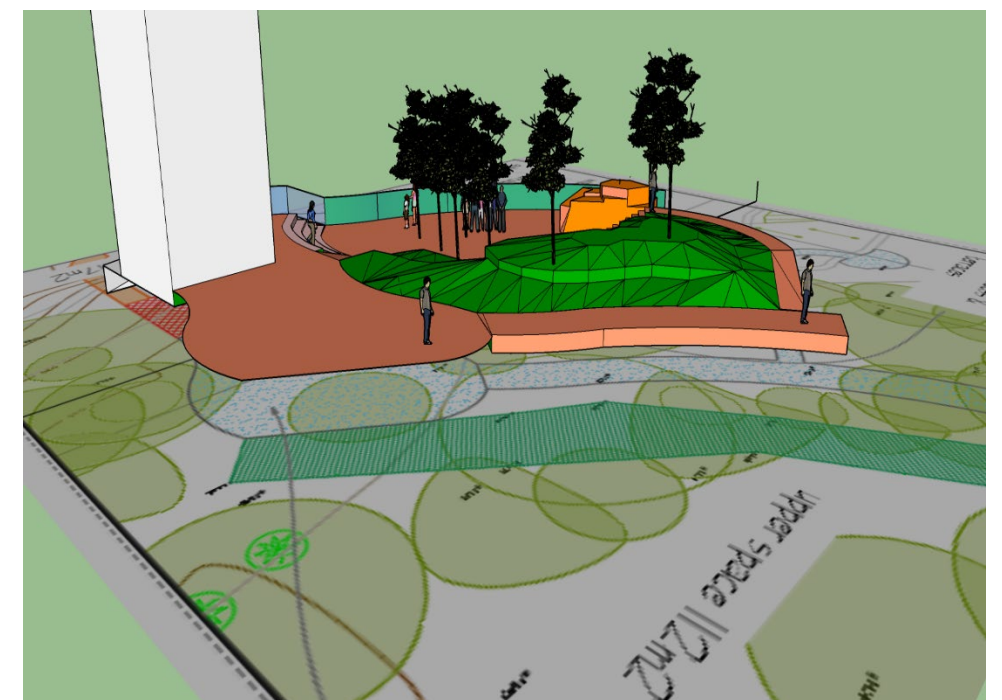
Description: Preparation of landscape design proposals for the garden areas at the base of the Tower development at Inverewe Garden. The Tower project is a brave a bold architectural project to build at 20m tall tower at the most extreme edge of Inverewe. The Tower will be situated within the shelterbelt where 120mph are common. The overall scheme will interpret the ability to change the environs of the garden through planting. The Wind garden will describe and present new planting types to meet the challenges of Climate Change. The Tower and new garden will form a series of event spaces within a global visitor attraction.



Stage C Plans



Stage C 3D images



Chartered Landscape Architects | Environmental Consultants | Arboricultural Consultants | Planning Technicians

TLC Environmental Limited Shorehead Studios 6 Shorehead Kingskettle Cupar KY15 7PH

S1T: 01337832626 – S2T: 01337830075 | E: info@tlcenvironmental.uk

SC549065 | VAT 265 2210 30



Westfield Recycling Centre, Cumbernauld

Value: £1.3M

Client: North Lanarkshire Council Waste Management Services

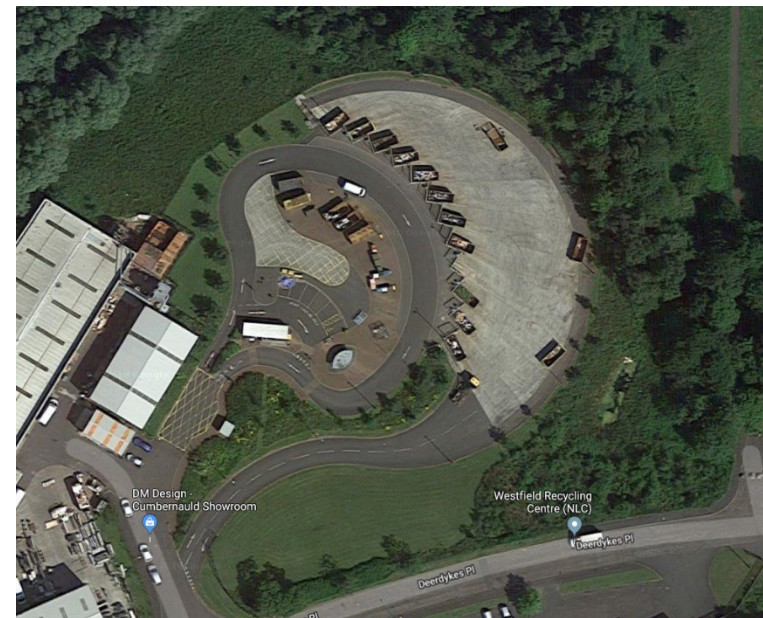
Contractor: RJ McLeod Limited

Designers & Project Managers: Keith Vernon

Description: The design philosophy was to create a recycling centre that defied the usual engineered solution, by developing the scheme around the landform and using references to the environment and nature, by introducing smooth flowing curves, native trees and wildflowers. This not only reduces the need for intensive grounds maintenance but also creates a sense of place, even though it is only a recycling centre. The erratic boulders found on site were recycled from 12,000 years ago into the banking as features.



GA Plan



As built



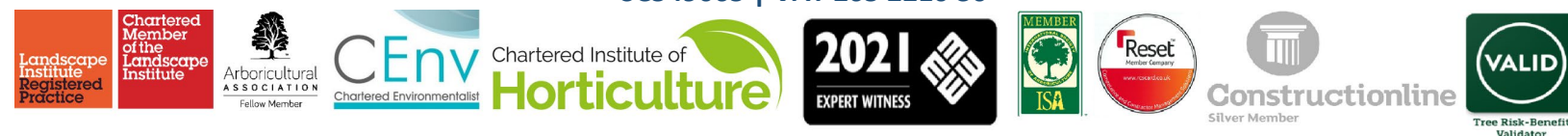
View of Skip Area & Infiltration Paving

Chartered Landscape Architects | Environmental Consultants | Arboricultural Consultants | Planning Technicians

TLC Environmental Limited Shorehead Studios 6 Shorehead Kingskettle Cupar KY15 7PH

S1T: 01337832626 – S2T: 01337830075 | E: info@tlcenvironmental.uk

SC549065 | VAT 265 2210 30



Glenboig Village Park, Glenboig

Value: £856k

Client: North Lanarkshire Council/ Glenboig Village Park Community Group

Contractor: Landscape & Contracts Limited

Designer & Project Manager: Keith Vernon

Description: The development of this park for the local community had to take into consideration contaminated and structurally poor land. The project involved an engineering solution to introduce armour stone and geo-grid rafts to support the zoned play equipment areas, and the removal of the contaminated soil to a registered landfill following WAC testing. The contamination was due to the waste produced by the Union Glenboig Fire Clay Company, which occupied the site for over 100 years. The sculpture was designed to represent the chimney stacks that once dominated the landscape in the tree line in the background of the photo.



Main Plan



Public Sculpture



Union Glenboig Fire Clay Company circa 1955

Chartered Landscape Architects | Environmental Consultants | Arboricultural Consultants | Planning Technicians

TLC Environmental Limited Shorehead Studios 6 Shorehead Kingskettle Cupar KY15 7PH

S1T: 01337832626 – S2T: 01337830075 | E: info@tlcenvironmental.uk

SC549065 | VAT 265 2210 30



Lochview Golf Course, Coatbridge

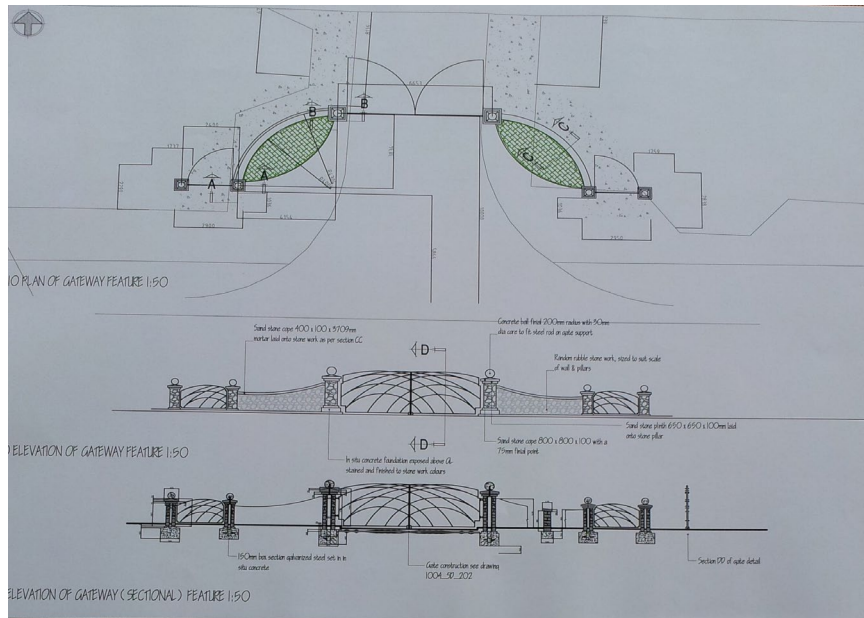
Value: £65k

Client: NL Leisure

Contractor: Covanburn Contracts

Designer: Keith Vernon

Description: This bespoke entrance feature is the sense of arrival you get when you come to the West of Scotland Golf Academy. The design incorporates red sand stone and ashlar pillars and bespoke designed gates that show the trajectory of a golf ball and golf club heads for bolts.



Main Plan



Red sandstone recycled from Darvel Co-op buildings



Golf club bolt

Chartered Landscape Architects | Environmental Consultants | Arboricultural Consultants | Planning Technicians

TLC Environmental Limited Shorehead Studios 6 Shorehead Kingskettle Cupar KY15 7PH

S1T: 01337832626 – S2T: 01337830075 | E: info@tlcenvironmental.uk

SC549065 | VAT 265 2210 30



Church Street, Coatbridge

Value: £240k

Client: North Lanarkshire Council Planning Department

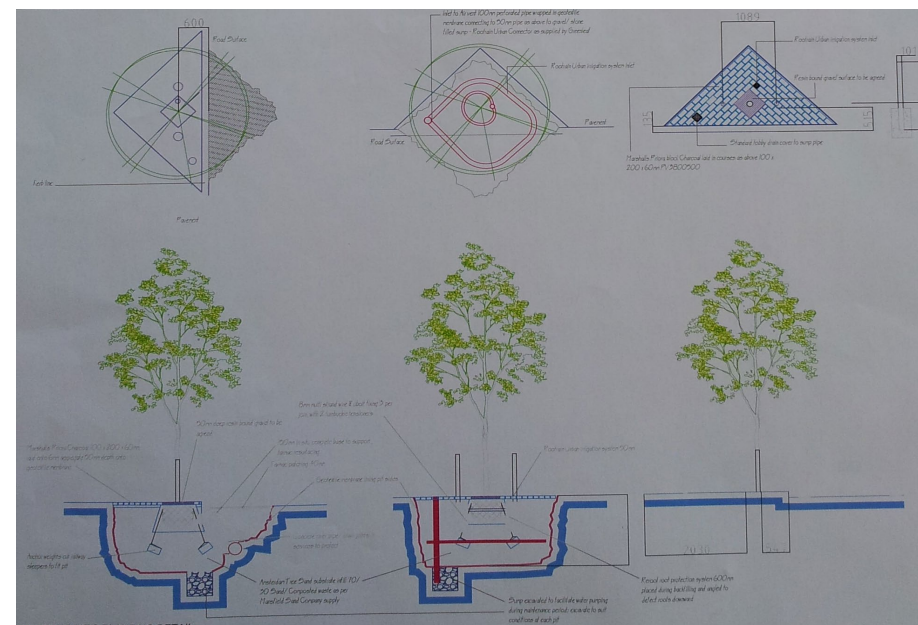
Contractor: Landscape & Contracts

Designer & Project Manager: Keith Vernon

Description: This scheme involved replanting of poor street trees through excavating within the road way to created 6m³ planting pits using Amsterdam tree sand. This is the optimum requirement to successfully grow a tree in a street. The planting used ventilation and watering systems and the incorporation of mycorrhiza to support the development of the **Fraxinus ornus** (Manna Ash), which has a known mycorrhizal association.



Main Plan



Planting detail



Staking detail

Chartered Landscape Architects | Environmental Consultants | Arboricultural Consultants | Planning Technicians

TLC Environmental Limited Shorehead Studios 6 Shorehead Kingskettle Cupar KY15 7PH

S1T: 01337832626 – S2T: 01337830075 | E: info@tlcenvironmental.uk

SC549065 | VAT 265 2210 30



Central Way, Cumbernauld

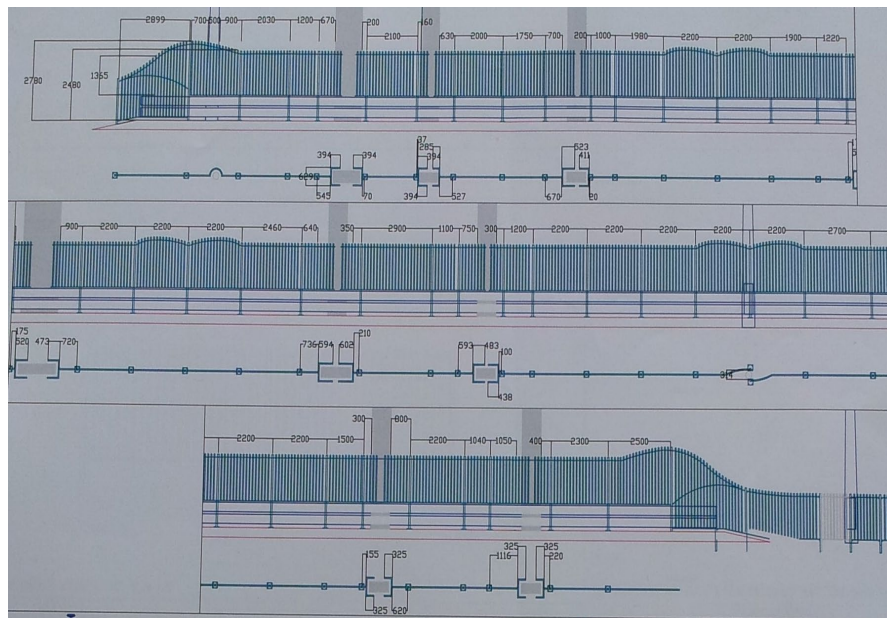
Value: £450k

Client: North Lanarkshire Council Roads Department

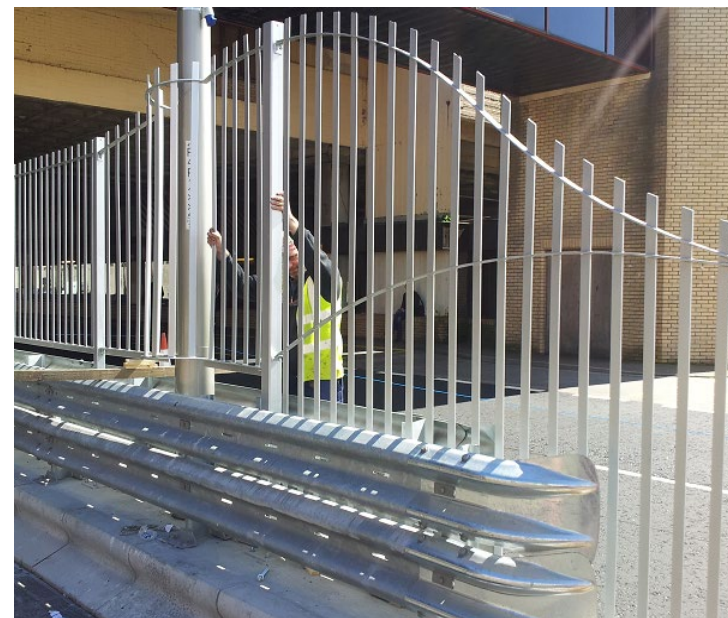
Contractor: RJ McLeod/ Hay & Anderson

Designer & Project Manager Keith Vernon

Description: The image shows the bespoke railing design for the central reserve at Cumbernauld Bus station. The idea was to introduce something that would catch the eye at this uninspired area, by framing the concourse columns and creating 'wave' type patterns. The railings are set into NAL units for ease of repair, set into a drainage kerb resin bounds gravel central reserve.



Main Plan



Railing installation into NAL units



Resin bound gravel & drainage kerb

Chartered Landscape Architects | Environmental Consultants | Arboricultural Consultants | Planning Technicians

TLC Environmental Limited Shorehead Studios 6 Shorehead Kingskettle Cupar KY15 7PH

S1T: 01337832626 – S2T: 01337830075 | E: info@tlcenvironmental.uk

SC549065 | VAT 265 2210 30



North Calder Heritage Trail, Coatbridge

Value: £250k

Client: North Lanarkshire Council Planning Department

Contractor: Covanburn Contracts

Designer & Project Manager Keith Vernon

Description: This project incorporated public realm natural stone paving works, traffic management and a compass feature. The compass feature used the three national and regional tourist routes of the Monkland Canal, North Calder Heritage Trail and the National Cycle way 75.



Compass feature



Paving, Bollards & Traffic calming

Chartered Landscape Architects | Environmental Consultants | Arboricultural Consultants | Planning Technicians

TLC Environmental Limited Shorehead Studios 6 Shorehead Kingskettle Cupar KY15 7PH

S1T: 01337832626 – S2T: 01337830075 | E: info@tlcenvironmental.uk

SC549065 | VAT 265 2210 30



Community Safety, Motherwell

Value: £25k

Client: North Lanarkshire Council Regeneration Department

Contractor: BLC Scotland Kilsyth

Designer & Project Manager Keith Vernon

Description: Part of a Scottish Government pilot into community consultation, where a budget was made available to address issues about community safety. Where the use of quad bikes and motorcycles was the main concern of the Forgewood community. Existing chicane barriers were retro fitted with light steel galvanised drums that provide access for pedestrian and double buggies only. A quirky design solution applied at 14 locations across Forgewood.



Before



After

Chartered Landscape Architects | Environmental Consultants | Arboricultural Consultants | Planning Technicians

TLC Environmental Limited Shorehead Studios 6 Shorehead Kingskettle Cupar KY15 7PH

S1T: 01337832626 – S2T: 01337830075 | E: info@tlcenvironmental.uk

SC549065 | VAT 265 2210 30



BS5837:2012 Tree Survey

Value: n/a

Client: Various

Contractor: n/a

Designer & Project Manager Keith Vernon

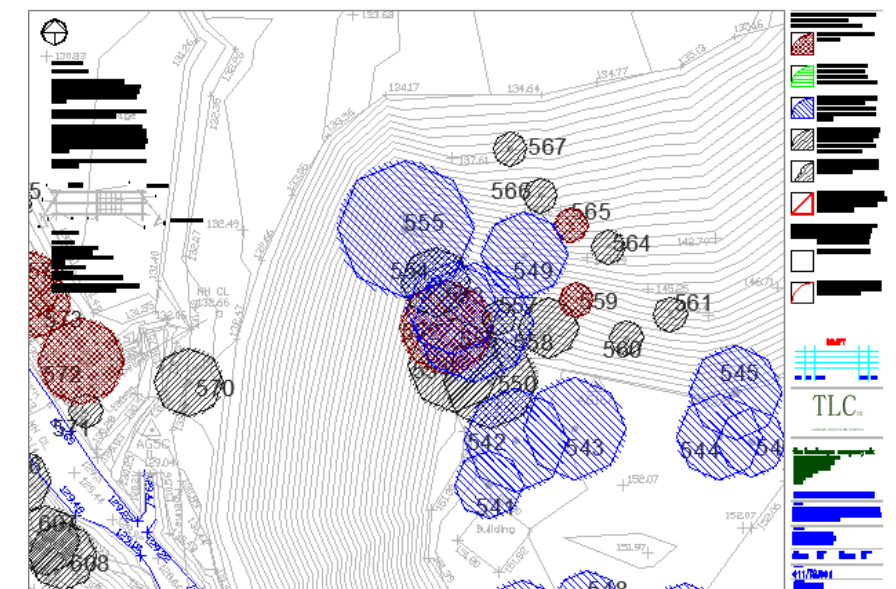
Preparation of tree surveys to BS5837:2012 Trees in relations to design, demolition and construction – Recommendations. This standard set out a frame work for the planning, design and development of a site for new use, where trees are an integral part of the site and can maintain a harmonious balance with the new development and the existing site environs. Tree Surveys to this standard are being increasing requested by Planning Authorities. The process includes categorising of the trees based on landscape and arboricultural value, hazard and risk to existing and future site users, and the assessment of the trees being able to be safely preserved within the new development. This includes Arboricultural Impact Assessments, Arboricultural Method Statements and Shade Analysis Reports, along with the tree survey schedule and Tree Survey and Tree Protection drawings.



Tree Protection Plan



Shade Analysis



Tree Survey Drawing

Chartered Landscape Architects | Environmental Consultants | Arboricultural Consultants | Planning Technicians

TLC Environmental Limited Shorehead Studios 6 Shorehead Kingskettle Cupar KY15 7PH

S1T: 01337832626 – S2T: 01337830075 | E: info@tlcenvironmental.uk

SC549065 | VAT 265 2210 30



Ochertyre Pinetum (Designed Landscape & Veteran tree collection).

Clients: RTS Forestry. Brian Souter

Designer & Project Manager Keith Vernon

Working in partnership with estate managers and consultants to recreate the original landscape of the pleasure grounds and Pinetum to re-establish the rides (4m wider paths), removal of 30 years of invading Rhododendron and Sycamore, to rediscover the 200 year old Pinetum. We carried out the tree survey and developed the management plan for the collection, as well as carrying out the identification and labelling of the trees.



Pseudotsuga menziesii



Picea brachytyla



Pinus strobus

Chartered Landscape Architects | Environmental Consultants | Arboricultural Consultants | Planning Technicians

TLC Environmental Limited Shorehead Studios 6 Shorehead Kingskettle Cupar KY15 7PH

S1T: 01337832626 – S2T: 01337830075 | E: info@tlcenvironmental.uk

SC549065 | VAT 265 2210 30



Historic Designed Landscape

Clients: Glamis Castle, Earl of Strathmore. Gallery Mr & Mrs Simson. Kincardine Castle, Mr & Mrs McNeil.

Designer & Project Manager Keith Vernon

Glamis Castle: Carried out BS5837:2005 tree survey of the trees adjacent the new Queen Mother Entrance gates and new roadway. This recommended raising the roadway above tree roots to ensure on going healthy development of the retained trees. Preparation of concept designs for Royal approval for the Princess Margaret Memorial and Earl of Strathmore Fountain

Gallery: Garden. Design and development of the 16th century walled garden to create a series of garden 'rooms'. The central axis path links to a 'reception' area behind and within a privet and yew columned hedge, leading to the river garden gates. Off set side paths lead into the themed 'rooms' and sunken gardens.

Kincardine Castle: Involved in the initial design and work to recover the lost landscape from decades of neglect. Assisted in discovering lost artefacts and identified the components of the living asset, principally an impressive collection of 200 year old conifers distributed around the estate and within the valley of the Ruthven water, and the impressive 1000 year old Yew, once used as the Justice Tree, where 9 of the Graham family were hanged.

Glamis Castle

Gallery Montrose

Kincardine Castle Estate

Chartered Landscape Architects | Environmental Consultants | Arboricultural Consultants | Planning Technicians

TLC Environmental Limited Shorehead Studios 6 Shorehead Kingskettle Cupar KY15 7PH

S1T: 01337832626 – S2T: 01337830075 | E: info@tlcenvironmental.uk

SC549065 | VAT 265 2210 30



Catrine Weir Restoration

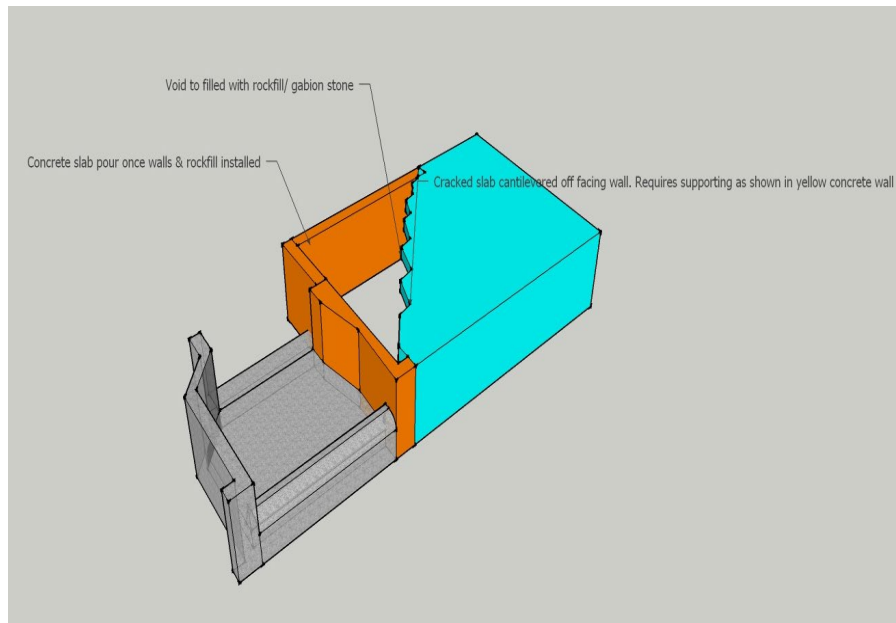
Value: £950k

Client: Catrine Weir Community Trust

Contractor: Covanburn Contracts Limited

Engineering drawings & Environmental support: Keith Vernon

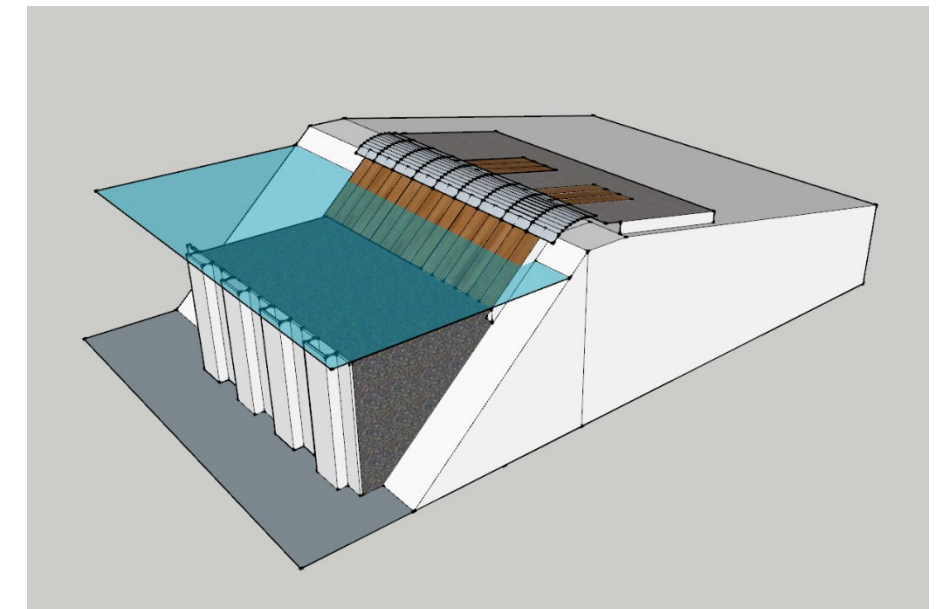
Description: Restoration of the Scheduled Ancient Monument. Installation of sheet pile coffer dam, construction of precast concrete weir units, installation of new timber Ekki plank weir face, entombment of the weir apron with 300m³ of pumped lime concrete, installation of ground anchors and Grundomat piles. Management of the ecological and environmental impacts, liaison with the Ayrshire Rivers Authority, SEPA, Historic Scotland and the appointment of an Archaeologist to oversee the main works within in the SAM through the Written Scheme of Investigation.



Weir planning



Weir Construction



Apron and Weir head Units

Chartered Landscape Architects | Environmental Consultants | Arboricultural Consultants | Planning Technicians

TLC Environmental Limited Shorehead Studios 6 Shorehead Kingskettle Cupar KY15 7PH

S1T: 01337832626 – S2T: 01337830075 | E: info@tlcenvironmental.uk

SC549065 | VAT 265 2210 30



Related Support Services

Value:

Client: Developers & Architects

Environmental & Habitat Surveys

Description: Preparation of Bird Nest Surveys in line with SNH Guidance to determine the presence of nesting birds in relation to tree removal. Phase 1 Habitat surveys to establish the presence species which will require the implementation of a mitigation strategy to facilitate a development. Bird Hazard Management Plans a planning requirement within 13km of an Aerodrome/ Airport. These services are supported by all other services offered and integrated within a design package as required.



Bird Nest Surveys



Habitat Surveys



Bird Hazard Management Plans

Chartered Landscape Architects | Environmental Consultants | Arboricultural Consultants | Planning Technicians

TLC Environmental Limited Shorehead Studios 6 Shorehead Kingskettle Cupar KY15 7PH

S1T: 01337832626 – S2T: 01337830075 | E: info@tlcenvironmental.uk

SC549065 | VAT 265 2210 30



Dundee Botanic Garden

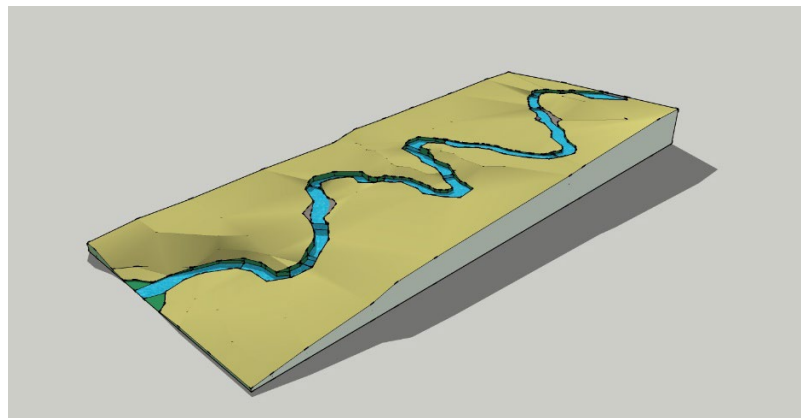
Value: £200k

Client: Dundee Botanic Garden

Contractor: TBC

Stream Design

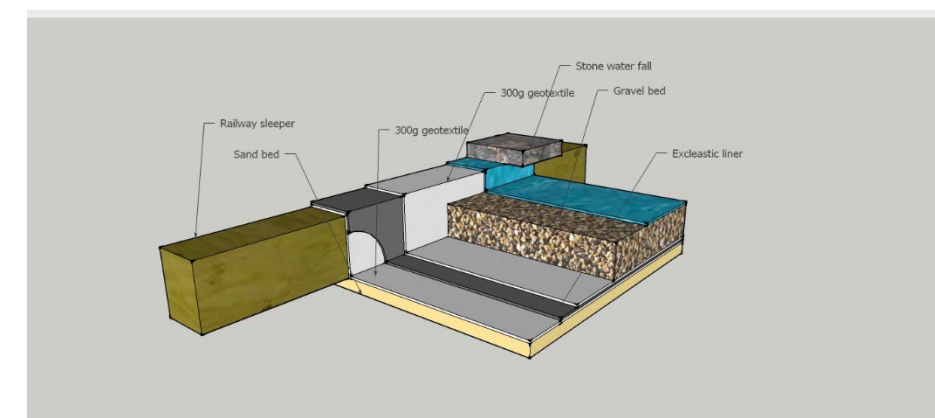
Description: Preparation of a naturalistic stream feature at Dundee Botanic Garden, using research into fluvial geomorphology, to create a series of pools, rifles and meanders. Designs to be taken to Stage D.



3D Sketch-up sandbox contour drape.



Sketch D Proposals



Section construction detail

Chartered Landscape Architects | Environmental Consultants | Arboricultural Consultants | Planning Technicians

TLC Environmental Limited Shorehead Studios 6 Shorehead Kingskettle Cupar KY15 7PH

S1T: 01337832626 – S2T: 01337830075 | E: info@tlcenvironmental.uk

SC549065 | VAT 265 2210 30



Hilton Rosyth

Value: £13k

Client: Kapital Residential

Contractor: Various

Landscape Management Plan & Garden Design

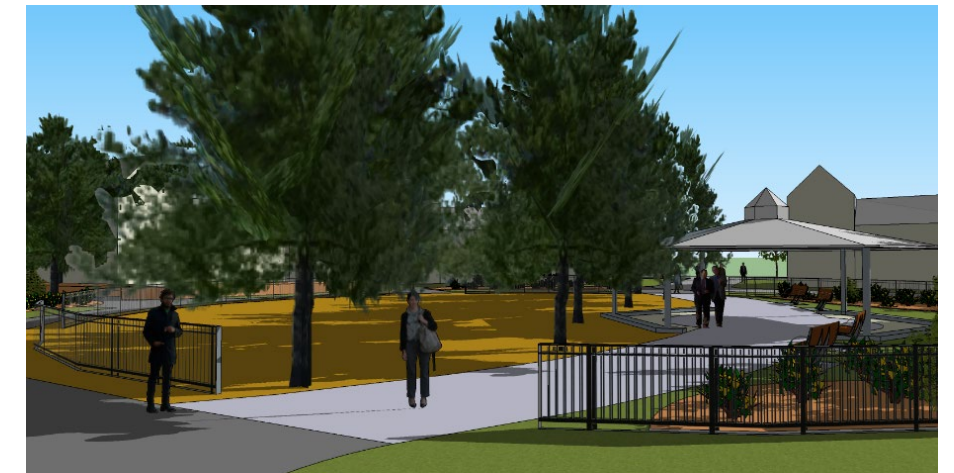
Description: Preparation of a range of landscape design and planting plan proposals in keeping with the 1800s Garden City movement. Incorporating modern ecological approaches to horticultural planting design using adaptive planting using herbaceous plants to counter the potential effects of Climate Change and the use of traditional plants to connect to the historic tree lined streets of the original Garden city of Rosyth circa 1916.



Overview of the proposed Centenary Garden.



Impression of Bandstand



Impression of Events area

Chartered Landscape Architects | Environmental Consultants | Arboricultural Consultants | Planning Technicians

TLC Environmental Limited Shorehead Studios 6 Shorehead Kingskettle Cupar KY15 7PH

S1T: 01337832626 – S2T: 01337830075 | E: info@tlcenvironmental.uk

SC549065 | VAT 265 2210 30



Castle Toward– HES Landscape Management Plan

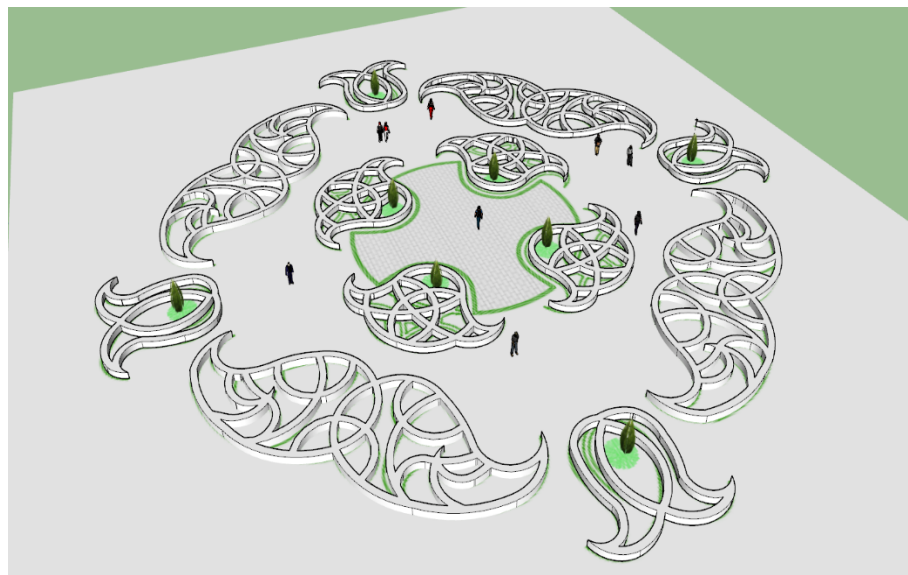
Value: £TBAk

Client: Kapital Residential Limited

Contractor: Various

Historic Landscape Management Plan

Description: Preparation of a Historic Landscape Management Plan and garden design for a Historic Environment Scotland Grant application, to restore renovate and conserve this once magnificent series of gardens. The property was built by Kirkman Finlay in 1820 and extended by Major Andrew Coats in the early 1900s. Both men contributed to the now designed landscape (GDL000197), through Edward La Trobe Bateman in 1877 and Frank Deas a pupil of Sir Robert Lorimer in the early 1900s. The redevelopment plans will see these once famed garden returned to their former glory.



Proposed Parterre



Japanese Garden



LMP

Chartered Landscape Architects | Environmental Consultants | Arboricultural Consultants | Planning Technicians

TLC Environmental Limited Shorehead Studios 6 Shorehead Kingskettle Cupar KY15 7PH

S1T: 01337832626 – S2T: 01337830075 | E: info@tlcenvironmental.uk

SC549065 | VAT 265 2210 30



Planning Consultancy

Value: £TBAk

Client: Fraser Property Scotland Limited

Contractor: Various

Planning Applications

Description: The management of land through the awareness of site conditions and legislation are critical elements in establishing the likely constraints in the planning process. TLC Environmental along with Structural and Civil Engineering colleagues can assist in providing a comprehensive package to facilitate pre-planning and development planning applications to PPP and Full status. Working closely with Architects and developers we can provide a one-stop shop, to include, pre-planning, geotechnical engineering reports and CDM 2015 Management.



4 Home Development

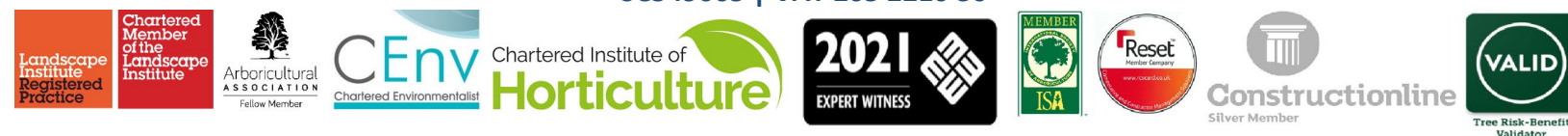
Hotel Development

Chartered Landscape Architects | Environmental Consultants | Arboricultural Consultants | Planning Technicians

TLC Environmental Limited Shorehead Studios 6 Shorehead Kingskettle Cupar KY15 7PH

S1T: 01337832626 – S2T: 01337830075 | E: info@tlcenvironmental.uk

SC549065 | VAT 265 2210 30



Maison Dubois Crieff

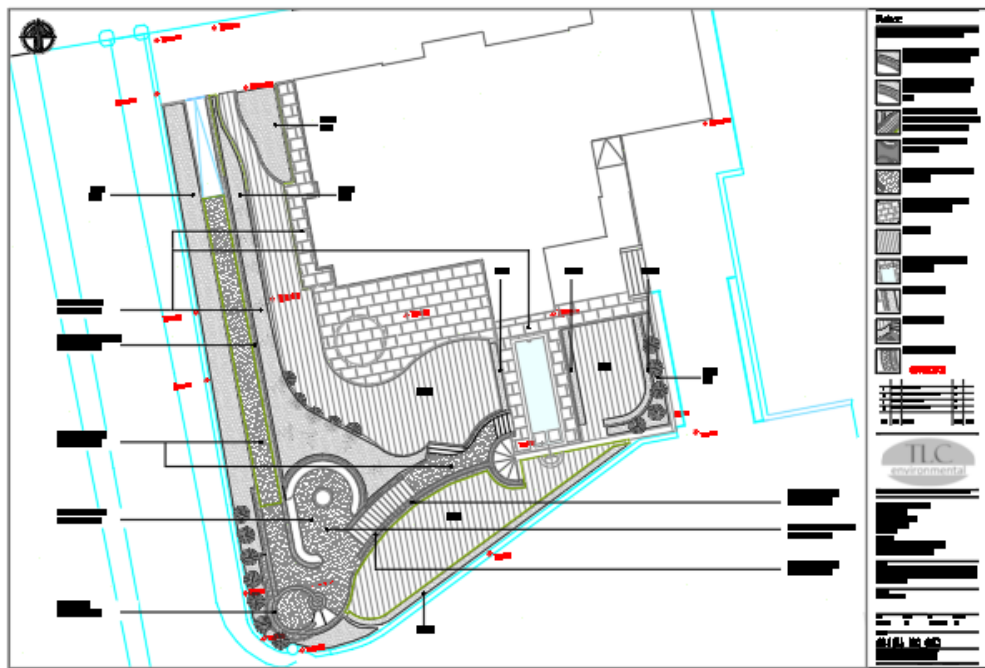
Value: £TBAk

Client: Mr & Mrs Wood

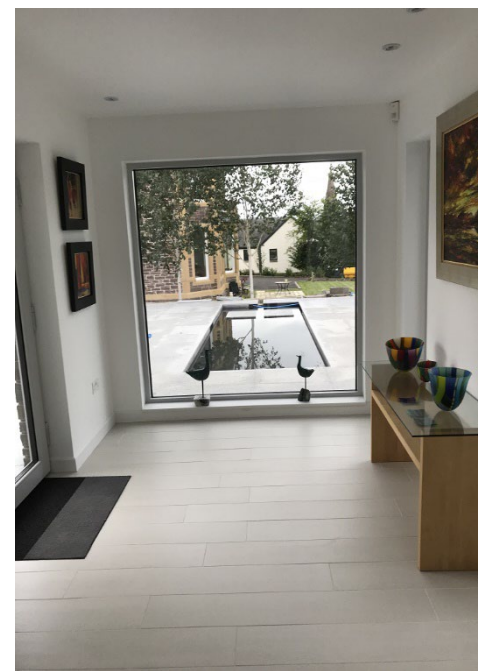
Contractor: Various

Garden Design

Description: Garden design with a landscape engineering solution to address the issues of slope and space. The design of revetment structures to create level area that access the new built house, whilst developing a connecting series of gardens, that are both intriguing and intimate. These gardens will deliver privacy where desired and openness to the surround views of Crieff. The project includes: sunken pod garden, architectural pond, waterfall, formal lawns and a themed landscape planting designs to be while and minimalist.



Garden design



Water feature



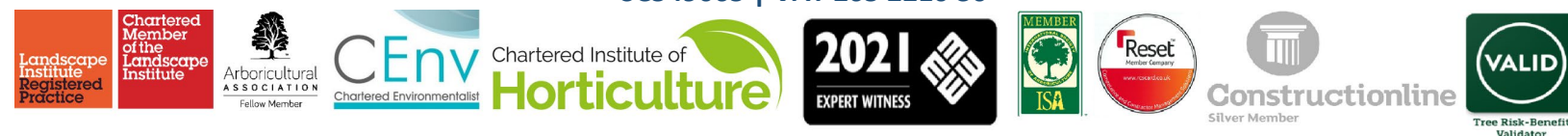
Tree planting & retaining wall

Chartered Landscape Architects | Environmental Consultants | Arboricultural Consultants | Planning Technicians

TLC Environmental Limited Shorehead Studios 6 Shorehead Kingskettle Cupar KY15 7PH

S1T: 01337832626 – S2T: 01337830075 | E: info@tlcenvironmental.uk

SC549065 | VAT 265 2210 30



Landscape Proposals

Value: £TBAk

Client: Various

Contractor: Various

Landscape Proposals

Description: Planning conditions always require before site starts that a landscape and maintenance proposals are submitted. We can provide a range of solutions using plants best suited for the site and developers budget. All development sites are visited to assess exposure, soil type and pH, along with a vegetation survey to inform plant selection to ensure a successful landscape proposal can be achieved. We use NBS Landscape to develop accurate and deliverable specifications.



Kings Knoll North Berwick



Lundin Links Hotel Leven



Lomond Hotel Kinnesswood

Chartered Landscape Architects | Environmental Consultants | Arboricultural Consultants | Planning Technicians

TLC Environmental Limited Shorehead Studios 6 Shorehead Kingskettle Cupar KY15 7PH

S1T: 01337832626 – S2T: 01337830075 | E: info@tlcenvironmental.uk

SC549065 | VAT 265 2210 30

