
 <p>Roads and Transportation Services Flooding, Shoreline and Harbour Team Bankhead Central Bankhead Park Glenrothes KY7 6GH</p>		<h1>HARBOUR FACT SHEET</h1>
<p>Web Site: www.wormitboatingclub.org.uk</p> <p>Email: admin@wormitboatingclub.org.uk</p> <p>Telephone: 07982 626014</p>	<h2>Woodhaven Pier (Wormit)</h2> <p>2 St Fort Road, Wormit, Fife DD6 8LA</p> <p>Lead Harbour Master Wormit Boating Club (WBC)</p>	
<p>The day-to-day management of this harbour is the responsibility of Wormit Boating Club. Please direct all initial communications via the contact details provided above.</p>		
<p>Landowner: Fife Council</p>	<p>Telephone: 03451 555 555 Ext.460556 Out of Hours: 03451 550 099</p>	<p>Web Site: www.fife.gov.uk Email: Harbours@Fife.gov.uk</p>

Description	The Pier includes a single pier, boat storage yard, and sailing club clubhouse, managed by Wormit Boating Club (WBC) under a lease with Fife Council (FC). The pier is publicly accessible and managed by FC. Access is controlled by a barrier, and a key can be rented from FC with a signed usage agreement.				
Location	Southern shore of the Firth of Tay			Imray chart No	C23
Limits	The Pier is not covered by the Fife Council Harbours Byelaws 1996 Fife Council operational responsibility is only within the physical constraints of the pier itself. Once vessels are in the water they must comply with the Dundee Port Authority Byelaws, which cover this area of the Firth of Tay.				
Approach	The approach to Woodhaven Pier is relatively open from the west through to the east, but the pier is in a small bay and the approaches to the pier are very shallow in all directions. There are no navigation marks on the pier or its approaches.				
Usage	Fishing vessels. Recreational vessels.				
Latitude (Entrance)	56.431700N	Longitude (Entrance)	2.9624205W	Grid Reference	340747,727002
Tidal Range	0.1 to 5.9 m (Chart Datum)	Neap Tide	2.3 m	Spring Tide	4.8 m
Navigational Access	No	Tide Gauge	No	Berths	20-30 small craft
Tugs	No	Anchorage	Contact Dundee Port Authority	Pilotage	No
Cargo Handling	No	Repair facilities	Contact WBC	ISPS Compliant	N/A
Maximum Draft	N/A	Maximum Length	N/A	Maximum Beam	N/A

Control Depths/Drafts	Location	Bed Material	Bed Level	Keel Clearance	Note
	General	Sand / Silt Rocky/Stones	Unavailable	Min 1 m	Prone to seasonal tide activity
	There is no current bathymetric survey information for Woodhaven Pier. However, the seabed levels around the pier are thought to be relatively stable, with no significant changes on a year-to-year basis.				

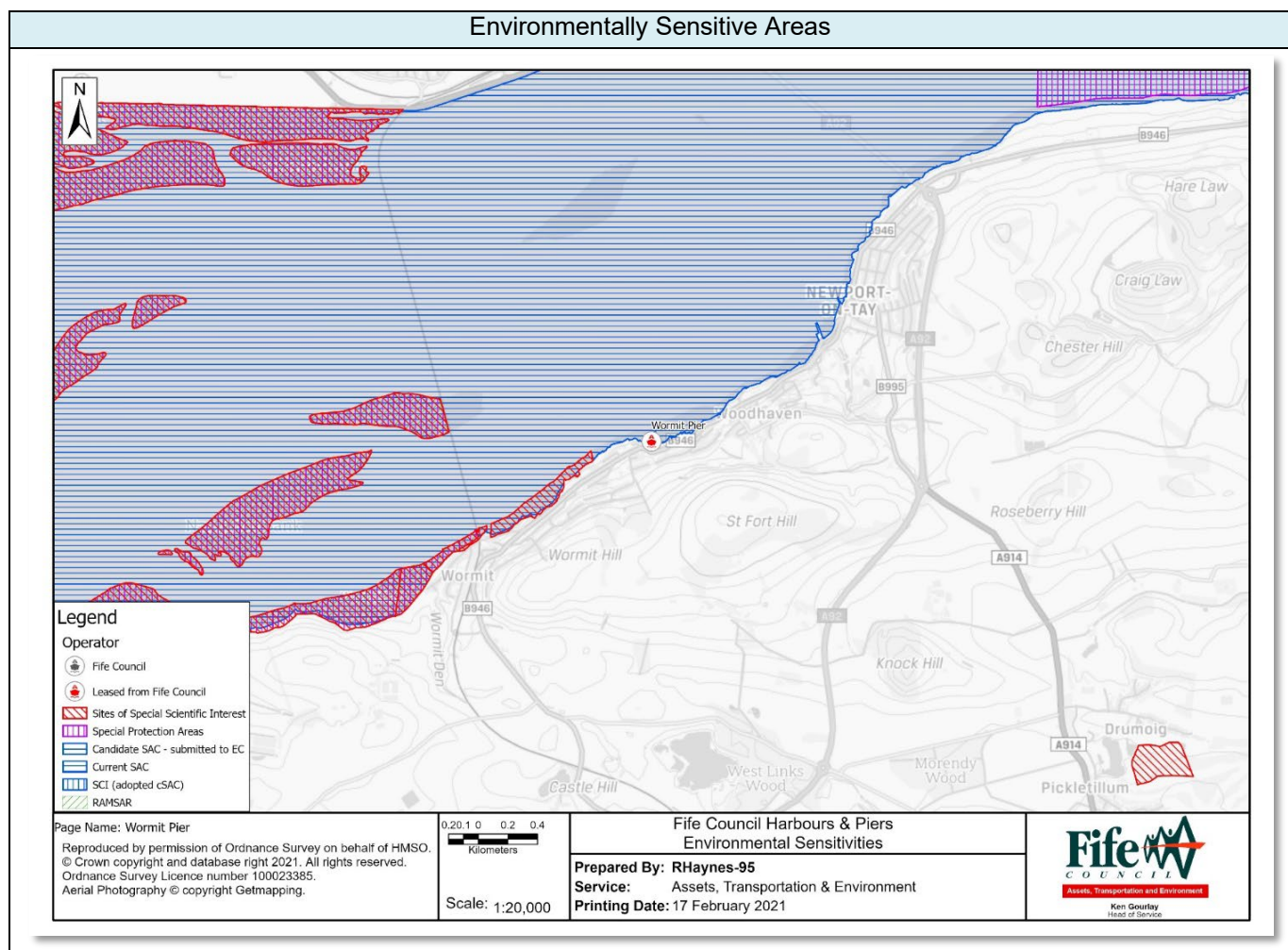
Communication	VHF	Calling and Distress/Safety	16	Harbour Operations	11
---------------	-----	-----------------------------	----	--------------------	----

Control	Non-local vessels intending to use the pier should contact the FC Lead Harbour Master in advance. Access is controlled by a barrier, and a key can be rented from FC with a signed usage agreement. Wormit Boating Club (WBC) members have a key for emergencies. All vessels must approach the pier cautiously, watching for other vessels and water users, and must do so at a slow speed.				
---------	--	--	--	--	--

Operating Constraints	The approach to the pier is relatively shallow, and the entire pier dries out at low water and a chart and tide tables should be consulted prior to arrival or departure
	In high winds and / or large wave / swell conditions the approach to the entrance can be very difficult and the Harbour Master's advice must be sought prior to arrival or departure
	In restricted visibility the WBC Harbour Master will determine whether vessels can safely leave or enter
	The entrance into the harbour is around 18m in width
	There are no permanent moorings available on the pier, and the pier is for launching and recovery of vessels as well as loading and unloading vessels only.

Aids to Navigation	None

Environmental Sensitivity	Special Area of Conservation (SAC), Special Site of Scientific Interest (SSSI), Special Protection Area (SPA), and a Regionally Important Geological Site (RIGS)
---------------------------	--



Oil Pollution Hazard	Responsibility	Control	
General Oil Spillage.	Wormit Sailing Club	Procedures on safe operation and emergencies	
		Provision of signage stating the organisations to be contacted in the event of an oil spillage	
General Oil Spillage	Fife Council Note: Oil spill response if required shall be initiated by the local operator and forwarded to Fife Council for action. Spill kits are not provided on site. Fife Council shall assess and provide equipment should action be required.	Provision of signage stating the organisations to be contacted in the event of an oil spillage when the Harbour Master is not on duty – maximum response time 90 minutes	
		Competent trained operatives including accredited to MCA1 and or MCA4 Oil spill response	
		Provision and storage of Tier 1 oil pollution clean-up and containment materials	
		Equipment	Number
		3m x 13cm Spaghetti Water Boom	0
		50cm x 40cm Absorbent Pads	0
		Protective Chemical Suit	0
Provision for Tier 2 Specialist Contractor			
Oil Pollution Action	Contact Fife Council immediately Fife Council will implement the Oil Pollution Response Procedure to effectively manage and mitigate the impact of oil pollution incidents.		

Booming Locations
<p>With only a pier for shelter from prevailing waves, a booming solution around the individual vessel is required. Linking the pier to the coastline with a boom is not practicable.</p>