

Training

- Sign Language Interpreter Awareness
- Deaf Awareness
- BSL Taster Session



Communication Support

We provide:

- Qualified British Sign Language Interpreters
- Hands On Interpreters
- Deafblind Guide Communicators
- Lip Speakers
- Electronic Notetakers



Contact Us



Deaf Communication Service
Town House
Wemyssfield
Kirkcaldy
KY1 1XW



Online
www.fifedirect.org.uk/fifeDCS



Email
swinfo.deafcommunications@fife.gov.uk



Phone
03451 551503



Textphone
01592 583340



Fax
01592 583263



SMS text message
07984 356 580



Find us on Facebook
FifeDCS



Alternative Formats

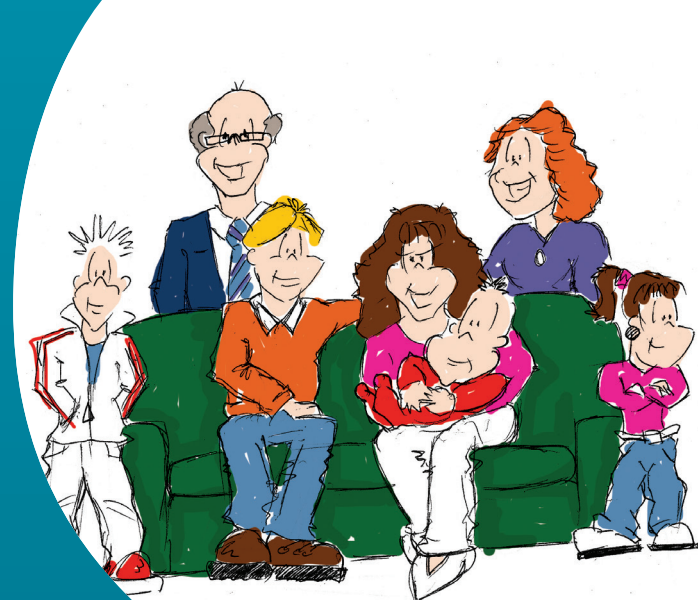
To request information in large print, braille, audio CD/tape or BSL interpretation contact us using one of the numbers above.

If you have any comments or complaints about the service you have received, please contact the Team Manager at the above address.

Fife Council and NHS Fife are supporting the people of Fife together through Fife's Health and Social Care Partnership.
www.fifehealthandsocialcare.org



Published 08/08/2017 • Reviewed 06/2017 Drawings by Austin Tonnar



Fife Health
& Social Care
Partnership



Deaf Communication Service



Supporting the people
of Fife together



Who we are

We are a Fife wide service who works closely with local communities. Our aim is to remove the barriers to communication. With many years of experience, we support individuals who have a hearing loss.

We also work closely with a vast range of local voluntary and community groups in providing advice, information and support.

- Citizen's Advice Rights Fife
- Police Scotland
- Scottish Fire and Rescue Service
- Job Centres
- Other external agencies and voluntary organisations



Who the service is for

For all ages who are:

- Deaf
- Deaf sign language users
- Hard of hearing
- Deafened
- Deafblind
- And for people newly diagnosed with a hearing loss.

We also help:

- Families
- Carers
- Friends
- General Public
- Employers
- Service providers / Organisations



How we can help you

- Advice, support and information in relation to Deafness
- Drop in service (contact team for times)
- Specialist social work support
- Workplace assessments (for anyone who employs or is about to employ a person with a hearing loss)
- Empowering Deaf people to access services
- Advice and information about specialist equipment
- Loan of equipment and hire of Loop systems
- Producing written materials in British Sign Language
- Provide appropriate communication support
- Provide training to suit your needs

