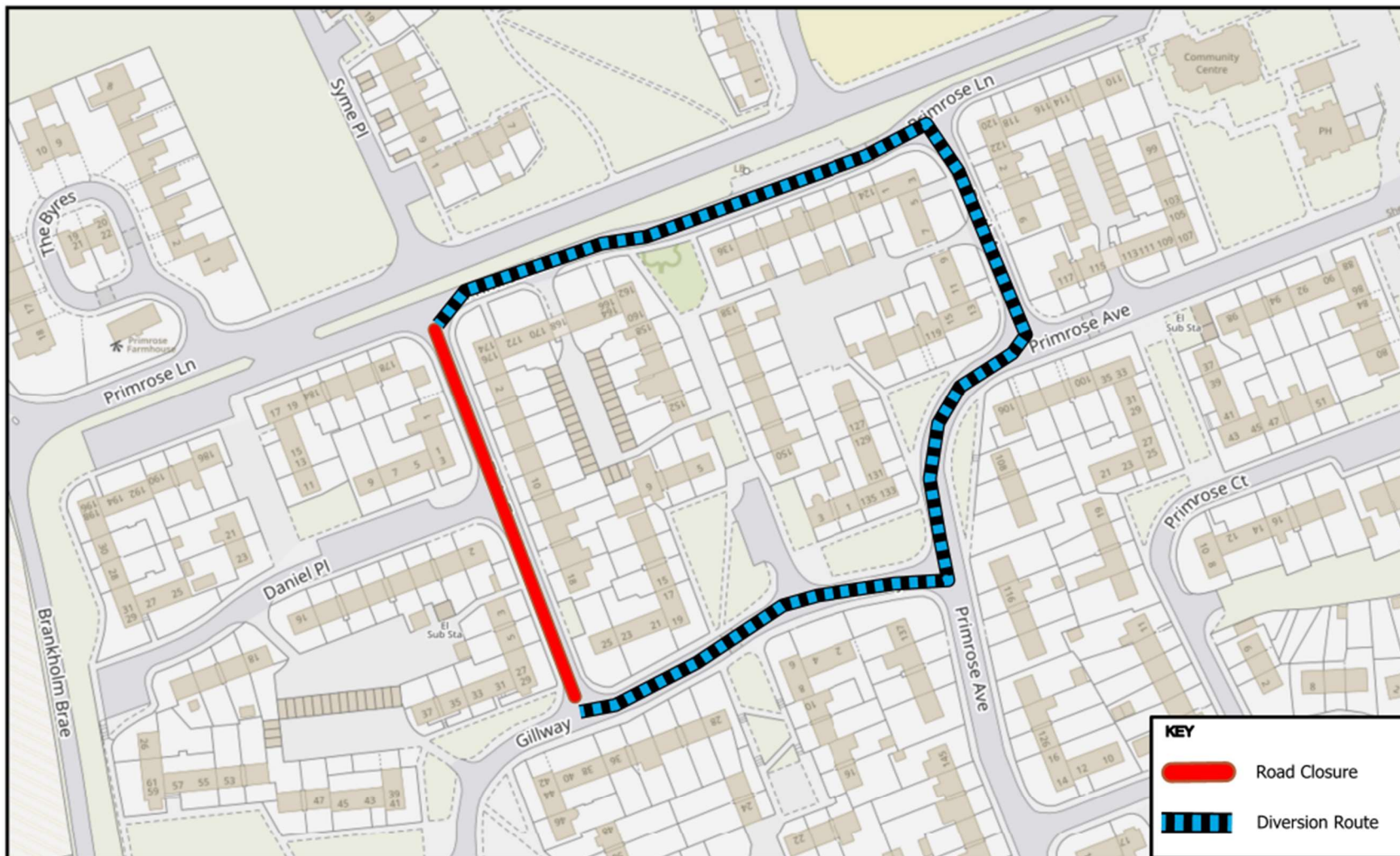


Temporary Road Closure

- WHERE ?** Train Terrace, Rosyth (from Jct. Primrose Lane to Jct. Gillway).
- The alternative route for through traffic is via Gillway, Primrose Avenue, Boothe Avenue & Primrose Lane.
- Access for emergency service vehicles will be maintained.
- Access for resident's vehicles will be maintained when safe to do so.
- Pedestrian access will be maintained.
- WHEN ?** From 9am Tuesday 23rd September 2025 to 23.59pm Wednesday 24th September 2025.
- WHY ?** To allow ironwork repair works to be carried out in safety.
- WHO ?** Contraflow Ltd are responsible for these works and can be contacted as follows:

Emergency/Out of Hours: 01236862400





KEY	
	Road Closure
	Diversion Route

© Crown copyright and database rights 2025.
Ordnance Survey 100023385
Aerial Photography © copyright Getmapping.

N

Scale: 1:1,512

Train Terrace, Rosyth.

Prepared By: BAZ
Service: Roads & Transportation

