



Leisure & Cultural Services

# Fife Greenspace Strategy

## 2011 -2016

*increasing access to life enhancing greenspace*





Title of report	Fife Greenspace Strategy. 2011-2016
Date of publication	16 <sup>th</sup> November 2010
Author	Kevin O'Kane Greenspace Partnership Officer Leisure and Cultural Services Fife Council
Contact details	Email : <a href="mailto:Kevin.okane@fife.gov.uk">Kevin.okane@fife.gov.uk</a>  Telephone : 08451 55 55 55 extension 49 33 00
Address	7 Abbot Street, Dunfermline, KY12 7NJ
Web page	A web page has been set up in Fife Direct ( <a href="http://www.fifedirect.org.uk/greenspace">www.fifedirect.org.uk/greenspace</a> ).  This page will hold links to all audit and strategy information and provide an update on progress.

<b>CONTENTS</b>	<b>Page</b>
<b>1.0 Foreword</b>	<b>2</b>
<b>2.0 Context</b>	<b>3</b>
2.1 Open space strategies	3
2.2 Geographic context	3
2.3 Definition of greenspace	4
2.4 Importance of greenspace	6
2.5 Policy context	8
<b>3.0 Greenspace Audit methodology</b>	<b>11</b>
<b>4.0 Fife wide findings</b>	<b>22</b>
<b>5.0 Challenges</b>	<b>24</b>
<b>6.0 Area Committee findings and priorities</b>	<b>25</b>
6.1 Cowdenbeath Area	26
6.2 City of Dunfermline Area	29
6.3 Glenrothes Area	31
6.4 Kirkcaldy Area	33
6.5 Levenmouth Area	36
6.6 North East Fife Area	39
6.7 South West Fife Area	46
<b>7.0 Greenspace Strategy</b>	<b>52</b>
<b>8.0 Delivery</b>	<b>58</b>
<b>9.0 Greenspace Strategy Action Plan</b>	<b>59</b>

## 1 Foreword

Fife has a wealth of great greenspaces, from award winning beaches such as Aberdour Silver Sands and Leven East Beach, to historic town parks, such as Beveridge Park, Kirkcaldy and Pittencrieff Park, Dunfermline. Many of the greenspaces reflect the history of the area such as Lochore Meadows Country Park, a park reclaimed from coal workings, and Riverside Park, zoned as part of Glenrothes new town. Many reflect the rich culture of the kingdom such as Bow Butts, Ceres a greenspaces used for an annual fair since the battle of Bannockburn. Our beaches contribute millions of pounds to the local economy.

The Fife Greenspace Audit found that many residents (59%) have access to quality greenspace. Many of the towns and villages have good networks of greenspace, but there are settlements where it would be beneficial to increase access to quality greenspace.

The Fife Greenspace Strategy is a five year plan (2011 - 2016) to ensure that the majority of residents have access to quality greenspace. One of the outcomes of the strategy is to increase the life enhancing use of greenspace, whether by better use for community food growing, walking and cycling or for more events.

Fife's Greenspace Strategy will help to deliver benefits for all those living, working and visiting Fife. The strategy will not just benefit the environment, but also contribute to the local economy and will make a contribution to the Council's 'Big 8' priorities.

## 2 Context

### 2.1 Open Space Strategies

One of the main reasons why Fife Council carried out a greenspace strategy was to comply with a requirement of the Scottish Governments Scottish Planning Policy 11 Open Space and Physical Activity 2007.

*“The purpose of the strategy is to set out a vision for new and improved open space which is appropriate to local circumstances. Where the audit has identified deficiencies in different types of open space provision, this must be clearly addressed through the strategy. The completed strategy should safeguard valued open space and guide the allocation of resources for investment. ”*

SPP11 has now been superseded by SPP (2010) which consolidates all SPPs<sup>1</sup>. The new policy relating to open space in SPP (2010) states that Planning Authorities (such as Fife Council) should prepare an open space strategy.

### 2.2 Geographic context

Fife is a peninsula in eastern Scotland with a coastline of 170 kilometres (105 miles) bounded by the Firth of Forth to the south and the Firth of Tay to the North. The 'Kingdom' of Fife, as it is fondly known, was once an ancient earldom whose earls had the right to enthrone the kings of Scots<sup>2</sup>.

Many towns and villages along the peninsula expanded in the middle ages as busy ports trading in a wide range of goods to the Baltic and the Low Countries. Situated along the coast are 5 out of Scotland's 7 Blue Flag award beaches<sup>3</sup>.

The geology of Fife has had an impact on its history. Deposits of coal formed 320 million years ago in mid and south west Fife, started to be extracted on an industrial scale in the 19<sup>th</sup> century. Many of the towns and villages in this area expanded due to the coalfield and other industries such as ship building, linen and linoleum manufacture. In 2002 the last deep coal mine closed. Many green spaces are the legacy of the coal field, for example

<sup>1</sup> <http://www.scotland.gov.uk/Publications/2010/02/03132605/0>

<sup>2</sup> <http://www.scran.ac.uk/database/record.php?usi=001-000-001-715-L&searchdb=scran>

<sup>3</sup> <http://coastal.keepsotlandbeautiful.org/current-award-holders.asp>

Lochore Meadows Country Park was created due to a land reclamation project.

The north east differs in character from mid and south west Fife, this is a rural agricultural area. A higher proportion of the land is under cultivation than in other parts of Scotland. There is still an active fishing fleet at Pittenweem. The town with the largest population in the north east is St Andrews (population 16,596<sup>4</sup>), which has Scotland's oldest university and is also known as the home of golf.

The population of Fife is 363,460<sup>5</sup>.

The population can be broken down into the following groups, children (aged 0-15) 18%, working aged adults (16-64) 65% and retired adults (65+) 17%. By 2028, retired adults rise to 24% of the population<sup>6</sup>.

96% of the population living in 134 settlements. The three largest towns are Kirkcaldy (48,108), Dunfermline (45,462) and Glenrothes (38,927).

In 2009 16% of Fife's population was income deprived. The most deprived areas were, Templehall, Gallatown West, Sinclairtown Central (Kirkcaldy), Methilhill East, Aberhill, Methil Memorial Park, Kirkland South (Methil), Ballingry West<sup>7</sup>.

The areas that were least income deprived were Dalgety Bay central, St Andrews SW, Dunfermline Garvock Hill, St Andrews N & Strathkinness, St Andrews central, Dunfermline Ballyeoman, Crossford Charlestown Limekilns, Dalgety Bay W & Hillend<sup>8</sup>

## 2.3 The definition of Greenspace

Greenspace is defined as vegetated land in and around towns and villages<sup>9</sup>. Planning Advice Note 65 Planning and Open Space<sup>10</sup> sets out a typology for open space. For the Fife Greenspace Strategy, this was further refined and two types of greenspaces were created Publicly Usable Greenspace and Functional Greenspace.

**Publicly usable greenspace** is land that can be easily accessed and is multifunctional, these types of space are set out in figure 1.

<sup>4</sup> Population estimates for towns and villages in Fife, Fife Council Development Services 2008

<sup>5</sup> <http://190.1.145.60/fish/subjects/index.cfm?fuseaction=servicesdisplay&objectid=81CCADDE-319A-11D6-8DD600508BBD18A1>

<sup>6</sup> <http://www.gro-scotland.gov.uk/files2/stats/population-projections/2008-based-pop-proj-scottish-areas/j1153303.htm#fg6a>

<sup>7</sup> [http://www.fifedirect.org.uk/uploadfiles/publications/c64\\_SIMD09FifeSummaryBriefingv1.1070410.doc](http://www.fifedirect.org.uk/uploadfiles/publications/c64_SIMD09FifeSummaryBriefingv1.1070410.doc)

<sup>8</sup> <http://simd.scotland.gov.uk/Fife?curPage=19>







<sup>9</sup> <http://www.scotland.gov.uk/Publications/2008/05/30100623/5>

<sup>10</sup> <http://www.scotland.gov.uk/Publications/2008/05/30100623/5>


**Functional greenspace** is land which has restricted access such as entrance charges and opening hours and restricted public use. These types of space are set out in figure 2.

An outcome of the Fife Greenspace Strategy is to increase publicly usable greenspace. Changes to functional space such as easier access could then change this type of land into publicly usable greenspace.

**Figure 1 - Publicly usable greenspace**

		
		
<p><b>Public parks and gardens</b></p>	<p><b>Residential greenspace</b></p>	<p><b>Playspace</b></p>
<p><b>Sports areas</b> (Playing fields Tennis Courts Bowling Greens Other sports e.g cricket)</p>	<p><b>Green corridors</b> (Green access routes, Riparian routes)</p>	<p><b>Natural/semi-natural greenspaces</b> (woodland, open semi natural)</p>
	<p><b>Growing spaces</b> Allotments, community gardens</p>	

**Figure 2 - Functional greenspace**

		
<p><b>Public building grounds</b> ( school grounds, university grounds, hospital grounds, Fife Council building grounds )</p>	<p><b>Infrastructure space</b> (Roads, retail and business parks )</p>	<p><b>Restricted sports areas</b> Golf Courses</p>
		
<p><b>Restricted natural space</b> Open water</p>	<p><b>Burial grounds</b></p>	

## 2.4 The importance of greenspace

Evidence of the importance of greenspace is growing. Research is showing a range of benefits such as the economic benefit, importance to the quality of life, health and for environmental sustainability.

### **Economic benefit**

Research by The Trust for Land in America calculated the economic benefit of the greenspace network in the city of Philadelphia (population 1.5million). The study calculated that the greenspace network in terms of seven factors (*clean air, clean water, tourism, direct use, health, property value and community cohesion.*) contributed £16million to the city revenue, £11 million in municipal cost savings.<sup>11</sup>

The Fife Coast and Countryside Trust has estimated that the coastal path contributes £24 million to the Fife economy<sup>12</sup>. The beaches in Fife are estimated to contribute £2.4 million to the local economy<sup>13</sup>.

### **The quality of life**

In terms of quality of life, over 95% per cent of people believe it is very or fairly important to have green spaces near to where they live.<sup>14</sup>

Well designed green and open spaces can benefit communities in a variety of ways including increasing levels of social contact and social integration, particularly in underprivileged neighbourhoods<sup>15</sup>.

In one study, green space in a housing complex encouraged more social activity and more visitors. Residents also knew more of their neighbours and said that their neighbours were more concerned with helping and supporting each other<sup>16</sup>.

<sup>11</sup> [http://www.tpl.org/content\\_documents/PhilaParkValueReport.pdf](http://www.tpl.org/content_documents/PhilaParkValueReport.pdf)

<sup>12</sup> [http://www.fifecoastandcountryside.co.uk/past-projects\\_45\\_7.html?name=tns\\_coastal\\_path\\_usage\\_study&view=74](http://www.fifecoastandcountryside.co.uk/past-projects_45_7.html?name=tns_coastal_path_usage_study&view=74)

<sup>13</sup> <http://www.fifedirect.org.uk/atoz/index.cfm?fuseaction=service.display&objectid=BF1D449E-3E42-4C27-A7D291EAA0D0E4DF>

<sup>14</sup> 91 *Survey of public attitudes and behaviours to the environment survey, 2007 and 2009*  
<http://caburl.com/ax>

<sup>15</sup> Sullivan WC, Kuo FE and Depooter SF (2004) The fruit of urban nature: Vital neighbourhood space. *Environment and Behaviour* 36(5): 678-700; Coley RL, Kuo FE, Sullivan WC (1997) Where does community grow? The social context created by nature in urban public housing. *Environment and Behavior* 29(4): 468- 494; Pretty J, Peacock J, Hine R, Sellens M, South N and Griffin M (2007) Green exercise in the UK Countryside: Effectson health and psychological well-being, and implications for policy and planning. *Journal of Environmental Planning and Management* 50(2): 211-231.

<sup>16</sup> Sullivan WC, Kuo F and DePooter SE(2004) The Fruit of Urban Nature: Vital Neighbourhood Spaces *Environment and Behaviour* 36 (5): 678-700.

A natural play environment at school also helps reduce bullying, increases creative play, improves concentration and a feeling of self worth in children<sup>17</sup>.

### Health benefits

There is now a range of evidence to show the mental and physical health benefits of greenspace.

A Swiss study in a forest park in Zurich found that visitors reported decreases in headaches and in their levels of stress – the positive effects increased with the length of stay and with the level of physical activity undertaken<sup>18</sup>.

Mortality from circulatory diseases were lower in populations living in the greenest areas<sup>19</sup>

The psychological benefits of jogging in an urban park outweigh those of street jogging<sup>20</sup>. 'Green gyms', keeping fit by engaging in activities in the open air, have been shown to result in positive physical and mental health outcomes<sup>21</sup>.

Children's physical activity levels are increased when they live closer to parks, playgrounds, and recreation areas<sup>22</sup>.

In densely populated urban areas, green space located within walking distance is more likely to promote physical activity outside the home<sup>23</sup>.

The survival of older people increases where there is more space for walking near their home, with nearby parks and tree-lined streets<sup>24</sup>.

<sup>17</sup> Ridgers ND, Stratton G, Fairclough SJ and Twisk J W (2007) Children's physical activity levels during school recess: A quasi-experimental intervention study. *International Journal of Behavioral Nutrition and Physical Activity* 4: 19; see also 'Playtime initiatives could reduce childhood obesity' (2009) University of Essex. [http://www.essex.ac.uk/events/event.aspx?e\\_id=982](http://www.essex.ac.uk/events/event.aspx?e_id=982)

<sup>18</sup> Hansmann, R., Hug, S.-M. & Seeland, K. (2007) Restoration and stress relief through physical activities in forests and parks. *Urban Forestry & Urban Greening*, 6, 213-225.

<sup>19</sup> Mitchell R and Popham F (2008) Effect of exposure to natural environment on health inequalities: An observational population study. *The Lancet* 372 (9650): 1655 – 1660.

<sup>20</sup> Bodin M and Hartig T (2003) Does the outdoor environment matter for psychological restoration gained through running? *Psychology of Sport and Exercise* 4: 141-15

<sup>21</sup> BTCV (2008) BTCV Green Gym national evaluation report: Summary of findings. [http://www2.btcv.org.uk/gg\\_evaluation\\_0308.pdf](http://www2.btcv.org.uk/gg_evaluation_0308.pdf)

<sup>22</sup> Davidson K and Lawson C (2006) Do attributes of the physical environment influence children's level of physical activity? *International Journal of Behavioural Nutrition and Physical Activity* 3 (19): 1-17.

<sup>23</sup> Giles-Corti B and Donovan R (2003) Relative influences of individual, social environmental, and physical environmental correlates of walking. *American Journal of Public Health* 93 (9): 1583-1589; Takano T, Nakamura K and Watanabe M (2002) Urban residential environments and senior citizens' longevity in megacity areas: the importance of walkable green spaces. *Journal of Epidemiology and Community Health* 56: 913-918.

<sup>24</sup> Maas J, Verheij RA, de Vries S, Spreeuwenberg P, Schellevis FG and Groenewegen PP (2009) Morbidity is related to a green living environment. *Journal of Epidemiology and Community Health* 63: 967-97.

### **Environmental sustainability**

Greenspace can improve air quality, coniferous trees can capture particulates and toxic gases such as nitrogen dioxide and ozone<sup>25</sup>.

A study in Stockholm, Sweden found that urban and suburban forests act as a refuge for threatened species of bird whose numbers had been decreasing in rural areas. Crucial to achieving this was the establishment of green corridors that included large areas of natural vegetation, a network of important habitats and a range of both mature and decaying trees<sup>26</sup>.

### **Cultural importance**

Many greenspaces are important culturally and have a long history of use. Bow Butts in Ceres is a space that was used after the battle of Bannockburn (1314) for arrow shooting practice. On the last Saturday of June ever since a games day has been held<sup>27</sup>.

In the Victorian era, a number of individuals who became rich through industry bequeathed parks. One of the most significant legacies of this is Pittencrieff Park, which was given to the people of Dunfermline by Andrew Carnegie in 1903. Andrew Carnegie's vision was a park for the people that would be used to "bring a little sweetness and light the toiling masses of Dunfermline".

Events such as highland games can attract large crowds in 2004 the Burntisland Highland Games on The Links attracted 50,000 visitors<sup>28</sup>.

## **2.5 Policy context**

The importance of greenspace in delivering environmental and social and health action is recognised in national and local policy.

### **2.5.1 National Context**

Greenspace is not specifically mentioned as an outcome of the Scottish Government (2007) but it is linked to two national outcomes and a number of national indicators:

- Sustainable place national outcome  
*We live in well-designed, sustainable places where we are able to access the amenities and services we need*
- Environment outcome  
*We value and enjoy our built and natural environment and protect it and enhance it for future generations*

<sup>25</sup> Bolund, P. and S. Hunhammar (1999). "Ecosystem services in urban areas." *Ecological Economics* 29(2): 293-301

<sup>26</sup> Mortberg, U. and H. G. Wallentinus (2000). "Red-listed forest bird species in an urban environment - assessment of green space corridors." *Landscape and Urban Planning* 50(4): 215-226.

<sup>27</sup> <http://www.ceresgames.co.uk/>

<sup>28</sup> <http://www.burntislandhighlandgames.co.uk/>

## Land Use, Social and Environmental Policy

**Land Reform (Scotland) Act 2003** is a significant piece of legislation for greenspace. It requires Local Authorities to create a Core Path Plan. The law states 'it is the duty of the local authority...to draw up a plan for a system of paths ('**core paths**') sufficient for the purpose of giving the public reasonable access throughout their area'.

The National Planning Framework 2 (2009) includes the **Central Scotland Green Network** as a national development. The CSGN is described as a

*"...a step change in environmental quality, woodland cover and recreational opportunities...[and] make Central Scotland a more attractive place to live in, do business and visit; help to absorb CO<sup>2</sup>; enhance biodiversity; and promote active travel and healthier life styles".*

The CSGN is evolving and at present South Fife is included. One of the ten goals of the CSGN is to ensure that every home is within 300m of greenspace or accessible countryside.

**Designing Streets** (2010) is a policy which sets out how streets can be social spaces rather than vehicular movement routes.

The **Scottish Biodiversity Strategy** 2004, includes two outcomes which have clear links - increasing the public's awareness of biodiversity and restoring and enhancing biodiversity in planning, design and practice.

### **Social and health policy**

Greenspace is linked to three national social and health policies. **Achieving our potential** (2008) is the national framework to tackle poverty and income. One of the aims of this policy is to regenerate disadvantaged communities.

**Equally Well** the Ministerial Task Force on Health Inequalities 2008 is the ministerial taskforce to tackle health inequality due to deprivation. Increasing the use of greenspace and improving physical activity is one way of addressing this.

### **The Early Years Framework**

Improving outcomes and children's quality of life through play is one of the 10 objectives of the Early Years Framework.

### **Regional Policy**

**Strategic Development Plans for Edinburgh and South East Scotland (SESplan) and Tayplan.** SESplan replaces the Fife Structure Plan for the south of Fife and Tayplan for the north of Fife. SESplan will provide policies on development, protection and enhancement of the Green Network.

## 2.5.2 Fife Policy Context

A range of Fife policies include greenspace in their objectives

- **Fife's Community Plan 2007**

The Fife Environmental Partnership is the strategic partnership for the sustaining and improving our environment theme in Fife's Community Plan. The partnership is being revised and restructured and a Greenspace Task Group is proposed as part of the new structure. The Community Plan is in the process of being revised.

- **Development Policies**

The three Local Plans ( St Andrews and East Fife, draft Mid Fife and draft Dunfermline and West Fife) all acknowledge that the Greenspace Strategy will provide further information on greenspace provision.

- **Core Path Plan**

The Core Path plan sets out the network of paths required by the Land Reform Act. The Final Draft Core Paths Plan was approved by Fife Council Planning Committee on 26th January<sup>29</sup> it is expected that a public inquiry will be held in 2011.

- **Fife Local Biodiversity Action Plan 2009-2011.**

Urban Woodlands are a key habitat in the plan and an action is included to link the plan with the greenspace strategy in ensuring the ecological improvement of woodlands<sup>30</sup>.

- **Allotments Strategy ( 2009-2014)** emphasises the role that the Greenspace Strategy can have in creating new quantity standards for greenspace which would include allotment provision<sup>31</sup>.

### Social and health policies

- **Fife's Joint Health Improvement Plan 2007 – 2010,**

Developing and implementing the Greenspace Strategy is an outcome within the plan. The plan is in the process of being reviewed.

- **Fairer Fife Framework 2008** sets out Fife Partnership's approach to addressing inequalities, poverty and deprivation. Ensuring that residents live in well designed, sustainable places with access to amenities and services is a key driver of the framework.

- **Childrens Services Plan 2008**

<sup>29</sup> [www.fifedirect.org.uk/corepaths](http://www.fifedirect.org.uk/corepaths)

<sup>30</sup> [http://fifecoastandcountrysidetrust.co.uk/biodiversity\\_1\\_2\\_25.html?name=download\\_the\\_fife\\_local\\_biodiversity\\_action\\_plan&view=32](http://fifecoastandcountrysidetrust.co.uk/biodiversity_1_2_25.html?name=download_the_fife_local_biodiversity_action_plan&view=32)

<sup>31</sup> <http://www.fifedirect.org.uk/topics/index.cfm?fuseaction=service.display&pageid=182348BC-940D-20B8-873FC91A15DDD2DE&subjectid=0BDADCAB-508B-DE79-47F554D71D7D10A8&objectid=2A9C3C46-AFAD-4A19-91FA7E4D6D92ACDA>

One of the focus areas is to develop and support green spaces across Fife to ensure quality accessible play opportunities for all children.

- **Generations of change – Cultural Strategy 2009**

Three action included in the strategy which have links to greenspace these were: increasing cultural investment in greenspaces and looking at what cultural spaces there are in every town and village.

## 3 Greenspace Audit methodology

### 3.1 Assessing greenspace

Fife Council have carried out an audit of greenspace in and around 112 towns and villages between 2007 and 2009. There is no national methodology to audit greenspace but it is recommended to assess the quantity, quality and access and consult with the public.

The audit was composed of five parts:

- Assessing the **quantity** of greenspace within settlement boundaries
- Assessing the **quality** of greenspace sites in and around settlements
- Assessing pedestrian **access** from residential properties to greenspace sites in and around settlements
- Assessing the **greenspace networks** of Fife, Fife Council Area Committees and settlements. The network assessment was a combination of the quantity, quality and access results.
- Assessing the **public consultation** using the People's Panel questionnaire.

#### Quantity

Quantity is the area of publicly usable greenspace within a settlement boundary. The quantity of greenspace is linked to the size of the population.

There are no national standards to audit the quantity of greenspace. Many greenspace audits use Fields in Trust 6 Acre (2.4 hectares) standard but FIT have now stated that this is a standard for outdoor play space<sup>32</sup>.

---

<sup>32</sup> <http://www.fieldsintrust.org/files/scotland%281%29.pdf>

To audit the quantity of greenspace, publicly usable greenspace types inside settlement boundaries were calculated. Figure 4 shows in detail the greenspace map of Cupar. Figure 5 shows only publicly usable greenspace in Cupar.

The average amount of publicly usable greenspace per 1,000 head of population was used as the standard or benchmark to assess quantity.

The standard was 6 hectares (15 acres) per 1,000 of the population.

Figure 6 graphically shows the results for each settlement and the ratings used.

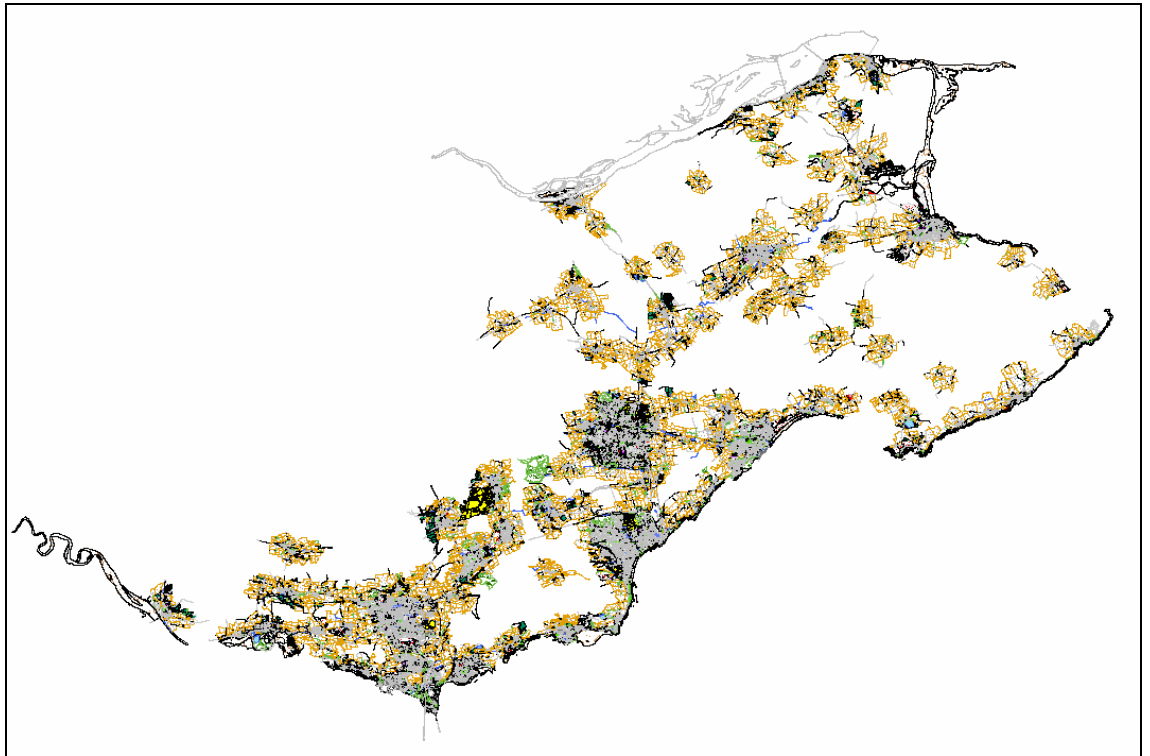
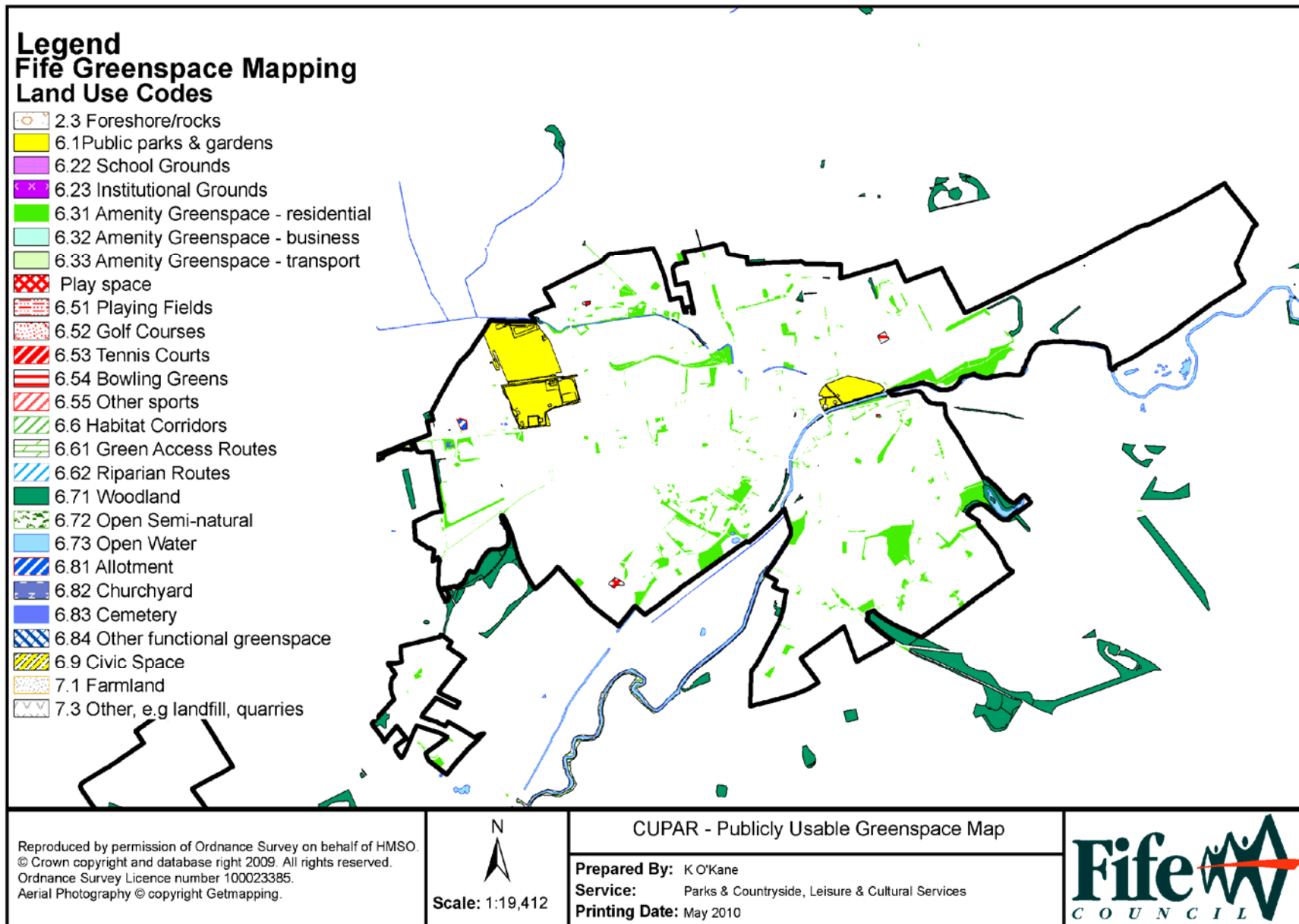


Figure 3 – map of all the land types classified as part of the greenspace mapping

Figure 5 – map of Cupar showing the publicly usable greenspace



## **Quality**

Quality greenspace is defined as greenspace which is 'fit for purpose' - meaning it is in the right place, readily accessible, safe, inclusive, welcoming, well maintained, well managed and performing an identified function.

454 (above 0.4 hectare in size) Publicly usable greenspace sites in 74 settlements were selected to be audited for quality.

0.4 hectare sized spaces were chosen as this is the size of space where they become multi-functional .

The five Greenspace Scotland quality indicators set out in figure 7 were used to assess the sites.

The average score of a site was 60% and this was used as the baseline from which to assess all sites, figure 8 shows the sites that were assessed in Cupar.

Figure 9 graphically shows the results for each settlement and the ratings used.

**Figure 7 - Greenspace quality criteria or indicators**



1. Accessible, and connected greenspaces:

- be well located close to a community
- meet Disability Discrimination Act requirements and disabled user needs
- provide quality paths that are fit for purpose
- connect with other transport modes
- allow movement in and between places
- have accessible entrances in the right places
- offer connecting path network and signage



2. Attractive and appealing places:

- be attractive, with a positive image
- provide an attractive setting for urban areas
- contain quality materials, equipment and furniture
- contain attractive plants and landscape elements
- have welcoming boundaries and entrance areas
- provide facilities in clean, safe and usable condition
- have low levels of litter and adequate bins
- be well maintained



3. Biodiverse supporting ecological networks:

- contribute positively to biodiversity, water and air quality
- have areas large enough to sustain wildlife populations
- offer a diversity of habitats
- be part of the wider landscape structure and setting
- provide a balance between habitat protection and public access



4. Greenspace should promote activity, health and well being

- provide places for a range of outdoor activities
- provide diverse play, sport and recreational opportunities
- provide places for social interaction
- contain appropriate, high quality facilities to meet user needs (e.g. picnic areas, toilets, parking)
- contain appropriate facilities for location and size
- be carefully sited facilities for a range of ages
- be adaptable to changing needs and uses

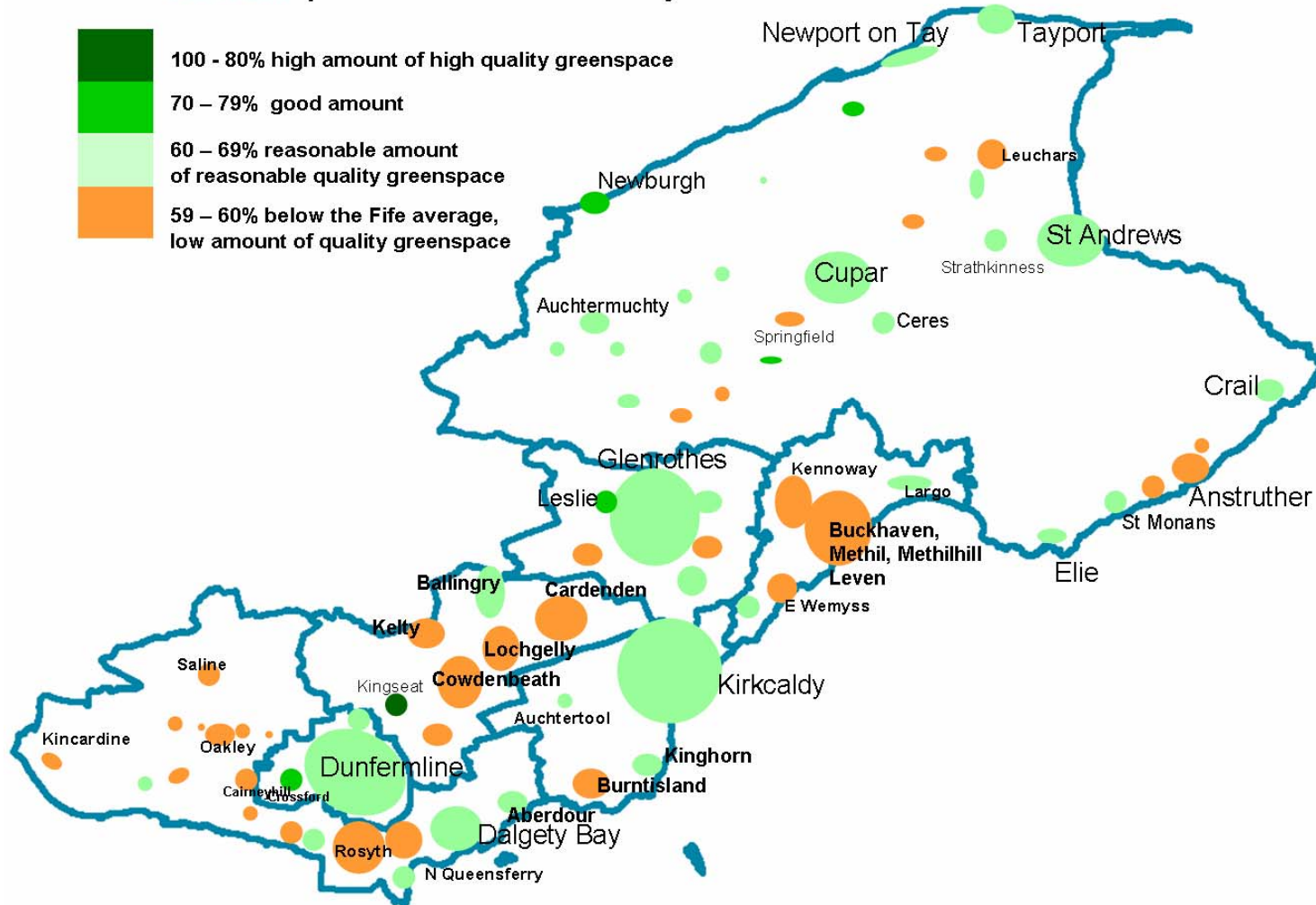


5. Greenspace should have community benefits:

- be safe and welcoming
- have good levels of natural surveillance
- show no evidence of anti-social behaviour
- have appropriate lighting levels
- have a sense of local identity and place (e.g. public art, natural and heritage features)
- provide good routes to wider community facilities
- contain distinctive and memorable places
- cater for a range of functions and activities
- provide opportunities for involvement in management and decision making

Figure 9 - a map showing graphically the quality rating of each settlement against the audit standard

### Fife Greenspace Audit – Quality Assessment



## Access

Access is defined for the audit as the walkable distance from a domestic property to a publicly usable greenspace.

There is no national standard for auditing access. The audit developed for this audit is based on walking distance from a domestic property to a neighbourhood greenspace.

The standard set was 250m walking distance from a 0.2 hectare publicly usable greenspace. The distance is based on research carried out by Matthews<sup>33</sup> on the ability of children to walk a reasonable distance in their neighbourhood. The walking range of a girl of 8 was used, this was 250m.

0.2 hectare sized spaces were chosen as this is the size of space where activities start to happen for example informal football.

Figure 11 shows the access map of Cupar, this uses GIS technology to calculate the number of properties within 250m of a greenspace. 60% was average result for all settlements and this was used as the baseline to assess all settlements.

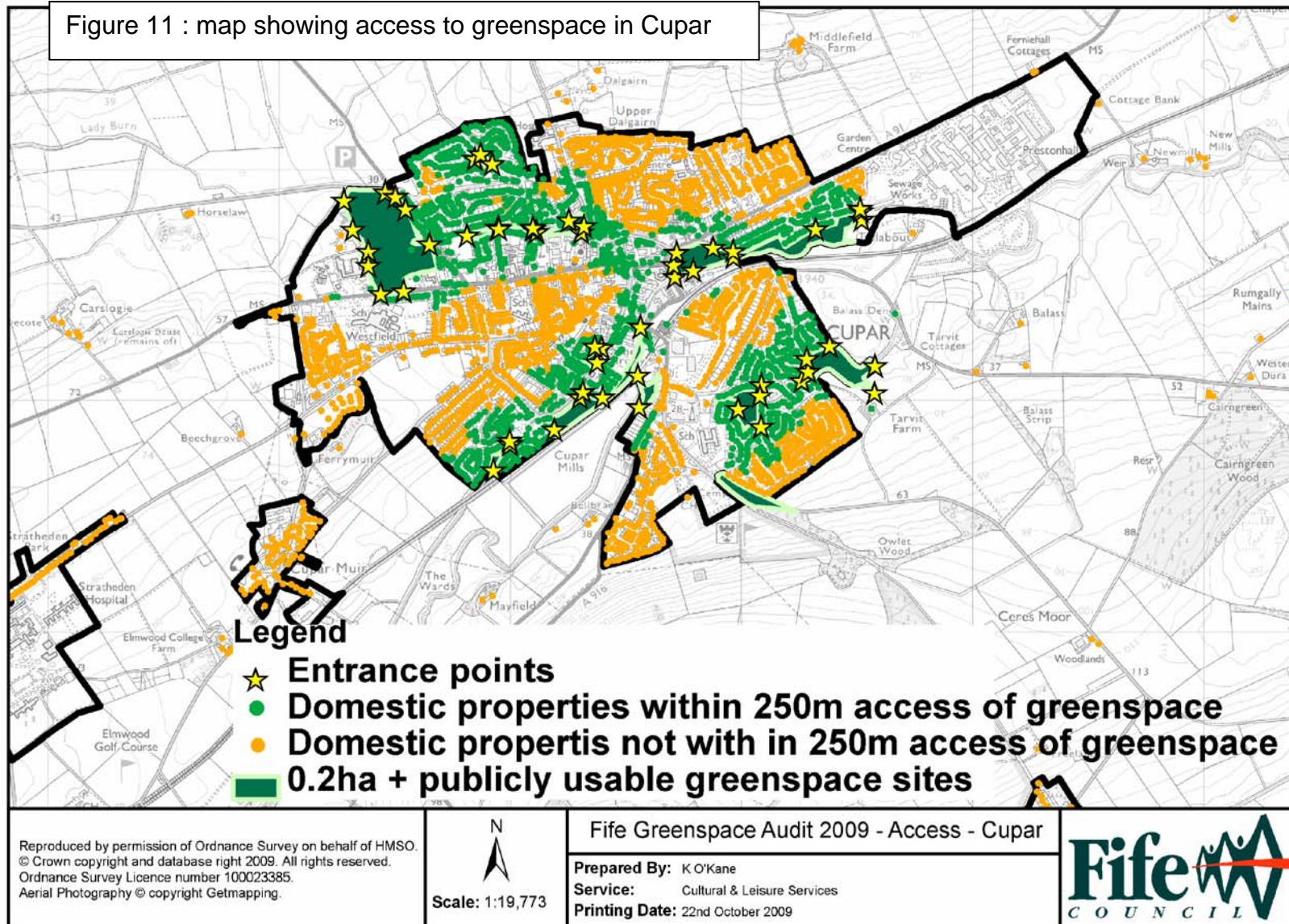
Figure 12 graphically shows the results for each settlement and the ratings used.



Figure 10 : photograph of children playing informal football in a neighbourhood greenspace, Pitteuchar, Glenrothes

---

<sup>33</sup> MATTHEWS, M.H. 1987. Gender, Home Range and Cognition. *Trans. Inst. Brit. Geogs. New Series* 12: 43-56.





## **Greenspace Networks**

To assess the greenspace resource in a settlement all three audit elements need to be taken into account. The term greenspace network is used in the Fife Greenspace Audit to define this assessment.

Greenspace Networks were assessed at three different geographic scales, settlement, Area Committee and an assessment of Fife.

Figure 13 graphically shows the Greenspace Network of each settlement.

Many settlements have mixed results, but this does not necessarily mean this is a negative rating of the town or village.

For example in Cupar the quantity of space and access are below average. The amount of good quality greenspaces in the town will compensate for the other indicators.

Using the results from each settlement, the population of Fife living in settlements with reasonable access to reasonable quality greenspace was calculated, this was 59%.

Figure 13 - a map showing graphically the network rating of each settlement against the audit standard

### Fife Greenspace Audit – Greenspace Network Assessment

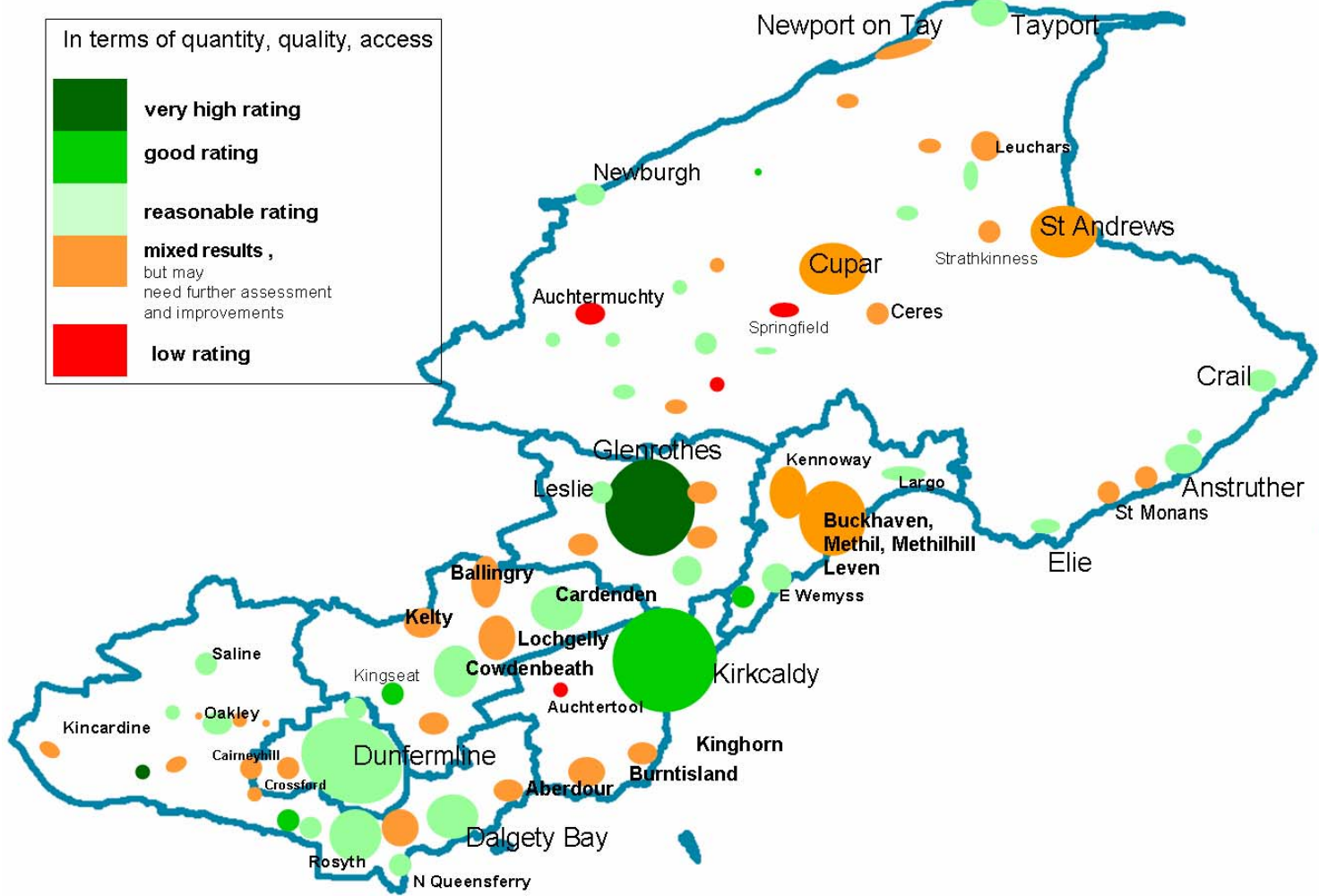


Figure 11 – map of all settlements with greenspace network grad

## 4 Fife wide findings

### 4.1 Fife wide findings

The main finding of the Greenspace Audit was that 59% of the residents had access to quality greenspace. The result shows that improvement is needed if the majority of the population have good access to quality greenspace.

Results varied across Fife:

- Glenrothes had high ratings for quantity, quality and access. The high ratings for quantity and access may be due to its origins as a 'New Town' planned, developed from the 1950's to the 1980's.
- Kirkcaldy and Dunfermline have good networks but there are areas of the towns that would benefit from improvements to the quality and access to greenspace with below average results. Kirkcaldy had 3 good quality parks and Dunfermline had a very good network in the town centre.
- In Levenmouth and Cowdenbeath Areas, the towns and villages have good quantities of greenspace and residents had easy access to greenspace. Some of the greenspaces in the towns and villages would benefit from quality improvements.
- There were also clear links to quality of space and social inequality . In social inequality areas such as Methil / Buckhaven / Kennoway, Ballingry, Lochgelly, Templehall, Sinclairtown, Kirkcaldy, the majority of spaces were low quality.
- In North East Fife all the settlements had good quality greenspace but some of the towns and villages would benefit with increased quantities and access to greenspace.
- In South West Fife due to the rural and urban nature of the area, results were diverse. Many of the settlements had reasonable quantity, quality and access to greenspace and there were other settlements where it would be beneficial to increase quantity, quality and access to greenspace.

### 4.2 Public consultation

The People's Panel survey was used to gauge perceptions on greenspace. The People's Panel is run by Fife Council, 3,000 people are on the panel, members are required to fill in questionnaires 4 times a year. This consists of various ages above 16 of both gender and spread through out all the settlements. In the November 2007 survey 984 people from 93 settlements completed the

questionnaire . The number of people responding varied with the size of population, 157 respondents where from Kirkcaldy (population 48,108), 36 respondents where from St Andrews (population 16,596) and two respondents where from Low Valleyfield (population 155 ).

The questionnaire was divided into 5 publicly usable greenspace types, which were parks, beaches and coast, play areas, woodlands, open spaces.

Rate the overall appearance	Rate the standard of maintenance
How safe do you feel when visiting	How often do you visit
How do you travel to the space	Main reasons for visiting
List any improvements needed in the space	

At the top of each greenspace type questionnaire a space was provided to name a greenspace. For each greenspace type the same questions were asked.

## Public consultation findings

The People's Panel differs from the other parts of the audit, and it provides important evidence on how the public use and rate greenspace.

### Key points

- Only 7% of adults visit a greenspace daily, 28% adults surveyed visit once a week and 41% visit once a month.
  - The car is the main method of travel to a greenspace 49%, and the result for walking was 41%. Only 2% of respondents travelled by bicycle.
  - Results varied in different types of space, 69% travel to beaches by car and 61% walk to a play area.
  - The most common activity was going for a walk.
  - 54% thought that greenspaces were well maintained
  - 67% thought that the appearance of greenspaces they used were good
  - 60% felt safe in the greenspaces they use
  - Dog fouling and litter were seen as most in need of improvement in greenspaces.
  - Respondents had the opportunity to name specific greenspaces to comment on. 580 sites were commented on but only 22 spaces had over 20 comments. The most commented on space was Pittencrieff Park with 167 comments.
- The results for appearance, maintenance and safety were combined to give an indication of which sites were rated the highest by the respondents these were  
St Andrews West Sands, Elie beach,  
Ladybank Woods, Craigtoun Park,  
Haug Park Cupar, Pittencrieff Park Play Area,

Aberdour Silver Sands, Pettycur beach Kinghorn,  
Lochore Meadows,  
Pittencrieff Park Dunfermline

## 5 Challenges

The evidence from the Greenspace Audit show that there are three main challenges to be tackled.

### **Increasing access to publicly usable greenspace**

Many settlements have good quantities of greenspace, other had levels below the Fife average. Health research shows that having easy access close to residential properties is good for health and well being. Children need space to play.

Increasing access to greenspace is challenging, Development Planning has a key role in protecting and zoning new greenspace. New standards for the quantity and the pedestrian access need to be created and should be based on the audit standards and these be included in new supplementary planning guidance.

Different types of public land could aid the increase, such as school grounds and burial grounds being more accessible. Better design and layout of engineered drainage ponds could make them publicly usable. Improved countryside path networks around villages can help as well.

### **Improving the quality of greenspaces**

Improving the quality of greenspace is another challenge. There are many spaces that are of low quality and need improving. The audit also showed the link between areas of social inequality and low quality greenspace.

Improving and sustaining quality will be challenging in the next five years with reduced public funding. Partnership working will be more important especially involvement with communities. There have been improvements to greenspace throughout Fife in the last ten years and the successful examples have involved support from the nearby community.

### **Increasing the use of greenspace**

The People's Panel survey showed that a third of adults are using greenspace on a weekly basis and the main use was walking. The survey did not cover children and evidence is needed on their use of greenspace as well. Greater use of greenspace can have a whole range of benefits, for health and well being, 'green' travel and for community cohesion. Another challenge therefore is to increase the use of greenspace.

## 6 Committee Area findings and priorities

This section of the strategy sets out the findings of the audit and priorities for each settlement in the next five years between 2011 - 2016. 85 settlements in the seven areas of Fife were audited. 460 greenspaces were audited also. Many towns and villages have good networks of greenspace. For some settlements the results were mixed and would benefit from improvements to quantity, quality and access. The priorities are set out for each area, and cover specific greenspaces and settlements.

The priorities have been rated in terms of high, medium and low priorities. No specific costs or timescales have been included, this will be the next stage of the strategy. In terms of increasing the amount of greenspace in specific settlements, this is dependent on development planning. The lists of actions should also be a record to measure progress in increasing access to quality greenspace.

<b>Priorities for action</b>		
H	high priority	Action should be taken to improve these spaces within the next five years, that is 2011 - 2016 .
M	medium priority	Beneficial to improve or start to improve in the next five years, that is 2011-2016.
L	low priority	The settlements or the spaces highlighted are seen as important to improve, but due to challenges and complexities may take longer to improve.

## 6.1 Cowdenbeath Area

### Cowdenbeath Area findings

#### **Ballingry, Lochore Crosshill (2006 population estimate 5,665)**

The town had a reasonable greenspace network, and it is fortunate to be adjacent to Lochore Meadows Country Park which is a high quality greenspace. There are some greenspace in the town which would benefit from improving.

#### **Cardenden & Dundonald (population 5,080)**

The town has a high amount of greenspace and easy access to greenspace. Some of the greenspace would benefit from improvements.

#### **Cowdenbeath (population 11,381)**

The town has a reasonable amount of greenspace and easy access to greenspace. Some of the greenspaces would benefit from improvements.

#### **Crossgates (population 2,018)**

The village has good access to greenspace, Some of the greenspaces would benefit from improvements.

#### **Kelty (population 5,953)**

The town has a good quantity of greenspace. Some of the greenspaces would benefit from improvements.

#### **Kingseat (population 745)**

The village has good access to greenspace and good quality greenspace. The village would benefit from an increase in the amount of greenspace this may be a long term goal and be dependent on development planning.

#### **Lochgelly and Lumphinnans (population 6,834)**

The town has reasonable quantity and access to greenspace. Some of the greenspaces would benefit from improvements. Findings of the audit have aided in the development of a project to improve some of the greenspaces.

<b>Cowdenbeath Area priorities</b>			
settlement	Space(s)	recommendations	priority
Ballingry, Lochore Crosshill	Ivanhoe Avenue greenspace (BALL05)	This is a greenspace on the edge of the town adjacent to Lochore Meadows Country Park. The site would benefit from : changes to the play facilities; tree and shrub planting; grass management; welcoming entrances to Country Park.	H
Ballingry, Lochore Crosshill	Crosshill, King George V Park (BALL06)	The greenspace would benefit from improvements to paths, shrub beds and fencing.	H
Cardenden	Wallsend Park (CARD01)	This park has the potential to be a good quality town park. It is also in a good location close to the leisure centre and main street. The park would benefit from improvements to the play area, woodland, paths, shrub beds. A masterplan is needed to produce detailed costs for the upgrade of this park.	H
Cardenden	Keirs Brae (CARD09)	The greenspace would benefit from tree and shrub planting.	L
Cowdenbeath	Central Park (COWD18)	Central Park could be the town park for Cowdenbeath. Improvements to this park could mean that it is a real asset and contributes to making Cowdenbeath a good place. Pedestrian and visual links should be improved with the Main Street. An event space, large play area, gardens could be created. A masterplan is needed to produce detailed costs for the upgrade of this park.	H
Cowdenbeath	Public Park (COWD04)	This park would benefit from improvements to the path network, removal of toilet block, woodland and shrub beds.	M
Cowdenbeath	Watson Street	Improvements to playing fields	L
Cowdenbeath	Foulford Place (COWD19)	This space has the potential to be a good quality space. This greenspace would benefit from relocation of northern play area, maximising viewpoint above quarry.	M
Crossgates	Manse Road / Westfield greenspace (CROSG01)	This is a space on the west side of the village. This greenspace would benefit from improvements to the planting, fencing.	L
Crossgates	Humbug	A space on the west side of the village, This	L

	greenspace (CROSG03)	greenspace would benefit from improvements to the tree and shrub planting.	
Kelty	Blairadam Park (KELT04)	Blairadam Park is a large park with in the town. The park has the potential to be a good quality town greenspace which would contribute to making Kelty a better place. Improvement of the park has been a focus of the community for many years and the park would benefit from continued improvements. These could include a thinning of woodland, assessment of the location of play facilities, welcoming entrances to the park.	H
Kelty	Kelty Hill (KELT01)	This is a grassed space, that has evidence of anti-social behaviour. Improvements are needed to improve trees and shrubs to make the space more attractive.	M
Kelty	Netherton gardens, greenspace (KELT02)	This is a space at the back of housing. Which is unattractive and not fit for purpose. Improvements are needed to shrub planting, fencing.	L
Kingseat	Settlement wide	There is only 1 hectare of greenspace per 1,000 population this is very low. An increase is needed to increase the quantity to the Fife average of 6 hectares. This may be a long term goal and be dependent on Development planning.	L
Lochgelly	Public Park, Lochgelly (LOCH01)	The Public Park has the potential to be the Town Park for Lochgelly. Over recent years the potential of this has been seen. The park would benefit from a masterplan.	H
Lochgelly	West End Park (LOCH06)	The space is run down, fencing, paths are damaged, there are very few trees and shrubs. The space needs a major upgrade.	M
Lochgelly & Lumphinnans	Hope Street	This is the main greenspace for Lumphinnans. The space would benefit from pitch upgrades	M

## 6.2 City of Dunfermline Area

### City of Dunfermline Area findings

#### Dunfermline (2006 population estimate 45,462)

Dunfermline has a good greenspace network.

The town has a good amount of greenspace, the quantity of greenspace in the town is above average at 7 hectares per 1,000 head of population.

The town has high quality greenspace such as Pittencrieff Park. Some of the greenspaces would benefit from improvements. Duloch Park is of low quality and should be a priority greenspace to improve.

Many parts of the town have easy access to greenspace. Some parts of the town, there is below average access these are Headwell, Garvockhill and parts of eastern Abbeyview.

#### Townhill (population 1,274)

Townhill Country Park is the main greenspace for the village and one of the main greenspace for the City of Dunfermline Area. The Country Park is a good quality greenspace but would benefit from continued improvements

#### Crossford (population 2,539)

Crossford has two good quality greenspaces. These two greenspaces do compensate for the low amount of greenspace in the village. The village would benefit from an increased amount of greenspace, to bring the level up to the Fife average. This would be a long term goal and be dependent on development planning.

### City of Dunfermline Area priorities

settlement	Space(s)	recommendations	priority
Dunfermline	Pittencrieff Park (DUNF39)	Pittencrieff Park is a high quality Major Town Park, due to the strategic importance of this park for Dunfermline and Fife, continued improvements are needed. The heritage lottery bid if successful should address improvements.	H
	Duloch Park (DUNF04)	This has the potential to be a town park for the east of the town with better linkages to the school and shops. The greenspace would benefit from drainage, biodiversity improvements, welcoming entrances and the provision of seats and bins. The future of the cricket area is also an issue. The pond has the potential to be a better resource for environmental education and biodiversity. Calaismuir wood would benefit from, removal of litter in wood, path network in	H

		the wood, woodland management.	
	Public Park (DUNF41)	The Public Park mirrors Pittencrieff Park in size and location to the east of the town centre. The construction of St Margarets Drive, cut the park in two. The road has had implications for the park ever since. The park is cut off from the town centre, there is anti-social behaviour. The park would benefit from pedestrian links to the town centre, relocation of play area, improvements to the path network. Lighting is in need of improvement around the bandstand and recreation facilities below the Carnegie Hall.	H
Dunfermline	Rex Park (DUNF03)	This space would benefit from :relocating the play area due to anti-social behaviour; removing all derelict buildings; tackling rubbish and fly tipping; Repainting portacabin changing rooms.	M
Dunfermline	Lyne Burn (DUNF20)	This greenspace would benefit from improvements to low quality boundary fencing and plant areas of tree and shrub planting.	M
Dunfermline	Towerburn (DUNF38)	An area of semi-natural woodland to the north of the town centre. The wood would benefit from good signage, removal from litter and burn debris, fencing, vegetation encroachment on paths, welcoming entrances.	M
Dunfermline	Crematorium Wood (DUNF42)	Semi-natural woodland adjacent to cemetery. This wood would benefit from improvements to paths and welcoming entrances.	M
Dunfermline	Broomhead Flats (DUNF32)	Open space surrounding blocks of flats. The space could be a good resource for the residents of the flats and would benefit from improvements. These should include new tree, shrub, flower beds, improved play area.	L
Dunfermline	Kingseat Hill (DUNF29)	The greenspace has the potential to be a good local park for this part of north Dunfermline. The space would benefit from a rationalisation and 'tidying up' of temporary buildings, tree and shrub planting.	L
Crossford		There are only 2 hectares of greenspace per 1,000 population this is very low. An increase is needed to increase the quantity to the Fife average of 6 hectares. This may be a long term goal and be dependent on Development planning.	L
Townhill	Townhill Country Park (TOWN01)	Townhill Country Park is an important greenspace in the Dunfermline Area. Townhill Wood has been the focus of works over the last ten years and the results can be seen in the improved path network and wood management. Townhill Park and Ski Centre are currently the focus of a working group and there are emerging plans for these areas. Funding applications which are pending, will benefit from	H

		this site being recognised as a high priority.	
--	--	--	--

## 6.3 Glenrothes Area

### Glenrothes Area findings

#### Glenrothes ( 2006 population estimate 38,927)

The town of Glenrothes has a highly rated greenspace network. The quantity of greenspace is 18 hectares per 1,000 head of population compared to 6ha per 1k average. This is one of the highest levels of any settlement in Fife.

The majority of the greenspaces surveyed were of good quality.

84% residents live 250m to a greenspace. This is one of the highest levels of access in Fife.

Glenrothes town centre has no publicly usable greenspace, the centre is composed of a covered shopping mall and car parking. Creation of greenspace will add to the quality of the centre and evidence from other areas show that it can have an economic benefit too.

#### Coaltown of Balgonie (population 1,009)

The village would benefit from increasing the amount of greenspace, this may be a long term goal and be dependent on development planning.

#### Kinglassie (population 1,341)

Kinglassie has a reasonable greenspace network, the village would benefit from improvements to two of its greenspace ( Kinglassie Park, Recreation Ground)

#### Leslie (population 3,092)

Leslie has a good greenspace network. There are two good quality greenspaces within the town boundary and it is adjacent to Riverside Park.

#### Markinch (population 2,360)

Markinch has reasonable quality greenspaces within the town boundary and is adjacent to Balbirnie Park which is a high quality greenspace.

#### Milton of Balgonie (population 355)

Milton of Balgone would benefit from improvements to King George V Park

#### Star (population 344)

The village would benefit from increasing the amount of greenspace to the Fife average. This is a long term goal and will be dependent on development planning.

**Thornton (population 1,961)**

Thornton has a good greenspace network. The Memorial Park is a good quality greenspace.

**Glenrothes Area priorities**

settlement	Space(s)	action	priority
Glenrothes	Riverside Park (GLEN05)	Riverside Park is a good quality Major Town Park. The park was zoned as part of the 1952 masterplan for the new town. Although it is in the geographical centre of the town due to valley slopes and a busy road it is cut off from the town centre close by. The park would benefit from stronger pedestrian links to the town centre. The park has had continuous improvements over the years, but improvements are still needed. The park would also benefit from public toilets, removal of rhododendron and woodland management.	H
Glenrothes	Gilvenbank Park (GLEN27)	This is a large open space in the north of the town. The space would benefit from woodland management to improve biodiversity and user security, and an improved path network.	H
Glenrothes	Caskieberran Adjacent to Caskieberran Primary school (GLEN04)	The space would benefit from removing of overgrown shrubs to improve user security.	L
Glenrothes	Tanshall Park (GLEN17)	The park would benefit from improvements to tree and shrub beds to improve user security.	M
Glenrothes	Balbirnie park	Balbirnie Park is a good quality park on the eastern edge of the town. The walled garden has the potential to a new community food growing space.	M
Coaltown of Balgonie		There are only 3 hectares of greenspace per 1,000 population this is very low. An increase is needed to increase the quantity to the Fife average of 6 hectares. This may be a long term goal and be dependent on Development planning.	L
Kinglassie	Kinglassie Park (KINGL01)	The park would benefit from improvements to paths, fencing, litter removal.	L
Kinglassie	The Recreation Ground (KINGL 02)	This space has the potential to be a good local park for the village. The space would benefit from improvements to shrub planting, grafitti removal, play equipment and path	M

		surfacing.	
Markinch	Markinch Hill greenspace (MARK02)	Greenspace adjacent to woodland. The greenspace would benefit from improvements to entrances, paths, shrub beds.	H
Milton of Balgonie	King George V Park (MILT02)	This space has the potential to be a good local park for the village. The space would benefit from improvements to tree and shrub planting, play equipment, seating and fencing.	M
Star		There is only 1 hectare of greenspace per 1,000 population this is very low. An increase is needed to increase the quantity to the Fife average of 6 hectares. This may be a long term goal and be dependent on Development planning and investigating whether other land can be publicly accessible.	L

## 6.4 Kirkcaldy Area

### Kirkcaldy Area findings

#### Kirkcaldy (population 48,108)

The town of Kirkcaldy has a good greenspace network.

The town has a good amount of greenspace. The quantity of greenspace is 13 hectares per 1,000 head of population compared to 6ha per 1k average.

The town has some high quality greenspaces such as Beveridge Park, which in July 2010 was awarded a Green Flag. There are areas of the town which would benefit from improvements to the quality of greenspaces, such as in Templehall and Gallatown / Sinclairtown.

In the north west part of the town, including Dunnikier, Templehall and Strathallan there is a high percentage of residential properties that have a short walking distance to a greenspace. In Sinclairtown, Gallatown, Hayfield and Linktown there is a below average percentage of properties with a short walking distance to greenspace.

Gallatown and Sinclairtown were the only parts of the town where quantity, quality and access were below average.

#### Auchtertool (population 376)

King George's Field is a good quality greenspace. The village would benefit from increased quantity and access to greenspace. A long term goal should be to bring the quantity and access levels up to the Fife average, this may be dependent on development planning .

**Burntisland (population 5,735)**

The town has a reasonable greenspace network. Some greenspaces would benefit from improvements.

**Kinghorn (population 2,976)**

Kinghorn has a reasonable greenspace network. Kinghorn Loch, Pettycur Bay and the Coastal Path are good quality greenspaces around the village.

**Kirkcaldy Area priorities**

settlement	Space(s)	action	priority
Kirkcaldy	Gourlay Street Greenspace (KIRK42)	This space would benefit from improvements to change the neglected state of the kickabout area.	H
Kirkcaldy	Gallatown Park (KIRK04)	This is a Local Park in the north of the town, the community around the park have for some time campaigned for improvements to the park. A new play area was installed. The park would benefit from tackling anti-social behaviour, a community garden space, welcoming entrances, shrub and flower planting.	H
Kirkcaldy	Wilson Avenue (KIRK06)	This is a local park that would benefit from improvements to the basic infrastructure of the park, such as shrub, flower planting, lighting, seating, signage.	L
Kirkcaldy	Valley Gardens (KIRK15)	This greenspace would benefit from improvements to its structure and fabric which would include improvements to the play area, football pitch, tree, shrub and bulb planting, seating, and path network.	M
Kirkcaldy	Millenium Park (KIRK17)	There are two separate spaces divided by a fence and owners. The spaces would benefit from better linkages. The Millenium Park is in need of refurbishment, to the wildlife planting, sensory garden and play area.	M
Kirkcaldy	Inchgarvie Road greenspace (KIRK28)	This is a large 5 hectare grassed open space greenspace, with no facilities or features. This space would benefit from a path network, changes to grassland management, woodland planting.	H
Kirkcaldy	Rabbit Braes (KIRK31)	Rabbit Braes has had community involvement over many years. The space would benefit from improvements to the woodland for user security.	M

Kirkcaldy	Ravenscraig Park (KIRK09)	Ravenscraig Park is a good quality, historic town park. The park has been the focus of continued improvements over the years, recently a new large play area has been installed. The park would benefit from improvements to paths, the coastal wall, entrances, improvements to tennis area and the walled garden.	H
Kirkcaldy	Denfield (KIRK07)	The space could have the potential to be a good resource adjacent to the new hospital. A new pavilion and improvements to the pitches will improve the site. The site would also benefit from new tree, shrub, flower planting, welcoming entrances, resurfaced paths, new play area to increase wider community appeal.	L
Kirkcaldy	Pathhead Sands (KIRK08)	Pathhead Sands is an important coastal greenspaces within the town. The space would benefit from improvements to its entrances, road entrance, parking, path surfaces, picnic areas.	L
Kirkcaldy	Seafield Picnic Area (KIRK44)	This is an important coastal greenspace at the south of the town and as a space adjacent to the coastal path. The space would benefit from improvements to site facilities such as parking bays, road, grass areas.	H
Burrtisland	Red Mud Pond (BURN07)	This is a large open grassed space with views over the Forth. The space would benefit from improvements to the path network and coastal access, grass management and is a potential site for new sports pitches.	M
Burrtisland	Burrtisland Links (BURN03)	Burrtisland Links is a good quality historic park. The park would benefit from continued improvements, such as reorganisation of play facilities, signage, seating, tree, shrub and flower planting.	M
Auchtertool		There is only 1 hectare of greenspace per 1,000 population this is very low. An increase is needed to increase the quantity to the Fife average of 6 hectares. This may be a long term goal and be dependent on Development planning.	L

## 6.5 Levenmouth Area

### Levenmouth Area findings

#### **Buckhaven, Methil & Leven (2006 population estimate 24,9420)**

Buckhaven, Methil & Leven had a reasonable quantity of greenspace and access is below average.

Quality varies across the settlement in the eastern part, Letham Glen, Silverburn and the Promenade are all good quality greenspaces. Many of the spaces in Methil and Buckhaven would benefit from improvements. The findings of the audit have aided in work being carried out to a number of greenspaces.

#### **Coaltown of Wemyss (population 517)**

Coaltown of Wemyss has a good greenspace network for this size of village.

#### **East Wemyss (population 1,754)**

Quantity and access to greenspace is good. Some greenspaces would benefit from improvements.

#### **Kennoway & Windygates (population 6,529)**

The amount of greenspace and walkable access to greenspace in the town is reasonable. There are some greenspaces that would benefit from improvements.

#### **Lundin Links and Lower Largo (population 2,024)**

Lundin Links and Lower Largo have good greenspace network for the size of these villages. The beaches and the harbour are quality public spaces.

#### **West Wemyss (population 237)**

The village has a good greenspace network, with a high quantity of greenspace and all properties having easy access.

#### **Upper Largo (population 459)**

The village could not be properly be assessed due to the amount of greenspace with in the settlement boundary and the absence of ½ acre sites for quality and access assessment.

<b>Levenmouth Area priorities</b>			
settlement	Space(s)	recommendations	priority
Buckhaven	The Foreshore BMML02	This is a linear space along the foreshore. Rock armouring along the shore has created a wall effect and the space would benefit from better shore access.	M
Buckhaven	Toll Park BMML19	The Levenmouth Area Committee approved money to upgrade the paths in the park. The audit assessment of this space was that it would benefit from improvements to planting, seating and the play area.	H
Buckhaven	Sandwell Park BMML11	Park infrastructure (paths, planting, seating, play area) needs improved to make this space have wider community benefit	M
Methil	Kirkland BMML22, Methmill BMML04, Methil Brae BMML01, Inner Leven BMML03, Dam Wood BMML24, SawMill BMML28	The greenspace along the Methil side of the River Leven have the potential to be a riverside park. For this to happen many improvements would need to happen, such as defined and welcoming entrances, a path network and vegetation management. The Levenmouth Area Committee has agreed to investment in upgrading the path along part of the river.	H
Methil	Savoy Park BMML23	This is a centrally located space with in Methil and Buckhaven. The space is dominated by sports pitches. The site would benefit from improvements that would create a wider community benefit such as welcoming entrances, tree, shrub and flower planting, seating, path network.	H
Methil	Lilac Bank BMML25	This is an open space surrounded by houses, high levels of antisocial behaviour. The site would benefit from improvements to make it a more attractive and beneficial site for the residents.	H
Leven	Silverburn BMML18	Silverburn is a good quality park outside Leven. The park would benefit from reuse of buildings.	H
Leven	Montgomery Drive BMML17	This space would benefit from restructuring of the woodland strip to improve use security and natural surveillance.	M
Leven	Toll Park BMML19	The park would benefit from improvements to its facilities and features.	H
Leven	Letham Glen BMML28	This is an important greenspace in the area and	H

		would benefit from continued improvements for example to the woodland in the northern part.	
Leven	Christie Park BMML08	This grass open space would benefit from improvements to the play area, fencing, tree, shrub planting.	M
East Wemyss	Wemyss Den EAST05	This semi-natural woodland would benefit from : removal of rubbish, fence repairs, and signage to discourage fly tipping.	M
East Wemyss	The Barony EAST06	This is a large featureless grass space. The lack of basic infrastructure ( boundary features, planting, paths, seating) reduces use of the greenspace.	M
East Wemyss	Kingslaw Den EAST07	This semi-natural woodland would benefit from : removal of litter, consider removing play equipment, resurfacing of paths.	M
Kennoway	Cotlands Park (KENN01)	Cotland Park has the potential to be a good town park for Kennoway. The park would benefit from improvement such as : welcoming entrances, well surfaced circular path network, upgraded play facilities for all ages, resurfaced blaes, pitch, directional signage from town centre, internal directional signage, colourful amenity shrub planting. A review of the existing tree and shrub planting should be undertaken to remove vegetation that obscures views and attracts anti-social behaviour.	H
Kennoway	Kennoway Den KENN06	Kennoway Den has been the focus of much community involvement over the years. This is a woodland that would benefit from continued improvements such as : removal of litter, vegetation management in the summer months to improve user security and visibility, path improvements. Kennoway Den, has anti-social behaviour issues and path and planting need to be improved. This is an important greenspace in the area and needs to be improved.	H

## 6.6 North East Fife Area

### North East Fife Area findings

#### **Anstruther (2006 population estimate 3,600)**

All properties are with a short walking distance of a greenspace. The amount of greenspace is below the Fife average and a long term goal should be to increase the quantity of greenspace and be dependent on development planning.

#### **Auchtermuchty (population 2,068)**

The village has two reasonable quality greenspaces. The village would benefit from increasing the amount of greenspace as this is below the Fife average. This may be a long term goal and be dependent on development planning. Changes to public land such as burial and school grounds could aid in increasing the amount of greenspace.

#### **Arcroach (population 103),**

The village has a high rating for access. All properties are with a short walking distance of a greenspace.

#### **Balmerino (population 43)**

The village has a high amount of greenspace with in its boundary

#### **Balmullo (population 1,466)**

There is good access to countryside around the village. The results of the audit showed that the village would benefit from increased quantity of greenspace, this may be a long term goal and dependent on development planning. Changes to public land such as burial and school grounds could aid in increasing the amount of greenspace.

Ceres (population 1,009)

Bow Butts is a good quality and very historic greenspace in the village. The results of the audit showed that the village would benefit from increased quantity of greenspace, this may be a long term goal and dependent on development planning. Changes to public land such as burial and school grounds could aid in increasing the amount of greenspace.

#### **Colinsburgh (population 382)**

The village could not be properly be assessed due to the amount of greenspace with in the settlement boundary and the absence of ½ acre sites for quality and access assessment. The recreation ground and woodland to the north of the village will contribute to greenspace provision.

#### **Collessie (population 91)**

Collessie has a good greenspace network. There is a good amount of greenspace for the size of village, all properties are with in easy reach of a greenspace. The playing field is a great asset for this size of village.

**Craigrothie (population 183)**

The village could not be properly be assessed due to the amount of greenspace with in the settlement boundary and the absence of ½ acre sites for quality and access assessment.

**Crail (population 1,748)**

Crail has a good greenspace network. There is a good amount of greenspace for the size of village, all properties are with in reasonable reach of a greenspace. There are good quality greenspaces in the village boundary and the coast and beach are a great asset.

**Cupar (population 8,673)**

Cupar has a number of good quality greenspaces. The quantity and access to greenspace was found to be below the Fife average. The town would benefit from increased amounts of greenspace and improving access. improvements such as these will be long term goals and are dependent on development planning. Changes to public land such as burial and school grounds could aid in increasing the amount of greenspace.

**Dairsie (population 390)**

All properties are within a short walking distance of a greenspace.

**Dunshalt ( population 319)**

The village has a reasonable quality greenspace and meets the standard for access. The village would benefit from increased amounts of greenspace and improving access. Improvements such as these will be long term goals and are dependent on development planning. Changes to public land such as burial and school grounds could aid in increasing the amount of greenspace.

**Elie and Earlsferry (population 962)**

The beaches and the coastal spaces contribute to making this villages have a good greenspace network.

**Falkland (population 1,189)**

Falkland Estate on the edge of the village contributes to making this settlement have a good greenspace network.

**Freuchie (population 1,179)**

There is reasonable access to greenspace in the village. The village would benefit from increased amounts of greenspace and improving access. Improvements such as these will be long term goals and are dependent on development planning. Changes to public land such as burial and school grounds could aid in increasing the amount of greenspace.

**Gateside (population 199)**

The village would benefit from increased amounts of greenspace and improving access. Improvements such as these will be long term goals and are dependent on development planning. Changes to public land such as

burial and school grounds could aid in increasing the amount of greenspace.

**Gauldry (population 691)**

The recreation ground is a good quality greenspace. The village would benefit from increased amounts of greenspace and improving access. Improvements such as these will be long term goals and are dependent on development planning. Changes to public land such as burial and school grounds could aid in increasing the amount of greenspace.

**Guardbridge (population 710)**

The village has a good greenspace network, due to the amount of greenspace and the quality of greenspace with in the village boundary.

**Kettlebridge (population 619)**

The village would benefit from increased amounts of greenspace. Improvements such as these will be long term goals and are dependent on development planning. Changes to public land such as burial and school grounds could aid in increasing the amount of greenspace.

The park would benefit from improvements to its features.

**Kilconquhar (population 190)**

The village could not be properly be assessed due to the amount of greenspace with in the settlement boundary and the absence of ½ acre sites for quality assessment.

**Kilrenny (population 192)**

The village has a good greenspace network, due to the good quantity , quality and access to greenspace.

**Ladybank (population 1,582)**

The village has a good greenspace network. All properties have easy access to greenspace with in the village. Well Park would benefit from some improvements.

**Letham (population 148)**

The village has a good greenspace network. The village was one of the smallest in terms of population, the settlement is very fortunate to have a playing field of this size.

**Leuchars (population 2,943)**

There is good access to greenspace in the village. The village would benefit from increased amounts of greenspace. Improvements such as these will be long term goals and are dependent on development planning. Changes to public land such as burial and school grounds could aid in increasing the amount of greenspace. Greenspace in the village could benefit from improvements to their features.

**Luthrie (population 59)**

The village has a good greenspace network. The village was the smallest in terms of population audited, the settlement is very fortunate to have a greenspace beside the community centre.

**Newburgh (population 2,170)**

The village has a good greenspace network, there is a good quantity of greenspace within the village boundary. The public park and the west shore greenspaces are good quality spaces.

**Newport-on-Tay and Wormit (population 4,342)**

The town has a good greenspace network. Five greenspaces surveyed were all good quality.

**Pittenweem (population 1,650)**

The village has a good greenspace network due to the quality spaces along the shore such as the East and West Braes, the harbour and the shore front.

**Pitlessie (population 325)**

The playing field is a good quality greenspace in the village.

**Springfield (population 1,106)**

The village would benefit from increased amounts of greenspace. Improvements such as these will be long term goals and are dependent on development planning. Changes to public land such as burial and school grounds could aid in increasing the amount of greenspace.

The cross a greenspace in the village could benefit from improvements to its features.

**St Andrews (population 16,596)**

The town has a number of good quality greenspaces such as the Botanic Gardens, Lade Braes and Blue flag beaches. There are greenspaces in the town that would benefit from improvements. The quantity of greenspace and access to greenspace is below average in the town. The town would benefit from an increase in quantity and access to greenspace. University land has the potential to be good accessible publicly usable greenspace.

**St Monans (population 1,335)**

The village has a good greenspace network due to the quality spaces along the shore. The Common would benefit from improvements to its features.

**Strathkinness (population 925)**

Magnus Muir is a semi natural woodland and good quality greenspace just outside the village boundary. It would be beneficial if the path from the settlement could be improved.

**Strathmiglo (population 925)**

The village has a good greenspace network, all properties are good quality, and properties are within easy reach of greenspace. King George V Park is a good quality greenspace.

**Tayport (population 3,871)**

The town has a good greenspace network, this is due to the quantity and

quality of greenspace in the town.

<b>North East Fife Area priorities</b>			
settlement	Space(s)	recommendations	priority
Auchtermuchty		The audit results for Auchtermuchty were that it had very low levels of quantity and access to greenspace. Improvements to quantity and access are dependent on development planning. School Grounds and burial grounds being more accessible could also aid improvement.	L
Balmullo		There are only 4 hectares of greenspace per 1,000 population this is below the Fife average. An increase is needed to increase the quantity to the Fife average of 6 hectares. Improvements to quantity and access are dependent on development planning.	L
Ceres		There are only 3 hectares of greenspace per 1,000 population this is low. An increase is needed to bring the quantity up to the Fife average. Improvements to quantity and access are dependent on development planning.	L
Cupar	Duffus Park CUPA10	This is the town park for Cupar, it is one of the main sports facilities in the area. The park could be of wider benefit to the community if other parts of the park were improved such as : resurfacing of paths, repair/repainting of buildings, improving play area, reinstatement of a community garden.	H
Cupar		There are only 4 hectares of greenspace per 1,000 population this is below the Fife average. An increase is needed to increase the quantity to the Fife average of 6 hectares. Improvements to quantity and access are dependent on development planning. School Grounds and burial grounds being more accessible could also aid improvement.	L
Gauldry		There are only 2 hectares of greenspace per 1,000 population this is very low. An	L

		increase is needed to increase the quantity to the Fife average of 6 hectares. Improvements to quantity are dependent on development planning.	
Kettlebridge	Park KETT01	This is the main greenspace for the village, the space functions in terms of sports but would benefit from improvements to the basic infrastructure (paths, planting, flowers, seats, play area) to increase use by the wider community.	M
Kettlebridge		There are only 3 hectares of greenspace per 1,000 population this is low. An increase is needed to bring the quantity up to the Fife average. Improvements to quantity are dependent on development planning.	L
Ladybank	Well Park LADY05	This grassed open space is beside and could be a really useful resource for the school. The greenspace would benefit from improvements to paths, planting, flowers, seats, play area.	M
Leuchars	Tutor Road Woodland LEUC02	Semi-natural woodland located near to airforce base. This could be a good quality natural greenspace for the village. The wood would benefit from a surfaced path network and welcoming entrances.	M
Leuchars		There are only 4 hectares of greenspace per 1,000 population this is below the Fife average. An increase is needed to increase the quantity to the Fife average of 6 hectares. Improvements to quantity are dependent on development planning.	L
Springfield		The audit results for Springfield were that it had very low levels of quantity, quality and access to greenspace. Improvements to quantity and access are dependent on development planning. School Grounds and burial grounds being more accessible could also aid improvement.	L
Springfield	The Cross SPRI01	This is the main space for the village, due to the low amount of space in the village it would be beneficial to improve this space. The space would benefit from improvements to paths, planting, flowers, seats, play area.	H
St Andrews	Craigtoun Country Park STAN07	Craigtoun was rated a high quality greenspace in the audit. To remain as a pay to visit park will require significant ongoing investment. Many of the facilities and features need upgrading such as the Dutch Village, toilet block, miniature railway.	H
St Andrews	Botanic	The Botanic is a high quality greenspace.	H

	Gardens	Continued investment is needed to ensure its high quality is maintained.	
St Andrews	Stanks Park STAN13	St Andrews Orchard group have recently planted an orchard in the greenspace and have plans to extend this. The space would benefit from: thinning and clearance of shrub areas to improve user security; improvements to culvert, resurfacing of path.	M
St Andrews	Cairns Den STAN16	This is a semi natural woodland would benefit from improvements to path network and clearance of vegetation beside paths to improve user security.	M
St Andrews	East Bents STAN03	This is an important space adjacent to East Sands and the harbour. The greenspace would benefit from improvements such as : repairs or removal of the toilet block; removal of litter from the river banks; a circular path; changes to grass cutting to improve biodiversity.	M
St Andrews	Kinburn Park STAN09	Kinburn Park has the potential to be a vibrant space with in the town, reorganisation of the spaces in the park could create an outdoor café and events space adjacent to the museum. The park could also benefit from a better path network to aid the walking route from the University into the town.	L
St Andrews	Cockshaugh Park STAN04	This is a good quality greenspace, there are plans for improvements to the sports facilities. The space would benefit from an upgrade of the play area, a pedestrian bridge to link the space with the Botanic Garden.	L
St Andrews	Lade Braes STAN12	Together with the Botanic Gardens and Cockshaugh Park, the Lade Braes form an important greenspace corridor for the town. The greenspace would benefit from improvements to the paths, signage and tree works.	L
St Andrews		The amount of publicly usable land in the town not including the university land is below the average for Fife. It would be beneficial to increase this to the Fife average.	L
St Monans	The Common STM01	This is the main greenspace for the village. The park could be of wider benefit to the community if improvements were made such as : replacing/removing all weathered surface pitch, tree, shrub, flower planting, welcoming entrances.	H

## 6.7 South West Fife Area

### South West Fife Area findings

#### **Aberdour (2006 population estimate 1,664)**

Aberdour has a number of good quality greenspaces. It has a reasonable greenspace network. The village has a reasonable quantity and all the properties are with in a short distance of greenspace.

#### **Cairneyhill (population 2,508)**

All Residential properties are with in a short distance of greenspace. The village would benefit from increased amounts of greenspace. Improvements such as these will be long term goals and are dependent on development planning. Changes to public land such as burial and school grounds could aid in increasing the amount of greenspace. Greenspaces would benefit from improvements to their features.

#### **Carnock (population 799)**

All Residential properties are with in a short distance of greenspace. The village would benefit from increased amounts of greenspace. Improvements such as these will be long term goals and are dependent on development planning. Changes to public land such as burial and school grounds could aid in increasing the amount of greenspace. Greenspaces would benefit from improvements to their features.

#### **Charlestown (population 394)**

The village has a good greenspace network. There is a good quantity of space in the village and properties are within a short distance of greenspace.

#### **Comrie (population 947)**

All Residential properties are with in a short distance of greenspace. The village would benefit from increased amounts of greenspace. Improvements such as these will be long term goals and are dependent on development planning. Changes to public land such as burial and school grounds could aid in increasing the amount of greenspace.

#### **Crombie (population 386)**

Residential properties are with in a short distance of greenspace. The village would benefit from increased amounts of greenspace. Improvements such as these will be long term goals and are dependent on development planning. Changes to public land such as burial and school grounds could aid in increasing the amount of greenspace.

**Culross (population 395)**

The village has a good greenspace network. There is a reasonable a quantity of greenspace and properties are within a short distance of greenspace. The Community Garden and Low Causeway greenspace are good quality greenspaces.

**Dalgety Bay (population 9,884)**

The town has a good greenspace network. There is a good quantity of greenspace, properties are within a short distance of greenspace. The town has a number of good quality greenspaces especially the network of wood and coastal spaces.

**Gowkhal (population 244)**

Residential properties are with in a short distance of greenspace. The village would benefit from increased amounts of greenspace. Improvements such as these will be long term goals and are dependent on development planning. Changes to public land such as burial and school grounds could aid in increasing the amount of greenspace. Clune Road greenspace would benefit from improvements to its features.

**High Valleyfield (population 1,652)**

Residential properties are with in a short distance of greenspace. The playing field greenspace beside the primary school would benefit from improvements to its features.

**Inverkeithing (population 5,265)**

Residential properties are with in a short distance of greenspace. Some of the greenspaces in the town would benefit from improvements to their features.

**Kincardine (population 2,856)**

Residential properties are with in a short distance of greenspace. The village would benefit from increased amounts of greenspace. Improvements such as these will be long term goals and are dependent on development planning. Changes to public land such as burial and school grounds could aid in increasing the amount of greenspace. Some of the greenspaces in the town would benefit from improvements to their features.

**Limekilns (population 983)**

The village has a reasonable greenspace network. The Public Park is a good quality greenspace and an asset to the village.

**Low Valleyfield (population 155)**

The lagoons, Torry Bay and Valleyfield woods are all good greenspaces beside the village.

**Newmills (population 480)**

The Torry Bay shore and woods beside the village are a good greenspace resource for the settlement.

**North Queensferry (population 1,095)**

The village has a good greenspace network. There is a good quantity of greenspace within the village boundary and reasonable quality spaces.

#### **Oakley (population 2,388)**

The village has a high quantity of greenspace and all properties are within a short distance of greenspace. Some of the greenspaces in the town would benefit from improvements to their features.

#### **Rosyth (population 12,865)**

The town has a good quantity of greenspace and access from properties to greenspace is reasonable. Some of the greenspaces in the town would benefit from improvements to their features.

#### **Saline (population 1,128)**

The village has a reasonable greenspace network. There is a good quantity of greenspace within the village boundary and reasonable quality spaces.

### **South West Fife priorities**

settlement	Space(s)	action	priority
Blairhall	Wilson Street greenspace BLAI01	Large greenspace on SE edge of village which benefit from improvements to its facilities such as repainting, replanting shrubs, seating, fencing.	L
Cairneyhill		There is only 1 hectare of greenspace per 1,000 population this is very low. An increase is needed to increase the quantity to the Fife average of 6 hectares. To reach the Fife average may be a long term goal, and is dependent on development planning. Changes to public access to school grounds, burial grounds can aid this. Good countryside path networks around the village can be beneficial too.	L
Cairneyhill	Playing Field space CAIR02	This is an open and exposed space. Due to the low levels of publicly usable greenspace in the village it would be beneficial to improve this space. Additional planting of trees and shrubs would enhance this space.	H
Cairneyhill	Rosemount Park CAIR04	This is a 3 hectare space with in the village boundary. Due to the low levels of publicly usable greenspace in the village it would be beneficial to improve this space. Improvements should be made to the play	H

		area, planting, paths.	
Carnock		There are only 2 hectares of greenspace per 1,000 population this is very low. An increase is needed to increase the quantity to the Fife average of 6 hectares. To reach the Fife average may be a long term goal, and is dependent on development planning. Changes to public access to school grounds, burial grounds can aid this. Good countryside path networks around the village can be beneficial too.	L
Charlestown	East Harbour CHAR02	A greenspace which is part of the East Harbour. This is a great location with views out over the Forth. The area is used informally but it could be a great space along the coast if it was upgraded with surfaced paths, interpretation, seating, welcoming entrances.	L
Crombie		There is only 1 hectare of greenspace per 1,000 population this is very low. An increase is needed to increase the quantity to the Fife average of 6 hectares. To reach the Fife average may be a long term goal, and is dependent on development planning. Changes to public access to school grounds, burial grounds can aid this. Good countryside path networks around the village can be beneficial too.	L
Dalgety Bay		Due to the low amount of sports pitches in the town it would be beneficial to find a new site.	H
Dalgety Bay		Dalgety Bay is a medium sized town in Fife with a population of 9,884. The greenspace network has a good rating but the town does not have a town park. It would be beneficial for the town to have a town park. Greenspaces stretching from the shopping centre at Regents Way to the shore (DALG02, 03, 06, 07), could all be unified to create a park.	L
Gowkhal		There are only 2 hectares of greenspace per 1,000 population this is very low. An increase is needed to increase the quantity to the Fife average of 6 hectares. To reach the Fife average may be a long term goal, and is dependent on development planning. Changes to public access to school grounds, burial grounds can aid this. Good countryside path networks around the village can be beneficial too.	L
Gowkhal	Clune Road GOWK01	This greenspace would benefit from replacement of the play equipment, removing rubbish and repairing fence.	M
High	High	This is a semi-natural wood and is part of the	H

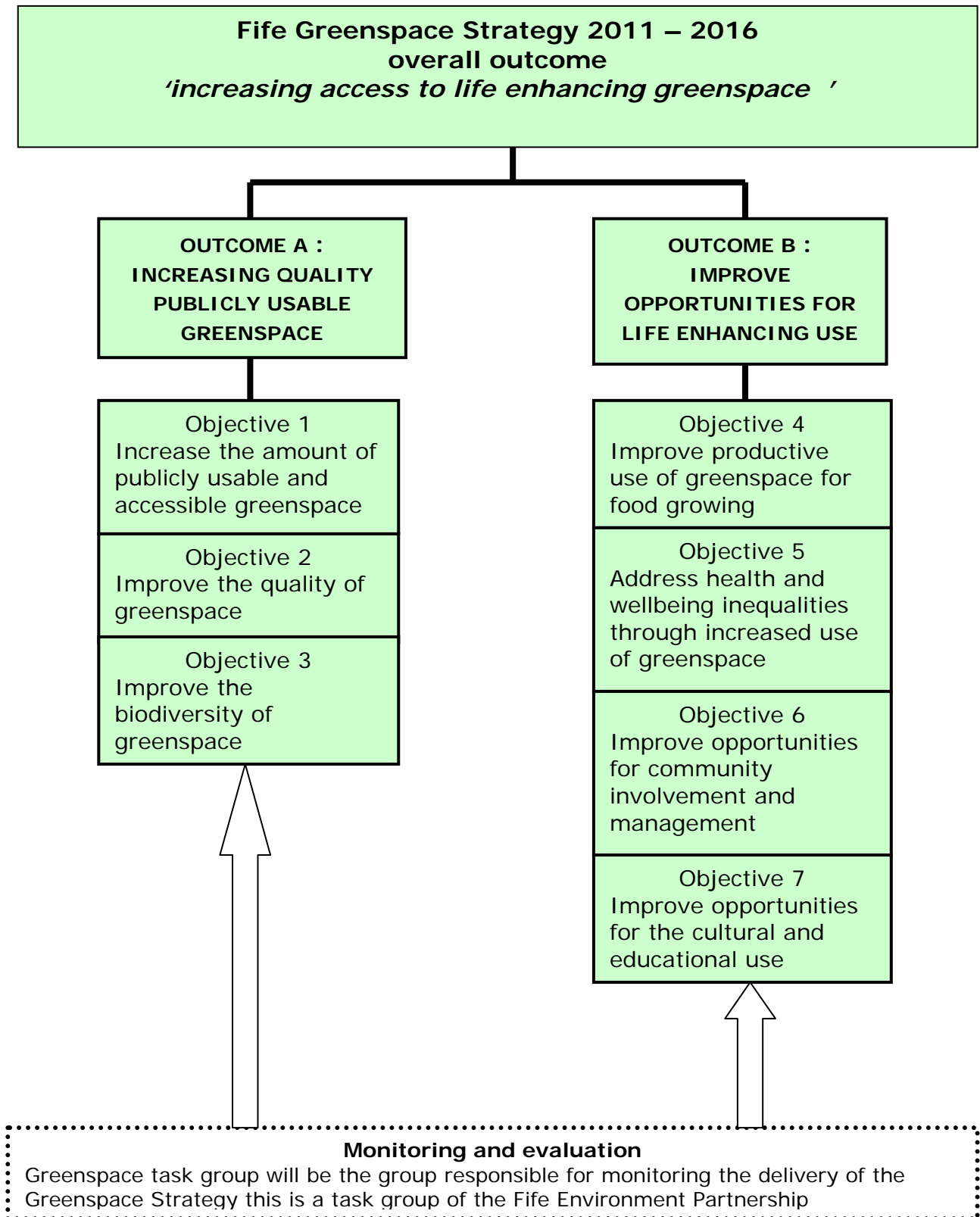
Valleyfield	Valleyfield wood HIGH01	Valleyfield designed landscape. The wood has been the focus over the years of improvements. The wood would still benefit from improvements such as : welcoming entrances from the village, removal of fly tipping.	
High Valleyfield	Playing fields adjacent to school HIGH03	This is a greenspace just north of the school. The space would benefit from tackling anti-social behaviour issues such as litter, graffiti. The site would also benefit from improvements such as : tree and shrub planting.	<b>H</b>
Inverkeithing	Ballast Bank INVE06	Ballast Bank has the potential to be a good quality town park. There is potential to have a promenade along the Bay and Keithing Burn. At present this is a sports and play facility but the space could have wider community benefit. The site would benefit from a masterplan and improvements such as surfaced circular path network, amenity tree and shrub planting, seating areas and upgraded entrances.	<b>H</b>
Inverkeithing	Waggon Road greenspace INVE01	This site would benefit from improvements such as : removing the hardstanding area, thinning of the existing perimeter planting, additional tree and shrub planting, benches and picnic tables although this improvement would be in consultation with community.	<b>M</b>
Kincardine		There are only 3 hectares of greenspace per 1,000 population this is low. An increase is needed to increase the quantity to the Fife average of 6 hectares. To reach the Fife average may be a long term goal, and is dependent on development planning. Changes to public access to school grounds, burial grounds can aid this. Good countryside path networks around the village can be beneficial too.	<b>L</b>
Kincardine	Feregait KINC05	The space would benefit from drainage improvements.	<b>M</b>
Kincardine	Kilbargie Street greenspace KINC03	This space would benefit from additional planting of trees and shrubs.	<b>M</b>
Limekilns	Brucehaven LIME02	This is an attractive greenspace on a rocky outcrop with panoramic views over the Forth. This site would benefit from clarification on public access. This site would also benefit from improvements such as surfaced paths, seating, biodiversity management.	<b>L</b>
Oakley	Carnock Burn	This site would benefit from improvements	<b>H</b>

	greenspace OAKL03	such as litter removal, repairs to fencing, and play area.	
Oakley	Station Road greenspace OAKL04	This space has the potential to be a good quality local park for the village, due to its location beside the shops and health centre. The space would benefit from tree and shrub planting, seating, defined entrances to create a park.	<b>M</b>
Rosyth	Public Park ROSY01	The Public Park has the potential to be a good quality Major Town Park. There has been improvements over the years and community involvement with a new play area. The park would benefit from continued improvement and could be a candidate for a Green Flag. Improvements that would benefit the park are : welcoming entrances; revamping of shrub beds; thinning out of woodland strip; community garden by the Parkgate Institute; improving drainage; increasing biodiversity around stream; revamp around boating pond.	<b>H</b>
Rosyth	Wilderness Plantation ROSY02	This is a mature woodland north of the public park. The space wood would benefit from a a surfaced path network through the woodland, removal of litter and fly tipping.	<b>M</b>
Rosyth	Orchardhead wood ROSY03	This is a mature wood which has been an area of Ministry of Defence inaccessible land. The wood can now be accessed from the business park on Viking Way. The wood could have be a good greenspace resource for the town and would benefit from more entrances in the high fencing.	<b>M</b>
Rosyth	Heath Road greenspace ROSY08	This is a grass open space. This space would benefit from changes to the school fencing to make the site more accessible, relocation of play area, additional planting of tress and shrubs would enhance this space.	<b>M</b>

## 7 Greenspace Strategy

### Strategy map

The Strategy is mapped out below :



## **Greenspace Strategy**

### **Overall Outcome**

The overall outcome of the strategy is :

#### **Increasing access to life enhancing greenspace**

Two outcomes help to deliver the overall outcome

##### **Outcome A**

Increasing quality publicly usable greenspace

##### **Outcome B**

Improve opportunities for life enhancing use

#### **Outcome A –**

##### **Increasing quality publicly usable greenspace**

This outcome is about delivering the right amount, quality and distribution of publicly usable greenspace. Three objectives add the delivery of this outcome.

###### **Objective 1–**

Increase the amount of publicly usable and accessible greenspace

###### **Objective 2 –**

Improve the quality of greenspace

###### **Objective 3 –**

Improve the biodiversity of greenspace

#### **Objective 1 –**

##### **Increase the amount of publicly usable and accessible greenspace**

Development Planning policy and management has a key role in delivering this objective. In areas with low provision other public land could help to increase greenspace.

###### **Action 1 – Produce Supplementary planning guidance**

This will be a key document for development policy and management on the protection and provision of greenspace.

The guidance will include policies on:

the protection of greenspace;

new quantity and access standards;

play Space guidance;

quality standards for greenspace in new developments;

settlement greenspace networks;

development application guidance;

developer contributions;

factoring of greenspace

The document will also provide guidance on how the development planning system can deliver actions of the greenspace strategy.

**Action 2 – Create a Quantity Standard** for Development Planning based on the audit standard

**Action 3 – Increase the quantity of greenspace in 16 settlements.**

There are 16 settlements that have low quantities of greenspace and which would benefit from being brought up to the Fife average. This is an action dependent on Development Planning and investigating whether other land can be accessed and used by the public.

**Action 4 – Achieve Queen Elizabeth II protection for greenspaces.**

Fields in Trust will legally designate protection to greenspaces as part of 2012 celebrations for the London Olympics and the Royal Diamond Jubilee. Proposed sites will be submitted to Fields in Trust before 2012.

**Action 5 – Create an Access Standard** for Development Planning based on the audit standard

**Action 6 – increase publicly usable greenspace in NHS land.**

Work with NHS Fife to increase the amount of publicly usable greenspace in hospital grounds.

**Action 7 – increase publicly usable greenspace in school land.**

Work with Fife Councils's Education Services to increase access to school grounds in settlements where the quantity is low.

**Action 8 – increase publicly usable greenspace in town centres.**

Promote the potential benefits of greenspace in town centres. Work with Development Services to increase the amount of greenspace in Glenrothes Town Centre.

## **Objective 2 – Improve the quality of greenspace**

The Area Committee Action Plans will be one of the main ways of highlighting the space that needs improving.

**Action 9 – develop and implement a quality standard**

Many greenspace are below a reasonable quality. Address this by developing and implementing a quality standard so that all publicly usable greenspace is a reasonable standard and aim for all to be of a good quality.

**Action 10 – improve the quality of 95 greenspaces and produce 7 Area Action Plans.**

There are 95 greenspaces which would benefit from improvements to their features and facilities. Seven Area Action Plans will aid delivery of improvements and monitor progress.

**Action 11 – Create a designation for parks and a hierarchy of park types.**

Create a designation for parks, so that only parks that meet certain criteria can be designated as parks. A parks hierarchy is also important in raising standards and in having a strong greenspace network. There will be three types of park.

- Major Town Park – the largest parks, with a range of quality features and facilities, destination spaces.
- Town Park, large park, with a range of features and facilities for the residents of a town or area.
- Local Parks – smaller area sized parks catering for a village or a part of a town, with some features and facilities

**Action 12 – develop 7 Major Town Parks one in each of the Area Committee Areas**

**Action 13 – Achieve Green Flag Status for 14 parks by 2020**

**Objective 3 –  
Improve the biodiversity of greenspace**

Many greenspaces in and around towns and villages are important for biodiversity, some are nationally designated nature sites others are parts of habitat networks such as woodlands. There are greenspaces which are less biodiverse, due to litter, invasive species and maintenance. An objective of the strategy is to ensure that all greenspace are good for biodiversity.

**Action 14 – increase the amount of Fife Council land actively managed for biodiversity**

The amount of land will be recorded that is actively managed and this will be reviewed annually.

**Outcome B –****Increasing life enhancing use**

Greenspaces can be life enhancing, for health and well being but also in sustaining successful places. This outcome focuses on 5 objectives that aid the delivery of this outcome.

**Objective 4 –**

Improve opportunities for the productive use of greenspace for food

**Objective 5 –**

Address health and well being inequalities through increased use of greenspace

**Objective 6 –**

Improve opportunities for community involvement and management

**Objective 7 –**

Improve opportunities for the cultural and educational use

**Objective 4 –****Improve opportunities for productive use of greenspace for food growing**

Publicly usable greenspace has the potential to be productive space for growing food. There are a whole range of benefits in growing fruit and vegetables on public land.

**Action 15 – Increase the amount of greenspace used for allotments and community gardens and public orchards, used for growing fruit and vegetables.**

Work with projects such as Growing for Life in Fife' project to deliver opportunities to create new community gardens, and the Fife Coast and Countryside Trust in creating new public orchards

**Objective 5 –****Address health and well being inequalities through increased use of greenspace**

Although the relationship between health and greenspace is complex, there is growing evidence that the relationship is positive i.e that greenspace improves health and wellbeing.

The quality and quantity of greenspace is important and poor quality greenspace may even have a negative health impact. Experiencing greenspace also has a positive impact on levels of stress. This can be achieved through outdoor activity and

exercise, natural daylight, and the aesthetic experience, hence the importance of the quality of the greenspace.

The promotion of physical activity and greenspace is also important and includes a number of factors which influence it including distance to greenspace, accessibility, size of greenspace and connectivity to residential and commercial areas, and multi functional greenspace.

**Action 16 – widely advocate the benefits of greenspace for health and wellbeing** –promote the benefits of greenspace and the positive impacts on health and wellbeing including positive mental health

**Action 17 – promote the use of greenspace for physical activity use including walking and cycling** - Work with partners on integrating greenspace with active travel / walking / cycling networks

**Action 18 - Engage with children & young people** on the use and views of greenspace and support children & young people to participate in the development and management of greenspace in their local areas.

**Action 19 - develop a hierarchy of play areas and play spaces.** Assess and develop a hierarchy of play areas in the settlements including neighbourhood play space, local, town and hubs.

**Action 20 – engage with key user groups within areas of deprivation and prioritise** on the use of local greenspaces and support groups to participate in the development and management.

## **Objective 6 – Increase the involvement of communities in improving and managing greenspace**

There are many community groups and individuals interested and taking action to improve greenspace in their area. Technical and financial support is needed, groups have the potential to improve and manage spaces which in turn helps community cohesion.

**Action 21 – encourage and support communities** and constituted groups to increase access to quality greenspace whether this is by providing financial or technical support.

## **Objective 7 –**

### **Increase the cultural and educational use**

Increasing the cultural and educational use of greenspace can have many benefits in terms of increasing life enhancing use and also economic benefits.

#### **Action 22 – increase the use of greenspaces for events.**

Work with partners to increase the use of greenspaces for events.

#### **Action 23 - increase the educational use of greenspace**

Work with partners on ways to increase educational use whether through educational visits, the curriculum or through eco schools.

## **6 Delivery**

### **6.1 Greenspace task group**

The greenspace task group is a task group of the Fife Environment Partnership which is the strategic partnership responsible for delivering the 'sustaining and improving our environment' theme in Fife's Community Plan.

The partnership has recently underwent a review and under the new structure there is now a Greenspace Task Group. This group will be the group responsible for the delivery of the Greenspace Strategy.

### **6.2 Area action plans**

Area Action Plans covering the seven areas will be one of the main ways to deliver settlement and site specific action outlined in section 6 of this strategy.

### **6.3 Single outcome agreement indicator**

"Increasing access to quality greenspace" has been proposed as an indicator in Fife's single outcome agreement.

## 7 Greenspace Strategy Action plan

Priority	Action	Lead
<b>Objective 1</b>	<b>Increase the amount of publicly usable and accessible greenspace</b>	
Action 1	Produce Supplementary planning guidance	L&C
Action 2	Create a Quantity standard	L&C
Action 3	Increase the quantity of greenspace in 16 settlements.	L&C
Action 4	Achieve Queen Elizabeth II protection for greenspaces.	L&C
Action 5	Create an Access standard	L&C
Action 6	Increase publicly usable greenspace in NHS land	NHS
Action 7	Increase greenspace in school grounds	L&C
Action 8	Increase publicly usable greenspace in town centres	DS
<b>Objective 2</b>	<b>Improve the quality of greenspace</b>	
Action 9	develop and implement a quality standard	L&C
Action 10	Improve the quality of 95 greenspaces and produce 7 Area Action Plans.	L&C
Action 11	Create a designation for parks and a hierarchy of park types.	L&C
Action 12	Develop 7 Major Town Parks one in each of the Area Committees	L&C
Action 13	Achieve Green Flag status for 14 parks by 2020	L&C
<b>Objective 3</b>	<b>Improve the biodiversity of greenspace</b>	
Action 14	Increase the amount the of Fife Council land actively managed for biodiversity	FCCT
<b>Objective 4</b>	<b>Increase productive use for food growing</b>	
Action 15	Increase the amount of greenspace used for allotments, community gardens, public orchards used for fruit and vegetable growing	L&C

<b>Objective 5</b>	<b>Address health and well being inequalities through increased use of greenspace.</b>	
Action 16	Widely advocate the benefits of greenspace for health and wellbeing	L&C
Action 17	Promote the use of greenspace for physical activity use including walking and cycling	L&C
Action 18	Engage with children & young people on the use and views of greenspace and support children & young people to participate in the development and management of greenspace in their local areas.	L&C
Action 19	Develop a hierarchy of play areas and play spaces.	L&C
Action 20	Engage with key user groups within areas of deprivation and prioritise on the use of local greenspaces and support groups to participate in the development and management.	L&C
<b>Objective 6</b>	<b>Increase community use</b>	
Action 21	Encourage and support communities and constituted groups to increase access to quality greenspace whether this is by providing financial or technical support.	L&C
<b>Objective 7</b>	<b>Increase cultural use</b>	
Action 22	Increase the use of greenspaces for events	L&C
Action 23	Increase the educational use of greenspace	L&C

### Abbreviations

L&C – Leisure & Cultural Services, Fife Council  
 EYSG – Early Years Strategy Group, Fife Council  
 FCCT – Fife Coast & Countryside Trust  
 NHS – National Health Service Fife

