

City of Dunfermline Area Surveys' Analysis 2022

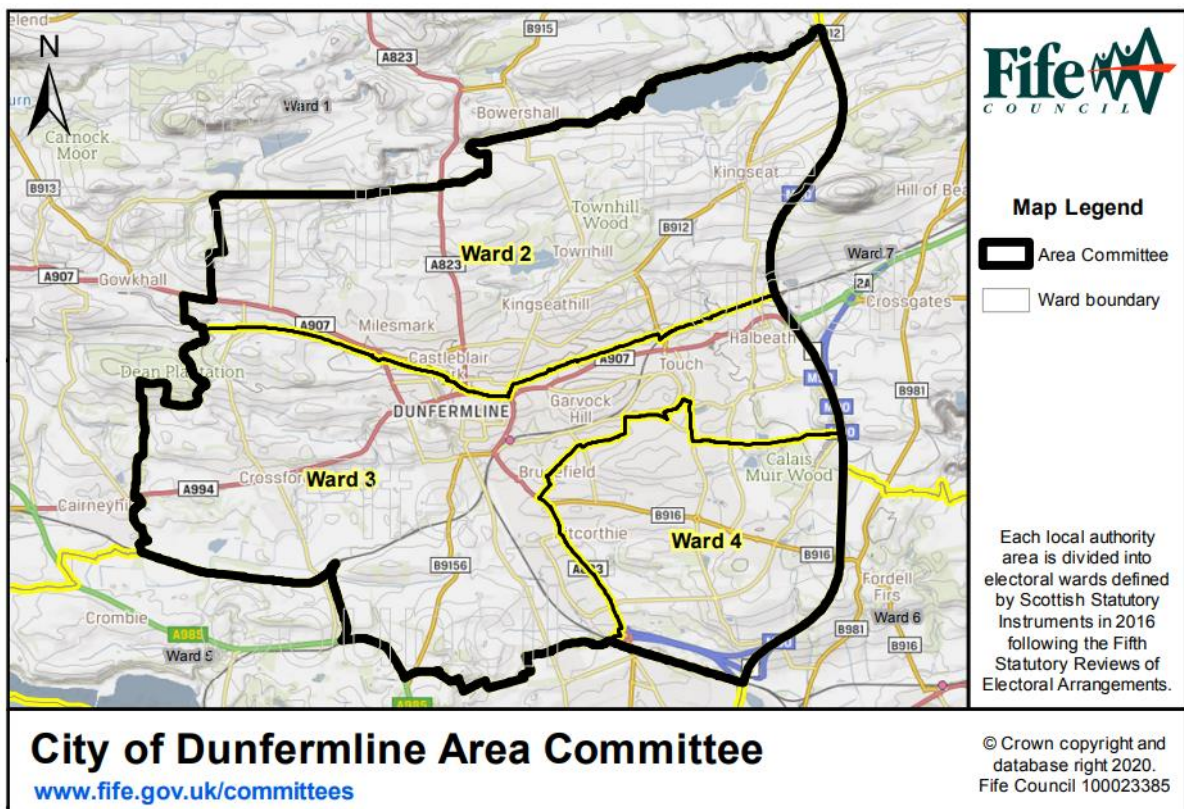
Please click on the survey analysis you are interested in below:

- [Have Your say on the future of Fife's places analysis](#)
- [Disabled persons and place survey analysis](#)
- [Businesses & organisations survey analysis](#)

If you'd like to comment on this analysis email Fife Council at Fife.Devplan@Fife.gov.uk by **midnight 29th November 2023** or write to:

Policy & Place Team
Planning Service
Fife Council
Fife House West
North Street
Glenrothes
KY75LT

We would appreciate it if you would provide the name of the survey and town/village/location on which you are commenting on in your response, thank you.

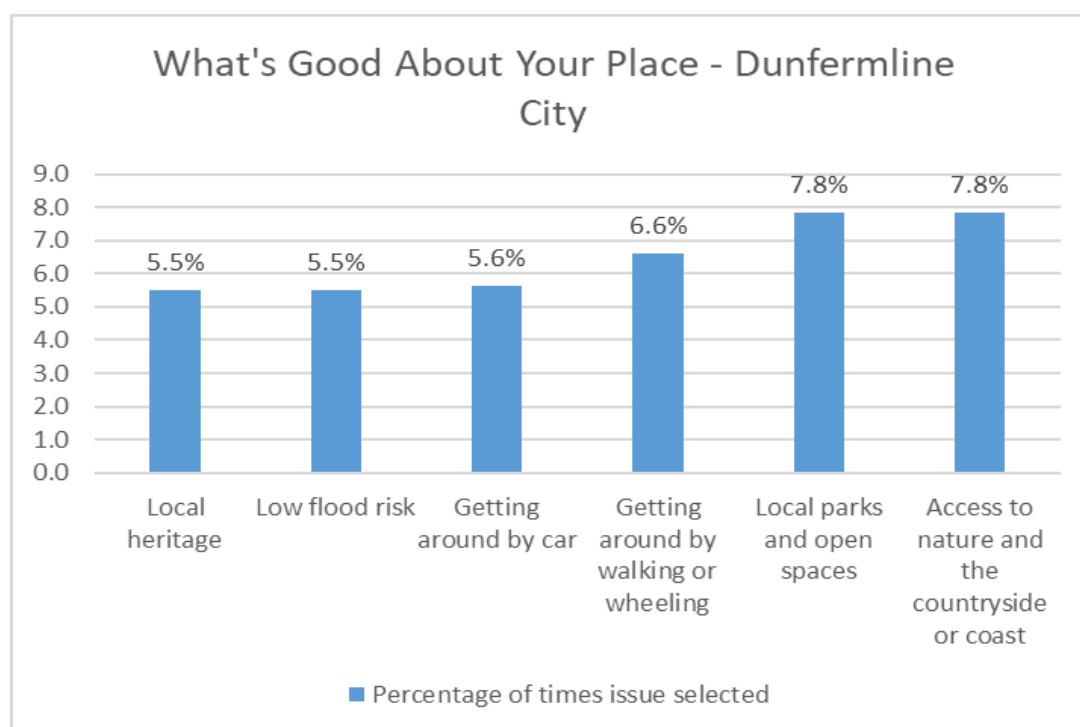


Have your say on the future of Fife's places survey analysis - City of Dunfermline

In late 2022 we asked you what you thought was good and bad about where you live and the challenges these places face due to things such as the climate emergency and food resilience. The online survey provided an opportunity for people to have their say in helping shape where they live by highlighting the issues that they think need to be tackled by the next Local Development Plan for Fife.

1.0 What's Good About Your Area

Figure 1 - What do you think is good about where you live?

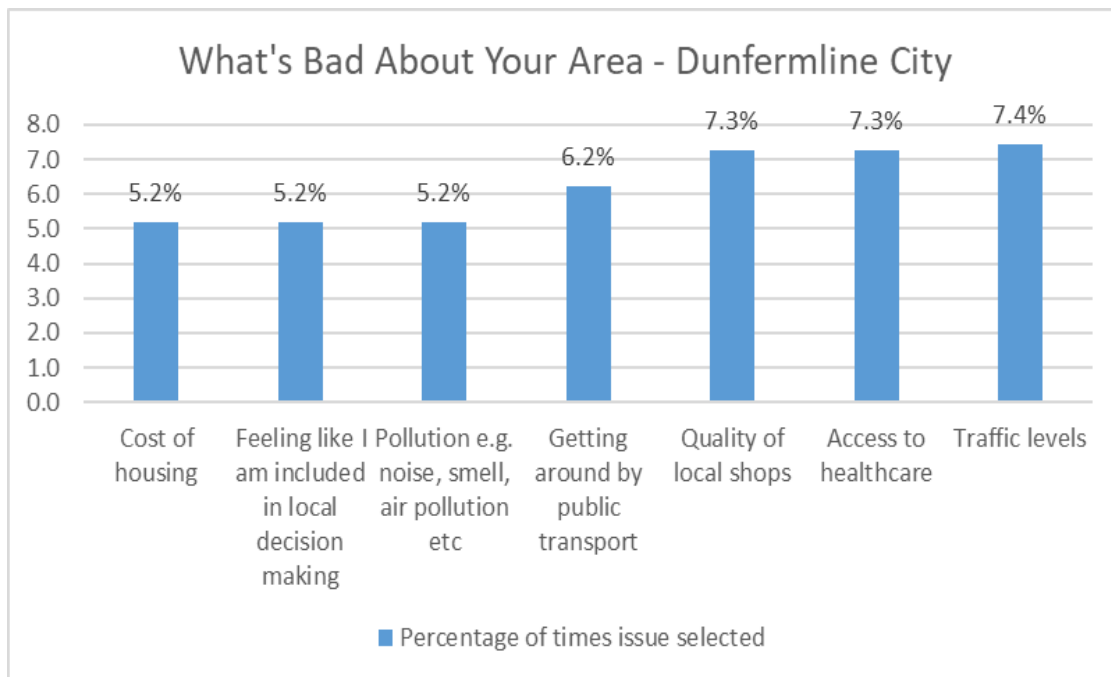


Green and Blue infrastructure is seen as the best feature with 'Access to Nature and the Countryside or Coast' and 'Local parks and open spaces' seen as the two best aspects of the Dunfermline Area. Movement around the Dunfermline Area were viewed positive with both 'getting around by walking or wheeling' and 'getting around by car' considered good aspects with 6.6% and 5.6% respectively.

Respondents mentioned that walking routes often go through parks and fields where they enjoy going. Some people highlighted that it's easy to drive to surrounding areas from and within Dunfermline.

2.0 What's Bad about Your Area

Figure 2 – What’s bad about your area?



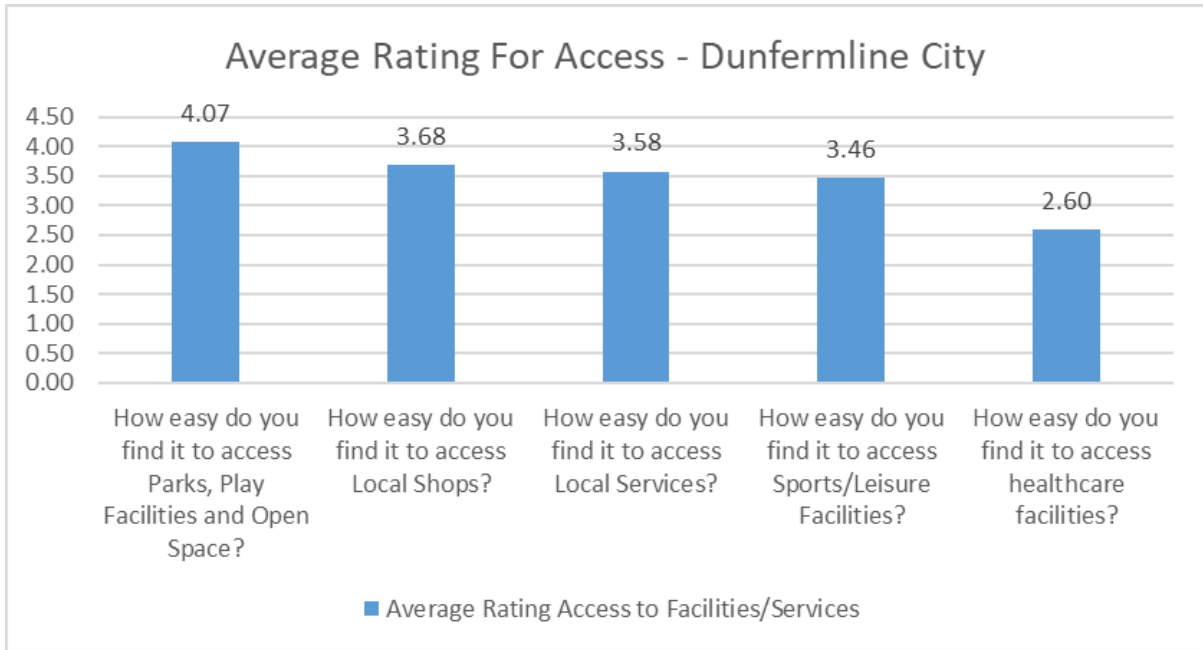
‘Traffic levels’ (7.4%), ‘Access to Healthcare’ (7.3%) and ‘Quality of Local Shops’ (7.3%) were seen as the top 3 issues in the area. ‘Pollution’ (5.2%) and ‘Cost of housing’ (5.2%) were also seen as bad aspects of the City of Dunfermline Area.

Feedback centred around the lack of quality local shops and that the shop that they go to were only supermarkets. The quality of local roads was also referenced by respondents, while public transport links were seen as poor as they don’t link up with other public transport modes such as rail.

3.0 Access

We asked you how easy it is for you to access local services and facilities in your area based on how easy it is to travel to the facility or service taking into account things like opening times, ease of getting appointments etc

Figure 3 - Access

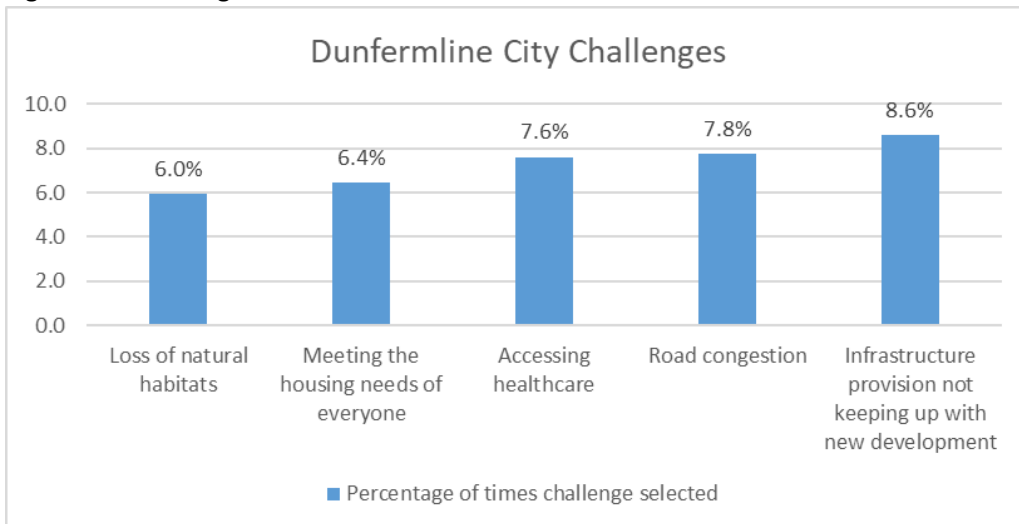


Access to 'Parks, Play Facilities and Open Space', is seen by respondents as easy to access with an average rating of 4.07. Respondents mentioned that parks and open spaces are nearby their houses but do go on to say that some existing park equipment could do with being refurbished or replaced.

Healthcare facilities are seen as being difficult to access with an average rating of 2.6. Some respondents stated that accessing healthcare via car was good but awful on public transport. Access to the facilities is alright, but obtaining an appointment is the main challenge.

4.0 Challenges – Dunfermline

Figure 4 – Challenges within Dunfermline



Respondents within the Dunfermline City Area identified 'Infrastructure provision not keeping up

with new development' as Dunfermline's biggest challenge (8.6%). Road Congestion was also seen as a challenge (7.8%) along with the loss of natural habitats with 6%.

Respondents raised concerns about the growing housing developments that result in the loss of green and open space. They also mentioned congestion with more care on the road from the housing developments being required.

Some respondents think that the housing developments should be more focused around 20 minute neighbourhoods and less car focused to help combat congestion.

Fife Local Development Plan - Disabled Persons and Place Online Survey (2022) Analysis – City of Dunfermline Area

The survey was carried out late 2022 and aimed at finding out about the issues facing disabled persons in relation to where they live and the places they visit. We wanted to know how people find access to things like local shops, sports/leisure facilities, parks etc and what they think can be done to make these places more accessible for everyone. We also wanted to hear about the challenges facing where people live which could be things like the climate emergency or future access to public transport.

1.0 Where you live

Q1 Where do you enjoy going when out and about?

The majority of places people tend to go to are leisure pursuits like visiting parks, the cinema, bowling and visiting cafes as well as nature and the countryside.

Q2 Are there places you would like to go but haven't been able to due to access issues?

There were no specific places mentioned other than ten pin bowling, however it was highlighted that some parts of the path network are not suitable for scooters or wheelchair users.

Bus services in some cases are considered limited which restricts access to Dunfermline town centre by public transport.

Q3 How easy do you find it to get around where you live by walking and/or wheeling?

It was a mixed response to this question with some finding it relatively easy and others more difficult. Reasons given for this includes the topography of Dunfermline itself and poor bus services which limits the amount of walking and wheeling some people can do.

Q4 What improvements could be made to improve walking and/or wheeling routes in your area?

Improvements suggested, include better maintenance of the path network and enhancements where necessary as well as better general upkeep of surrounding bushes and grass etc.

Better path connectivity between Crossford and Dunfermline was highlighted as a possible improvement.

Q5 How easy do you find it to access local shops and services? For example, grocers, hairdressers, council offices, libraries, restaurants etc.

There was a range of views on access to local shops and services with some finding it impossible without a car and even then, a lack of suitably located disabled car parking provision is seen to be an issue.

Others stated that they found it easy to get around and that a lot of places are designed to be disabled friendly.

Q6 What improvements could be made to improve access to local shops and services?

Getting to the shops and services was highlighted as problematic.

Access to Council offices was seen to be an issue and it was suggested that they are moved to a more accessible location.

Some libraries are considered to lack disabled parking, it can be too far away.

Q7 How easy do you find it to access parks, green space and countryside?

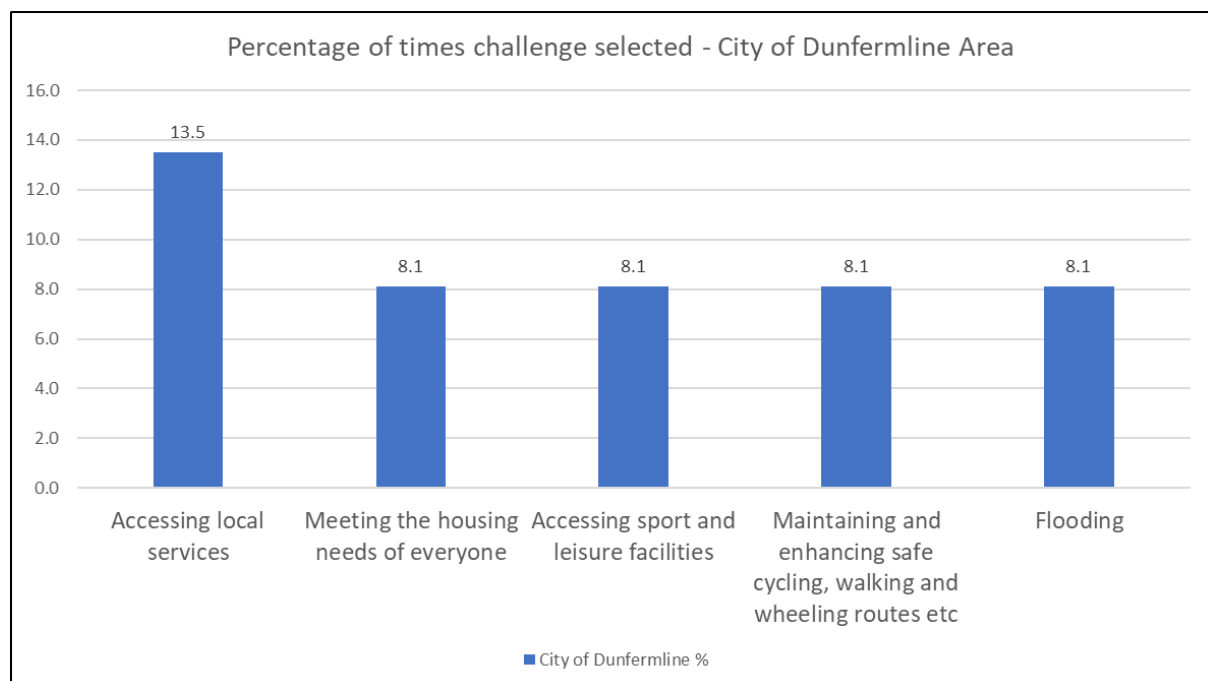
The majority of respondents felt that accessing parks, green space and the countryside to be relatively easy. Poor public transport to these things making it difficult for those without cars to access.

Q8 What improvements could be made to improve access to parks, green space and countryside?

Better public transport and maintenance and enhancement of the path network were seen as potential improvements.

2.0 Challenges

What do you consider to be the biggest challenges facing where you live?



The challenge chosen the most was 'Accessing local services' which includes things such as libraries and council offices.

'Meeting the housing needs of everyone', 'Accessing sports and leisure facilities', Maintaining and enhancing safe cycling, walking and wheeling routes' and 'flooding' were all seen to be important issues facing the area.

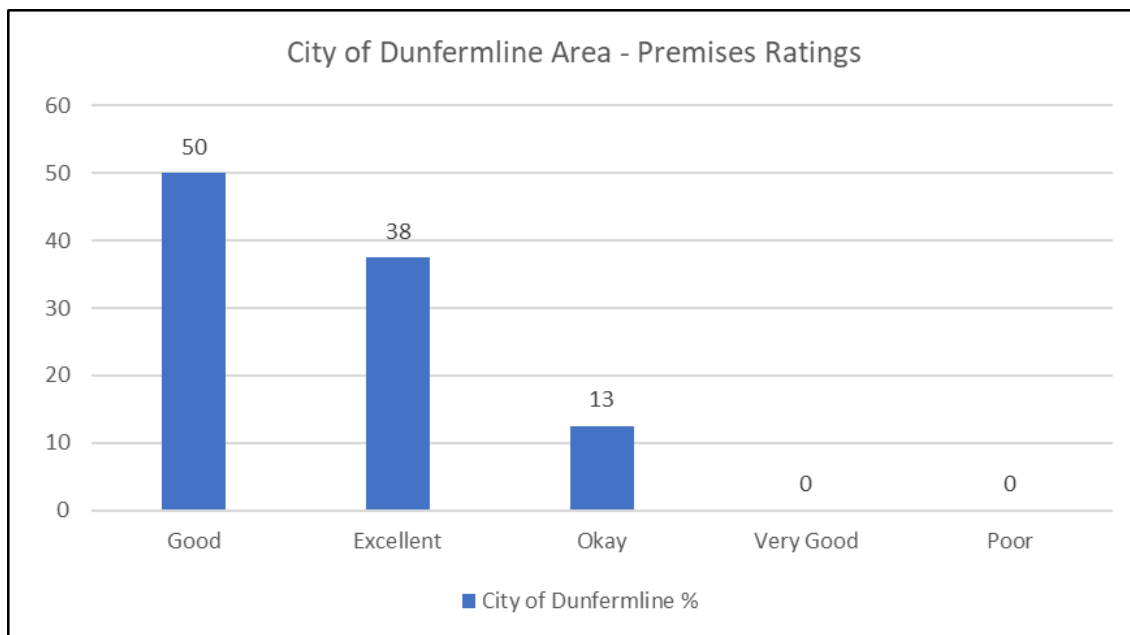
Please comment further on what you consider to be the biggest challenges facing where you live.

N/A

Fife Local Development Plan - Businesses and Organisations Survey Analysis - City of Dunfermline Area

This consultation was carried out late 2022 and gathered views on important issues like the local economy, modern business properties, availability of employment land to develop and renewable energy. We also asked for views on key future challenges for Fife.

1.0 How would you rate your premises?



Respondents rated their premises as okay, good or excellent indicating that there is a range of premises in terms of age, size, cost and quality.

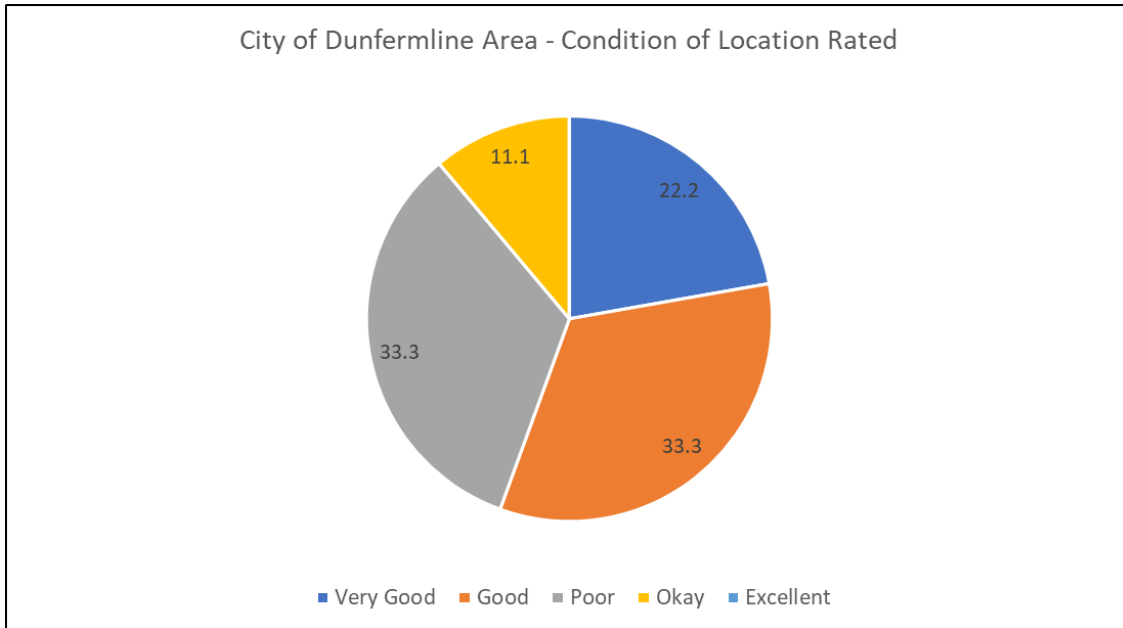
2.0 Please tell us what is good and/or bad about your premises.

Access to the M90 and good parking were seen as a positive for some respondents stating that there are no negatives.

A couple of responses indicated that the businesses are now at capacity and are struggling to expand.

The issue of some buildings being old and difficult to heat as well as costly to upgrade.

3.0 How would you describe the condition of the Industrial Estate/Business Park/town centre/other location your business/organisation is based?



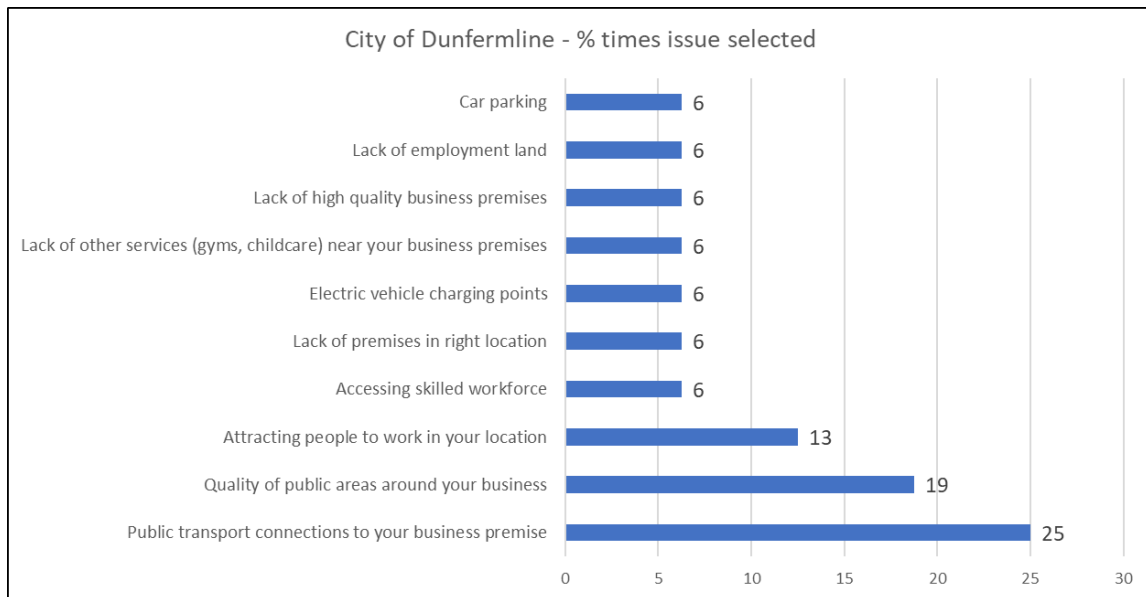
While the majority of respondent rated the condition around their premises as okay, good or very good a significant proportion felt that the surrounding areas in some places were poor (33.3%) .

4.0 Please tell us what is good and/or bad about the Industrial Estate/Business Park/town centre/other location your business/organisation is based.

Pitreavie Business Park was specifically mentioned as having no dilapidation or boarded up units.

One respondent stated that they would not have a business near Dunfermline town centre as it is dirty, the pavements are terrible and the whole area is not disability friendly at all. Seagulls also an issue along as well as a lack of good shops to attract people.

5.0 What issues do you want the next Local Development Plan to look at?



6.0 Please tell us about any other issues not listed above that you want the next Local Development Plan to look at.

Land allocations to meet housing shortfall.

More certainty about development opportunity locations for bakery shops /drive throughs on or adjacent to industrial and business parks, transport hubs or growing places where there is demand for our products.

There is a need for a more diverse mix of shops.

Anti social behaviour was also highlighted as issue to look at.